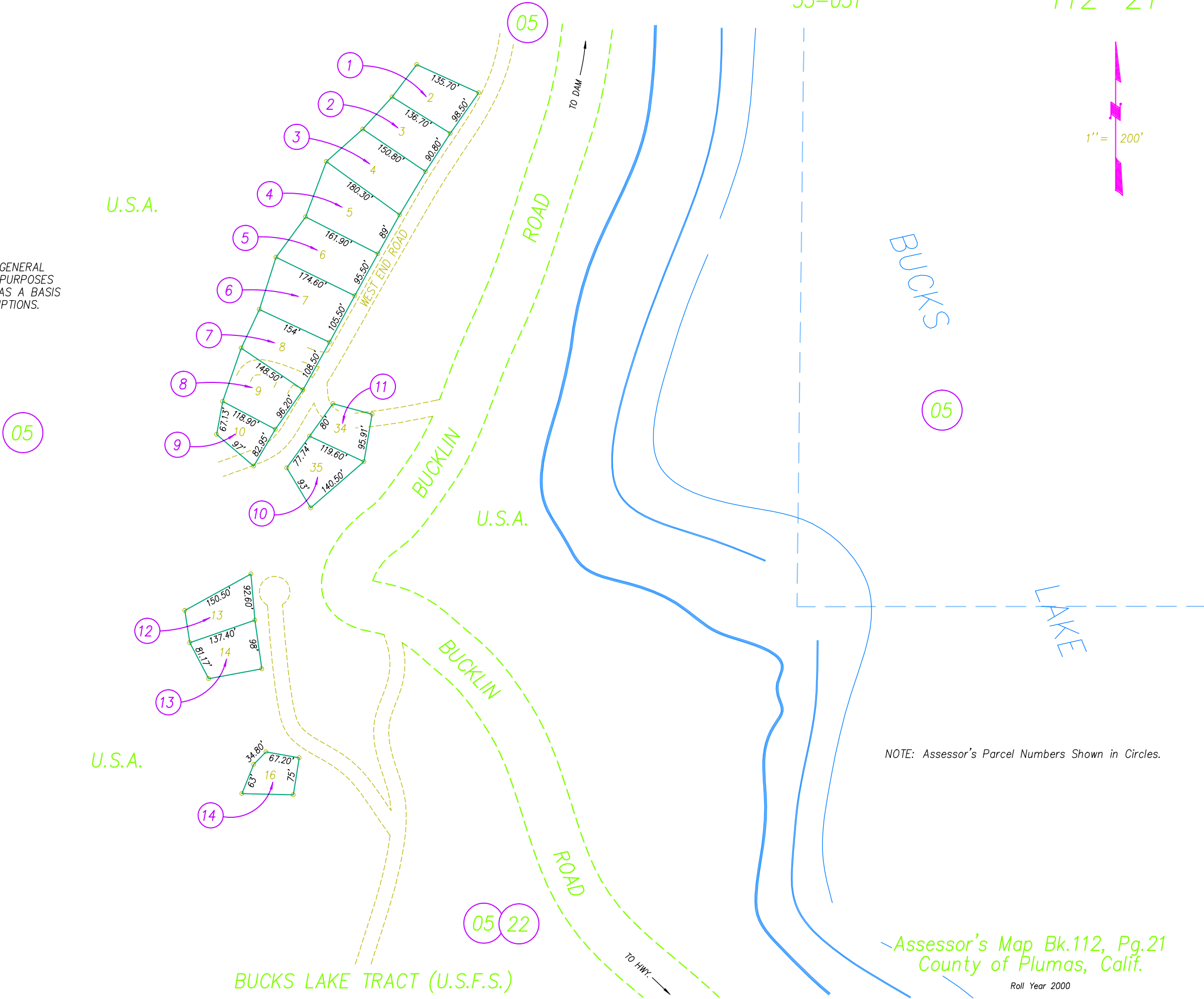
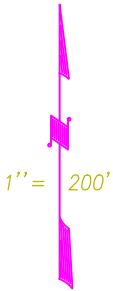


POR. SEC. 33 T. 24 N., R. 7 E., M.D.B.&M.

Tax Rate Area
53-031

112-21

ASSESSOR'S PLATS ARE FOR GENERAL
PROPERTY LOCATION AND TAX PURPOSES
ONLY. THEY MAY NOT BE USED AS A BASIS
FOR LEGAL PROPERTY DESCRIPTIONS.



DRAWN BY GREG WITHROW
3/23/2000

Assessor's Map Bk.112, Pg.21
County of Plumas, Calif.

Roll Year 2000