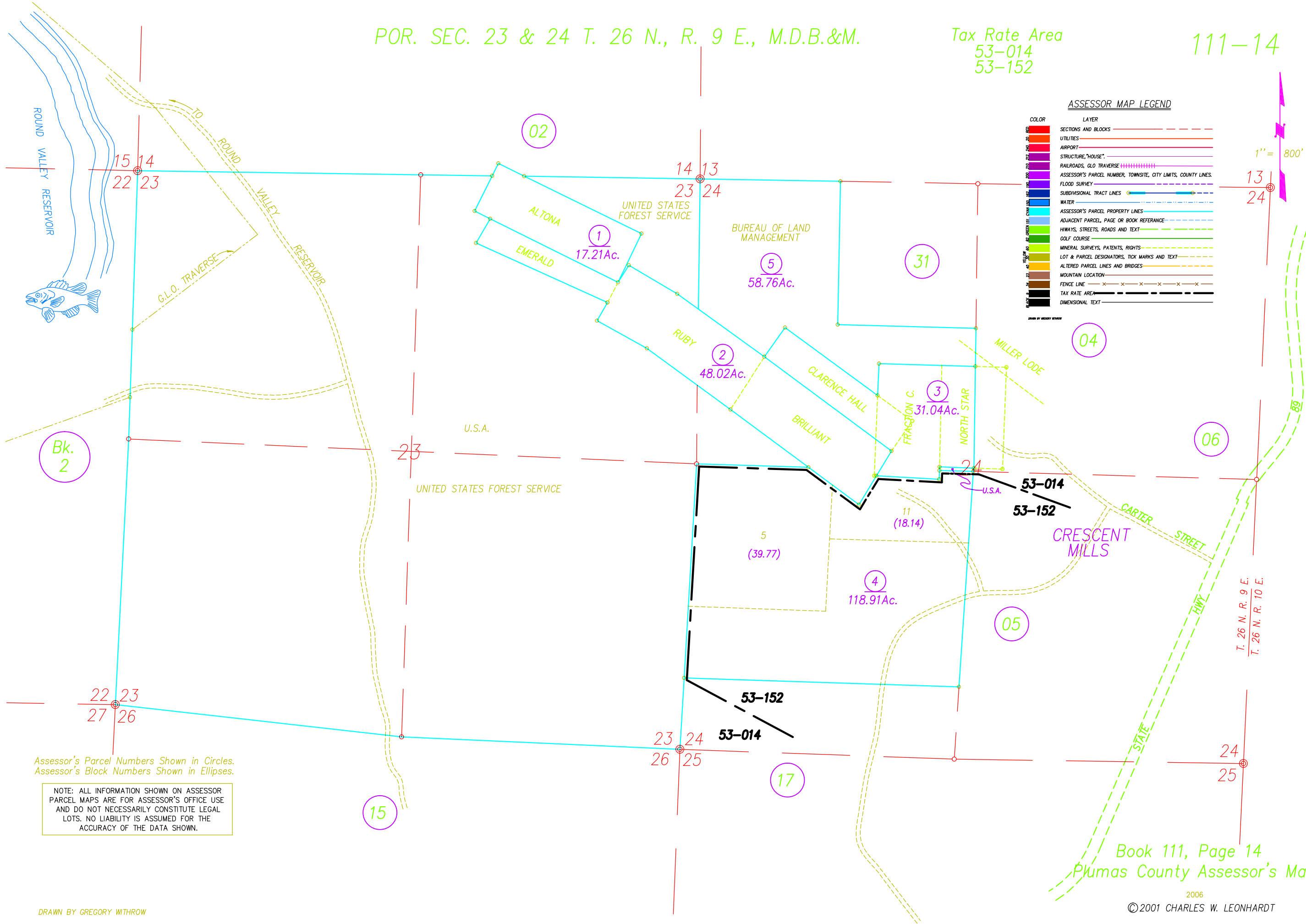


POR. SEC. 23 & 24 T. 26 N., R. 9 E., M.D.B.&M.

Tax Rate Area
53-014
53-152

111-14



Assessor's Parcel Numbers Shown in Circles.
Assessor's Block Numbers Shown in Ellipses.

NOTE: ALL INFORMATION SHOWN ON ASSESSOR
PARCEL MAPS ARE FOR ASSESSOR'S OFFICE USE
AND DO NOT NECESSARILY CONSTITUTE LEGAL
LOTS. NO LIABILITY IS ASSUMED FOR THE
ACCURACY OF THE DATA SHOWN.

DRAWN BY GREGORY WITHROW

Book 111, Page 14
Plumas County Assessor's Map

2006
©2001 CHARLES W. LEONHARDT