

NOTE: ALL INFORMATION SHOWN ON ASSESSOR
PARCEL MAPS ARE FOR ASSESSOR'S OFFICE USE
AND DO NOT NECESSARILY CONSTITUTE LEGAL
LOTS. NO LIABILITY IS ASSUMED FOR THE
ACCURACY OF THE DATA SHOWN.

POR. SEC. 3, T. 26 N., R. 9 E., M.D.B.&M.

Tax Rate Area
53-077
53-135

110-32

1" = 200'

ASSESSOR MAP LEGEND

COLOR	LAYER
SECTION 30	SECTIONS AND BLOCKS
SECTION 20	UTILITIES
SECTION 140	AIRPORT
SECTION 122	STRUCTURE, "HOUSE"
SECTION 210, 212	RAILROADS, GLO TRAVERSE
SECTION 190, 200	ASSESSOR'S PARCEL NUMBER, TOWNSITE, CITY LIMITS, COUNTY LINES.
SECTION 180	FLOOD SURVEY
SECTION 162	SUBDIVISIONAL TRACT LINES
SECTION 140, 142	WATER
SECTION 120	ASSESSOR'S PARCEL PROPERTY LINES
SECTION 105	ADJACENT PARCEL, PAGE OR BOOK REFERENCE
SECTION 100	HIWAYS, STREETS, ROADS AND TEXT
SECTION 80	GOLF COURSE
SECTION 60	MINERAL SURVEYS, PATENTS, RIGHTS
SECTION 40	LOT & PARCEL DESIGNATORS, TICK MARKS AND TEXT
SECTION 20	ALTERED PARCEL LINES AND BRIDGES
SECTION 10	MOUNTAIN LOCATION
SECTION 0	FENCE LINE
SECTION 0	TAX RATE AREA
SECTION 0	DIMENSIONAL TEXT

DRAWN BY GREGORY WITHROW



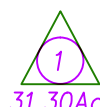
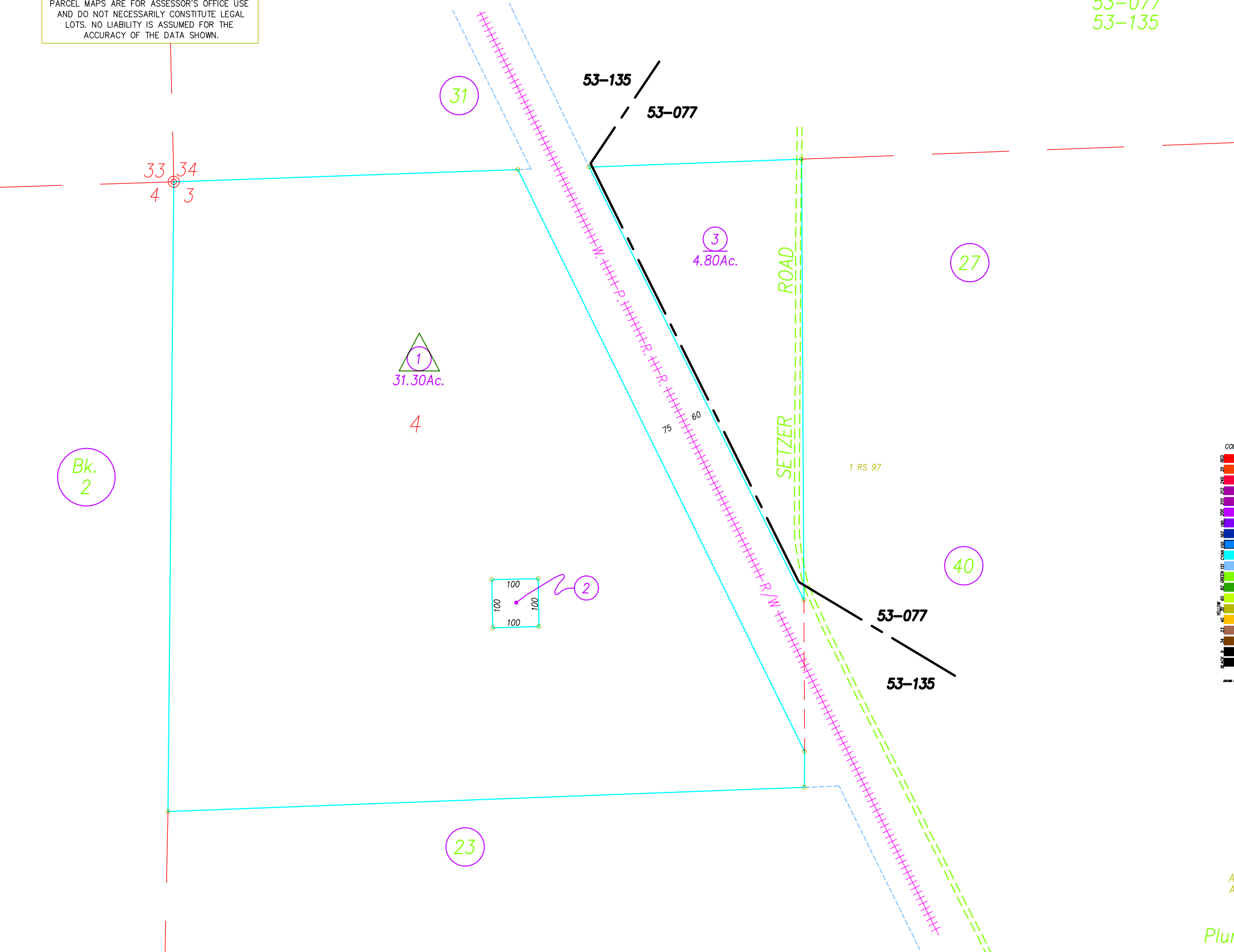
Assessor's Parcel Numbers Shown in Circles.
Assessor's Block Numbers Shown in Ellipses.

Book 110, Page 32
Plumas County Assessor's Map

2006

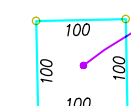
© 2001 CHARLES W. LEONHARDT

DRAWN BY GREGORY WITHROW



31.30Ac.

4



2

23

3
4.80Ac.

27

40

53-135

53-077

SETZER ROAD

1 RS 97

53-077

53-135

33 34
4 3

Bk.
2