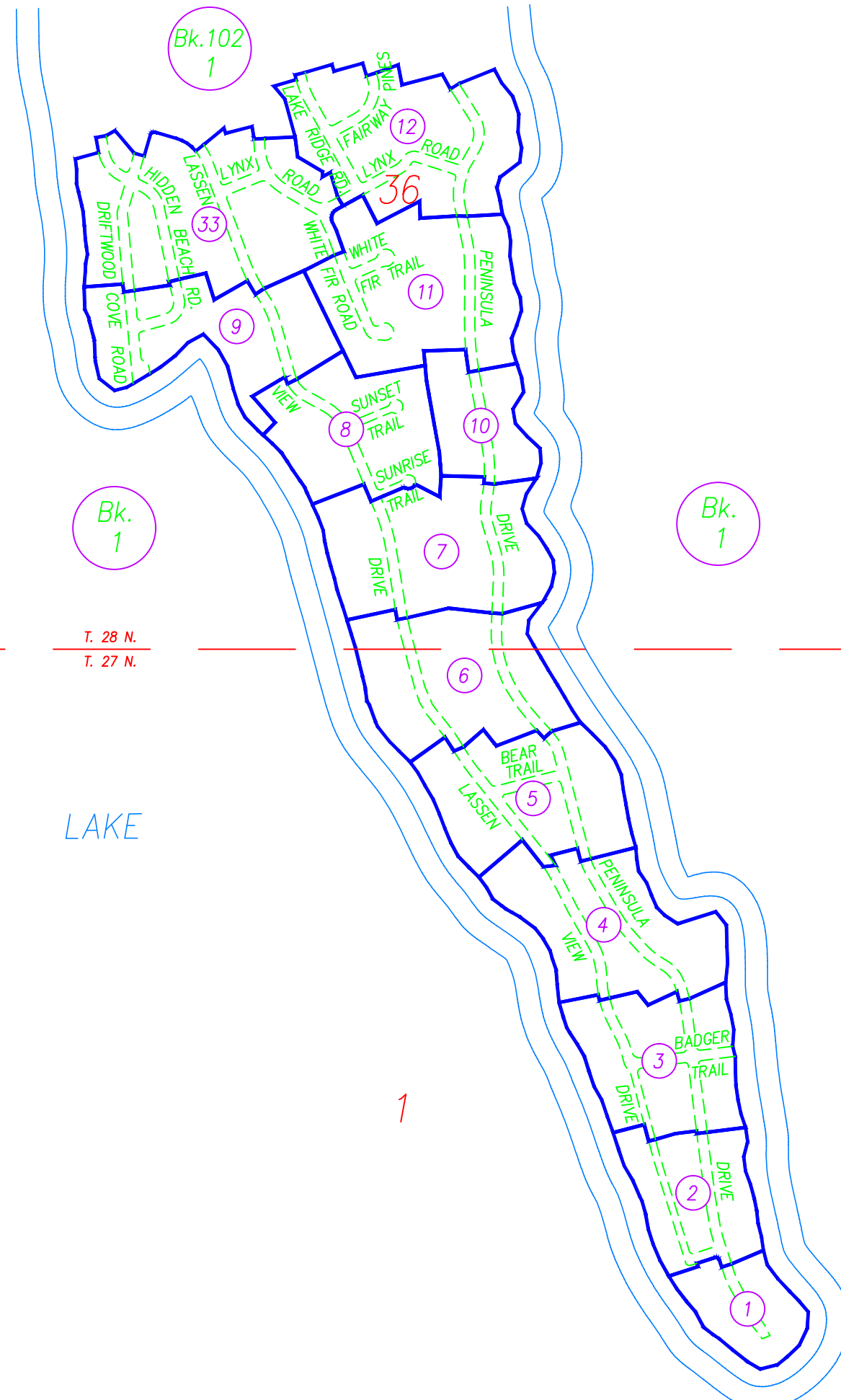


T. 27 & 28 N., R. 7 E., M.D.B.&M.



NOTE: ALL INFORMATION SHOWN ON ASSESSOR
PARCEL MAPS ARE FOR ASSESSOR'S OFFICE USE
AND DO NOT NECESSARILY CONSTITUTE LEGAL
LOTS. NO LIABILITY IS ASSUMED FOR THE
ACCURACY OF THE DATA SHOWN.

REDRAWN BY CORY BROMBY
12/31/15

INDEX
Book 102, Page 2
Plumas County Assessor's Map
2015