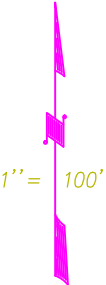


POR. SEC. 10 T. 23 N., R. 13 E., M.D.B.&M.

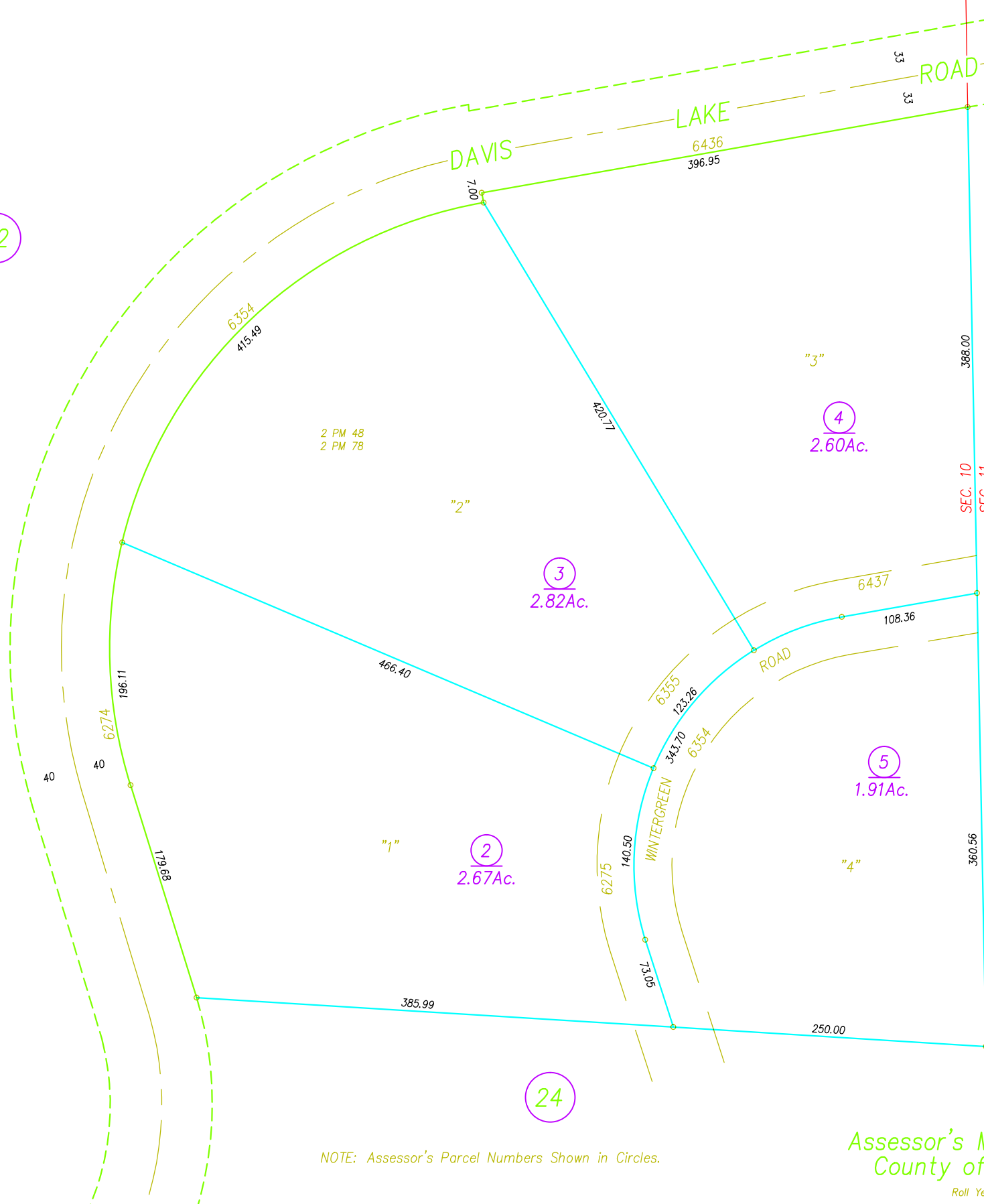
Tax Rate Area  
53-160

25-33

ASSESSOR'S PLATS ARE FOR GENERAL  
PROPERTY LOCATION AND TAX PURPOSES  
ONLY. THEY MAY NOT BE USED AS A BASIS  
FOR LEGAL PROPERTY DESCRIPTIONS.



02



24

24

NOTE: Assessor's Parcel Numbers Shown in Circles.

Assessor's Map Bk.25, Pg.33  
County of Plumas, Calif.

Roll Year 2000