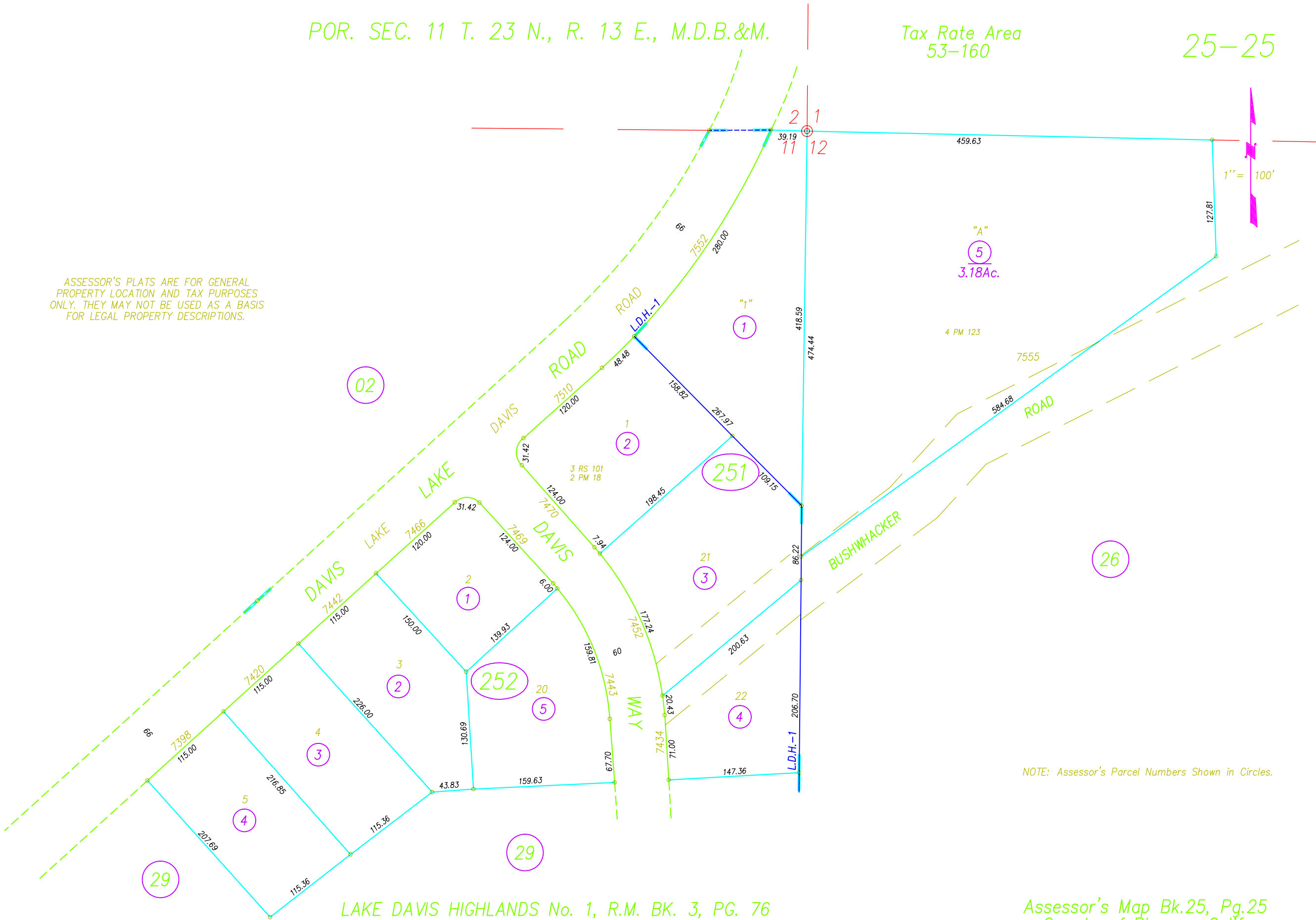


POR. SEC. 11 T. 23 N., R. 13 E., M.D.B.&M.

Tax Rate Area
53-160

25-25

ASSESSOR'S PLATS ARE FOR GENERAL
PROPERTY LOCATION AND TAX PURPOSES
ONLY. THEY MAY NOT BE USED AS A BASIS
FOR LEGAL PROPERTY DESCRIPTIONS.



DRAWN BY GREG WITHROW
5/15/2000

LAKE DAVIS HIGHLANDS No. 1, R.M. BK. 3, PG. 76

Assessor's Map Bk.25, Pg.25
County of Plumas, Calif.

Roll Year 2000