

BOUNDARY SOLUTION NARRATIVE:

CONTAINED WITHIN THE SURVEY OF S&O #33, THE COUNTY SURVEYOR MAKES THE FOLLOWING STATEMENT "AND BEING THE SWAMP AND OVERFLOWED LAND WITHIN HIS ENCLOSURE AND NOW IN HIS POSSESSION " SIGNED AND SWORN ON NOVEMBER 18TH, 1871 (BY ARTHUR W. KEDDIE, COUNTY SURVEYOR). TO ME, THIS STATEMENT GIVES THE FENCES GREAT WEIGHT ON THE SCALE OF EVIDENCE. AN ANALYSIS OF S&O #33 AND THE ADJOINING S&O SURVEYS (#34, #35, #38, #76, AND #79) WAS MADE. THE METES OF THESE SURVEYS WERE CALCULATED AND JOINED ALONG THEIR COMMON BOUNDARY LINES INTO A SINGLE FIGURE. THIS FIGURE WAS THEN COMPARED TO A RECENT AERIAL IMAGE OF FENCES IN THIS PORTION OF INDIAN VALLEY. THIS COMPARISON REINFORCES THE SIGNIFICANCE OF MANY OF THE FENCE LINES WITHIN THIS PORTION OF THE VALLEY. AS SUCH, A SIGNIFICANT PORTION OF THE BOUNDARY SOLUTION FOR S&O #33 WAS BASED UPON THE EXISTING FENCE LINES. FOLLOWING IS AN ITEM BY ITEM DESCRIPTION OF THE OVERALL PARCEL BOUNDARY SOLUTION:

- THE COMMON BOUNDARY BETWEEN S&O #33 AND GOV'T LOT 1, SECTION 5, HELD FOUND CORNER #5 AND EAST-WEST FENCE LINE THEREFROM, AS SHOWN ON (R4).
- THE COMMON BOUNDARY BETWEEN S&O #33 AND THE WEST SIDE OF GOV'T LOT 2, SECTION 5, HELD THE FOUND NORTH QUARTER CORNER OF SECTION 5 (CORNER #3) AND THE LINE PRODUCED SOUTHERLY THROUGH CORNER #9, AS SHOWN ON (R6).
- THE WEST LINE OF ROGERS NEAR NORTH VALLEY ROAD (COUNTY ROAD 112), HELD THE FOUND CORNER #12 AND THE MEAN BEARING FROM CORNER #2 TO CORNER #12 TO ESTABLISH CORNER #13, PER (R7).
- THE COMMON BOUNDARY BETWEEN S&O #33 AND S&O #38 (AND S&O #32), HELD THE EXISTING FENCE LINE.
- THE COMMON BOUNDARY BETWEEN S&O #33 AND S&O #34, HELD THE EXISTING FENCE LINES (AND PROJECTED INTERSECTION OF FENCE LINES) TO ESTABLISH CORNER #17 (SEE DETAIL "B"), AND CORNER #18.
- THE COMMON BOUNDARY BETWEEN S&O #33 AND S&O #35 (AND S&O #79), HELD RECORD BEARING (ROTATED 0°33'33") AND DISTANCE PER S&O #33 FROM CORNER #18 (THIS IS THE AREA OF THE FORMER WOLF CREEK CHANNEL) TO ESTABLISH CORNER #19. NOTE, THE FENCE ALONG THIS LEG OF THE BOUNDARY WAS NOT HELD, THIS FENCE APPEARS TO BE A FENCE OF CONVENIENCE PLACED DUE TO WOLF CREEK RE-CHANNELING (DURING THE 1960'S).
- THE BOUNDARY BETWEEN S&O #33 AND S&O #76, HELD RECORD BEARING (ROTATED 0°33'33") PER S&O #33 FROM CORNER #19 TO INTERSECT SOUTHERLY PROJECTION OF THE WEST FENCE TO ESTABLISH CORNER #20.

Line Table For Detail 'A'

Line #	Bearing and Distance	Bearing and Distance
L56	N01° 41' 10"W 469.28' (M)	SOUTH 469.91' (R3)(R7)
L57	N01° 37' 27"W 23.53' (M)	NORTH 23.50' (R7)
L58	N02° 01' 22"W 81.96' (M)	NORTH 81.76' (R7)
L59	N01° 43' 54"W 84.70' (M)	SOUTH 84.70' (R3)
L60	N02° 01' 22"W 18.82' (C)	NORTH 18.78' (R7)
L61	N70° 31' 49"E 350.26' (C)	N72° 16'E 350.49' (R7)
L62	N61° 45' 09"E 679.12' (C)	N63° 29' 20"E 679.13' (R7)
L63	N68° 51' 19"E 108.69' (C)	N71° 35' 30"E 108.75' (R7) *1
L64	N16° 50' 21"W 298.23' (C)	N15° 05' W 298.20' (R6) *2
L65	S69° 59' 39"W 209.96' (C)	S71° 45' W 209.96' (R6)

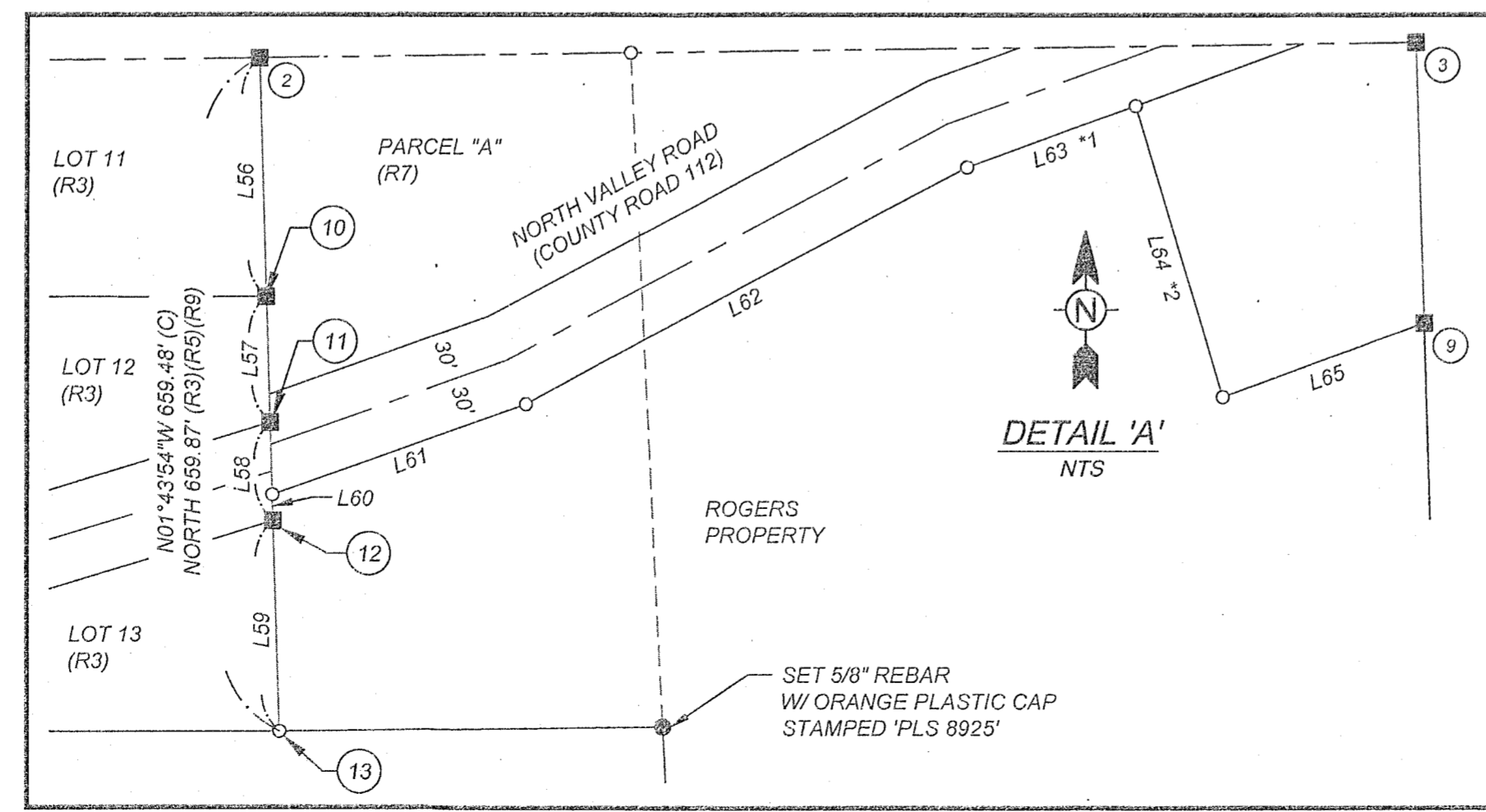
Line #	Bearing and Distance	Line #	Bearing and Distance
L1	N1° 38' 37"W 1091.25'	L27	N68° 59' 30"W 726.16'
L2	N71° 51' 18"W 264.03'	L28	N70° 26' 35"W 748.79'
L3	N75° 58' 14"W 590.57'	L29	N66° 20' 44"W 484.21'
L4	S1° 47' 10"E 794.32'	L30	S58° 32' 56"W 36.10'
L5	S89° 27' 52"W 1828.13'	L31	N43° 03' 33"W 122.14'
L6	S1° 48' 26"E 530.13'	L32	N37° 20' 43"W 197.20'
L7	S1° 48' 26"E 777.24'	L33	N42° 39' 34"W 256.24'
L8	S1° 48' 26"E 1981.02'	L34	N45° 00' 01"W 219.94'
L9	S89° 28' 16"W 158.31'	L35	N42° 31' 47"W 217.37'
L10	N8° 51' 58"W 810.14'	L36	N44° 31' 06"W 216.84'
L11	N23° 27' 55"W 600.97'	L37	N48° 48' 05"W 104.55'
L12	N58° 45' 49"W 785.74'	L38	N43° 03' 33"W 240.43'
L13	S68° 20' 40"E 67.48'	L39	N24° 17' 59"W 106.47'
L14	N75° 32' 47"W 653.95'	L40	N18° 15' 55"W 174.03'
L15	S1° 48' 26"E 670.84'	L41	N36° 46' 21"W 76.19'
L16	S36° 39' 52"E 197.21'	L42	N51° 39' 21"W 71.55'
L17	S38° 31' 51"E 566.02'	L43	N2° 06' 47"W 46.95'
L18	S39° 16' 09"E 489.90'	L44	N85° 18' 58"E 2376.74'
L19	S38° 46' 15"E 383.59'	L45	N2° 47' 08"W 2248.90'
L20	S38° 46' 15"E 887.29'	L49	S2° 06' 47"E 2314.69'
L21	S38° 14' 41"E 493.02'	L50	S3° 05' 54"E 1188.06'
L22	N69° 31' 52"W 495.42'	L51	S2° 11' 33"E 868.94'
L23	N69° 03' 32"W 679.79'	L52	S2° 47' 06"E 338.63'
L24	N69° 29' 15"W 511.49'	L53	N43° 03' 33"W 308.29'
L25	N68° 32' 50"W 276.37'	L54	N43° 03' 33"W 284.42'
L26	N70° 32' 23"W 190.92'	L55	N2° 06' 47"W 160.02'

NORTH VALLEY ROAD NOTES

- *1 SHOWN AS 110.51' ON 8 PM 45 (R7), BY INSPECTION SHOULD BE 108.77' (108.75' GRID LENGTH).
- *2 SHOWN AS 299.39' ON 3 RS 104 (R6), RIGHT OF WAY MARGIN IS 1.13' SOUTHEASTERLY PER 8 PM 45, RESULTING IN 298.26' (298.20' GRID LENGTH).

CORNER NOTES

- FOUND 1-1/2" IRON PIPE HELD AS THE NORTHWEST CORNER OF SECTION 5 (R3)
- FOUND 1" IRON PIPE WITH WOOD PLUG AND TAG MARKED "LS 3202" HELD AS NW 1/16TH CORNER SECTION 5 (R7)
- FOUND 3/4" IRON PIPE IN 10" DIAMETER CONCRETE MONUMENT HELD AS THE NORTH QUARTER CORNER OF SECTION 5 (R3) AND (R7)
- FOUND 1-1/2" IRON PIPE WITH WOOD PLUG AND TAG MARKED "RCE 11128" HELD AS THE NORTHEAST CORNER OF SECTION 5 (NO REFERENCE)
- FOUND 1/2" REBAR, RE-TAGGED WITH 1-1/2" ALUMINUM CAP STAMPED "LS 8925" (NO REFERENCE)
- FOUND 1" IRON PIPE WITH NO TAG (R5)
- FOUND 3/4" IRON PIPE WITH WOOD PLUG AND NAIL (TAG UNREADABLE) HELD AS CENTER OF SECTION 4 (R8)
- FOUND 1-1/2" IRON PIPE WITH WOOD PLUG AND TAG MARKED "LS 4647" HELD AS THE NORTH QUARTER CORNER OF SECTION 9 (R5)
- FOUND 3/4" IRON PIPE WITH NO TAG (R6)
- FOUND 1-1/2" IRON PIPE WITH CAP MARKED "LS 3202" (R7)
- FOUND 1" IRON PIPE WITH CAP MARKED "LS 3202" (R7)
- FOUND 1/2" REBAR WITH NO CAP (R7)
- CALCULATED POSITION OF THE SE CORNER OF THE NORTH ONE HALF OF LOT 4, CORNER SFNF (R7)
- FOUND 1/2" IRON PIPE IN LINE WITH EAST-WEST FENCE PER (R5), HELD FOR LINE AND DISTANCE TO WEST QUARTER CORNER OF SECTION 4.
- SET 5/8" REBAR & 1 1/2" ALUMINUM CAP, STAMPED 'L.S. 8925' ESTABLISHED PER (R5).
- SET 5/8" REBAR & 1 1/2" ALUMINUM CAP, STAMPED 'L.S. 8925', AT THE PROBABLE LOCATION FOR WOOD POST (POSSIBLE SECTION CORNER) CALLED FOR IN 1871 S&O #33 AND S&O #34, LOCATION SHOWN FALLS 0.5' WEST OF THE SOUTHERLY PROJECTION OF AN EXISTING FENCE (FENCE IS 1950' TO THE NORTH), CORNER IS ESTABLISHED AT 60 CHAINS (3959.23' GRID DISTANCE) FROM CORNER #5 USING A STRAIGHT LINE PROJECTION FROM CORNER #5 THROUGH CORNER #15.
- ESTABLISHED CORNER OF S&O #33 AT INTERSECTION OF (LONG) FENCE LINES, SEE DETAIL 'B'.
- ESTABLISHED CORNER OF S&O #33 AT EXISTING FENCE CORNER.
- CALCULATED CORNER OF S&O #33 AT RECORD BEARING (ROTATED) AND DISTANCE FROM CORNER #18.
- CALCULATED CORNER OF S&O #33 AT RECORD BEARING (ROTATED) FROM CORNER #19 AT THE INTERSECTION WITH THE SOUTHERLY PROJECTION OF THE WESTERLY FENCE.



TETRA TECH
 www.tetrattech.com
 865 Aerovista Place, Suite 230
 San Luis Obispo, CA 93401
 (805) 542-9052