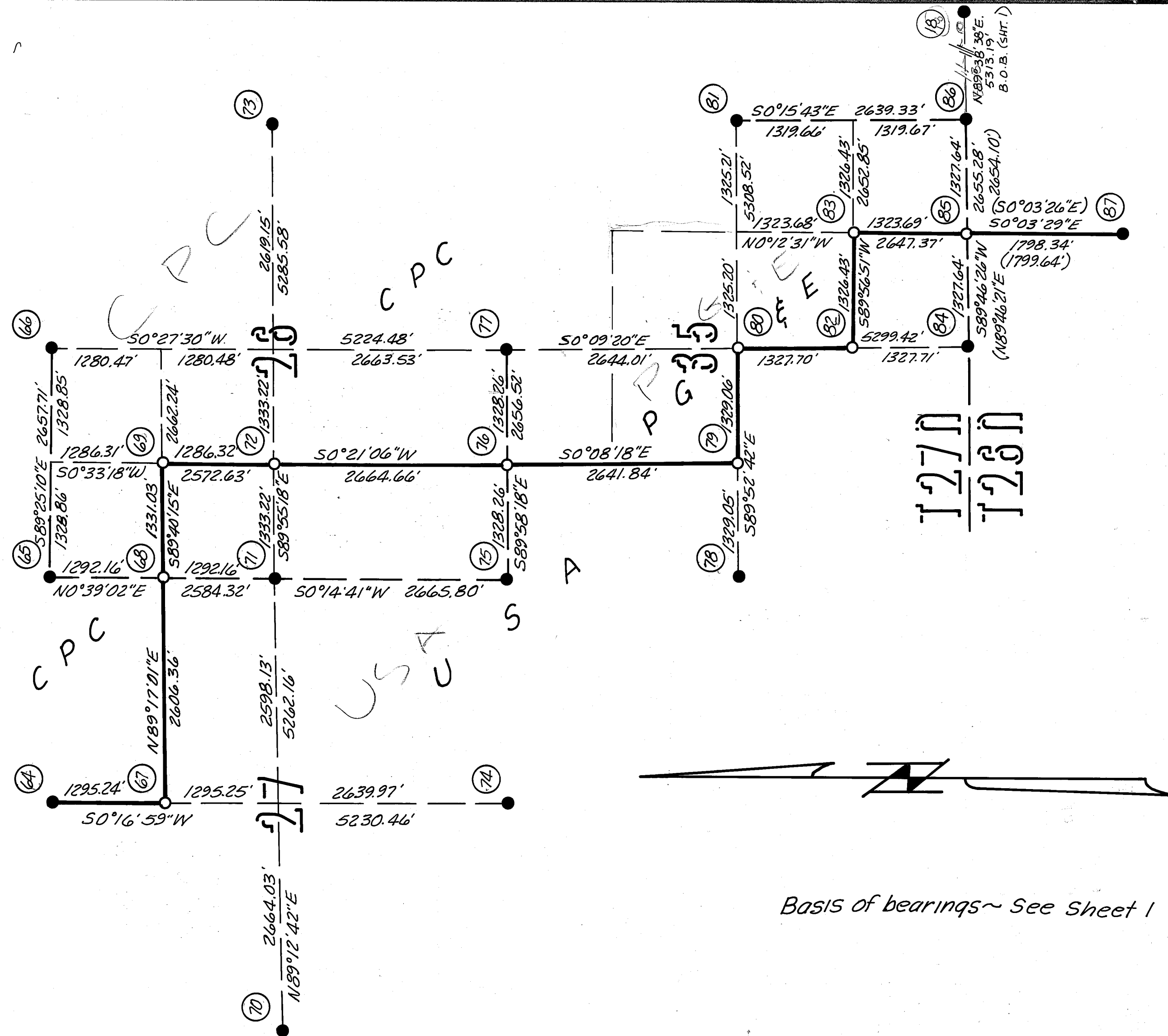


LEGEND

- Corner note NR - see sheets 6&7
- Fd. monument per cor. notes.
- Set ACAP per corner notes.
- Line marked & posted to USFS Spec's.
- Dimension line.
- () Data per ARS 6&7.
- [] Orig. GLO data.
- [] 1940 GLO resurvey data.
- CPC Collins Pine Co.
- PG&E Pacific Gas & Electric



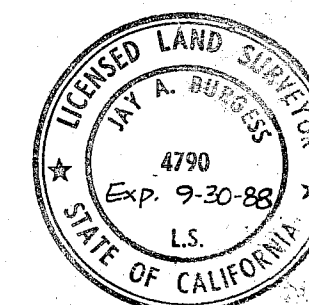
Basis of bearings ~ See Sheet 1

SURVEY HISTORY

1875 Wm Minto surveys subdivision lines.
 1950-87 Corner recovery made by CAF foresters, local surveyors and government employees.

RECORD OF SURVEY FOR LASSEN NATIONAL FOREST "HAMHUM CADASTRAL SURVEY" 'PLUMAS'

IN SECTIONS 2 & 12, T.26N., R.6E., SECTIONS 4, 5, 6, 7, 8, & 18, T.26N., R.7E., SECTIONS 5, 8, 17, 26, 27 & 35, T.27N., R.6E., SECTIONS 30 & 31, T.27N., R.7E., SECTION 31, T.28N., R.6E., ALL IN MOUNT DIABLO MERIDIAN & IN THE UNINCORPORATED TERRITORY OF THE COUNTY OF PLUMAS, STATE OF CALIFORNIA



SCALE: 1"=1000'
BURGESS Land Surveys
 JIM FOSTER SR.
 OCTOBER, 1987
 SHEET 4 OF 7