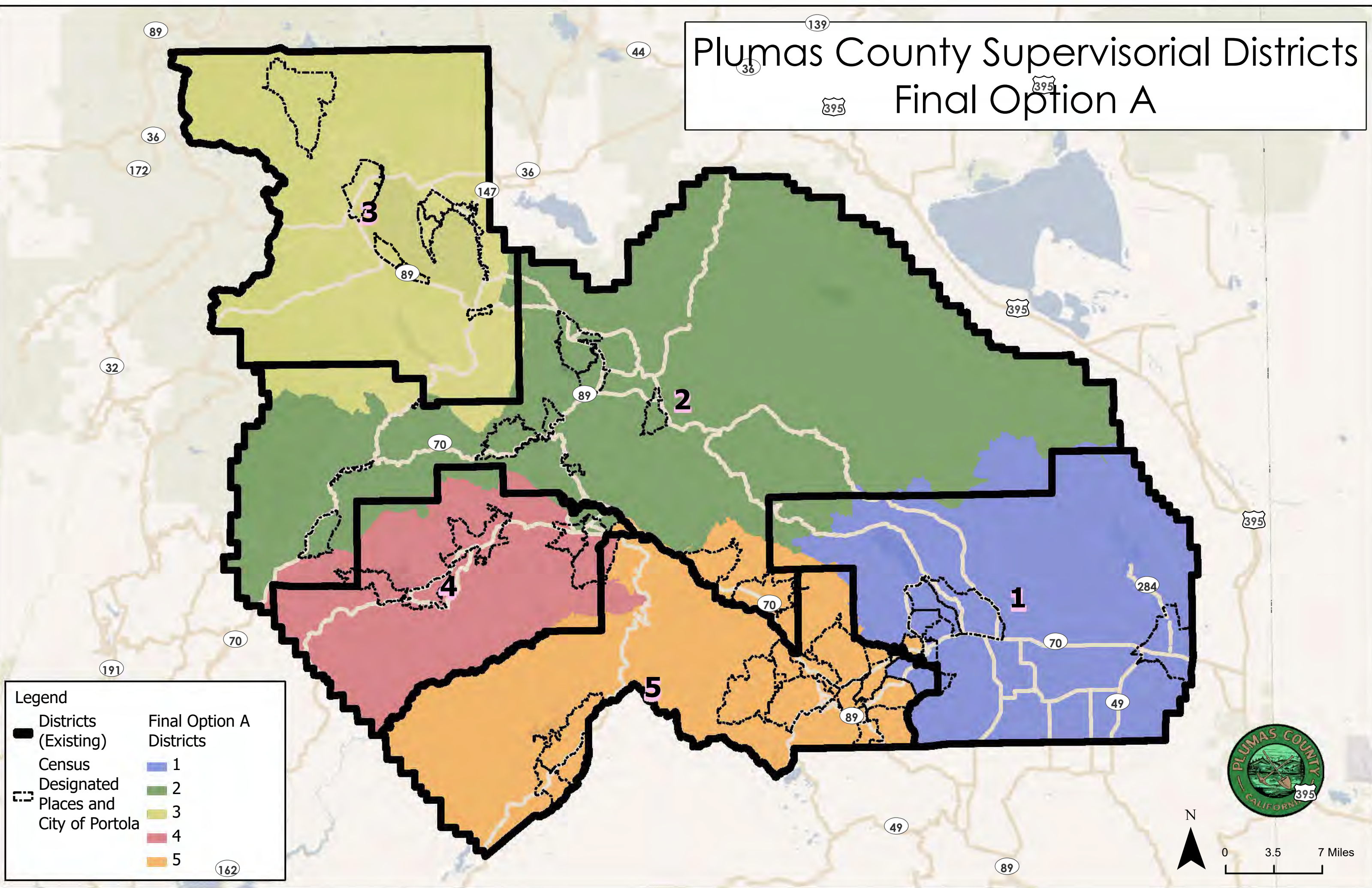


# Plumas County Supervisorial Districts Final Option A



**Legend**

Districts (Existing)

Census Designated Places and City of Portola

**Final Option A Districts**

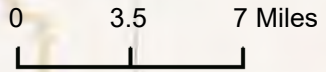
1

2

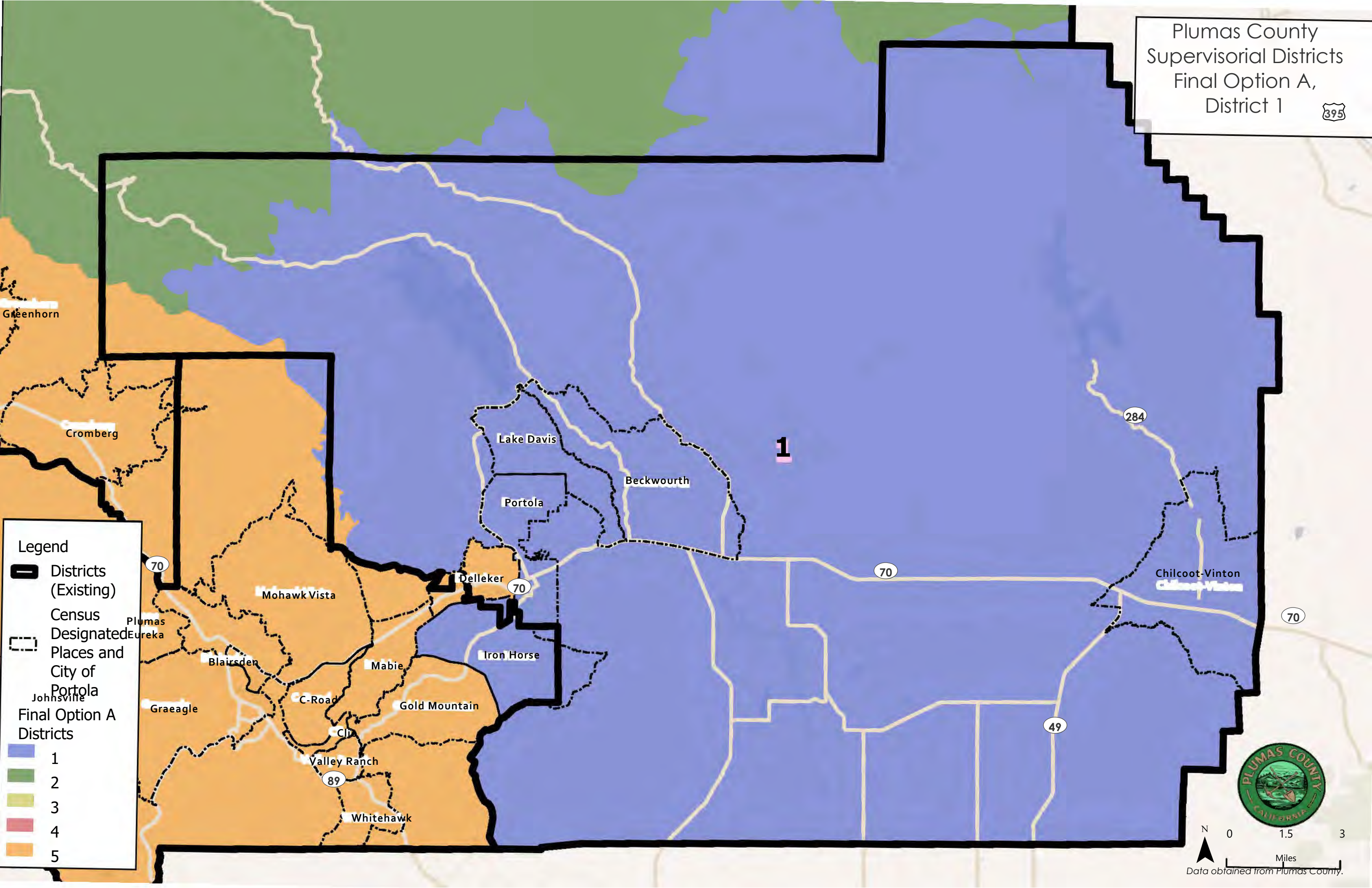
3

4

5



Plumas County  
Supervisory Districts  
Final Option A,  
District 1



**Legend**

Districts (Existing)

Census Designated Places and City of Portola

**Final Option A Districts**

	1
	2
	3
	4
	5



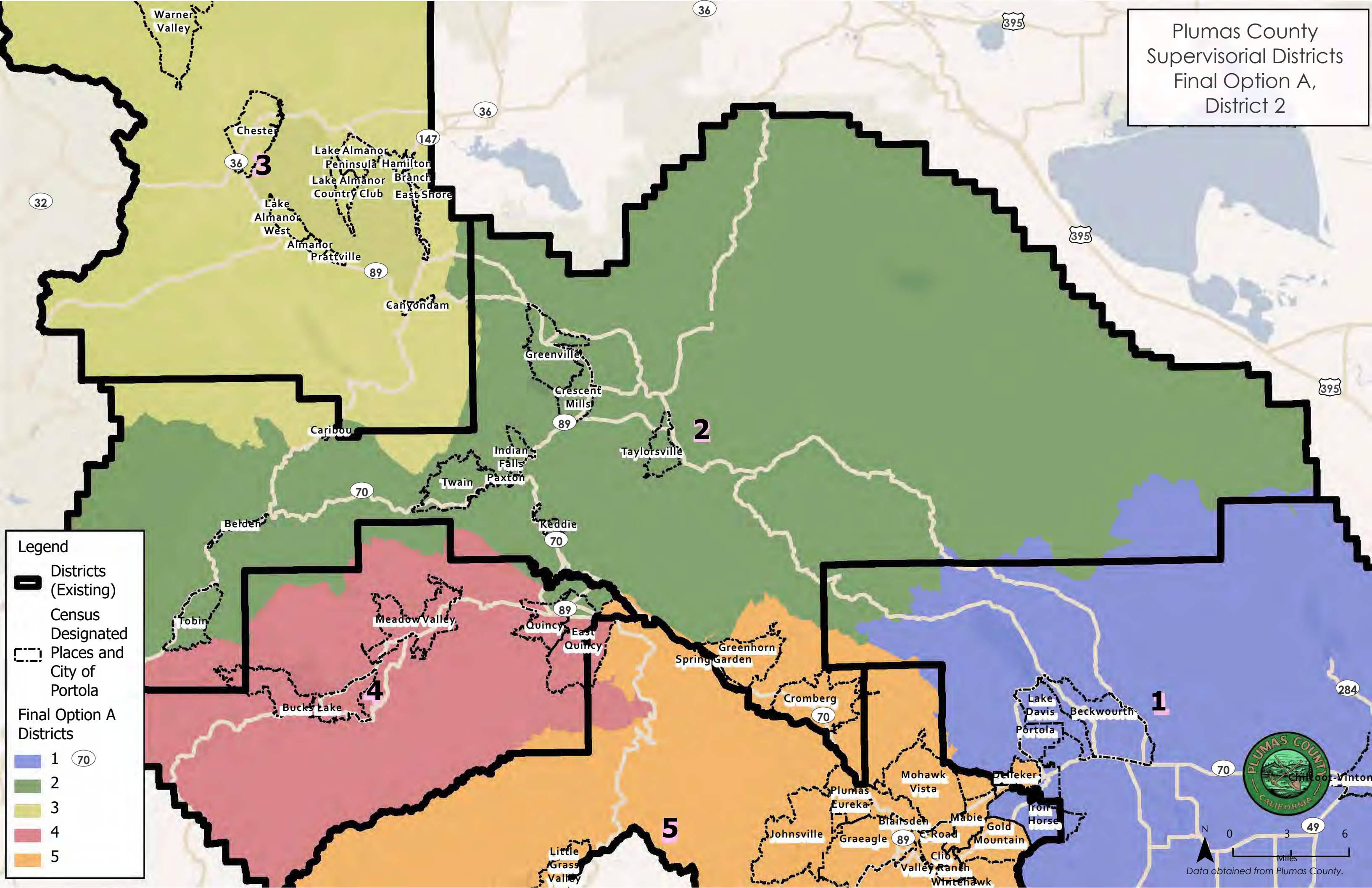
N

0 1.5 3

Miles

Data obtained from Plumas County.


Plumas County  
Supervisory Districts  
Final Option A,  
District 2



**Legend**

- Districts (Existing)
- Census Designated Places and City of Portola
- Final Option A Districts

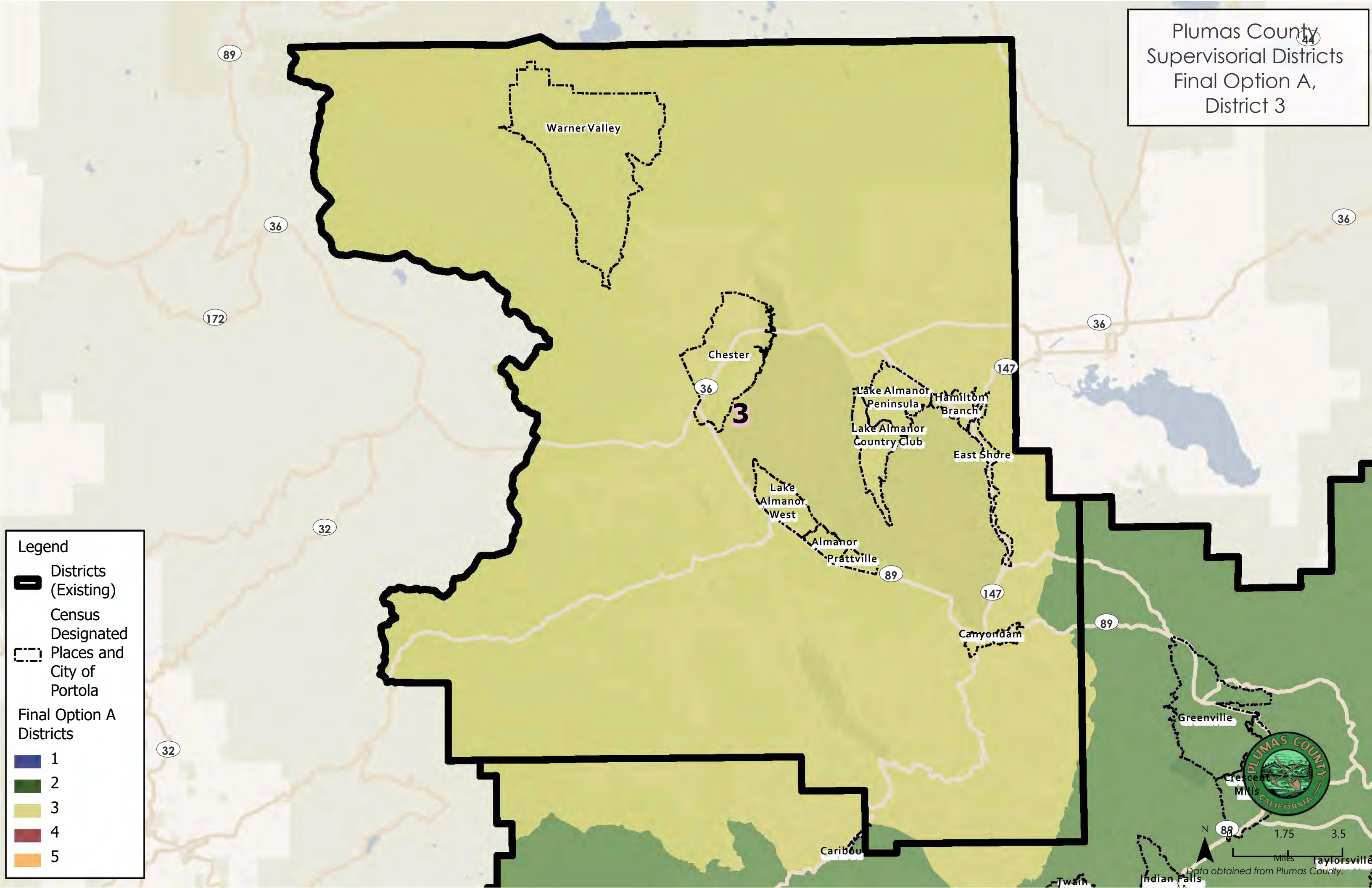
1	70
2	
3	
4	
5	



0 3 6 Miles

Data obtained from Plumas County.

Plumas County  
Supervisory Districts  
Final Option A,  
District 3



Legend

Districts  
(Existing)

Census  
Designated

Places and  
City of  
Portola

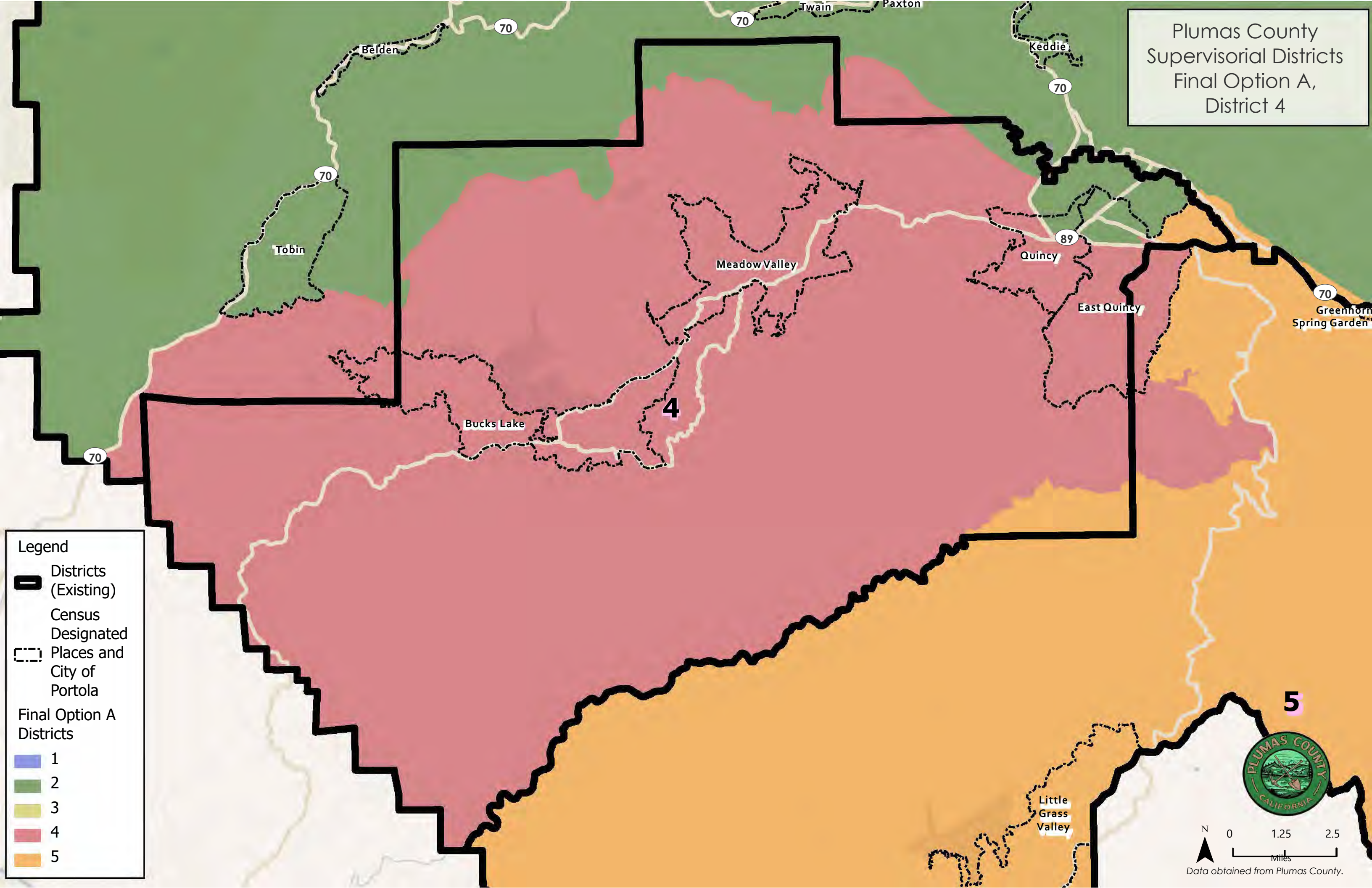
Final Option A  
Districts

- 1
- 2
- 3
- 4
- 5



N  
1.75 3.5  
Miles  
Data obtained from Plumas County.

Plumas County  
Supervisory Districts  
Final Option A,  
District 4



Legend

Districts  
(Existing)

Census  
Designated  
Places and  
City of  
Portola

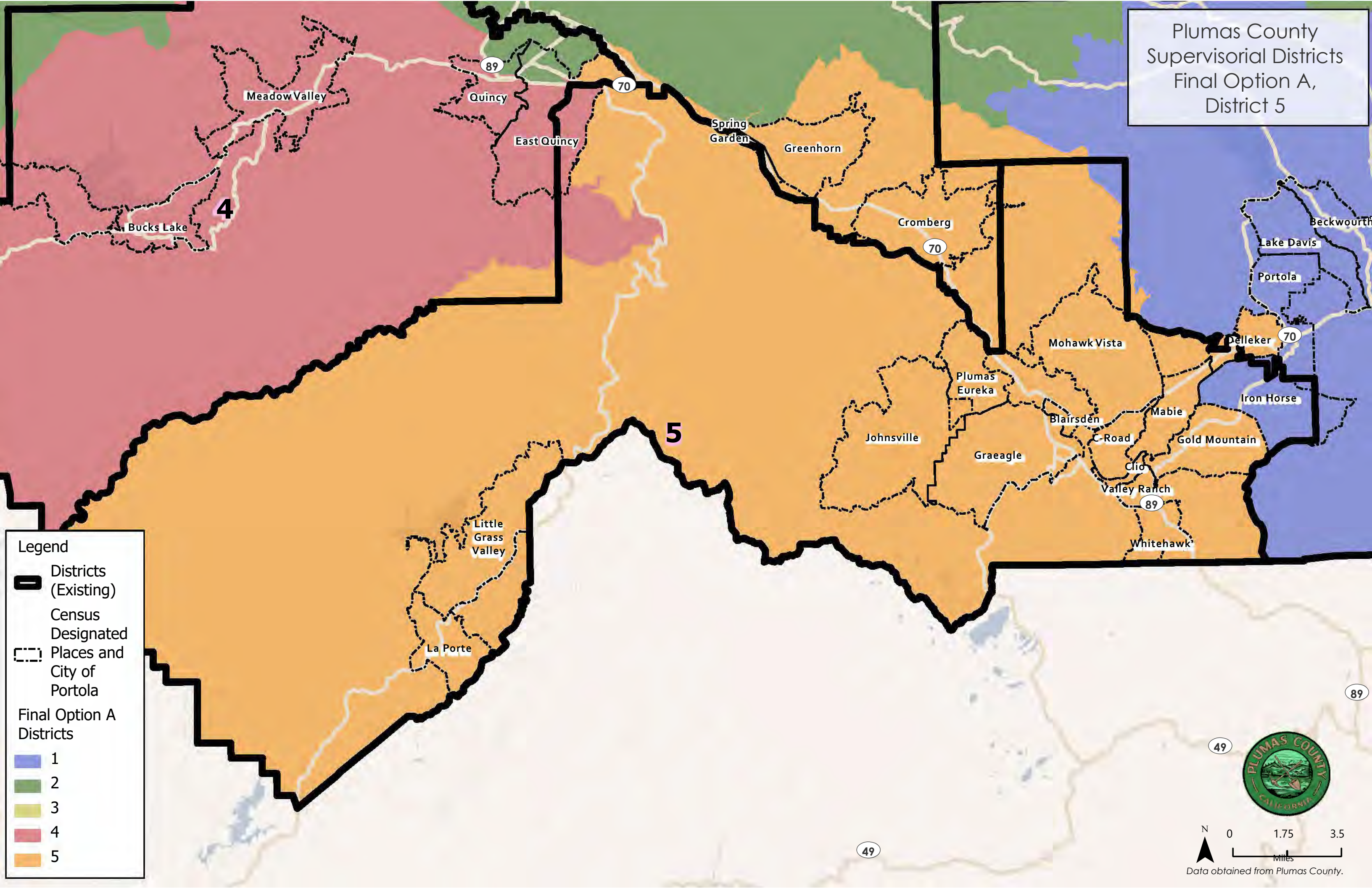
Final Option A  
Districts

- 1
- 2
- 3
- 4
- 5



N  
0 1.25 2.5  
Miles  
Data obtained from Plumas County.

Plumas County  
Supervisory Districts  
Final Option A,  
District 5



Legend

- Districts (Existing)
- Census Designated Places and City of Portola
- Final Option A Districts

1
2
3
4
5

49

89

0 1.75 3.5 Miles

N

PLUMAS COUNTY CALIFORNIA

Data obtained from Plumas County.

# Plumas County Redistricting Summary Statistics

Final Option A

11/29/2021



## Ideal Population Criterion

Ideal Population	3,968	
Overall Range	3.3%	
< 5.0%	5.0 - 10.0%	> 10.0%

## Total Population & Deviation per District

District	Total Population	Over / Under Ideal	Deviation From Ideal
1	3,897	-71	-1.8%
2	4,011	43	1.1%
3	3,988	20	0.5%
4	4,026	58	1.5%
5	3,917	-51	-1.3%

## Total Population by Race/Ethnicity per District

District	White	Black or African American	American Indian or Alaska Native	Asian	Native Hawaiian and Pacific Islander	Some Other Race	Two or More Races	Hispanic/Latino
1	76.9%	0.4%	1.3%	0.7%	0.5%	0.2%	5.6%	14.4%
2	78.6%	0.3%	5.0%	0.3%	0.1%	0.7%	7.0%	8.0%
3	85.3%	0.2%	0.8%	1.0%	0.2%	0.4%	5.1%	7.1%
4	80.9%	1.4%	1.3%	1.0%	0.2%	0.8%	6.3%	8.0%
5	82.4%	0.3%	1.3%	0.6%	0.1%	0.7%	4.0%	10.7%

2020 Census P.L 94-171 Redistricting Data Summary Files Total Population by race and Hispanic/Latino origin.

## CVAP by Race/Ethnicity per District

District	White	Black or African American	American Indian or Alaska Native	Asian	Native Hawaiian and Pacific Islander	Two or More Races	Hispanic/Latino
1	85.2%	0.1%	3.4%	0.8%	1.6%	1.4%	7.4%
2	80.0%	0.0%	3.4%	4.0%	0.0%	9.6%	3.1%
3	90.0%	0.0%	0.1%	0.1%	0.0%	0.7%	8.7%
4	85.7%	3.2%	1.6%	0.1%	0.0%	2.2%	7.3%
5	90.6%	0.0%	0.2%	0.6%	0.0%	0.0%	6.6%

2015-2019 (5-year) American Community Survey (ACS) Citizen Voting-age Population (CVAP) by Race and Ethnicity Special Tabulation. Rounding may lead to summation of race/ethnicity percentages not equal to 100% (+/- 1%)

# Plumas County Redistricting Summary Statistics

Final Option A

11/29/2021



## Preservation of Geographic Integrity Criteria (i.e., minimize division of cities, communities of interest, etc.)

COI Category	Total # of COIs	# of COIs Preserved in Minimum Districts	% of COIs Preserved in Minimum Districts	COIs Not Preserved in Minimum # of Districts
Census Designated Places (CDP)	45	43	96%	East Quincy, Quincy
Precints	151	127	84%	11100, 11130, 12101, 14101, 20100, 22220, 22230, 22260, 23000, 23201, 23210, 23213, 23371, 34370, 35372, 42230, 42250, 42251, 43210, 43230, 43242, 51101, 51130, 52230
Subdivisions	125	125	100%	
Feather River College Trustee Areas	5	1*	20%	2, 3, 4, 5 <small>*One trustee area is split between multiple districts, but preserved in the minimum number of districts based on the trustee area's total population (i.e., split between two districts rather than three-plus).</small>

## Contiguity Criterion

Are all the districts contiguous? **Yes**

## Compactness Measures per District

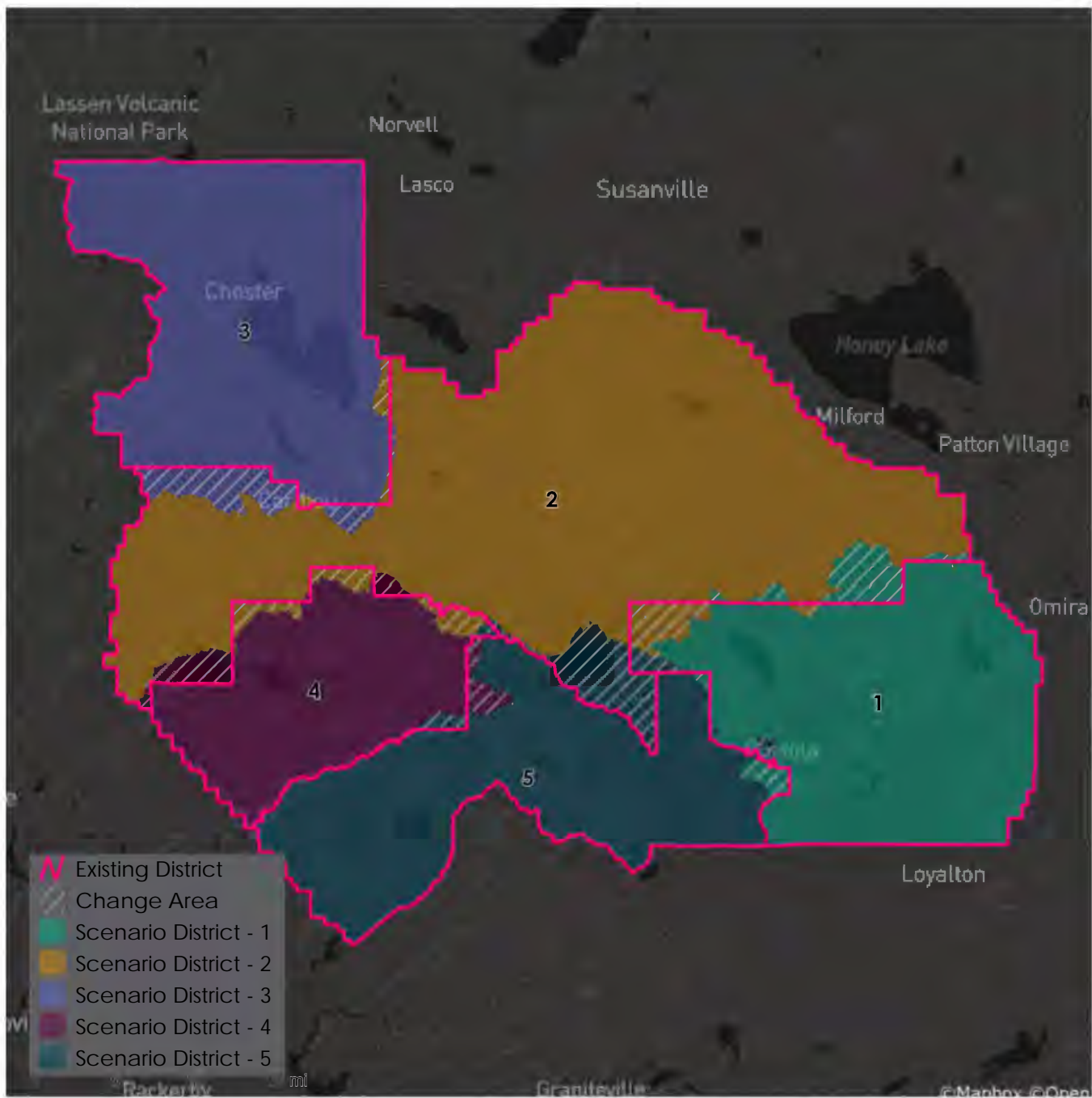
District	Polsby-Popper	Schwartzberg	Reock	Convex Hull	Length-Width
1	0.35	1.68	0.60	0.87	0.77
2	0.18	2.33	0.28	0.71	0.48
3	0.39	1.60	0.50	0.83	0.90
4	0.33	1.73	0.43	0.84	0.67
5	0.22	2.12	0.35	0.70	0.62

Polsby-Popper, Reock, Convex Hull, and Length-Width scores fall within the range of 0-1, with 0 being the least compact and 1 being the most compact. In comparison, a Schwartzberg score of 1 is the most compact and higher scores are increasingly less compact.

# Plumas County Redistricting Summary Statistics

Final Option A

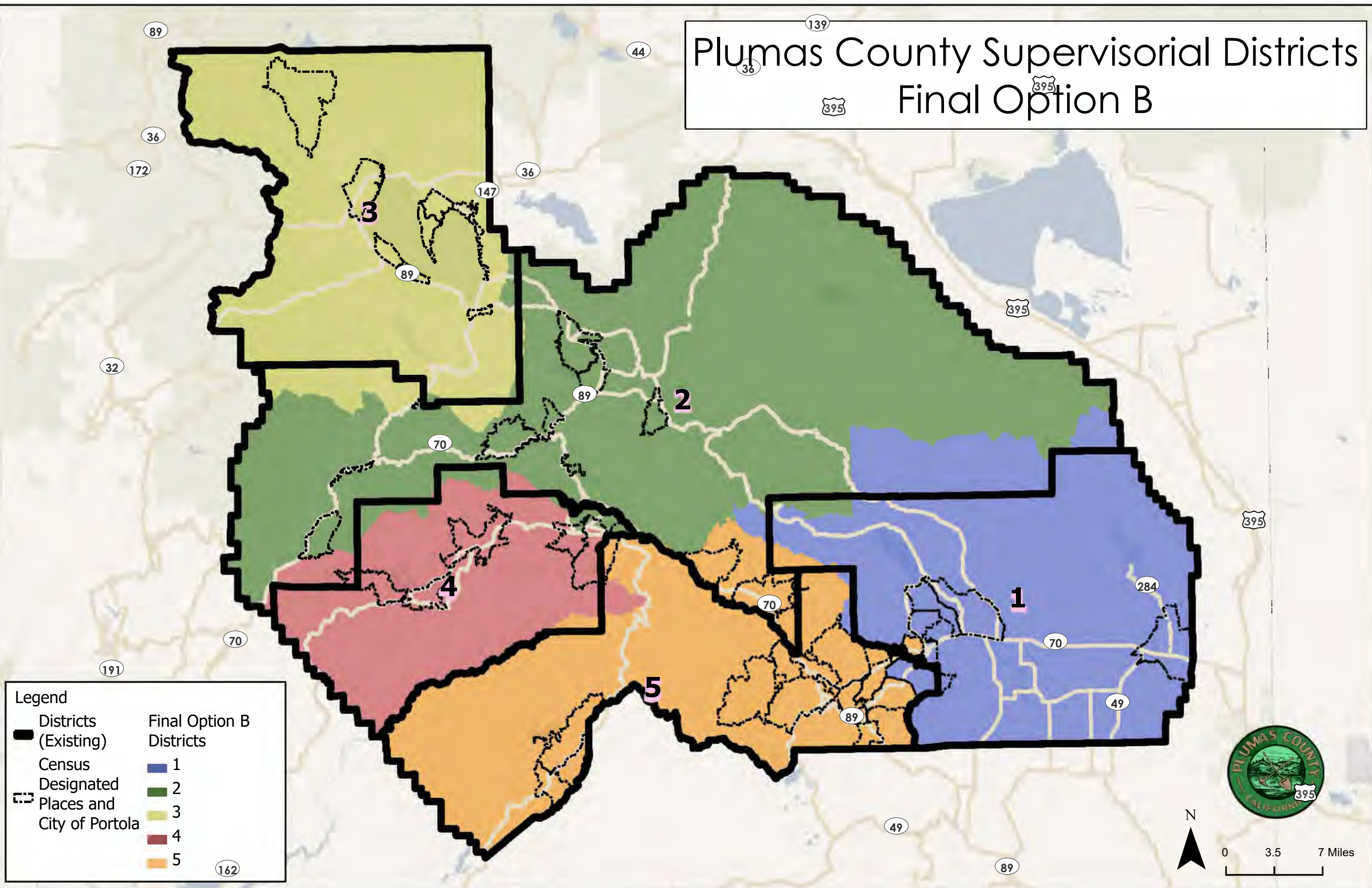
11/29/2021



## Metadata

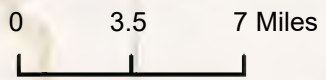
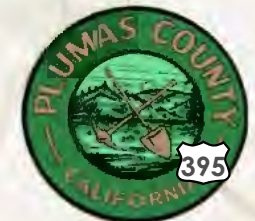
Run Time Stamp:	2021-11-29 15:55:27
Workflow Directory:	X:\F2066_Plumas_County\Projects\Alteryx\
District Scenario:	File: gdb:X:\F2066_Plumas_County\Data\Redist.gdb   FinalOptionA

# Plumas County Supervisorial Districts Final Option B

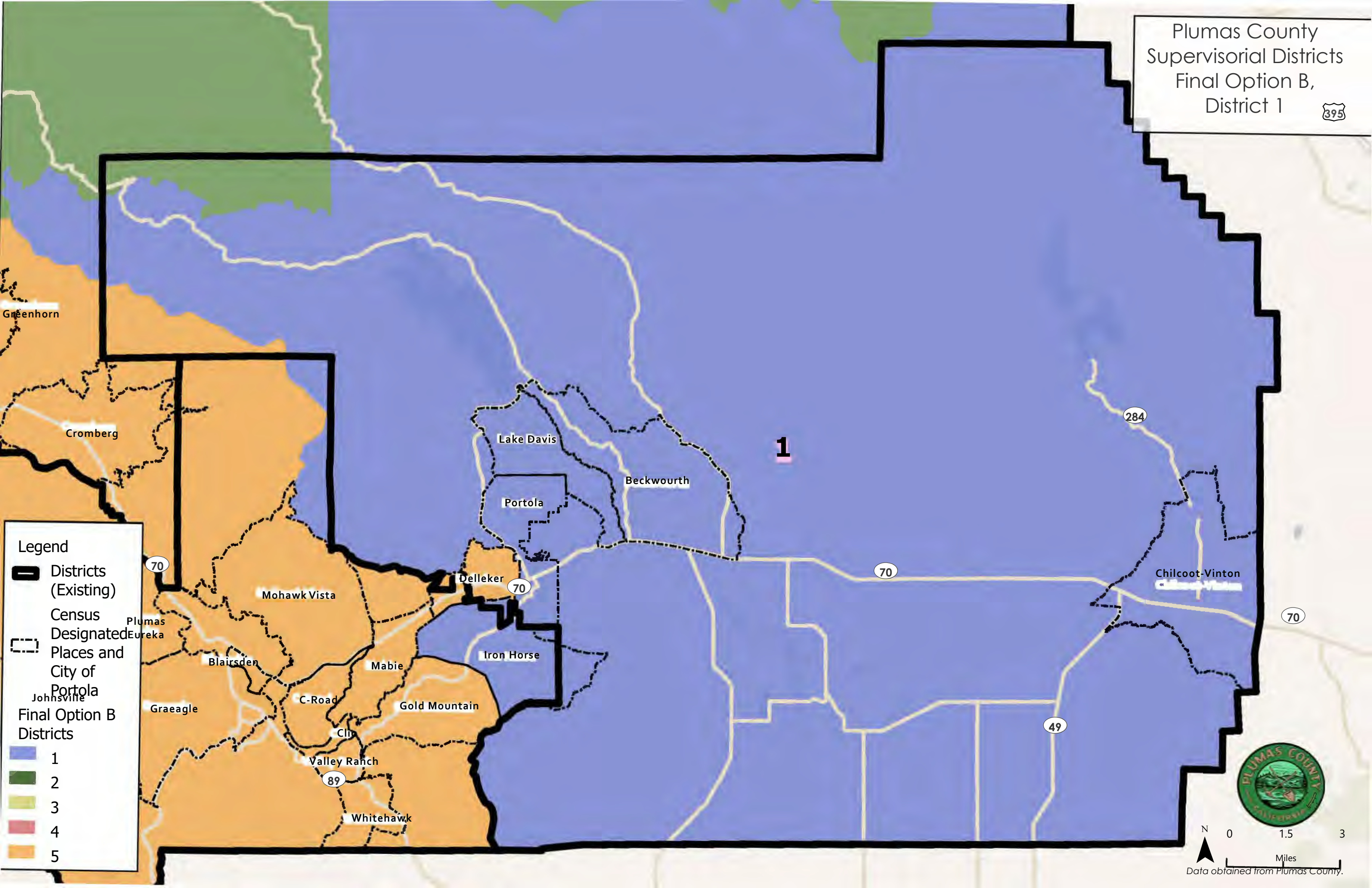


**Legend**

Districts (Existing)	Final Option B Districts
Census Designated Places and City of Portola	1
	2
	3
	4
	5

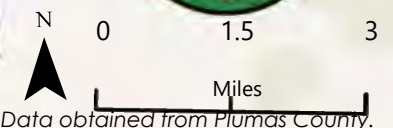


Plumas County  
Supervisory Districts  
Final Option B,  
District 1



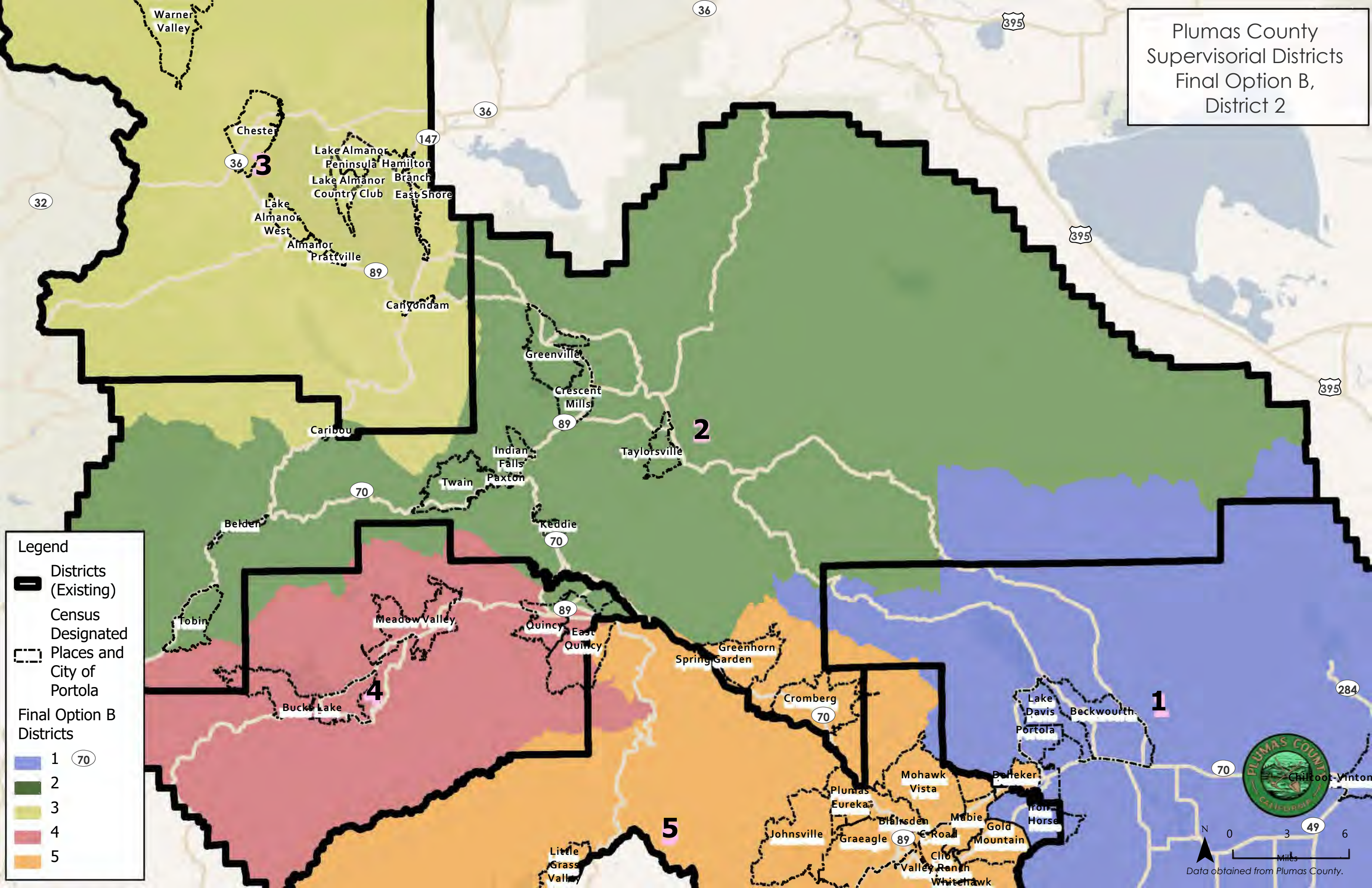
Legend

- Districts (Existing)
- Census Designated Places and City of Portola
- Final Option B Districts
- 1
- 2
- 3
- 4
- 5




Data obtained from Plumas County.

Plumas County  
Supervisory Districts  
Final Option B,  
District 2

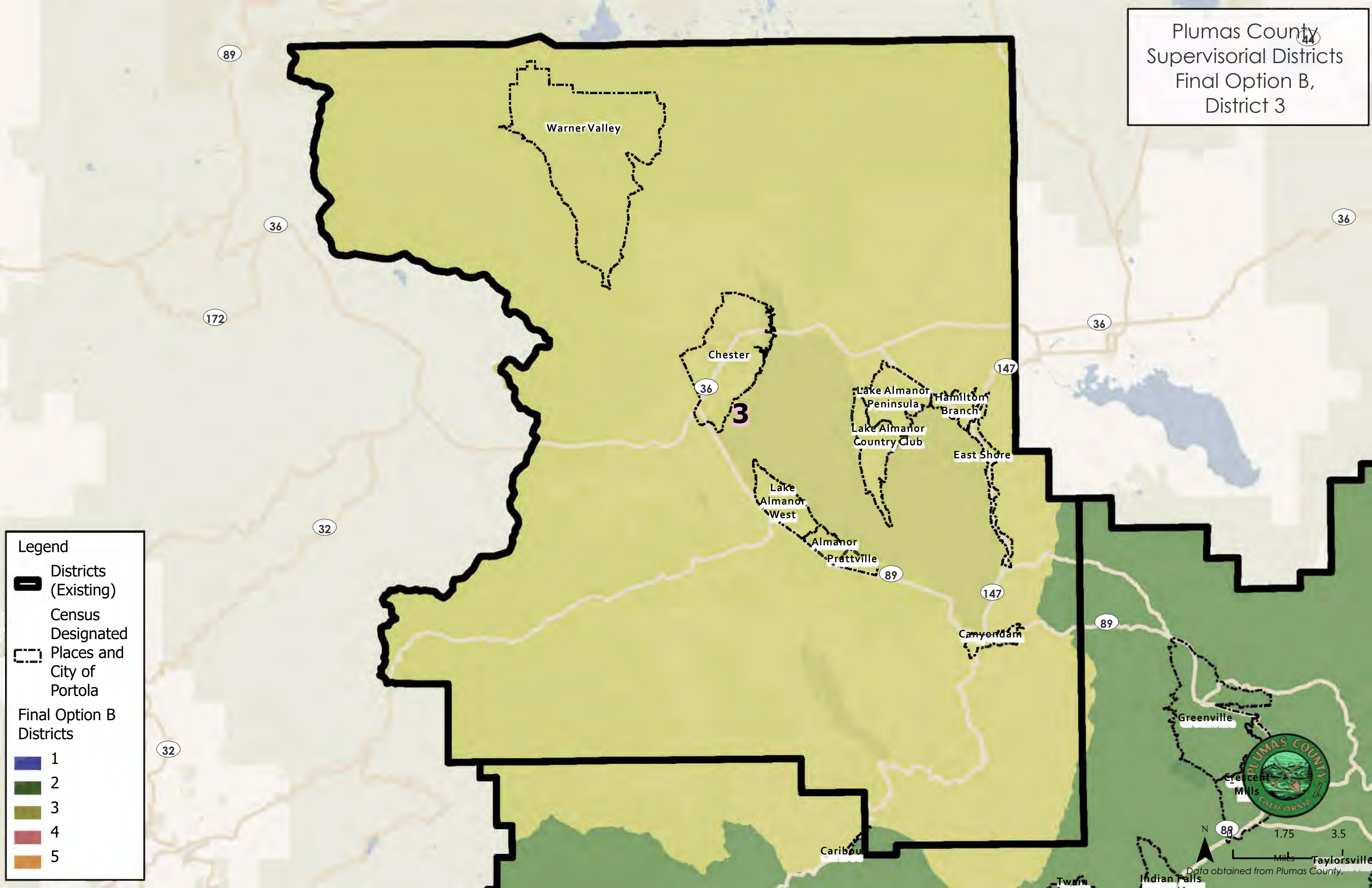


**Legend**

- Districts (Existing)
- Census Designated Places and City of Portola
- Final Option B Districts**
  - 1
  - 2
  - 3
  - 4
  - 5

  
N  
0 3 6  
Miles  
Data obtained from Plumas County.

Plumas County  
Supervisory Districts  
Final Option B,  
District 3



Legend

Districts  
(Existing)

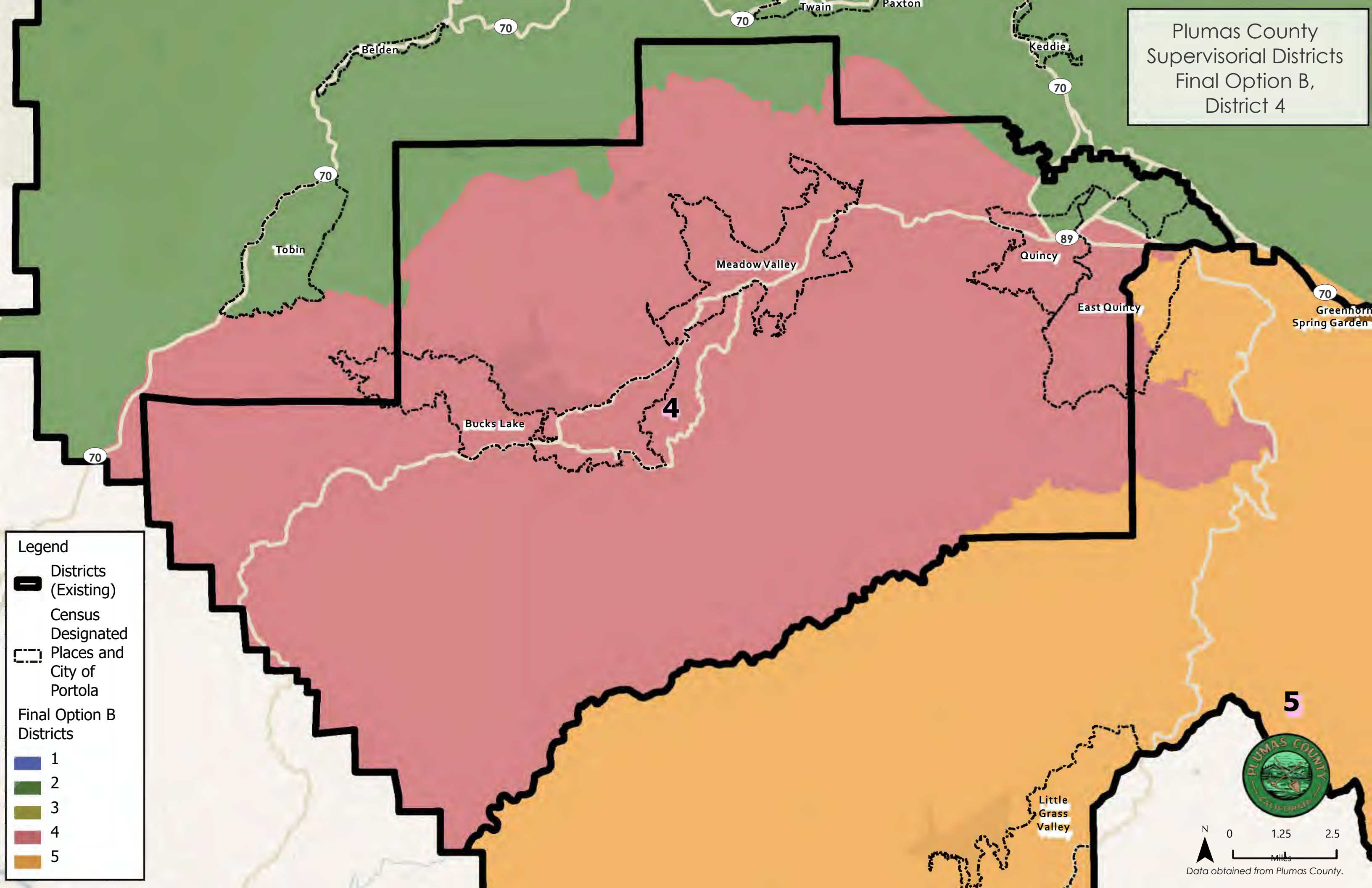
Census  
Designated

Places and  
City of  
Portola

Final Option B  
Districts


- 1
- 2
- 3
- 4
- 5

Plumas County  
Supervisory Districts  
Final Option B,  
District 4



Legend

 Districts  
(Existing)

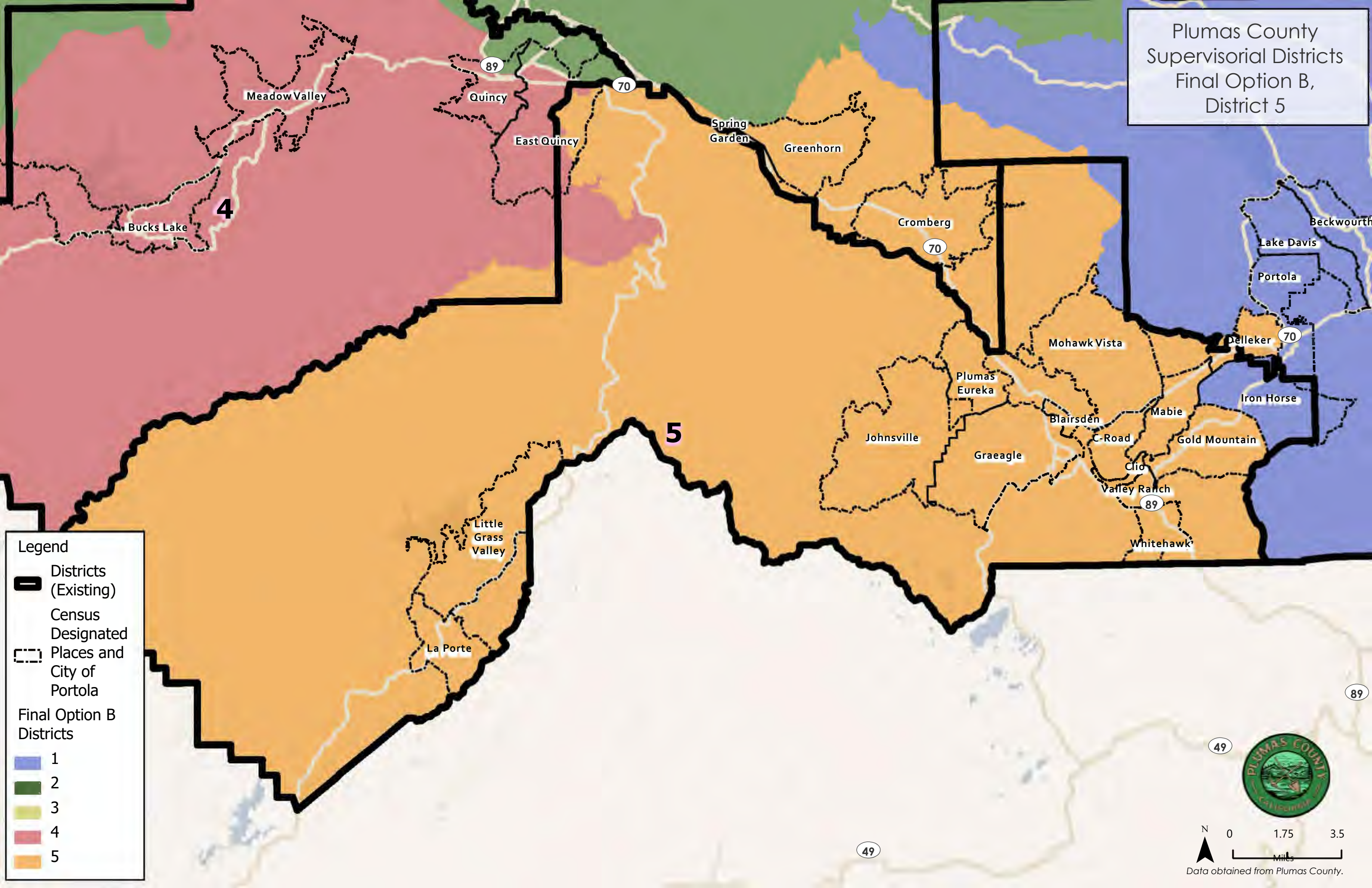
 Census  
Designated  
Places and  
City of  
Portola

Final Option B  
Districts

-  1
-  2
-  3
-  4
-  5

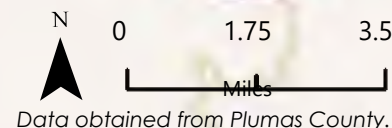


Plumas County  
Supervisory Districts  
Final Option B,  
District 5



Legend

- Districts (Existing)
- Census Designated Places and City of Portola
- Final Option B Districts
- 1
- 2
- 3
- 4
- 5



Data obtained from Plumas County.

# Plumas County Redistricting Summary Statistics

Final Option B

11/29/2021



## Ideal Population Criterion

Ideal Population	3,968	
Overall Range	3.3%	
< 5.0%	5.0 - 10.0%	> 10.0%

## Total Population & Deviation per District

District	Total Population	Over / Under Ideal	Deviation From Ideal
1	3,897	-71	-1.8%
2	4,027	59	1.5%
3	3,988	20	0.5%
4	3,931	-37	-0.9%
5	3,996	28	0.7%

## Total Population by Race/Ethnicity per District

District	White	Black or African American	American Indian or Alaska Native	Asian	Native Hawaiian and Pacific Islander	Some Other Race	Two or More Races	Hispanic/Latino
1	76.9%	0.4%	1.3%	0.7%	0.5%	0.2%	5.6%	14.4%
2	78.2%	0.3%	4.9%	0.3%	0.1%	0.8%	7.4%	8.0%
3	85.3%	0.2%	0.8%	1.0%	0.2%	0.4%	5.1%	7.1%
4	80.6%	1.4%	1.6%	1.1%	0.2%	0.9%	6.0%	8.3%
5	83.1%	0.4%	1.2%	0.6%	0.1%	0.6%	3.9%	10.2%

2020 Census P.L 94-171 Redistricting Data Summary Files Total Population by race and Hispanic/Latino origin.

## CVAP by Race/Ethnicity per District

District	White	Black or African American	American Indian or Alaska Native	Asian	Native Hawaiian and Pacific Islander	Two or More Races	Hispanic/Latino
1	85.2%	0.1%	3.4%	0.8%	1.6%	1.4%	7.4%
2	78.1%	0.0%	3.5%	4.0%	0.0%	9.8%	3.7%
3	90.0%	0.0%	0.1%	0.1%	0.0%	0.7%	8.7%
4	86.2%	3.2%	1.6%	0.1%	0.0%	2.2%	7.0%
5	92.2%	0.0%	0.0%	0.6%	0.0%	0.0%	6.3%

2015-2019 (5-year) American Community Survey (ACS) Citizen Voting-age Population (CVAP) by Race and Ethnicity Special Tabulation. Rounding may lead to summation of race/ethnicity percentages not equal to 100% (+/- 1%)

# Plumas County Redistricting Summary Statistics

Final Option B

11/29/2021



## Preservation of Geographic Integrity Criteria (i.e., minimize division of cities, communities of interest, etc.)

COI Category	Total # of COIs	# of COIs Preserved in Minimum Districts	% of COIs Preserved in Minimum Districts	COIs Not Preserved in Minimum # of Districts
Census Designated Places (CDP)	45	43	96%	East Quincy, Quincy
Precints	151	127	84%	11100, 11130, 14101, 20100, 20110, 22220, 22230, 22260, 23000, 23201, 23210, 23213, 23371, 34370, 35372, 42230, 42251, 43210, 43230, 43242, 51101, 51130, 52100, 52230
Subdivisions	125	125	100%	
Feather River College Trustee Areas	5	1*	20%	2, 3, 4, 5  *One trustee area is split between multiple districts, but preserved in the minimum number of districts based on the trustee area's total population (i.e., split between two districts rather than three-plus).

## Contiguity Criterion

Are all the districts contiguous? **Yes**

## Compactness Measures per District

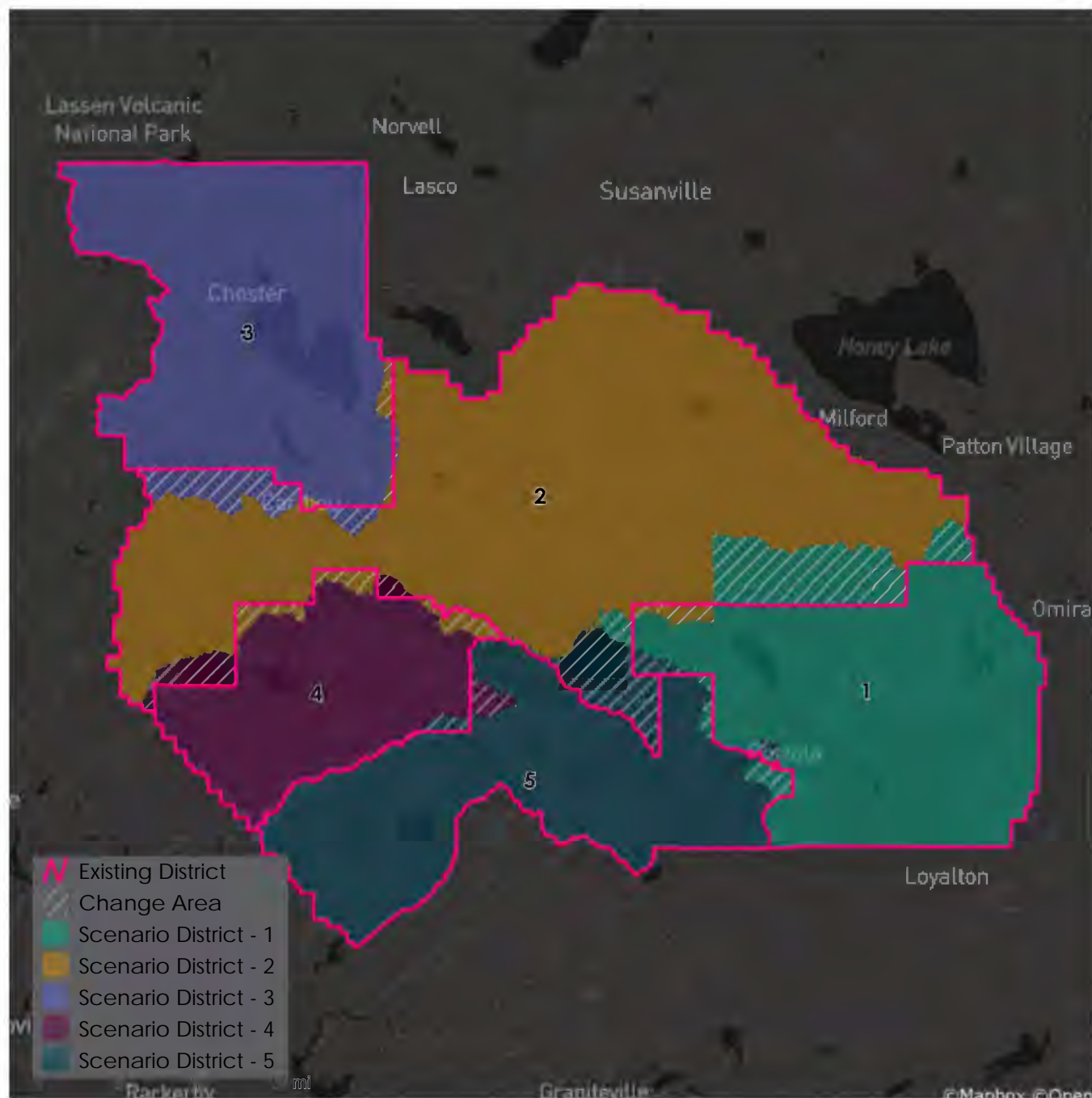
District	Polsby-Popper	Schwartzberg	Reock	Convex Hull	Length-Width
1	0.37	1.65	0.52	0.83	0.73
2	0.20	2.26	0.26	0.70	0.48
3	0.40	1.58	0.50	0.83	0.90
4	0.32	1.77	0.42	0.84	0.66
5	0.23	2.09	0.35	0.70	0.62

Polsby-Popper, Reock, Convex Hull, and Length-Width scores fall within the range of 0-1, with 0 being the least compact and 1 being the most compact. In comparison, a Schwartzberg score of 1 is the most compact and higher scores are increasingly less compact.

# Plumas County Redistricting Summary Statistics

Final Option B

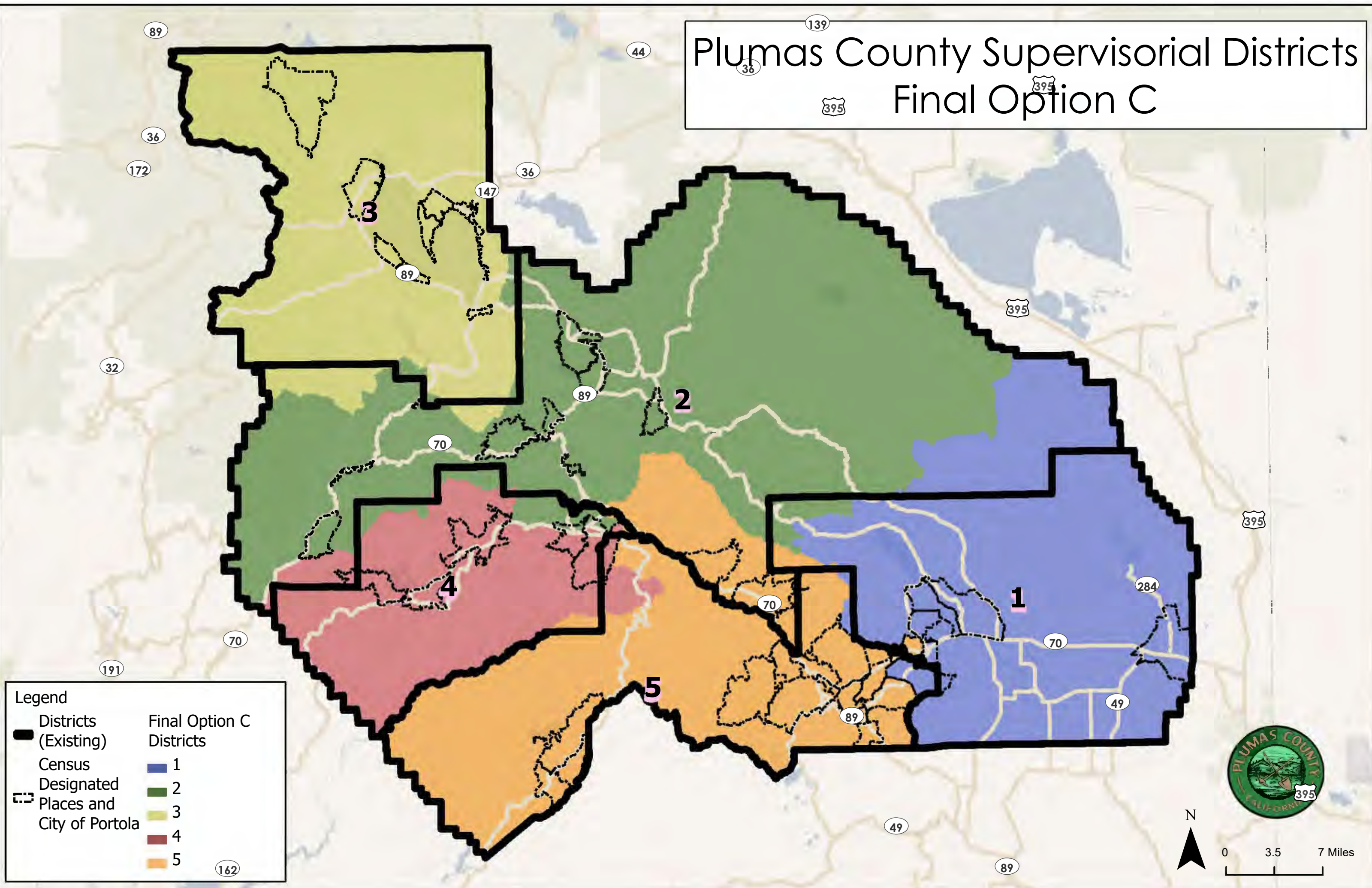
11/29/2021



## Metadata

Run Time Stamp:	2021-11-29 15:57:17
Workflow Directory:	X:\F2066_Plumas_County\Projects\Alteryx\
District Scenario:	File: gdb:X:\F2066_Plumas_County\Data\Redist.gdb\\FinalOptionB

# Plumas County Supervisorial Districts Final Option C



**Legend**

Districts (Existing)

Census Designated Places and City of Portola

**Final Option C Districts**

1

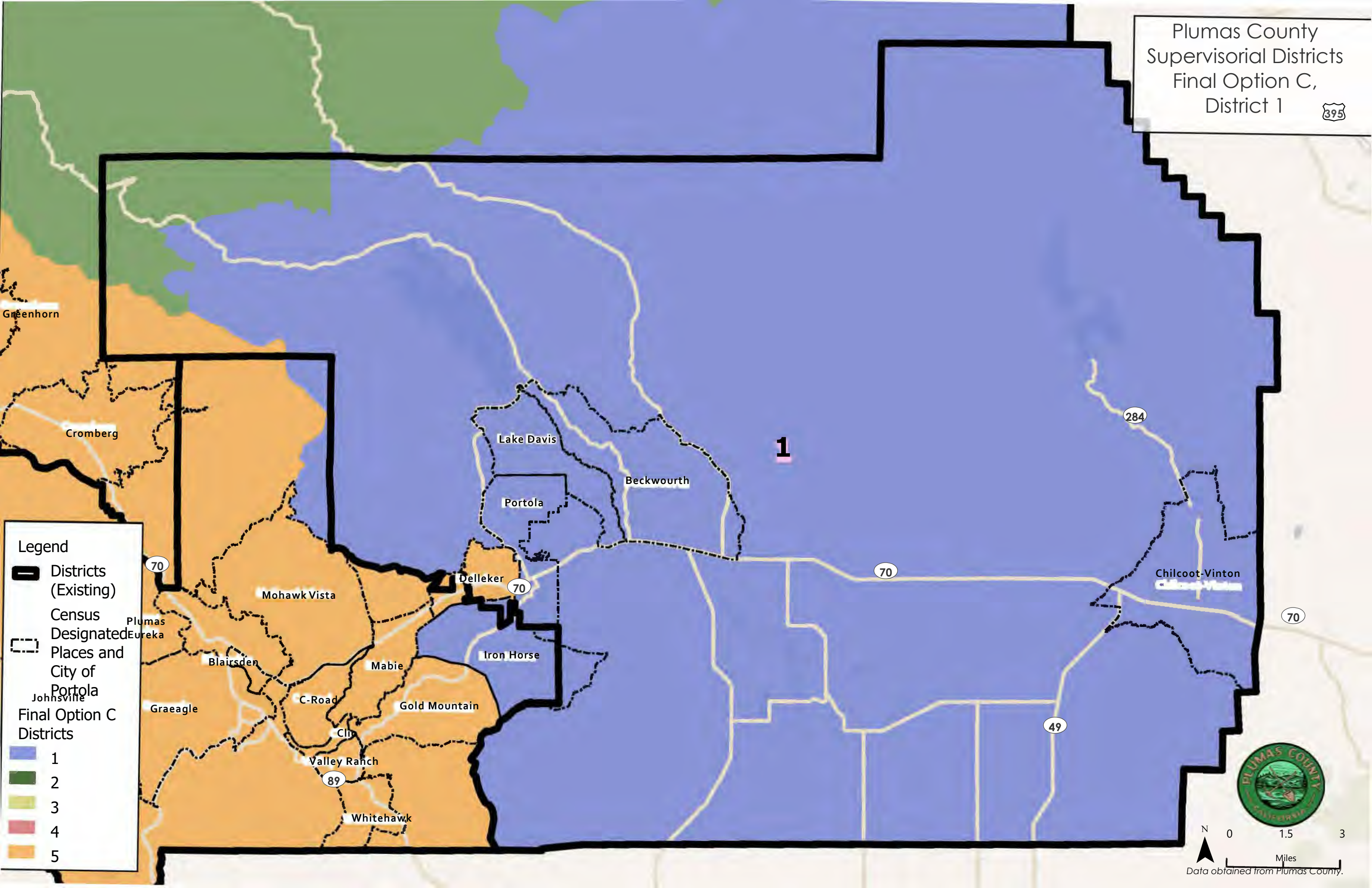
2

3

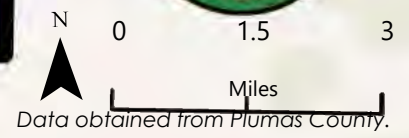
4

5

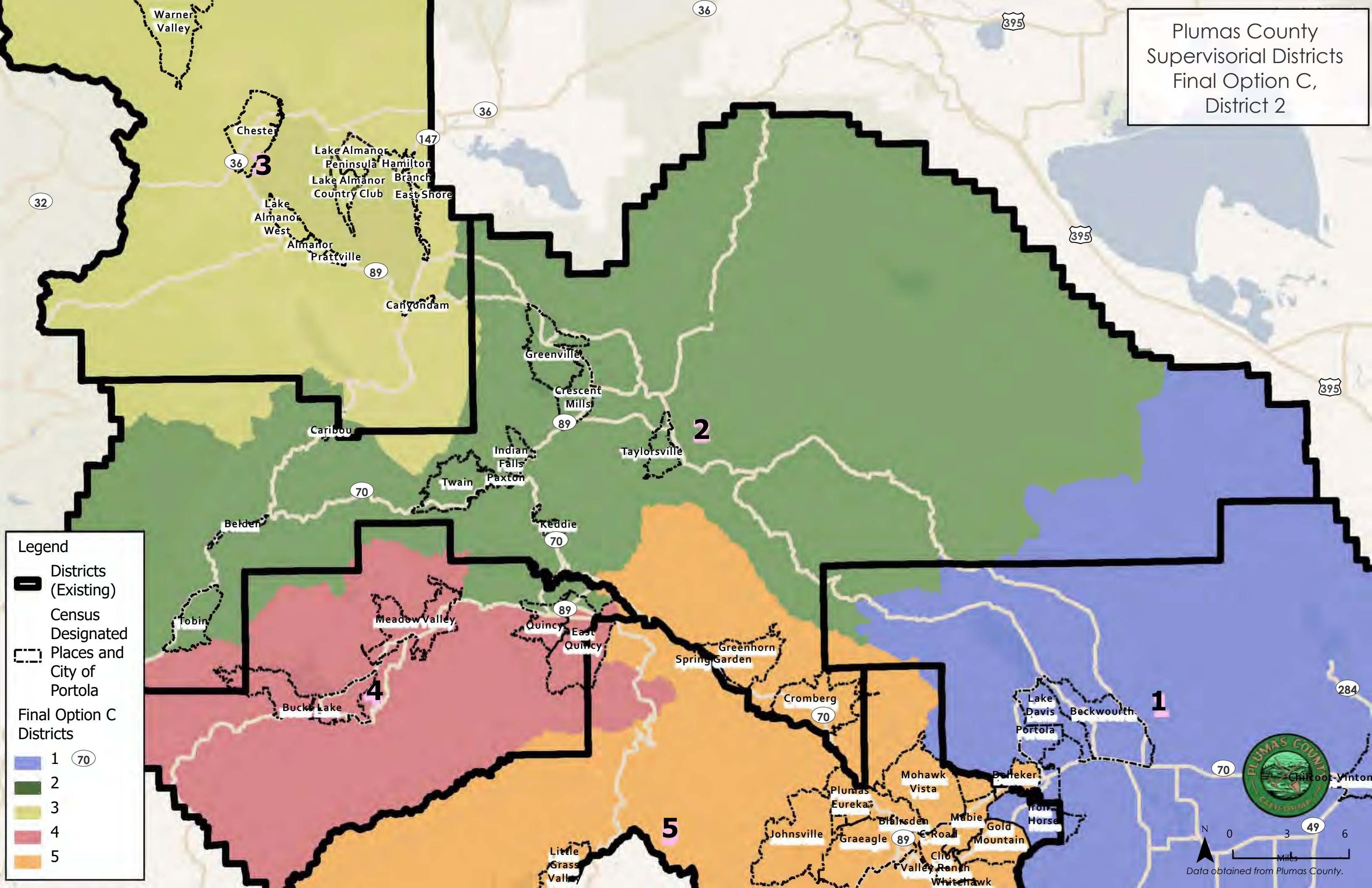
Plumas County  
Supervisory Districts  
Final Option C,  
District 1



- Legend
- Districts (Existing)
  - Census Designated Places and City of Portola
  - Final Option C Districts
- |   |   |   |   |   |
|---|---|---|---|---|
| 1 | 2 | 3 | 4 | 5 |
|---|---|---|---|---|



Plumas County  
Supervisory Districts  
Final Option C,  
District 2

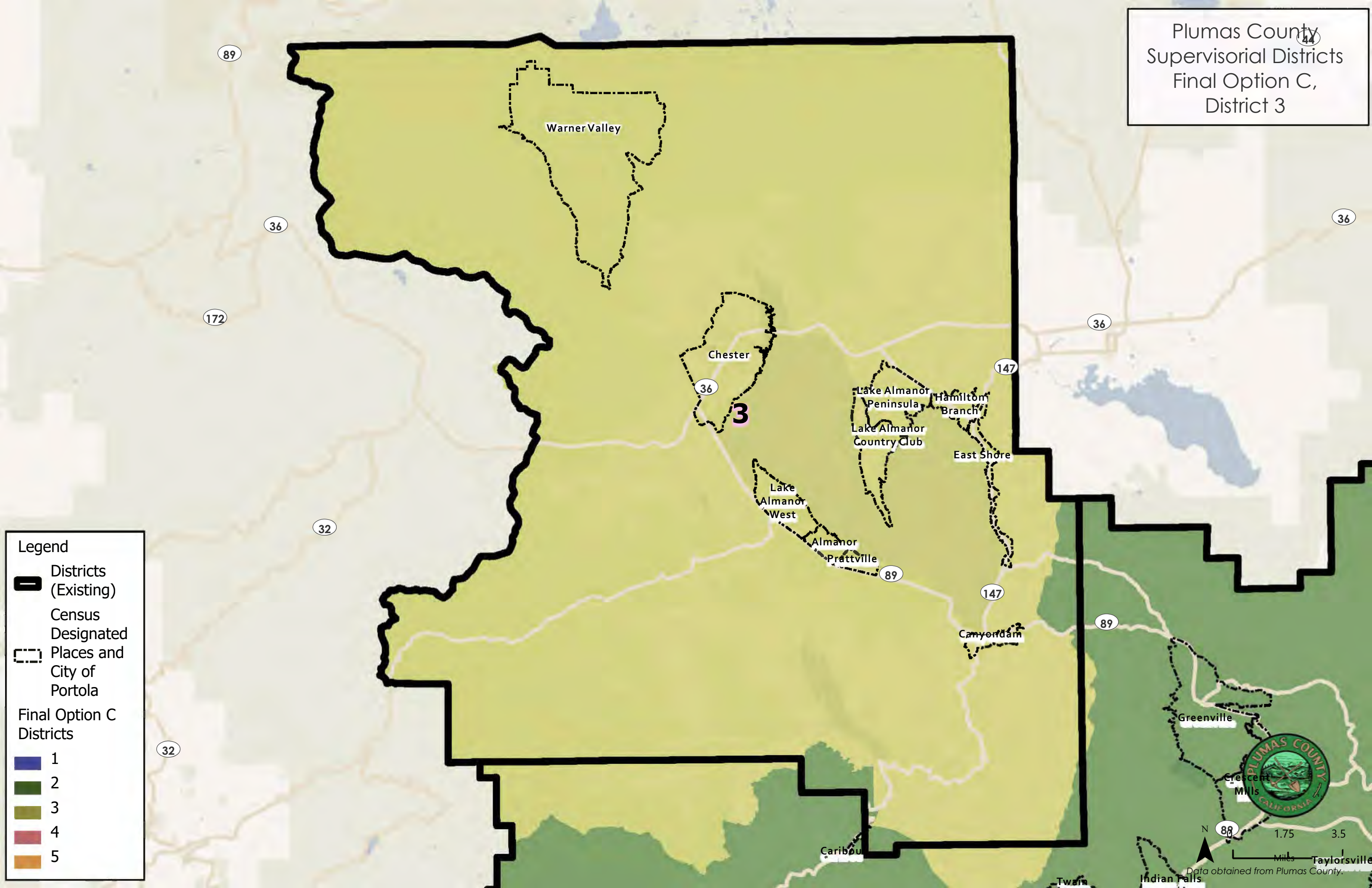


Legend

- Districts (Existing)
- Census Designated Places and City of Portola
- Final Option C Districts
- 1
- 2
- 3
- 4
- 5



Plumas County  
Supervisory Districts  
Final Option C,  
District 3

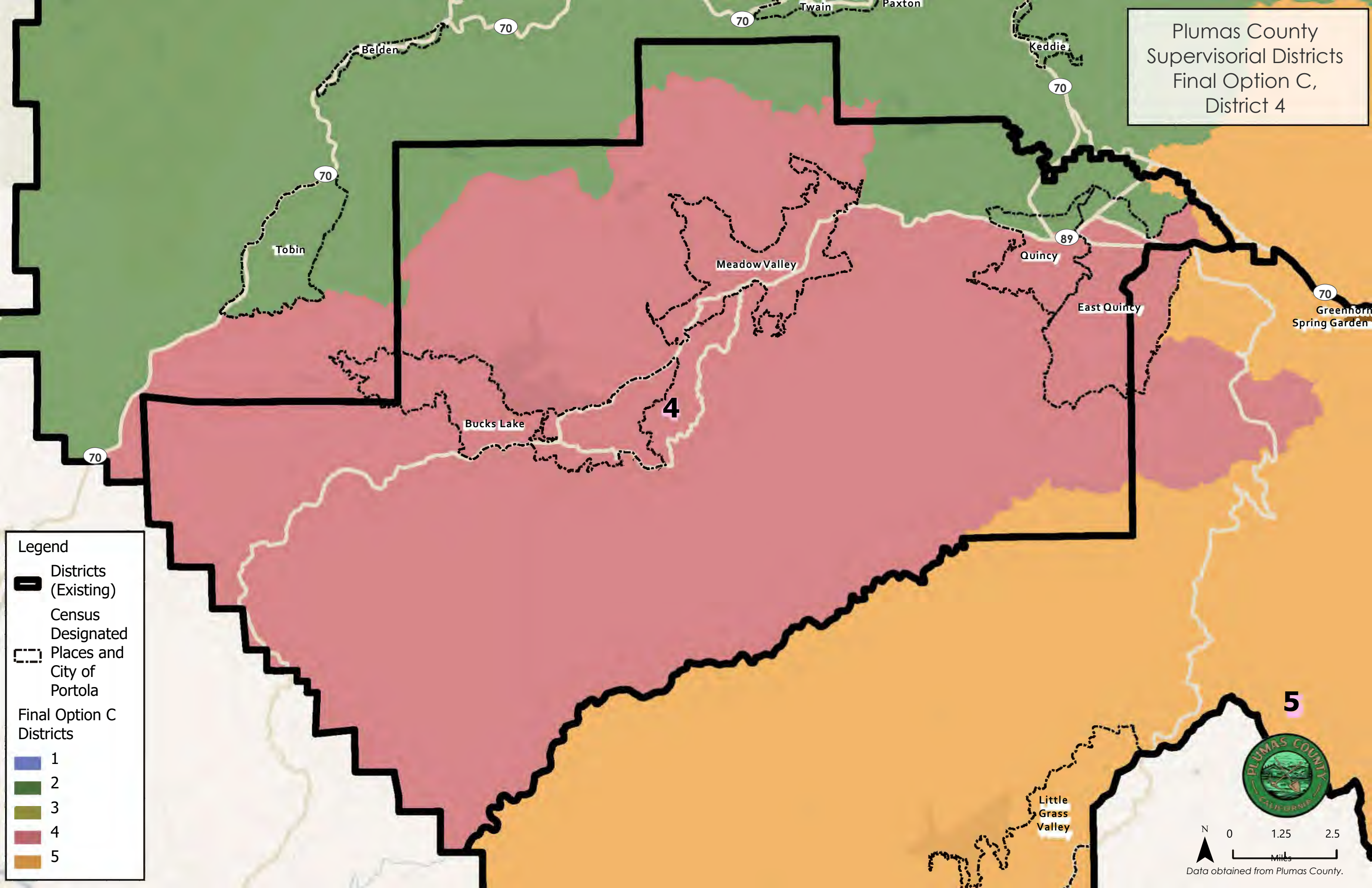


Legend

- Districts (Existing)
- Census Designated Places and City of Portola
- Final Option C Districts

1	2	3	4	5
---	---	---	---	---

Plumas County  
Supervisory Districts  
Final Option C,  
District 4



Legend

Districts  
(Existing)

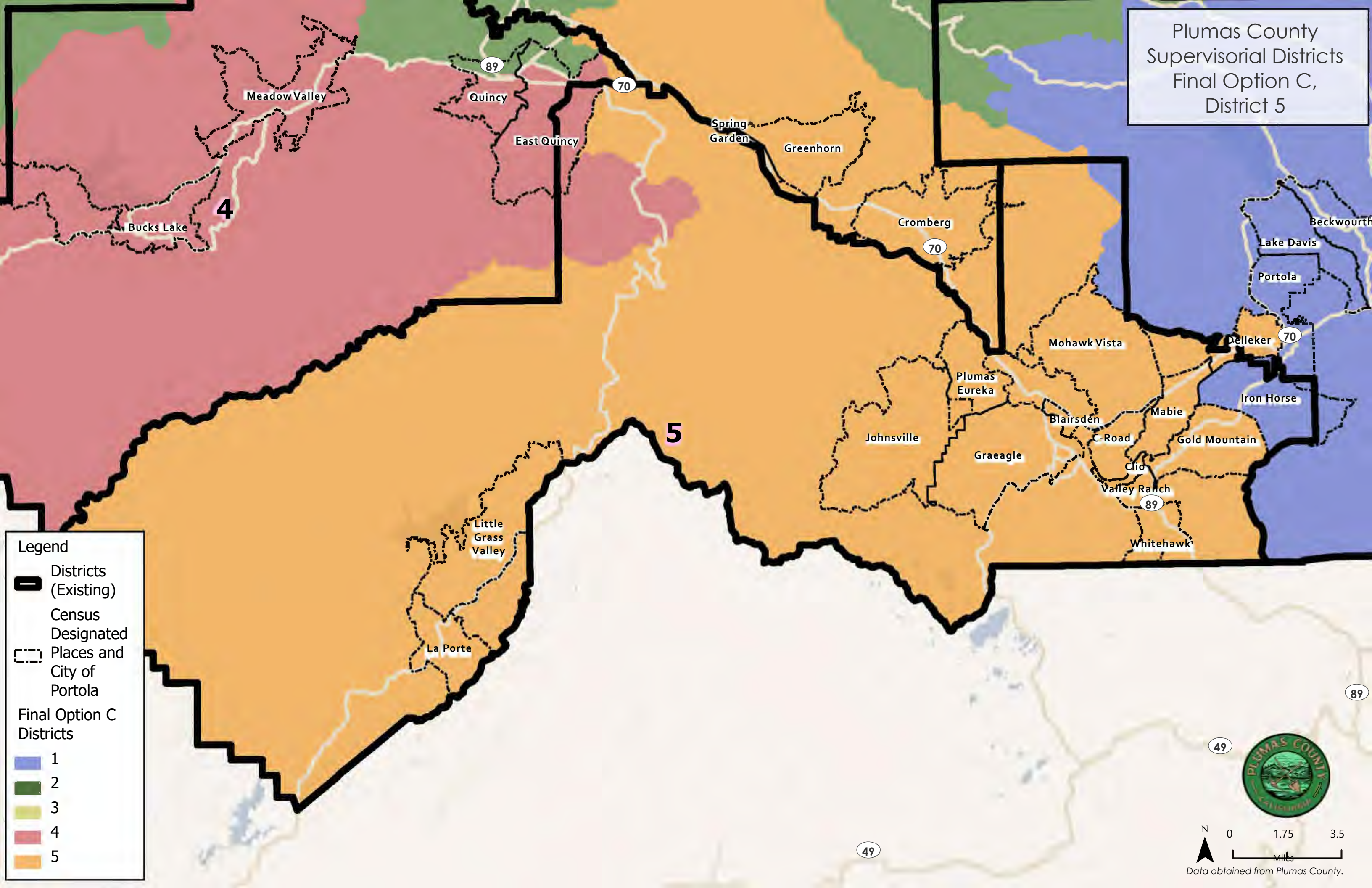
Census  
Designated  
Places and  
City of  
Portola

Final Option C  
Districts

- 1
- 2
- 3
- 4
- 5



Plumas County  
Supervisory Districts  
Final Option C,  
District 5



Legend

- Districts (Existing)
- Census Designated Places and City of Portola
- Final Option C Districts
- 1
- 2
- 3
- 4
- 5



N  
0 1.75 3.5  
Miles  
Data obtained from Plumas County.

# Plumas County Redistricting Summary Statistics

Final Option C

11/29/2021



## Ideal Population Criterion

Ideal Population	3,968	
Overall Range	4.0%	
< 5.0%	5.0 - 10.0%	> 10.0%

## Total Population & Deviation per District

District	Total Population	Over / Under Ideal	Deviation From Ideal
1	3,897	-71	-1.8%
2	3,941	-27	-0.7%
3	3,988	20	0.5%
4	4,057	89	2.2%
5	3,956	-12	-0.3%

## Total Population by Race/Ethnicity per District

District	White	Black or African American	American Indian or Alaska Native	Asian	Native Hawaiian and Pacific Islander	Some Other Race	Two or More Races	Hispanic/Latino
1	76.9%	0.4%	1.3%	0.7%	0.5%	0.2%	5.6%	14.4%
2	78.2%	0.3%	4.9%	0.5%	0.1%	0.7%	7.2%	8.1%
3	85.3%	0.2%	0.8%	1.0%	0.2%	0.4%	5.1%	7.1%
4	80.7%	1.4%	1.5%	0.9%	0.2%	0.8%	6.4%	8.2%
5	83.0%	0.3%	1.3%	0.6%	0.1%	0.8%	3.8%	10.3%

2020 Census P.L 94-171 Redistricting Data Summary Files Total Population by race and Hispanic/Latino origin.

## CVAP by Race/Ethnicity per District

District	White	Black or African American	American Indian or Alaska Native	Asian	Native Hawaiian and Pacific Islander	Two or More Races	Hispanic/Latino
1	85.2%	0.1%	3.4%	0.8%	1.6%	1.4%	7.4%
2	77.9%	0.0%	3.5%	4.0%	0.0%	10.3%	4.0%
3	90.0%	0.0%	0.1%	0.1%	0.0%	0.7%	8.7%
4	87.5%	3.1%	1.6%	0.1%	0.0%	1.7%	6.4%
5	90.6%	0.0%	0.2%	0.6%	0.0%	0.0%	6.7%

2015-2019 (5-year) American Community Survey (ACS) Citizen Voting-age Population (CVAP) by Race and Ethnicity Special Tabulation. Rounding may lead to summation of race/ethnicity percentages not equal to 100% (+/- 1%)

# Plumas County Redistricting Summary Statistics

Final Option C

11/29/2021



## Preservation of Geographic Integrity Criteria (i.e., minimize division of cities, communities of interest, etc.)

COI Category	Total # of COIs	# of COIs Preserved in Minimum Districts	% of COIs Preserved in Minimum Districts	COIs Not Preserved in Minimum # of Districts
Census Designated Places (CDP)	45	43	96%	East Quincy, Quincy
Precints	151	127	84%	10100, 11100, 11130, 12101, 14101, 20100, 22220, 22230, 23000, 23210, 34370, 35372, 42230, 42251, 43210, 43212, 43222, 43230, 43240, 43242, 51101, 51130, 52100, 52230
Subdivisions	125	125	100%	
Feather River College Trustee Areas	5	1*	20%	2, 3, 4, 5  *One trustee area is split between multiple districts, but preserved in the minimum number of districts based on the trustee area's total population (i.e., split between two districts rather than three-plus).

## Contiguity Criterion

Are all the districts contiguous? **Yes**

## Compactness Measures per District

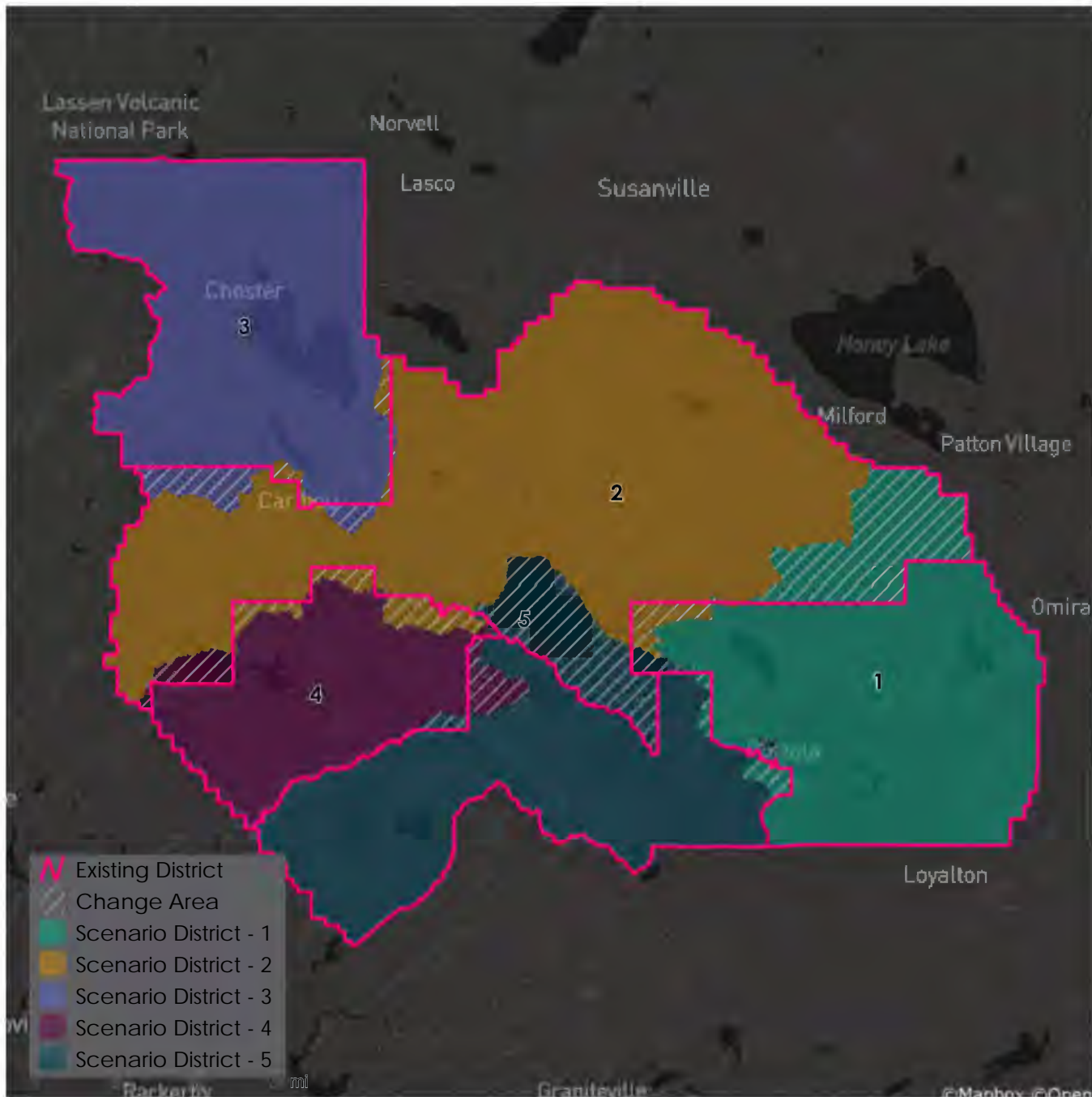
District	Polsby-Popper	Schwartzberg	Reock	Convex Hull	Length-Width
1	0.40	1.59	0.62	0.86	0.97
2	0.19	2.27	0.31	0.71	0.54
3	0.36	1.66	0.48	0.81	0.90
4	0.31	1.79	0.39	0.81	0.63
5	0.23	2.09	0.37	0.68	0.74

Polsby-Popper, Reock, Convex Hull, and Length-Width scores fall within the range of 0-1, with 0 being the least compact and 1 being the most compact. In comparison, a Schwartzberg score of 1 is the most compact and higher scores are increasingly less compact.

# Plumas County Redistricting Summary Statistics

Final Option C

11/29/2021



## Metadata

Run Time Stamp:	2021-11-29 16:06:37
Workflow Directory:	X:\F2066_Plumas_County\Projects\Alteryx\
District Scenario:	File: gdb:X:\F2066_Plumas_County\Data\Redist.gdb   FinalOptionC