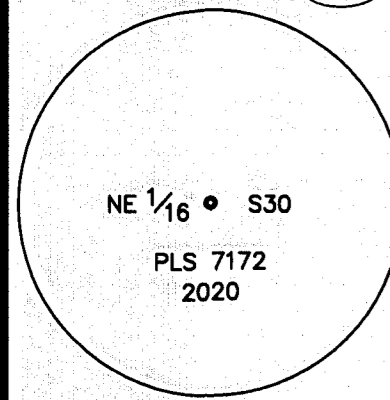


MONUMENT DESCRIPTIONS

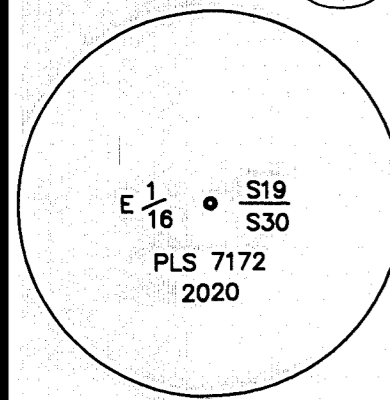
1902



FOUND 3/4" IRON PIPE, NO CAP, UP 0.20 FOOT IN A ROCK MOUND, NO REFERENCE. MONUMENT NOT HELD. ESTABLISHED NORTH 1/16 CORNER BY INTERSECTION. SET 2 1/4" "DIG IN" ALUMINUM PIPE WITH 3 1/4" ALUMINUM CAP, STAMPED AS SHOWN, UP 0.50 FOOT FROM THE GROUND AND PLACED A MAGNET BELOW THE PIPE. CORNER IS LOCATED ON A GENTLE EASTERLY FACING SLOPE IN DENSE FIR AND PINE, APPROXIMATELY 200 FEET EASTERLY OF A DIRT ROAD. BUILT A ROCK MOUND 2 FEET IN DIAMETER AND 6 INCHES HIGH, PAINTED THE ROCKS RED AND SET POST WITH FOREST SERVICE 54-2 BOUNDARY SIGN AND FOREST SERVICE 54-9 MONUMENT SIGN 1.5 FEET SOUTHWESTERLY OF MONUMENT. CLEARED SMALL TREES FROM AREA, LEFT FOUND 3/4" IRON PIPE AS IS, MONUMENT IS LOCATED N19°35'E 7.55 FEET FROM ESTABLISHED CORNER. ESTABLISHED TWO BEARING TREES, A 12 INCH WHITE FIR AND A 17 INCH WHITE FIR. ETCHED RING AND PAINTED RED ON BOTH. ON 12 INCH WHITE FIR, BLAZED AND SCRIBED "NE 1/16 S30 BT" ON 17 INCH WHITE FIR, BLAZED AND SCRIBED XBT. SET FOREST SERVICE 54-9 SURVEY MONUMENT SIGNS ON THE BACK OF TREES AND FOREST SERVICE 54-3 BEARING TREE SIGNS ON THE FRONT. SET MAG NAIL & WASHERS FOR BEARING AND DISTANCE:

1902BT SW	S68°55'W - 19.0'	12" WHITE FIR
1902BT SE	S52°37'E - 26.3'	17" WHITE FIR
1902RM NE	N20°10'50"E - 7.55'	3/4" IRON PIPE

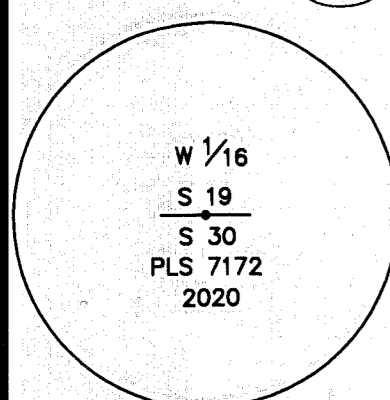
1903



FOUND 3/4" IRON PIPE, NO CAP, UP 1.0 FOOT FROM GROUND. NO REFERENCE. MONUMENT WAS 2.50 FEET WEST OF ESTABLISHED CORNER, NOT HELD. ESTABLISHED CORNER BY PRORATION, SET 2 1/4" "DIG IN" ALUMINUM PIPE WITH 3 1/4" ALUMINUM CAP, STAMPED AS SHOWN. BUILT 24 INCH WIDE BY 10 INCH HIGH ROCK MOUND AND PAINTED ROCKS RED. CLEARED A 6 FOOT RADIUS AROUND MONUMENT. SET POST FOREST SERVICE 54-2 BOUNDARY SIGN AND FOREST SERVICE 54-9 MONUMENT SIGN 2 FEET SOUTHWESTERLY OF MONUMENT. CORNER IS LOCATED ON A MODERATE SOUTHWESTERLY SLOPE, IN MODERATELY DENSE FOREST OF FIR AND PINE, INTERSPERSED WITH THICK BUSHES, APPROXIMATELY 580 FEET FROM DIRT ROAD. A 6 FOOT RADIUS WAS CLEARED AROUND NEW MONUMENT AND SET POST WITH FOREST SERVICE 54-2 BOUNDARY SIGN AND FOREST SERVICE 54-9 MONUMENT SIGN 2 FEET SOUTHWESTERLY OF MONUMENT. TWO BEARING TREES WERE ESTABLISHED, A 7 INCH WHITE FIR AND AN 11 INCH SUGAR PINE. BOTH TREES HAD RINGS AND BLAZES SCRAPPED AND PAINTED RED. BOTH BLAZES ARE SCRIBED "E 1/16 S30 BT". SET FOREST SERVICE 54-9 SURVEY MONUMENT SIGNS ON THE BACK OF TREES AND FOREST SERVICE 54-3 BEARING TREE SIGNS ON THE FRONT. SET MAG NAIL & WASHERS FOR BEARING AND DISTANCE:

1903BT SW1	S79°13'W - 10.5'	11" SUGAR PINE
1903BT SW2	S22°40'W = 10.0'	7" WHITE FIR

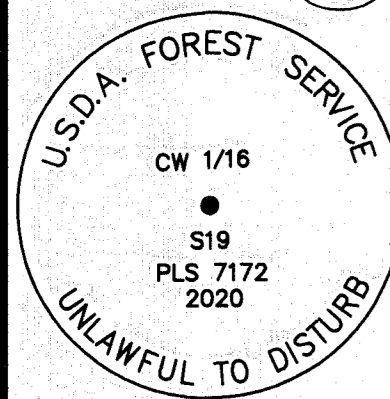
1904



FOUND 1 INCH OPEN PIPE, NO CAP, NO REFERENCE, MONUMENT WAS S55°04'W 0.86 FEET OF ESTABLISHED CORNER, NOT HELD. ESTABLISHED WEST 1/16 CORNER BY PRORATION. SET 2 1/4" ALUMINUM PIPE "DIG-IN" MONUMENT WITH 3 1/4" ALUMINUM CAP, STAMPED AS SHOWN. BUILT 24 INCH WIDE BY 10 INCH HIGH ROCK MOUND AND PAINTED ROCKS RED. CLEARED A 6 FOOT RADIUS AROUND MONUMENT. SET POST FOREST SERVICE 54-2 BOUNDARY SIGN AND FOREST SERVICE 54-9 MONUMENT SIGN 2 FEET SOUTHERLY OF MONUMENT. CORNER IS LOCATED ON STEEP SOUTHERLY SLOPE IN MODERATELY DENSE FOREST OF PINE AND FIR. CORNER IS APPROXIMATELY 225 FEET SOUTHERLY OF DIRT ROAD. TWO BEARING TREES WERE ESTABLISHED, BOTH 16 AND 20 INCH WHITE FIRS. SCRAPPED OFF BARK RING AND PAINTED RING RED. SET FOREST SERVICE 54-9 SURVEY MONUMENT SIGNS ON THE BACK OF TREES AND FOREST SERVICE 54-3 BEARING TREE SIGNS ON THE FRONT. BOTH BLAZES ARE SCRIBED "W 1/16 S30 BT". SET MAG NAIL & WASHERS FOR BEARING AND DISTANCE:

1904BT SE	S20°43'E - 32.5'	16" WHITE FIR
1904BT SW	S83°32'W - 24.9'	20" WHITE FIR

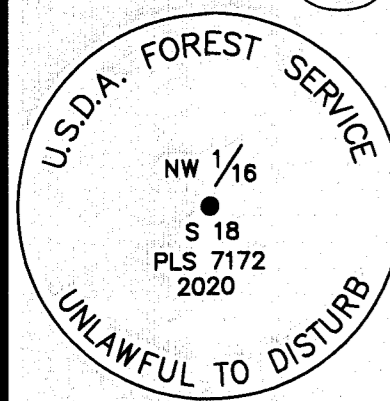
1905



FOUND 1 INCH OPEN PIPE, NO CAP, NO REFERENCE, MONUMENT WAS S81°09'E 0.48 FEET OF ESTABLISHED CORNER, NOT HELD. ESTABLISHED CENTER WEST 1/16 CORNER BY PRORATION. SET 2 1/4" ALUMINUM PIPE "DIG-IN" MONUMENT WITH 3 1/4" ALUMINUM CAP. BUILT 24 INCH WIDE BY 10 INCH HIGH ROCK MOUND AND PAINTED ROCKS RED. CLEARED A 6 FOOT RADIUS AROUND MONUMENT. SET POST FOREST SERVICE 54-2 BOUNDARY SIGN AND FOREST SERVICE 54-9 MONUMENT SIGN 2 FEET SOUTHWESTERLY OF MONUMENT. CORNER IS LOCATED AT THE WESTERLY EDGE OF A CLEARING IN FLAT, OPEN AREA, APPROXIMATELY 130 FEET SOUTHWESTERLY OF END OF DIRT ROAD. FOREST IS MODERATELY DENSE PINE, FIR AND CEDAR. TWO BEARING TREES WERE ESTABLISHED, A 14 INCH CEDAR AND 8 INCH SUGAR PINE. SCRAPPED OFF BARK RING AND PAINTED RED. PUT FOREST SERVICE 54-9 SURVEY MONUMENT SIGNS ON THE BACK OF TREES AND FOREST SERVICE 54-3 BEARING TREE SIGNS ON THE FRONT. BOTH BLAZES ARE SCRIBED "CW 1/16 S30 BT". SET MAG NAIL & WASHERS FOR BEARING AND DISTANCE:

1905BT NW	N49°49' - 2.4'W	14" CEDAR
1905BT SW	S26°26' - 31.4'	8" SUGAR PINE

1906



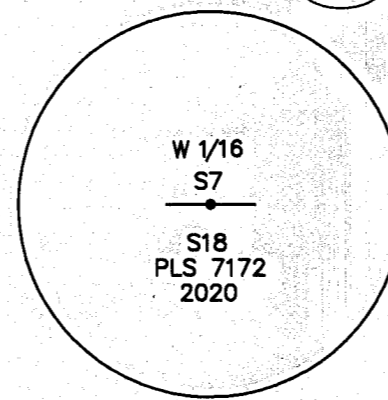
FOUND 1 INCH OPEN PIPE, NO CAP, NO REFERENCE, MONUMENT WAS S88°38'W 0.30 FEET OF ESTABLISHED CORNER, NOT HELD. ESTABLISHED BY PRORATION THE NW 1/16 CORNER OF SECTION 18, T26N, R9E, MOUNT DIABLO MERIDIAN. SET 2 1/4" ALUMINUM PIPE "DIG-IN" MONUMENT WITH 3 1/4" ALUMINUM CAP, STAMPED AS SHOWN. BUILT 24 INCH WIDE BY 10 INCH HIGH ROCK MOUND AND PAINTED ROCKS RED. CLEARED A 6 FOOT RADIUS AROUND MONUMENT. SET POST FOREST SERVICE 54-2 BOUNDARY SIGN AND FOREST SERVICE 54-9 MONUMENT SIGN 1.5 FEET NORTHWESTERLY OF MONUMENT. BURIED OLD MONUMENT UPSIDE DOWN WITH MAGNET IN HOLE NEXT TO MONUMENT. CORNER IS LOCATED IN SPARSE FOREST OF PINE AND FIR, APPROXIMATELY 30 FEET WESTERLY OF DIRT ROAD ON FLAT GROUND. TWO BEARING TREES WERE ESTABLISHED, BOTH 16 INCH JEFFREY PINES. SCRAPPED OFF BARK RING AND PAINTED RED. PUT FOREST SERVICE 54-9 SURVEY MONUMENT SIGNS ON THE BACK OF TREES AND FOREST SERVICE 54-3 BEARING TREE SIGNS ON THE FRONT. BOTH BLAZES ARE SCRIBED "XBT". SET MAG NAIL & WASHERS FOR BEARING AND DISTANCE:

1906BT NE	N28°04' - 45.4'	16" JEFFREY PINE
1906 BT NW	N87°28'W - 19.5'	16" JEFFREY PINE

SURVEYOR'S NOTE:
ALL BEARING TREE AND REFERENCE MONUMENTS SHOWN IN THESE MONUMENT DESCRIPTIONS ARE TRUE NORTH BEARINGS.
TO CONVERT TO GRID BEARINGS ROTATE TRUE BEARINGS CLOCKWISE 0°38'42".

MONUMENT DESCRIPTIONS

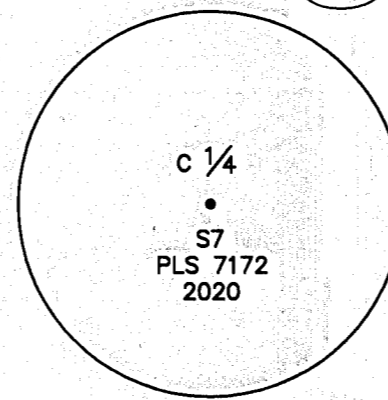
1907



FOUND 1 INCH OPEN PIPE WITH NO CAP, NO REFERENCE, MONUMENT LOCATED S72°59'E 0.49 FEET OF ESTABLISHED CORNER, NOT HELD. ESTABLISHED BY SINGLE PRORATION THE WEST 1/16 CORNER OF SECTION 7, TOWNSHIP 26 NORTH, RANGE 9 EAST, MOUNT DIABLO MERIDIAN. SET 2 1/4" ALUMINUM PIPE "DIG-IN" MONUMENT WITH 3 1/4" ALUMINUM CAP STAMPED AS SHOWN, BUILT 24 INCH WIDE BY 10 INCH HIGH ROCK MOUND AND PAINTED ROCKS RED. CLEARED A 6 FOOT RADIUS AROUND MONUMENT. SET POST FOREST SERVICE 54-2 BOUNDARY SIGN AND FOREST SERVICE 54-9 MONUMENT SIGN 1.5 FEET NORTHWESTERLY OF MONUMENT. BURIED OLD MONUMENT UPSIDE DOWN WITH MAGNET IN HOLE NEXT TO MONUMENT. CORNER IS LOCATED IN FLAT, HEAVILY FORESTED AREA OF FIR AND PINE, APPROXIMATELY 60 FEET EASTERLY OF A DIRT TRAIL AND APPROXIMATELY 400 FEET NORTHWESTERLY OF A DIRT ROAD. TWO BEARING TREES WERE ESTABLISHED, A 22 INCH JEFFREY PINE AND 24 INCH JEFFREY PINE. SCRAPPED OFF BARK RING AND PAINTED RED. PUT FOREST SERVICE 54-9 SURVEY MONUMENT SIGNS ON THE BACK OF TREES AND FOREST SERVICE 54-3 BEARING TREE SIGNS ON THE FRONT. SCRIBE IN NE BT1 READS "W 1/16 S7 BT", SCRIBE IN NE BT2 READS "XBT". SET MAG NAIL & WASHERS FOR BEARING AND DISTANCE:

1907BT NE1	N5°37'W - 5.7'	22" JEFFREY PINE
1907BT NE2	N86°17'W - 5.3'	24" JEFFREY PINE

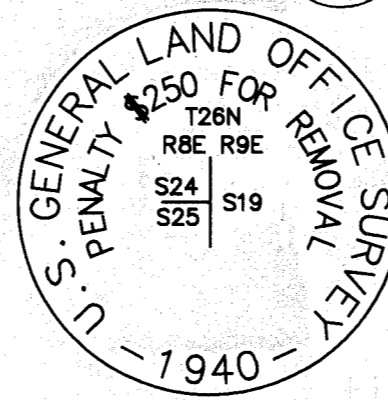
1908



FOUND 1 INCH OPEN PIPE, NO CAP, NO REFERENCE, MONUMENT WAS S78°10'E 0.40 FEET OF THE ESTABLISHED CORNER, NOT HELD. ESTABLISHED BY INTERSECTION THE CENTER 1/4 CORNER OF SECTION 7, TOWNSHIP 26 NORTH, RANGE 9 EAST, MOUNT DIABLO MERIDIAN. SET 2 1/4" ALUMINUM PIPE "DIG-IN" MONUMENT WITH 3 1/4" ALUMINUM CAP STAMPED AS SHOWN. BUILT 24 INCH WIDE BY 10 INCH HIGH ROCK MOUND AND PAINTED ROCKS RED. CLEARED A 6 FOOT RADIUS AROUND MONUMENT. SET POST FOREST SERVICE 54-2 BOUNDARY SIGN AND FOREST SERVICE 54-9 MONUMENT SIGN 1.5 FEET SOUTHWESTERLY OF MONUMENT. BURIED OLD MONUMENT UPSIDE DOWN WITH MAGNET IN HOLE NEXT TO MONUMENT. CORNER IS LOCATED IN FLAT AREA IN MODERATELY DENSE FOREST OF FIR AND PINE, APPROXIMATELY 420 FEET WESTERLY OF A DIRT ROAD AND APPROXIMATELY 300 FEET SOUTHEASTERLY OF THE EDGE OF A CLEARING. TWO BEARING TREES WERE ESTABLISHED, A 36 INCH DOUGLAS FIR AND AN 18 INCH DOUGLAS FIR. SCRAPPED OFF BARK RING AND PAINTED RED. PUT FOREST SERVICE 54-9 SURVEY MONUMENT SIGNS ON THE BACK OF TREES AND FOREST SERVICE 54-3 BEARING TREE SIGNS ON THE FRONT. SCRIBE IN 36 INCH DOUGLAS FIR READS "C 1/4 S7 BT", SCRIBE IN 18 INCH DOUGLAS FIR READ "XBT". SET MAG NAIL & WASHERS FOR BEARING AND DISTANCE:

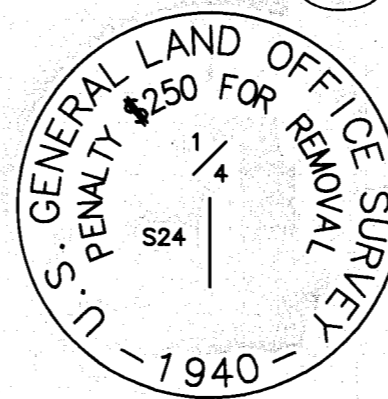
1907BT SW	S38°54'W - 18.6'	36" DOUGLAS FIR
1907BT SE	S52°32'E - 40.7'	18" DOUGLAS FIR

2000



FOUND 1 1/2" PIPE WITH 3" BRASS CAP, STAMPED AS SHOWN, UP 0.30 FOOT IN ROCK MOUND, PER THE ORIGINAL GLO SURVEY OF OF TOWNSHIP 26 NORTH, RANGE 8 EAST, MOUNT DIABLO MERIDIAN, ACCEPTED JANUARY 22, 1942. ACCEPTED AS THE COMMON CORNER OF SECTIONS 24 & 25 ON THE EAST LINE OF SAID RANGE 8 EAST.

2001



FOUND 2 1/4" IRON PIPE WITH 2 1/2" BRASS CAP, STAMPED AS SHOWN IN SMALL ROCK MOUND PER 7 RS 94. THE PIPE IS BENT OVER TO THE SOUTH. DUG DOWN AND LOCATED BASE OF PIPE, WHICH IS STILL SOLID. ACCEPTED AS EAST 1/4 CORNER OF SECTION 24, TOWNSHIP 26 NORTH, RANGE 8 EAST, MOUNT DIABLO MERIDIAN.

RECORD OF SURVEY

FOR

U.S.D.A. FOREST SERVICE

SECTIONS 7, 18, 19 AND 30, T.26 N., R.9 E., M.D.M.

PLUMAS COUNTY ~ CALIFORNIA

BY JOHNSON - FRANK & ASSOC., INC.

JUNE-JULY, 2020

SHEET 9 OF 9

16 RS 94