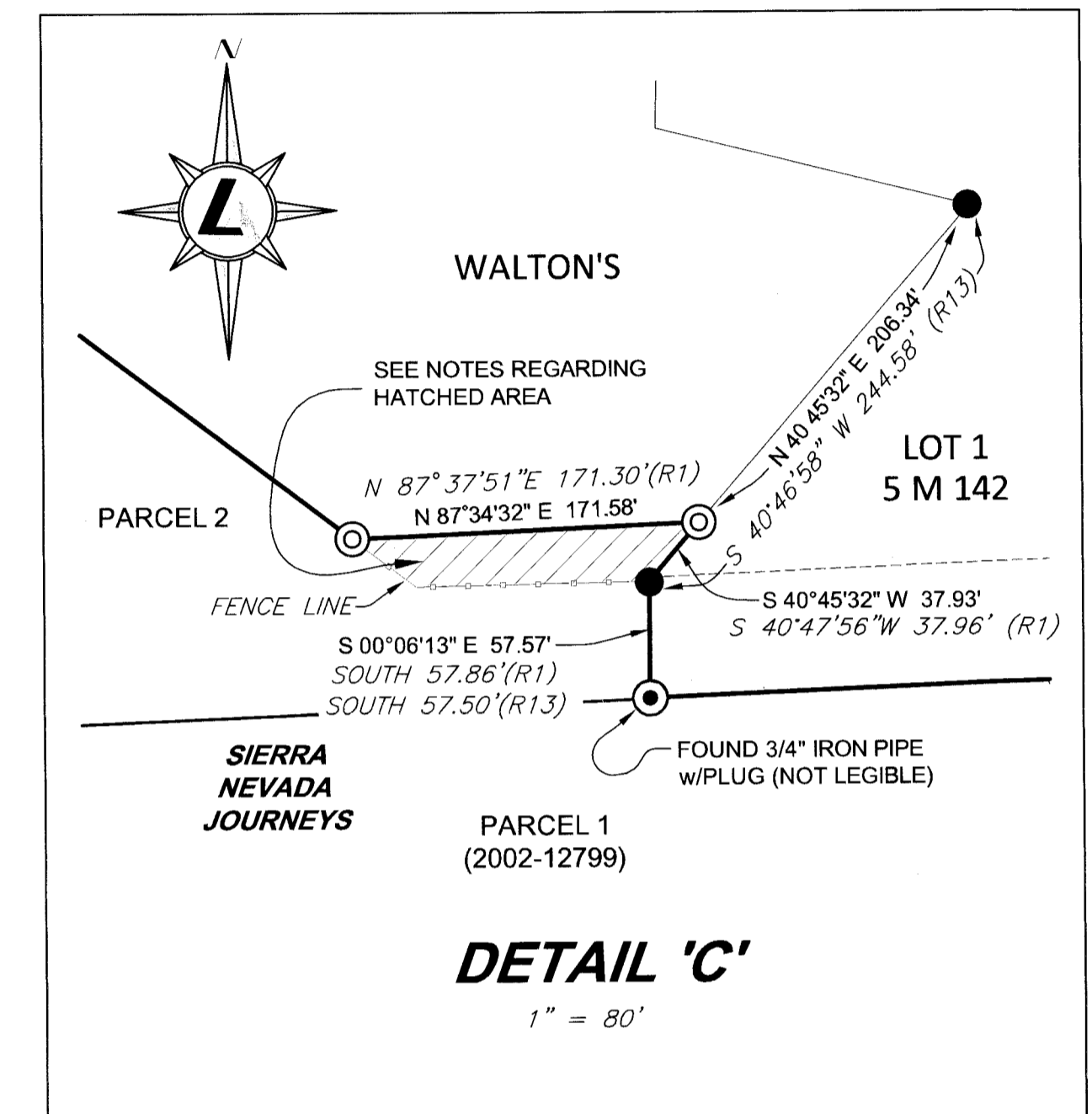
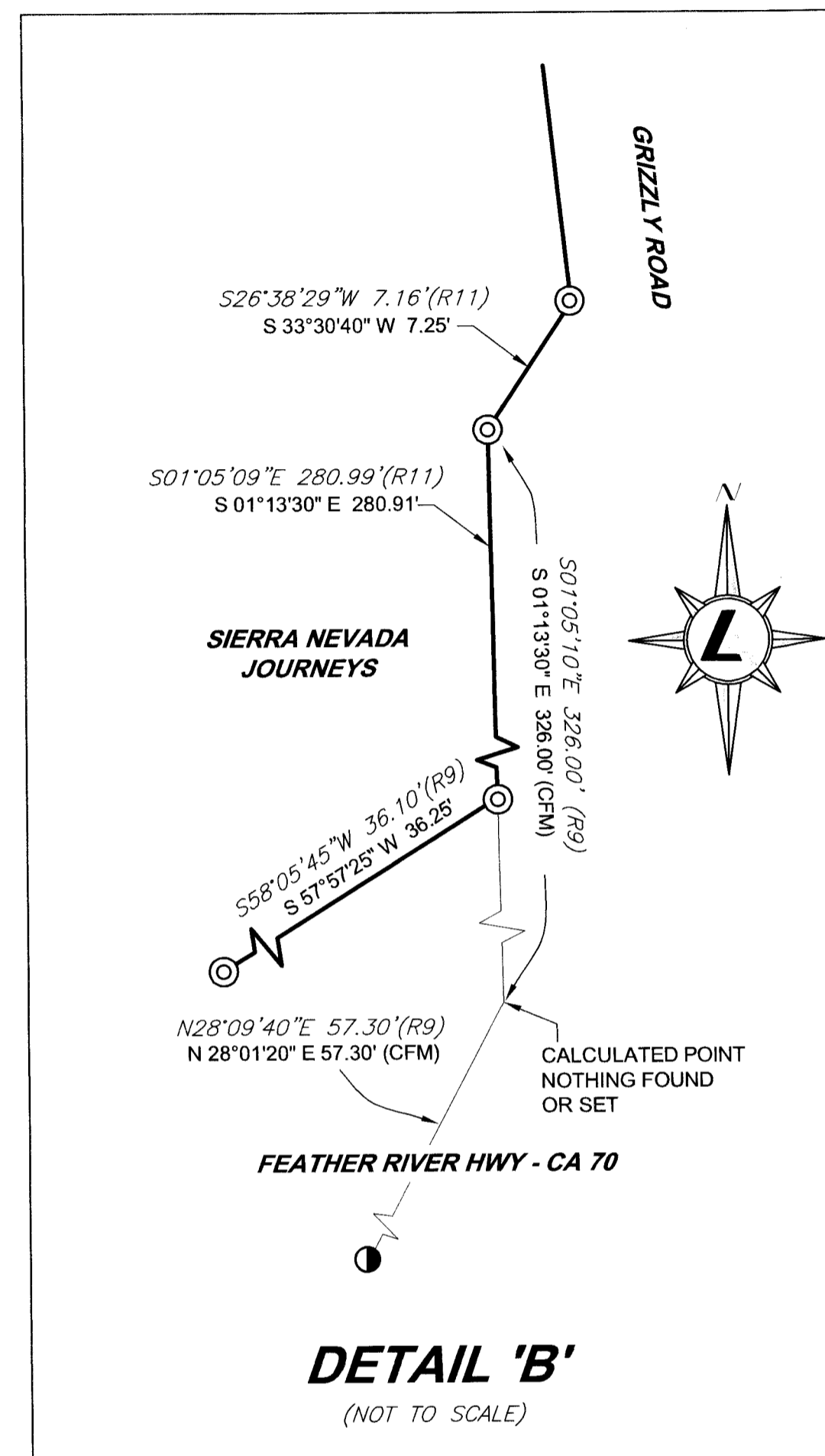
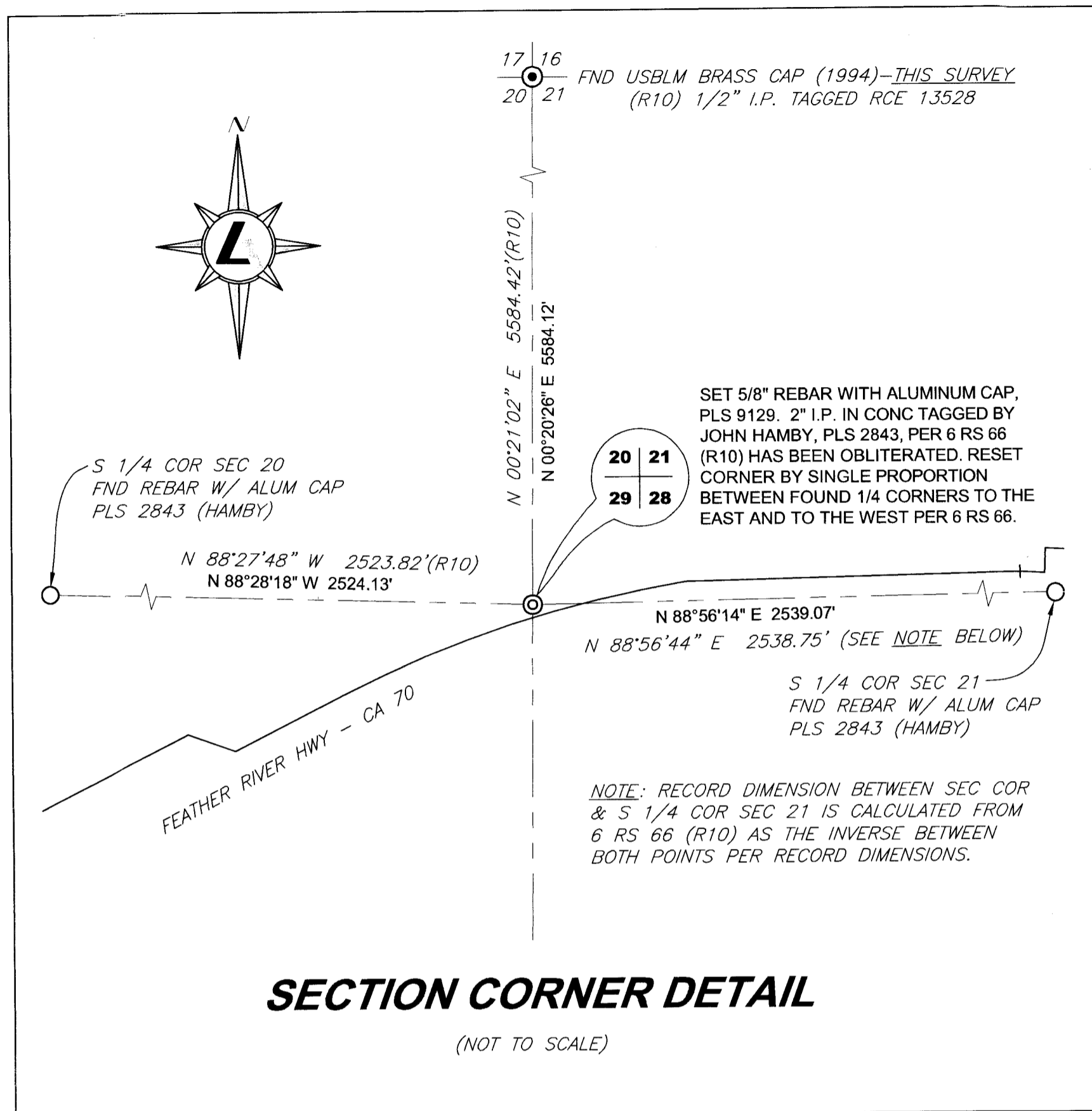


RECORD OF SURVEY

SIERRA NEVADA JOURNEYS CAMP PARCELS
IN SECTIONS 17, 20, 21, 28 & 29, T 23 N, R 14 E M.D.M.
PLUMAS COUNTY, CALIFORNIA

Sheet 5 of 5

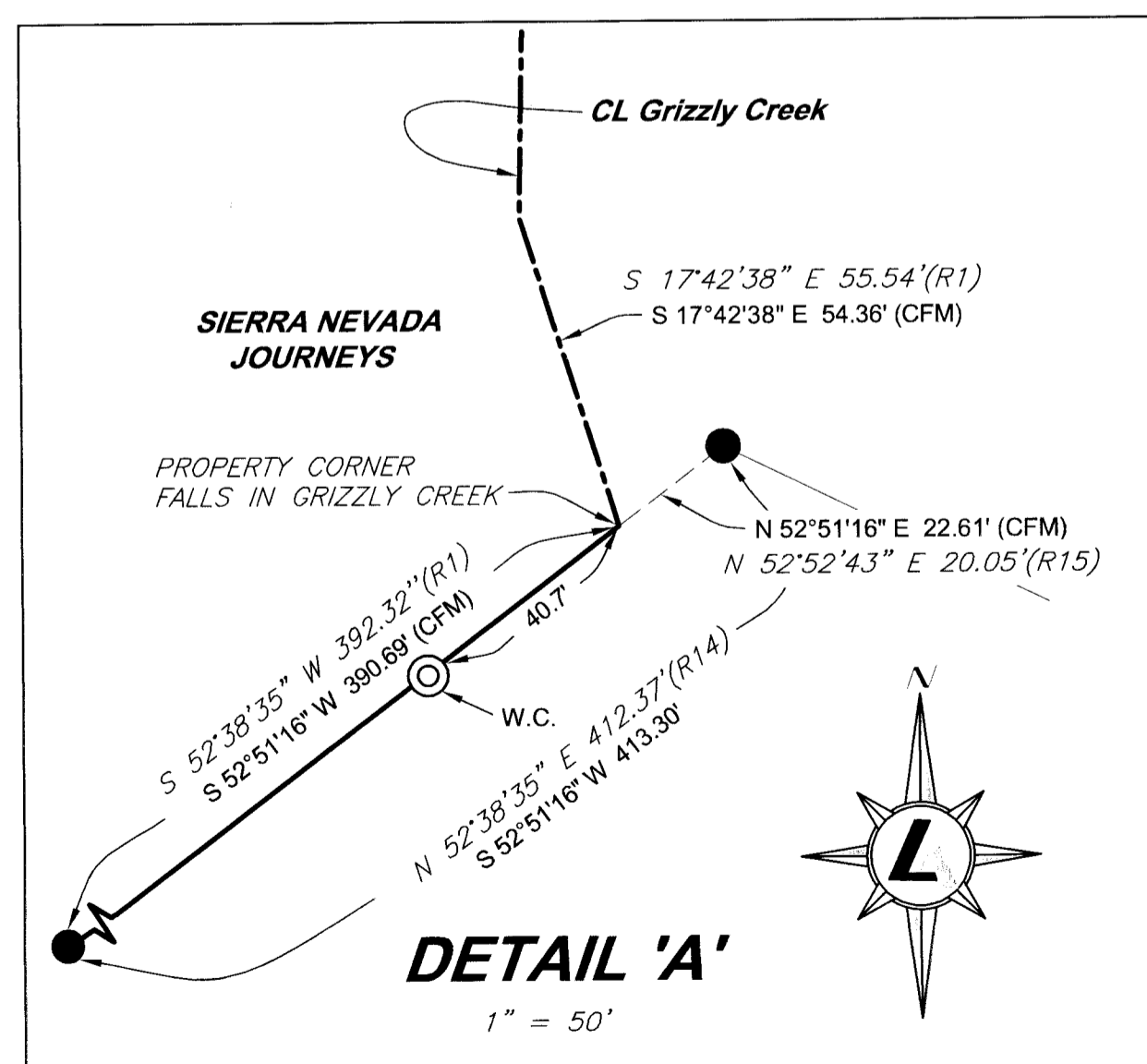


NOTES

- ALL DIMENSIONS ARE HORIZONTAL GROUND DISTANCES, AS MEASURED IN THE FIELD, UNLESS OTHERWISE INDICATED.
- THE HATCHED AREA IN DETAIL 'C' IS A PORTION OF PARCEL 2 OF THIS SURVEY, PER THE DESCRIPTION OF RESULTING PARCEL 1 AT DOCUMENT NO. 2005-7077, SPECIFICALLY IDENTIFIED AS PARCEL 1A-R OF RESOLUTION NO. 84-23, RECORDED IN BOOK 425, AT PAGE 254, OFFICIAL RECORDS OF PLUMAS COUNTY.

LEGEND

- FOUND REBAR W/ ALUMINUM CAP, PLS 2843 (HAMBY)
- ⊙ FOUND T-POST W/ TAG, PLS 5369 (GRIST), OR AS NOTED
- ⊙ FOUND SURVEY MONUMENT, AS NOTED
- ⊙ SET 5/8" REBAR W/ PLASTIC OR ALUMINUM CAP, PLS 9129
- (R1) RECORD COURSE AND DISTANCE PER REFERENCED DOCUMENT
- (CFM) CALCULATED FROM MEASURED DIMENSIONS
- P.O.B. POINT OF BEGINNING
- W.C. WITNESS CORNER



REFERENCE DOCUMENTS

- (R1) LOT LINE ADJUSTMENT, RECORDED JULY 12, 2005, AT DOCUMENT NO. 2005-0007077 OFFICIAL RECORDS OF PLUMAS COUNTY.
- (R2) - (R8) SEE SHEETS 3 OR 4
- (R9) R-W RECORD MAP, PLU-70, DATED FEBRUARY 1966, CALIFORNIA DIVISION OF HIGHWAYS.
- (R10) RECORD OF SURVEY, RECORDED AUGUST 30, 1982, IN BOOK 6 OF RECORD OF SURVEYS, AT PAGE 66, OFFICIAL RECORDS OF PLUMAS COUNTY.
- (R11) RECORD OF SURVEY, RECORDED OCTOBER 7, 1999, IN BOOK 11 OF RECORD OF SURVEYS, AT PAGE 84, OFFICIAL RECORDS OF PLUMAS COUNTY.
- (R12) RECORD OF SURVEY, RECORDED JANUARY 15, 2003, IN BOOK 12 OF RECORD OF SURVEYS, AT PAGE 100, OFFICIAL RECORDS OF PLUMAS COUNTY.
- (R13) RIVER VALLEY SUBDIVISION, UNIT 2, RECORDED OCTOBER 31, 1984, IN BOOK 5 OF SUBDIVISION/FINAL MAPS, AT PAGE 142, OFFICIAL RECORDS OF PLUMAS COUNTY.
- (R14) RECORD OF SURVEY, RECORDED JANUARY 28, 1986, IN BOOK 7 OF RECORD OF SURVEYS, AT PAGE 63, OFFICIAL RECORDS OF PLUMAS COUNTY.
- (R15) RECORD OF SURVEY, RECORDED DECEMBER 29, 1998, IN BOOK 11 OF RECORD OF SURVEYS, AT PAGE 53, OFFICIAL RECORDS OF PLUMAS COUNTY.

LUMOS
& ASSOCIATES

225 KINGSBURY GRADE, SUITE A
PO BOX 3570, STATELINE, NV 89449
TEL (775) 588-6490
LUMOSINC.COM

16 RS 84