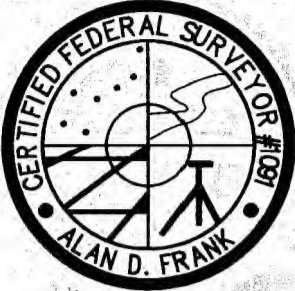


SURVEYOR'S STATEMENT:

THIS MAP CORRECTLY REPRESENTS A SURVEY MADE BY ME OR UNDER MY DIRECTION IN CONFORMANCE WITH THE REQUIREMENTS OF THE PROFESSIONAL LAND SURVEYOR'S ACT AT THE REQUEST OF THE U.S.D.A. FOREST SERVICE IN MAY – SEPTEMBER, 2018.

ALAN D. FRANK, PLS 7172 CFEDS 1091 SEPTEMBER 13, 2021 DATE



BASIS OF BEARINGS:

THE BASIS OF BEARINGS FOR THIS RECORD OF SURVEY IS THE CALIFORNIA COORDINATE SYSTEM, NAD83 (CCS83) [2010.00 EPOCH], STATE PLANE GRID ZONE 1, AS DERIVED FROM THE CONTINUOUSLY OPERATING REFERENCE STATIONS (CORS) QUIN (PID AF9564) AND P671 (PID DN5671).

THIS BASIS OF BEARINGS IS SHOWN LOCALLY HEREON BY THE QUARTER LINE OF THE SECTION 30, T26N, R9E, BETWEEN STATIONS 1171 AND 1175, SAID LINE HAVING A GRID BEARING OF N89°09'46"W.

CONVERGENCE: GEODETIC AZIMUTH = GRID AZIMUTH + 0°38'42", CALCULATED AT POINT 1143.

ALL BEARINGS SHOWN HEREON ARE GRID BEARINGS WITH THE EXCEPTION OF RECORD BEARINGS, WHICH ARE AS SHOWN IN THE PARTICULAR RECORD MAP OR IF NOTED OTHERWISE.

BASIS OF COORDINATES:

THE BASIS OF BEARINGS FOR THIS RECORD OF SURVEY IS THE CALIFORNIA COORDINATE SYSTEM, NAD83 (CCS83) [2010.00 EPOCH], STATE PLANE GRID ZONE 1, AS DERIVED FROM THE CONTINUOUSLY OPERATING REFERENCE STATIONS (CORS) QUIN (PID AF9564) AND P671 (PID DN5671).

NO CPCR SECTION 8813.2 ACCURACY IS CLAIMED FOR THE COORDINATE POSITIONS DERIVED IN THIS SURVEY. HOWEVER, ALL FOUND MONUMENTS WERE TIED DIRECTLY TO THE TWO CONTROLLING CGPS STATIONS AS WELL AS TO AT LEAST TWO ONSITE CONTROL STATIONS USING DUAL FREQUENCY STATIC, POST-PROCESSED GPS, RESULTING IN A LOCAL NETWORK 95 % CONFIDENCE OF ±0.25 FOOT (±7.5 CM) FOR THOSE STATIONS. THIS NETWORK ACCURACY EXCEEDS THAT SPECIFIED IN THE U.S. FOREST SERVICE'S "STANDARDS AND GUIDELINES FOR CADASTRAL SURVEYS USING GLOBAL POSITIONING SYSTEM METHODS", WHICH REQUIRES A LOCAL ACCURACY 95% CONFIDENCE ON CADASTRAL MEASUREMENTS OF LESS THAN ±0.33 FOOT (±10 CM).

SCALE FACTOR:

MEASURED DISTANCES SHOWN HEREON ARE STATE PLANE GRID DISTANCES, SHOWN IN U.S. SURVEY FEET. TO OBTAIN GROUND DISTANCES DIVIDE THE GRID DISTANCES BY A COMBINED FACTOR (CF) OF 0.99972. THIS CF WAS COMPUTED AT THE QUARTER CORNER COMMON TO SECTIONS 18 AND 19, STATION 1143, WITH AN ELEVATION OF 5,349 FEET.

GROUND DISTANCE = GRID DISTANCE / 0.99972

PURPOSE OF SURVEY:

THE PURPOSE OF THIS SURVEY IS TO LOCATE, MONUMENT, MARK, AND POST THE NATIONAL FOREST PROPERTY BOUNDARY. SAID PROPERTY BOUNDARY LINES HAVE BEEN INTERVISIBLY POSTED AT A MAXIMUM INTERVAL DISTANCE OF 200 FEET.

THIS MAP IS BEING FILED PURSUANT TO THE PROFESSIONAL LAND SURVEYOR'S ACT, CHAPTER 15, ARTICLE 5, SECTION 8762, PARAGRAPH (A), OF THE BUSINESS AND PROFESSIONS CODE.

REFERENCE DOCUMENTS:

- R1 REFERS TO MAP OF THE TOWNSHIP 26 NORTH, RANGE 9 EAST OF THE MOUNT DIABLO MERIDIAN BY THE GENERAL LAND OFFICE, APPROVED NOVEMBER 30, 1870.
- R2 REFERS TO MAP OF THE TOWNSHIP 26 NORTH, RANGE 8 EAST OF THE MOUNT DIABLO MERIDIAN BY THE GENERAL LAND OFFICE, ACCEPTED JANUARY 22, 1942.
- R3 REFERS TO A RECORD OF SURVEY FILED 7 RS 94, RECORDS OF PLUMAS COUNTY.
- R4 REFERS TO RECORDS OF SURVEY FILED 12 RS 53 AND 12 RS 54, RECORDS OF PLUMAS COUNTY.
- R5 REFERS TO USDA-FOREST SERVICE CORNER RECORD CARD N-5, YEAR 1972.

COUNTY SURVEYOR'S STATEMENT:

THIS MAP HAS BEEN EXAMINED IN ACCORDANCE WITH SECTION 8766 OF THE PROFESSIONAL LAND SURVEYOR'S ACT THIS 18th DAY OF September, 2021.

R. TOM HUNTER, R.C.E. 30515 PLUMAS COUNTY SURVEYOR



RECORDER'S STATEMENT:

FILED THIS 20th DAY OF September, 2021 AT 2:56pm IN BOOK 16 OF RECORD OF SURVEYS AT PAGE 86, AT THE REQUEST OF THE COUNTY SURVEYOR.

MARCY DeMARTILE COUNTY CLERK – RECORDER

BY: Kari Casella, Deputy DEPUTY

POSITIONAL DATA TABLE:

STATION	LATITUDE	LONGITUDE	(U.S. SURVEY FEET)		STATION
			NORTHING	EASTING	
1101	40-08-01.83509	21-01-23.33112	1933565.29	6834795.38	1101
1103	40-08-01.54048	121-00-49.70439	1933564.74	6837407.29	1103
1111	40-07-35.62950	121-01-23.63411	1930913.46	6834801.41	1111
1115	40-07-35.03726	121-00-15.79380	1930912.84	6840071.38	1115
1121	40-07-09.39917	121-01-23.43947	1928259.55	6834846.12	1121
1123	40-07-09.06839	121-00-49.71293	1928255.43	6837466.39	1123
1126	40-06-56.34541	121-01-23.25724	1926938.88	6834875.00	1126
1131	40-06-43.28528	121-01-23.08149	1925617.56	6834903.39	1131
1135	40-06-42.04515	121-00-15.75984	1925550.95	6840134.95	1135
1141	40-06-17.19421	121-01-22.86744	1922977.76	6834949.45	1141
1143	40-06-16.27219	121-00-49.35332	1922913.64	6837554.46	1143
1145	40-06-15.65992	121-00-15.80952	1922881.16	6840161.42	1145
1151	40-05-51.04671	121-01-22.37994	1920332.48	6835016.83	1151
1155	40-05-49.77200	121-00-15.61501	1920261.90	6840206.30	1155
1161	40-05-24.87388	121-01-22.00368	1917684.54	6835075.61	1161
1163	40-05-24.18897	121-00-48.94595	1917644.03	6837645.43	1163
1165	40-05-23.54790	121-00-15.66745	1917608.41	6840232.38	1165
1171	40-04-59.11356	121-01-21.79572	1915078.20	6835120.84	1171
1175	40-04-57.79380	121-00-15.39356	1915002.77	6840283.28	1175
1183	40-04-32.67204	121-00-48.13432	1912432.07	6837767.21	1183
2000	40-05-25.18455	121-01-22.00708	1917715.97	6835074.99	2000
2001	40-05-50.90824	121-01-22.37808	1920318.47	6835017.13	2001
SET MONUMENTS					
1901	40-05-10.67065	121-00-15.53154	1916305.57	6840257.75	1901
1902	40-05-10.99626	121-00-32.13654	1916323.88	6838966.86	1902
1903	40-05-23.86915	121-00-32.30625	1917626.26	6838938.94	1903
1904	40-05-24.53373	121-01-05.57420	1917664.41	6836352.73	1904
1905	40-05-50.73275	121-01-05.84494	1920315.07	6836302.05	1905
1906	40-06-56.10965	121-01-06.53764	1926929.44	6836174.26	1906
1907	40-07-09.23517	121-01-06.68224	1928257.50	6836148.01	1907
1908	40-07-35.33474	121-00-49.70866	1930913.15	6837436.81	1908
PROJECT CONTROL					
P671	40-24-32.89394	121-25-41.49505	2032847.25	6720892.09	P671
QUIN	39-58-28.38078	120-56-39.88941	1875796.83	6857507.43	QUIN

POSITIONS SHOWN ABOVE ARE NORTH AMERICAN DATUM OF 1983 (NAD83) 2010.00 EPOCH,

AS DERIVED FROM THE NATIONAL GEODETIC SURVEY'S PUBLISHED POSITIONS FOR THE CONTINUOUSLY OPERATING REFERENCE STATIONS (CORS) LISTED ABOVE.

COORDINATES SHOWN ABOVE ARE CALIFORNIA STATE PLANE, ZONE I.

ALL UNITS ARE U.S. SURVEY FEET.

////// INDICATES U.S.D.A. FOREST SERVICE BOUNDARY LINE.

RECORD OF SURVEY

FOR

U.S.D.A. FOREST SERVICE

SECTIONS 7, 18, 19 AND 30, T.26 N., R.9 E., M.D.M.

PLUMAS COUNTY ~ CALIFORNIA

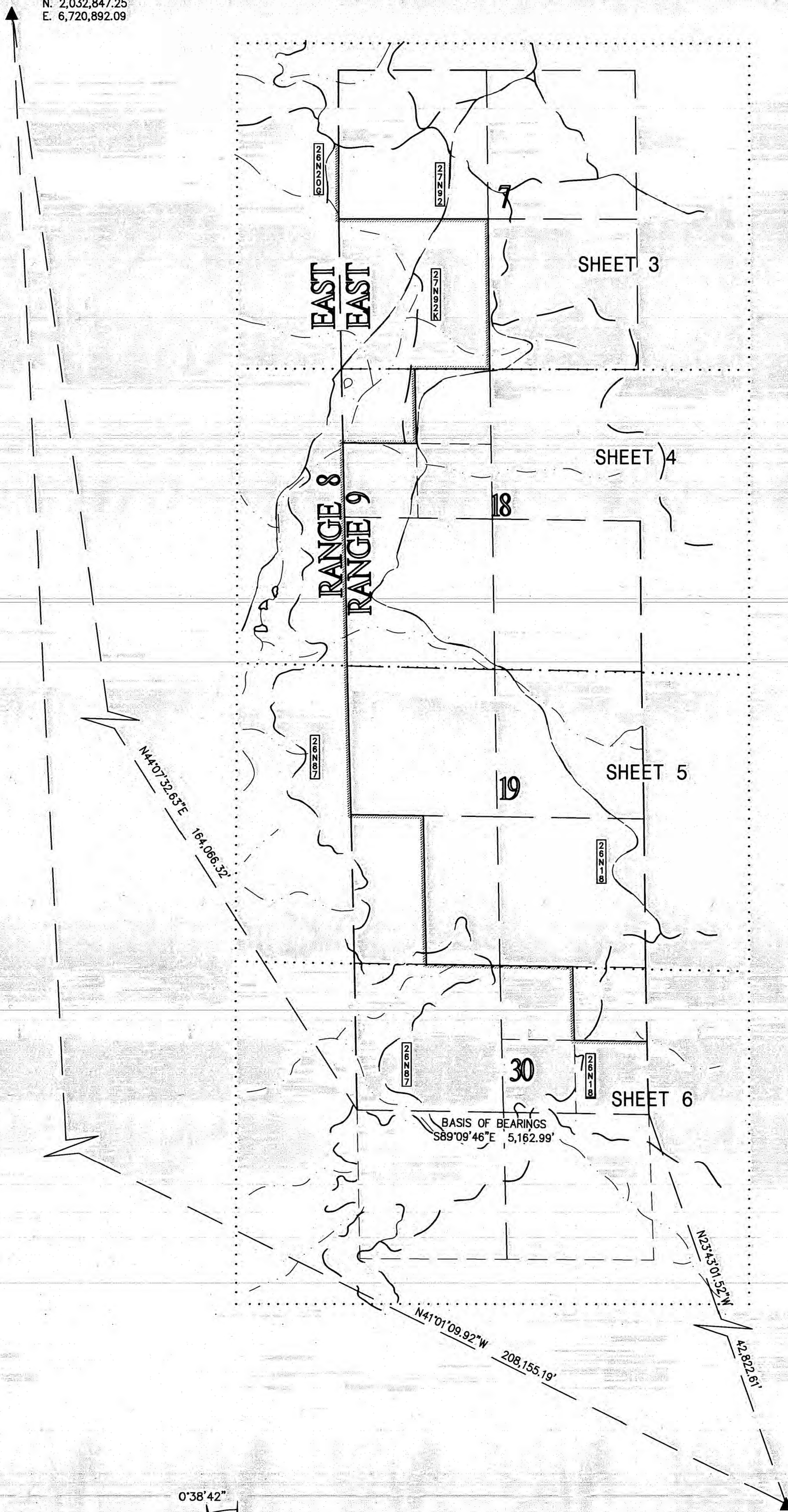
BY JOHNSON – FRANK & ASSOC., INC.

JUNE-JULY, 2020

SHEET 1 OF 9

16 RS 86

CORS: P671
N. 2,032,847.25
E. 6,720,892.09



CORS: QUIN
N. 1,875,803.77
E. 6,857,500.98

FOR
U.S.D.A. FOREST SERVICE
SECTIONS 7, 18, 19 AND 30, T.26 N., R.9 E., M.D.M.
PLUMAS COUNTY ~ CALIFORNIA
SON - FRANK & ASSOC., INC. JUNE-JULY, 2020

SHEET 2 OF 9

0°38'42"

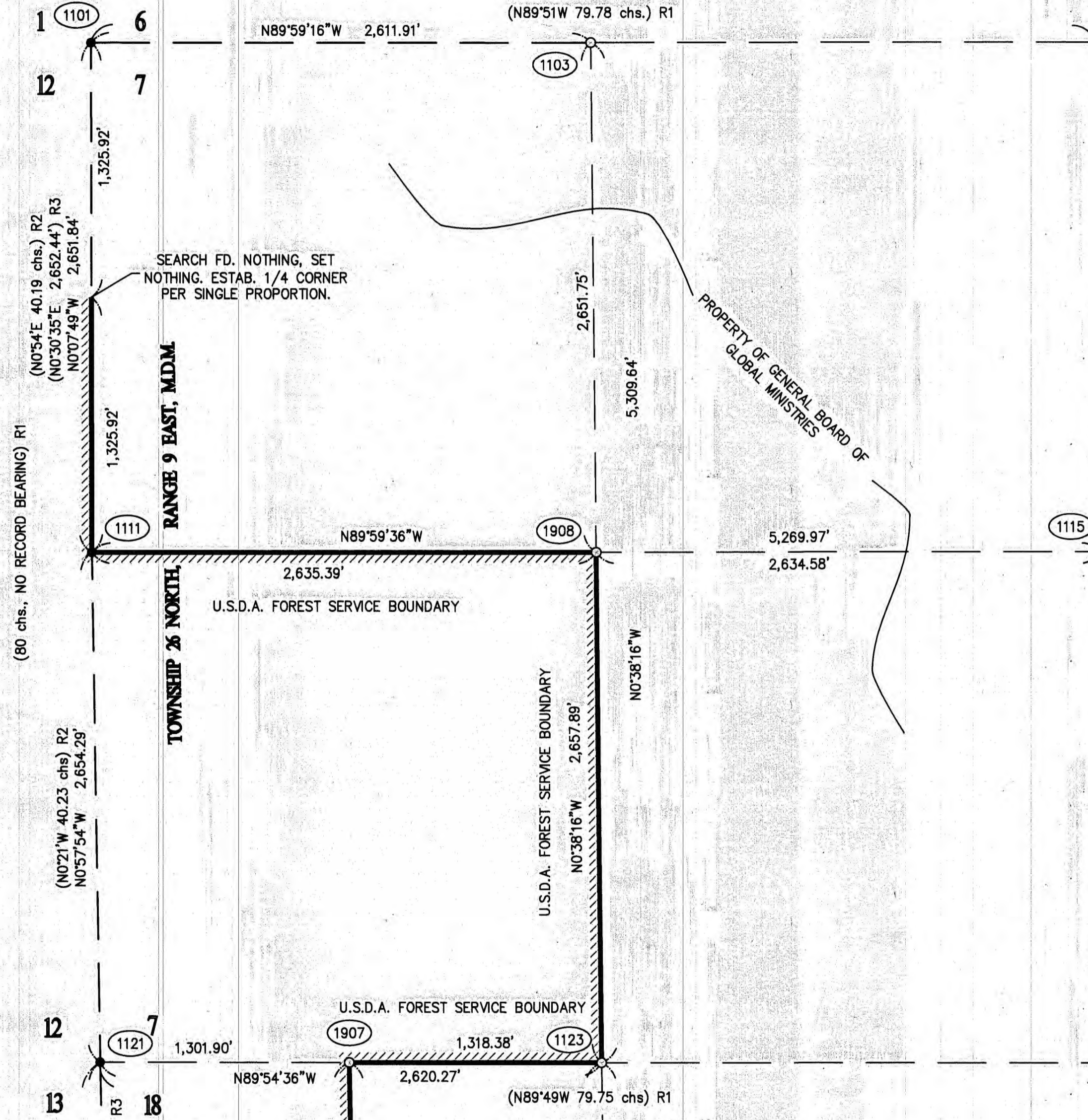
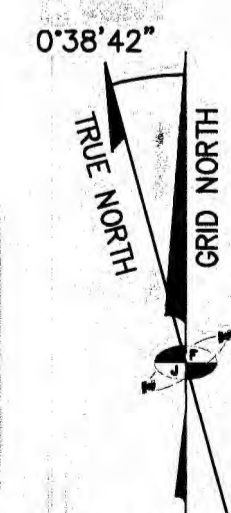
TRUE NORTH

GRID NORTH

M

G

NO SCALE



SEE SHEET 4

MONUMENT NOTES:

- () RECORD INFORMATION PER REFERENCED NUMBER.
- FOUND MONUMENT AS NOTED.
- SET MONUMENT AS NOTED.
- #### INDICATES MONUMENT NO. DESCRIBED IN MONUMENT DESCRIPTIONS SHEETS 7 THROUGH 9.

RECORD OF SURVEY

FOR

U.S.D.A. FOREST SERVICE

SECTIONS 7, 18, 19 AND 30, T.26 N., R.9 E., M.D.M.

PLUMAS COUNTY
BY JOHNSON - FRANK & ASSOC., INC.

CALIFORNIA

JUNE-JULY, 2020

SHEET 3 OF 9

16 RS EE



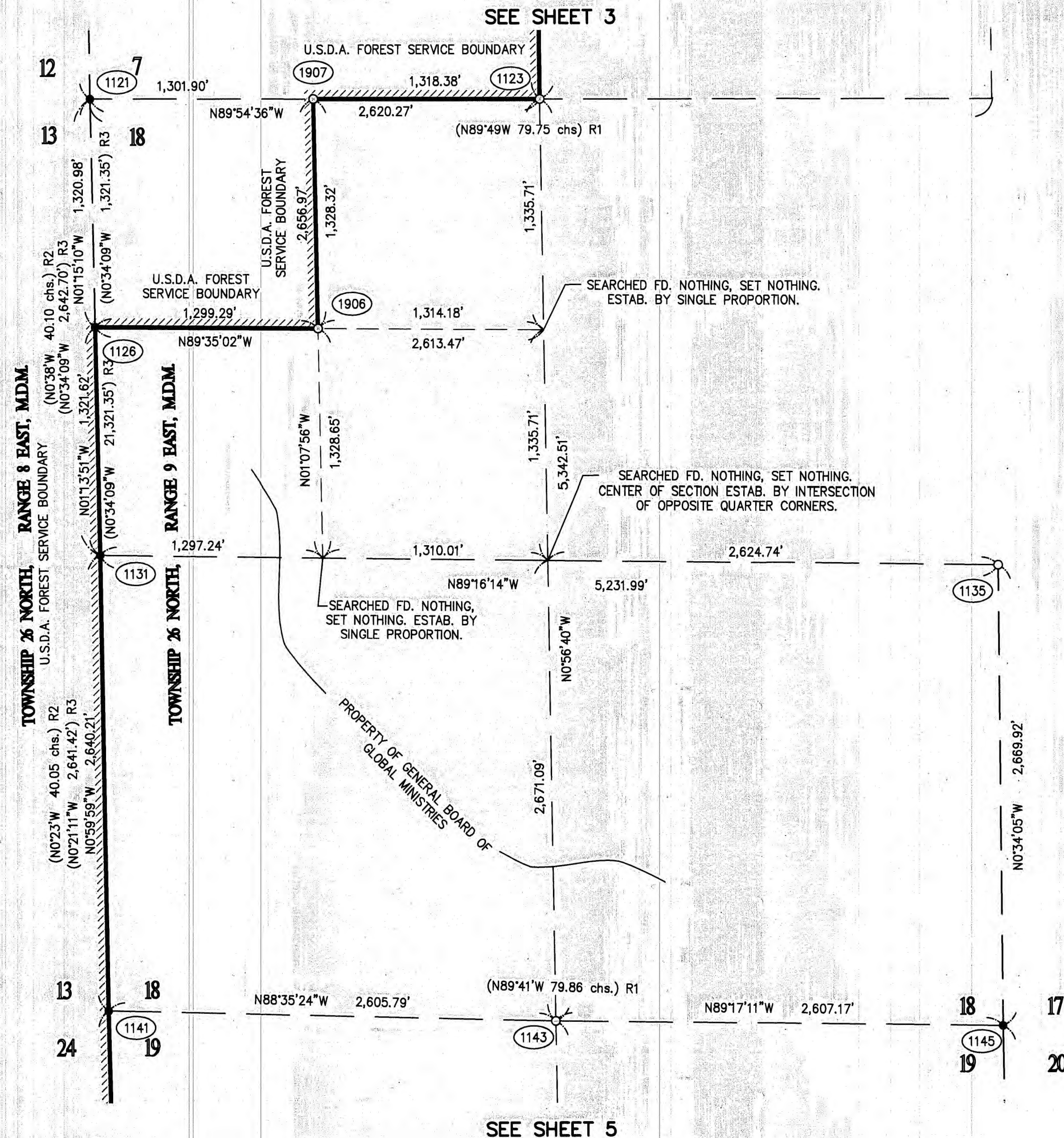
GRAPHIC SCALE



(IN FEET)
1 inch = 500 ft.

MONUMENT NOTES:

- () RECORD INFORMATION PER REFERENCED NUMBER.
- FOUND MONUMENT AS NOTED.
- SET MONUMENT AS NOTED.
- ### INDICATES MONUMENT NO. DESCRIBED IN MONUMENT DESCRIPTIONS SHEETS 7 THROUGH 9.



RECORD OF SURVEY

FOR

U.S.D.A. FOREST SERVICE

SECTIONS 7, 18, 19 AND 30, T.26 N., R.9 E., M.D.M.

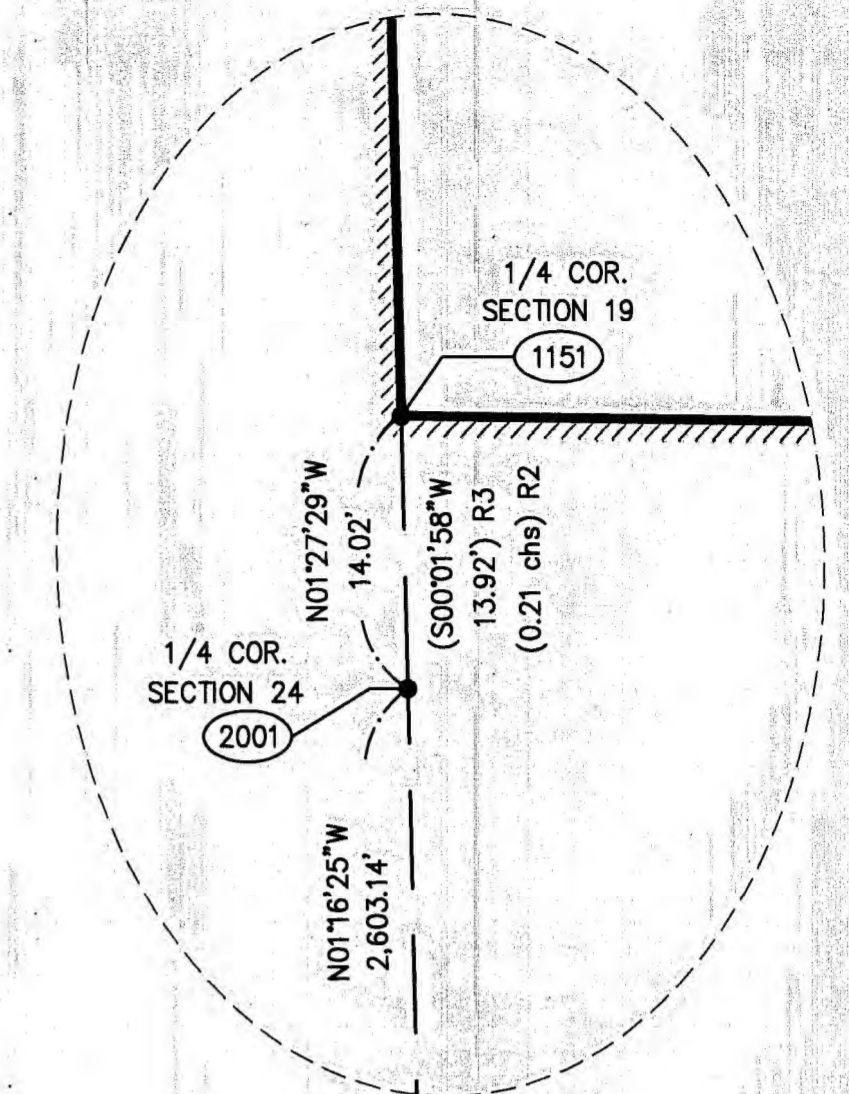
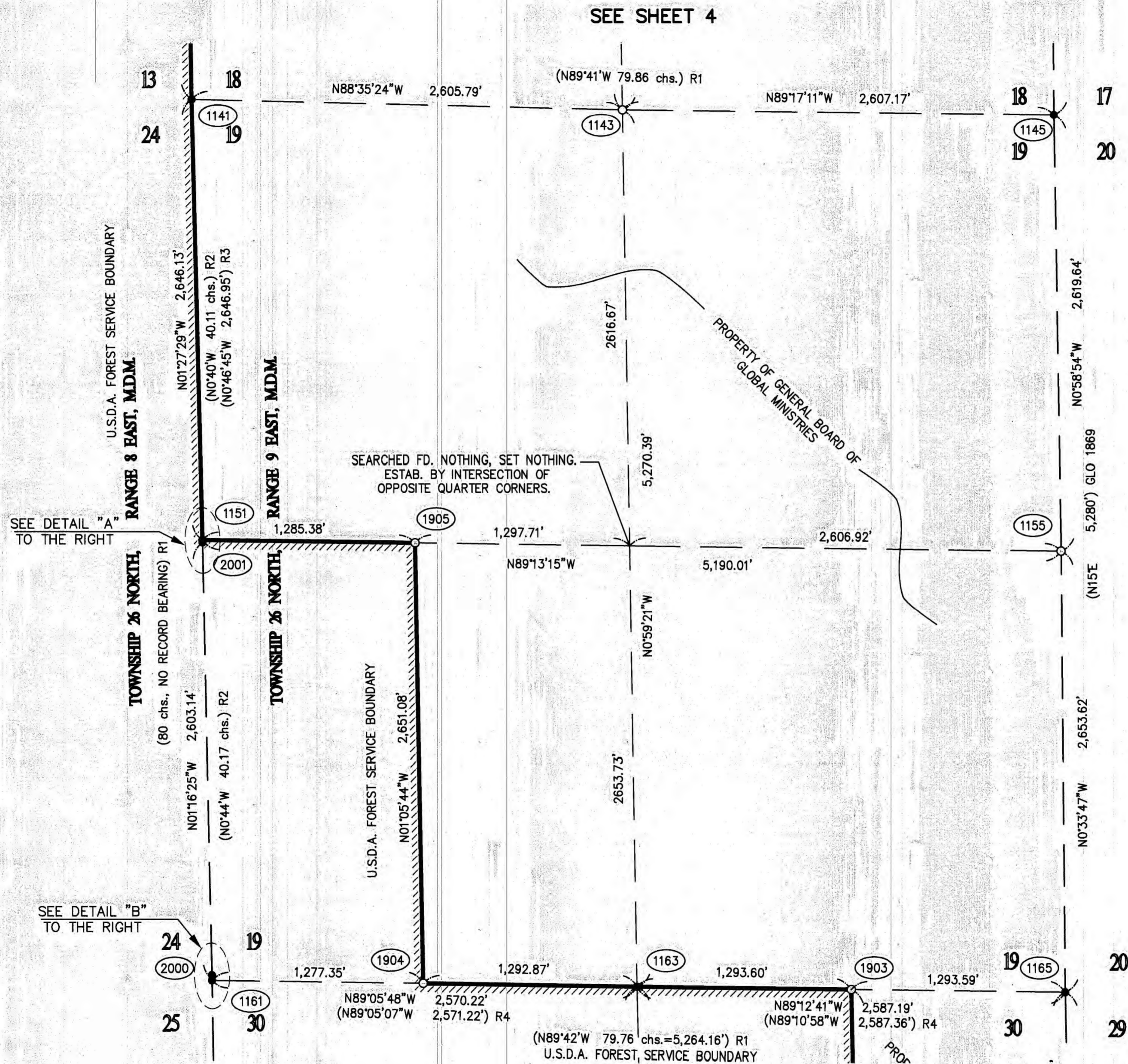
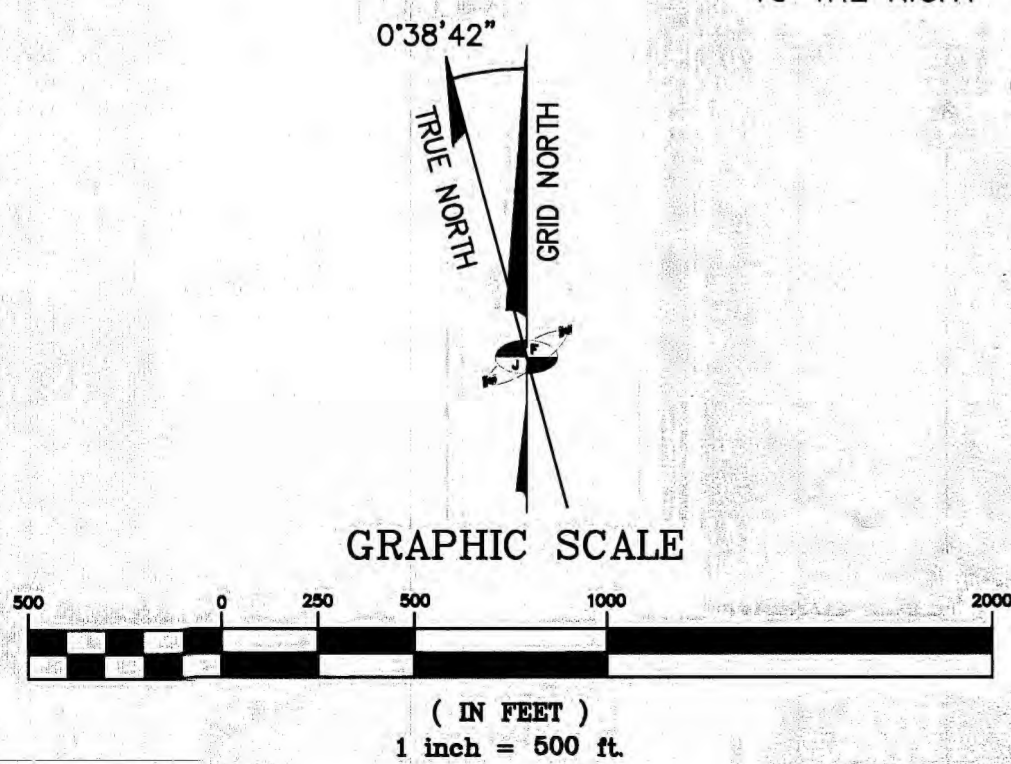
PLUMAS COUNTY ~ CALIFORNIA

BY JOHNSON - FRANK & ASSOC., INC.

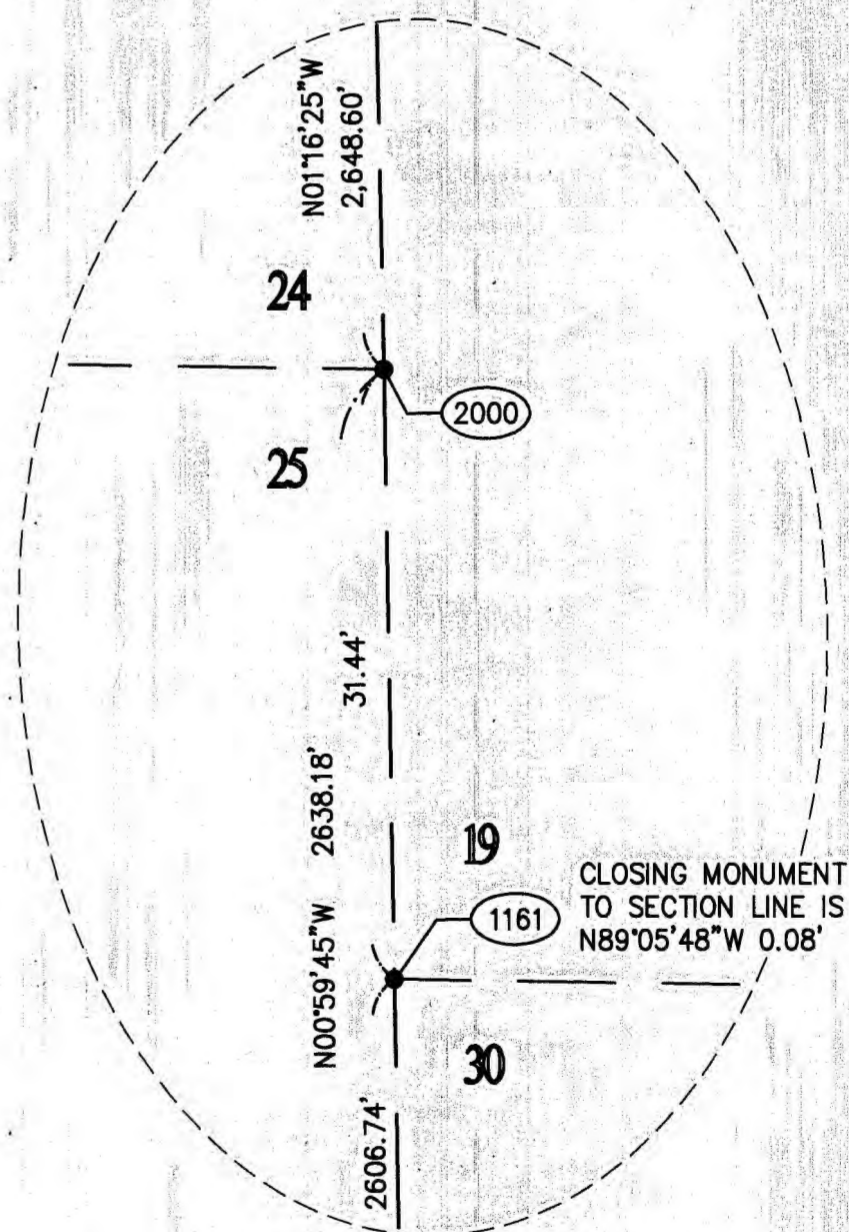
JUNE-JULY, 2020

SHEET 4 OF 9

16 RS 89



DETAIL "A"
SCALE: 1"=10'



DETAIL "B"
SCALE: 1"=10'

RECORD OF SURVEY
FOR
U.S.D.A. FOREST SERVICE
SECTIONS 7, 18, 19 AND 30, T.26 N., R.9 E., M.D.M.
PLUMAS COUNTY ~ CALIFORNIA
BY JOHNSON - FRANK & ASSOC., INC. JUNE-JULY, 2020 SHEET 5 OF 9

16 RS 90



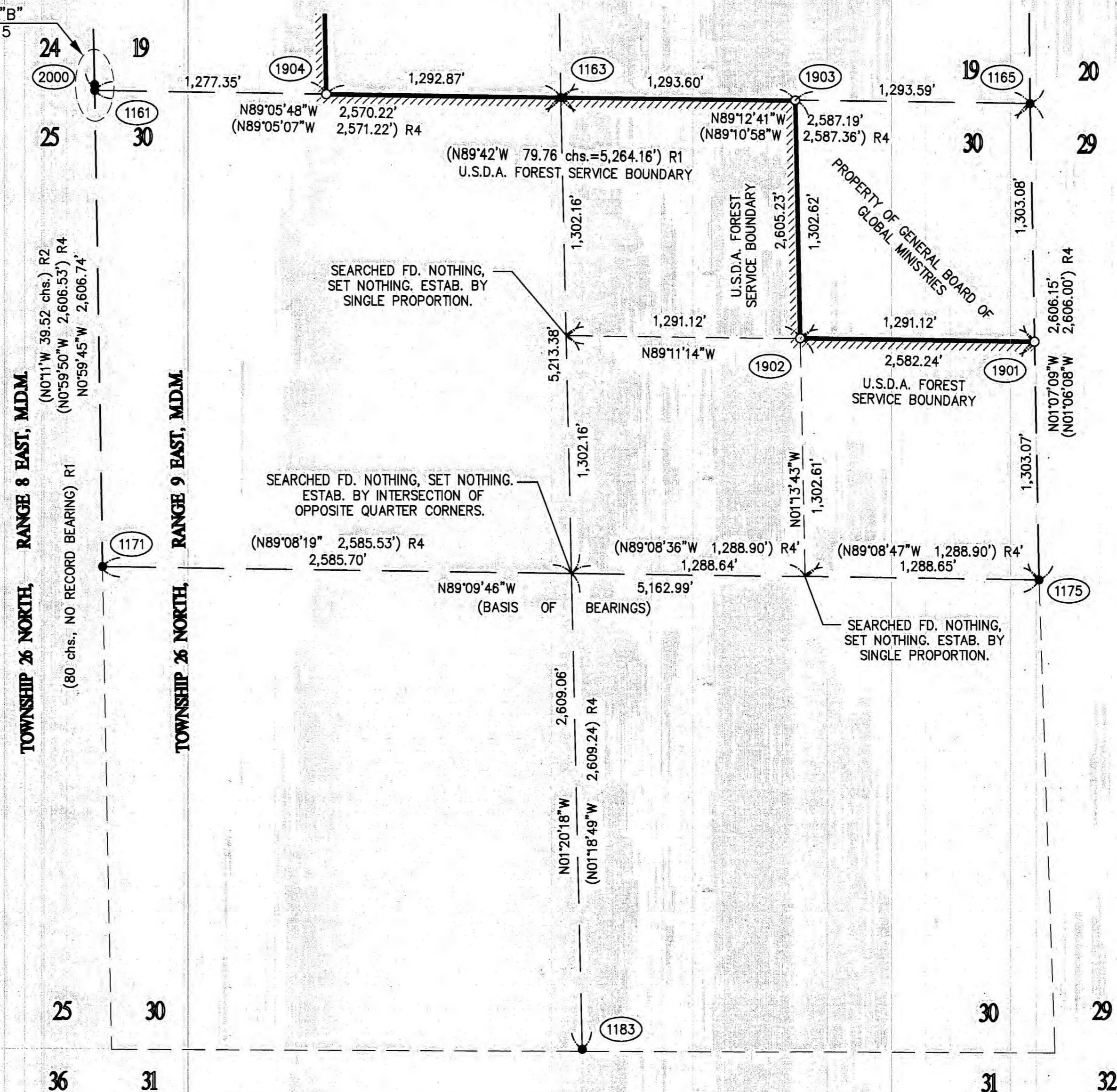
GRAPHIC SCALE



(IN FEET)
1 inch = 500 ft.

SEE DETAIL "B"
ON SHEET 5

SEE SHEET 5



MONUMENT NOTES:

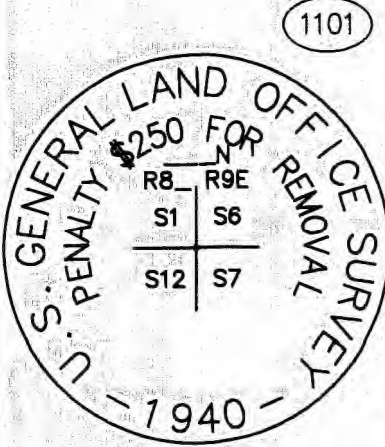
- () RECORD INFORMATION PER REFERENCED NUMBER.
- FOUND MONUMENT AS NOTED.
- SET MONUMENT AS NOTED.
- ### INDICATES MONUMENT NO. DESCRIBED IN MONUMENT DESCRIPTIONS SHEETS 7 THROUGH 9.

RECORD OF SURVEY

FOR
U.S.D.A. FOREST SERVICE
SECTIONS 7, 18, 19 AND 30, T.26 N., R.9 E., M.D.M.
PLUMAS COUNTY ~ CALIFORNIA
BY JOHNSON - FRANK & ASSOC., INC. JUNE-JULY, 2020 SHEET 6 OF 9

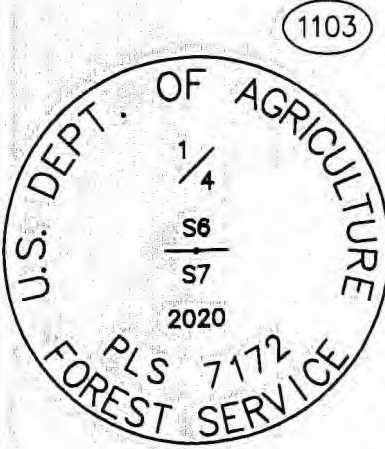
116 RS 91

MONUMENT DESCRIPTIONS



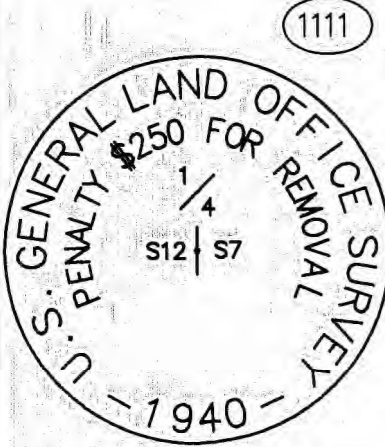
FOUND 1 1/2" IRON PIPE WITH 2 1/2" GLO BRASS CAP, UP 0.50 FEET IN ROCK MOUND, STAMPED AS SHOWN PER THE ORIGINAL GLO SURVEY OF TOWNSHIP 26 NORTH, RANGE 8 EAST, MOUNT DIABLO MERIDIAN, ACCEPTED JANUARY 22, 1942. ACCEPTED AS THE SECTION CORNER COMMON TO SECTIONS 6 AND 7, TOWNSHIP 26 NORTH, RANGE 9 EAST, AND SECTIONS 1 AND 12, TOWNSHIP 26 NORTH, RANGE 8 EAST, MOUNT DIABLO MERIDIAN. CORNER LIES ON FLAT GROUND ON NORTHERLY EDGE OF A SMALL CLEARING APPROXIMATELY 18 FEET SOUTHWESTERLY OF THE CENTER OF A DIRT ROAD. ROCK MOUND WAS REBUILT AND ADDED TO, TO BE 2 FEET IN DIAMETER AND 8 INCHES HIGH. SET POST WITH FOREST SERVICE 54-9 MONUMENT SIGN 1.5 FEET SOUTHWESTERLY OF MONUMENT, PAINTED ROCKS RED. FOUND EXISTING BEARING TREES WITH FOREST SERVICE 54-3 BEARING TREE SIGNS AND BLAZE SCARS. BEARING TREES WERE PAINTED WITH A RED RING, AFFIXED WITH A FOREST SERVICE 54-9 MONUMENT SIGN ON THE BACK AND MAG NAIL & WASHER FOR BEARING AND DISTANCE:

1101BT NW	N22°48'W - 39.6'	48" SUGAR PINE
1101BT NE	N76°45'E - 14.6'	36" SUGAR PINE
1101BT SW	S24°33'W - 35.6'	27" WHITE FIR



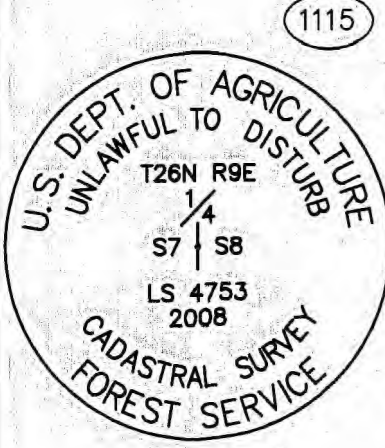
FOUND 1-1/4" IRON PIPE WITH NO CAP, UP 0.20 FEET IN SMALL ROCK MOUND, NO REFERENCE, ACCEPTED AS 1/4 CORNER BETWEEN SECTIONS 6 AND 7, TOWNSHIP 26 NORTH, RANGE 9 EAST, MOUNT DIABLO MERIDIAN. SET NEW 3 1/4" ALUMINUM CAP STAMPED AS SHOWN. CORNER IS LOCATED ON LEVEL GROUND IN MODERATELY DENSE FOREST OF PINE, FIR AND CEDAR, APPROXIMATELY 425 FEET NORTHERLY OF A DIRT ROAD. ROCK MOUND WAS REBUILT AND ROCKS PAINTED RED. SET POST WITH FOREST SERVICE 54-2 BOUNDARY SIGN AND FOREST SERVICE 54-9 MONUMENT SIGN 1 FOOT SOUTHEASTERLY OF MONUMENT. ROCK MOUND IS 2 FEET IN DIAMETER AND 6 INCHES HIGH TWO EXISTING BEARING TREES WERE FOUND WITH K-TAGS, ONE WITH FOREST SERVICE 54-3 BEARING TREE SIGN, NO BLAZE SCARS. A THIRD TREE WAS FOUND TO HAVE FALLEN. OLD K-TAGS AND SIGNS ON BEARING TREES WERE REMOVED, RINGS PAINTED ON TREES, FOREST SERVICE 54-9 MONUMENT SIGNS WERE PUT ON BACK AND FOREST SERVICE 54-3 BEARING TREE SIGNS WERE PUT ON FRONT. MAG NAILS & WASHERS FOR BEARING AND DISTANCE WERE SET IN TREES:

1103BT NW	N89°17'W - 18.9'	18" WHITE FIR
1103BT NE	N60°13'E - 37.5'	19" WHITE FIR



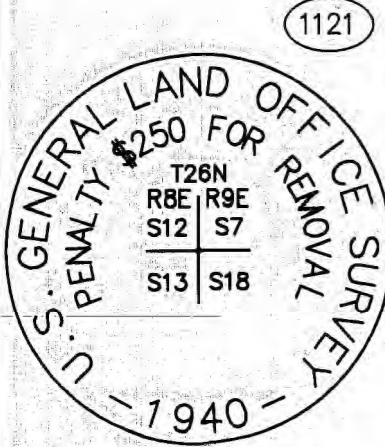
FOUND 3/4" IRON PIPE WITH 2 1/2" GLO BRASS CAP, UP 1 FOOT IN ROCK MOUND, STAMPED AS SHOWN PER RECORD OF SURVEY 7 RS 94, PLUMAS COUNTY. ACCEPTED AS THE WEST 1/4 SECTION CORNER OF SECTION 7, TOWNSHIP 26 NORTH, RANGE 9 EAST, MOUNT DIABLO MERIDIAN. CORNER LIES ON FLAT GROUND AT THE NORTHEASTERLY EDGE OF A GRASSY CLEARING. ROCK MOUND WAS REBUILT AND ADDED TO, TO BE 3 FEET IN DIAMETER AND 8 INCHES HIGH. SET POST WITH FOREST SERVICE 54-2 BOUNDARY SIGN AND FOREST SERVICE 54-9 MONUMENT SIGN 2 FEET SOUTHWESTERLY OF THE MONUMENT, AND ROCK MOUND PAINTED RED. FOUND ONE BEARING TREE WITH FOREST SERVICE 54-3 BEARING TREE SIGN AND BLAZE SCAR, ONE TREE WITH FOREST SERVICE 54-3 BEARING TREE SIGN AND A PAINTED RING. FOUND STUMP OF A THIRD BEARING TREE, BADLY DECAYED. THE TREE HAD FALLEN TOWARDS THE MONUMENT AND SHOWED NO EVIDENCE OF BLAZES OR SIGNS. EXISTING BEARING TREES WERE PAINTED WITH A RED RING, AFFIXED WITH A FOREST SERVICE 54-9 MONUMENT SIGN ON THE BACK, 54-3 BEARING TREE SIGN ON THE FRONT. TWO NEW BEARING TREES WERE ESTABLISHED, ETCHED AND PAINTED 6 FEET ABOVE GROUND, BLAZED AND SCRIBED "1/4 S12 BT". PLACED FOREST SERVICE 54-9 MONUMENT SIGN ON THE BACK AND FOREST SERVICE 54-3 BEARING TREE SIGN ON THE FRONT. SET MAG NAIL & WASHER IN EACH TREE FOR BEARING AND DISTANCE:

1111BT NW1	N56°05'W - 14.1'	12" LODGEPOLE PINE
1111BT NW2	N47°10'W - 67.7'	16" LODGEPOLE PINE DEAD SNAG
1111BT NE	N65°32'E - 88.7'	27" JEFFREY PINE
1111BT SW	S73°01'W - 25.7'	8" LODGEPOLE PINE



FOUND ALUMINUM ROD WITH 3 1/4" ALUMINUM CAP IN SMALL ROCK MOUND, STAMPED AS SHOWN NO REFERENCE, ACCEPTED AS 1/4 CORNER BETWEEN SECTIONS 7 AND 8, TOWNSHIP 26 NORTH, RANGE 9 EAST, MOUNT DIABLO MERIDIAN. CORNER IS LOCATED UNDER A FALLEN TREE, ON A STEEP NORTHERLY SLOPE IN DENSE FOREST OF FIR, PINE AND CEDAR. CORNER IS APPROXIMATELY 600 FEET SOUTHWESTERLY OF A DIRT ROAD. FALLEN TREE WAS CUT AWAY, MONUMENT WAS FOUND PLUMB UNDERNEATH. ROCK MOUND WAS REBUILT AND ADDED TO, TO BE 2 FEET IN DIAMETER AND 6 INCHES HIGH. ROCKS WERE PAINTED RED AND SET POST WITH FOREST SERVICE 54-2 BOUNDARY SIGN AND FOREST SERVICE 54-9 MONUMENT SIGN 1 FOOT NORTHERLY OF THE CORNER. FOUND EXISTING BEARING TREES WITH PAINTED RING AND BLAZE READING "1/4 S7 BT", FOREST SERVICE 54-3 BEARING TREE SIGN ON THE FRONT OF THE TREE AND FOREST SERVICE 54-9 SURVEY MONUMENT SIGN ON THE BACK. EXISTING BLAZES WERE REPAINTED ON BEARING TREES, EXISTING 54-9 SIGNS WERE LEFT; NEW 54-3 SIGNS WERE AFFIXED TO THE FRONT OF TREES, AND MAG NAIL & WASHERS WERE SET FOR BEARING AND DISTANCE:

1115BT NW	N63°59'W - 14.1'	8" CEDAR
1115BT NE	N61°31'E - 19.6'	9" WHITE FIR

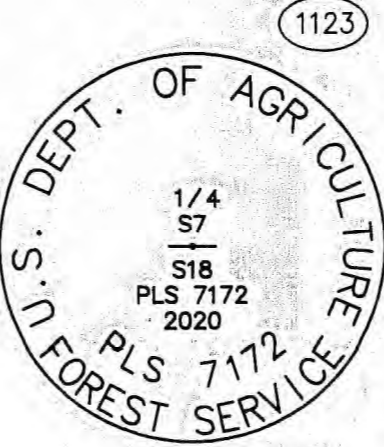


FOUND 2" IRON PIPE WITH 3" GLO BRASS CAP, UP 0.60 FEET IN ROCK MOUND, STAMPED AS SHOWN PER RECORD OF SURVEY 7 RS 94, PLUMAS COUNTY. ACCEPTED AS SECTION CORNER COMMON TO SECTIONS 7 AND 18, TOWNSHIP 26 NORTH, RANGE 9 EAST AND SECTIONS 12 AND 13, TOWNSHIP 26 NORTH, RANGE 8 EAST, MOUNT DIABLO MERIDIAN. CORNER LIES ON A SMALL SIDE CUT ON THE NORTHWESTERLY SIDE OF A DIRT ROAD, APPROXIMATELY 12 FEET FROM THE CENTER OF THE ROAD. ROCK MOUND WAS REBUILT AND ADDED TO, TO BE 3 FEET IN DIAMETER AND 6 INCHES HIGH. ROCKS WERE PAINTED RED AND SET POST WITH FOREST SERVICE 54-2 BOUNDARY SIGN AND FOREST SERVICE 54-9 MONUMENT SIGN 1.5 FOOT NORTHWESTERLY OF THE CORNER. EXISTING BEARING TREES WERE FOUND WITH FOREST SERVICE 54-3 BEARING TREE SIGNS. ONE TREE HAD A VISIBLE BLAZE SCAR, TWO OTHERS DID NOT. BEARING TREES WERE PAINTED WITH A RED RING, AFFIXED WITH A 54-9 SIGN ON THE BACK, 54-3 SIGN ON THE FRONT, AND MAG NAIL & WASHER FOR BEARING AND DISTANCE:

1121BT NE	N54°14'W - 73.9'	30" WHITE FIR
1121BT NE	N28°19'3 - 117.5'	40" WHITE FIR
1121BT SW	S58°11'W - 11.3'	30" WHITE FIR

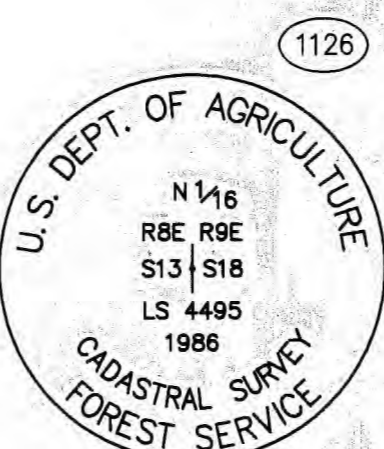
SURVEYOR'S NOTE:
ALL BEARING TREE AND REFERENCE MONUMENTS SHOWN IN THESE MONUMENT DESCRIPTIONS ARE TRUE NORTH BEARINGS.
TO CONVERT TO GRID BEARINGS ROTATE TRUE BEARINGS CLOCKWISE 0°38'42".

MONUMENT DESCRIPTIONS



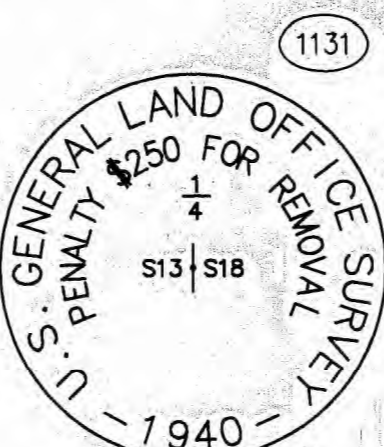
FOUND 3/4" IRON PIPE IN SMALL ROCK MOUND, NO CAP, NO RECORD. ACCEPTED AS 1/4 CORNER BETWEEN SECTIONS 7 AND 18, TOWNSHIP 26 NORTH, RANGE 9 EAST, MOUNT DIABLO MERIDIAN. SET NEW 3 1/4" ALUMINUM CAP, STAMPED AS SHOWN. CORNER LIES AT THE BASE ON THE EASTERLY SIDE OF A 12 INCH WHITE FIR, ON FLAT GROUND, APPROXIMATELY 40 FEET NORTERLY OF A DIRT ROAD. FIR IS BLAZED AS A FOREST TREE. ROCK MOUND WAS REBUILT AND ADDED TO, TO BE 3 FEET IN DIAMETER AND 4 INCHES HIGH. SET POST WITH FOREST SERVICE 54-2 BOUNDARY SIGN AND FOREST SERVICE 54-9 MONUMENT SIGN 1 FOOT NORTHWESTERLY OF MONUMENT, PAINTED ROCKS RED. FOUND TWO BEARING TREES WITH PAINTED RING AND K-TAGS, FOUND ONE STUMP WITH K-TAG. BEARING TREES WERE REPAINTED WITH A RED RING, AND AFFIXED WITH A FOREST SERVICE 54-9 SURVEY MONUMENT SIGN ON THE BACK. FOREST SERVICE 54-3 BEARING TREE SIGN ON THE FRONT. STUMP WAS AFFIXED WITH FOREST SERVICE 54-3 BEARING TREE SIGN ON THE FRONT WITH A RED RING PAINTED AROUND THE TOP OF THE STUMP. MAG NAIL & WASHER FOR BEARING AND DISTANCE:

1123BT NW	N49°15'W - 41.5'	10" WHITE FIR
1123BT NE	N3°38'E - 44.5'	26" WHITE FIR STUMP
1123BT SW	S67°37'W - 40.3'	19" WHITE FIR



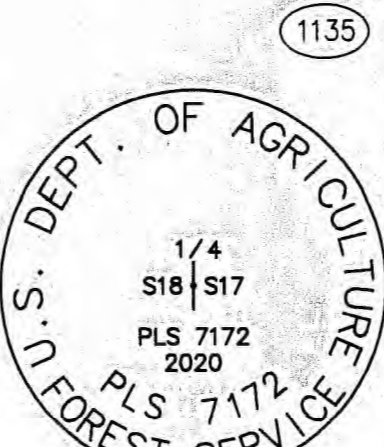
FOUND 2 1/2" ALUMINUM PIPE WITH 3 1/4" ALUMINUM CAP, STAMPED AS SHOWN, UP 0.40 FEET IN ROCK MOUND PER RECORD OF SURVEY 7 RS 94, PLUMAS COUNTY. ACCEPTED AS NORTH 1/16 CORNER BETWEEN SECTION 18, TOWNSHIP 26 NORTH, RANGE 9 EAST AND SECTION 13, TOWNSHIP 26 NORTH, RANGE 8 EAST, MOUNT DIABLO MERIDIAN. CORNER IS LOCATED ON FLAT GRASSY GROUND JUST NORTHERLY OF AN 18 INCH DECAYED STUMP, APPROXIMATELY 20 FEET WESTERLY OF RUSH CREEK. ROCK MOUND WAS REBUILT AND ADDED TO, TO BE 2 FEET IN DIAMETER AND 6 INCHES HIGH. SET POST WITH FOREST SERVICE 54-2 BOUNDARY SIGN AND FOREST SERVICE 54-9 MONUMENT SIGN 1 FOOT NORTHWESTERLY OF MONUMENT, PAINTED ROCKS RED. FOUND EXISTING BEARING TREES WITH BLAZE SCARS, NO SIGNAGE. BEARING TREES WERE PAINTED WITH A RED RING AND BLAZED REPAINTED, AFFIXED WITH A FOREST SERVICE 54-9 SURVEY MONUMENT SIGN ON THE BACK, FOREST SERVICE 54-3 BEARING TREE SIGN ON THE FRONT, AND MAG NAIL & WASHER FOR BEARING AND DISTANCE:

1126BT NW	N49°19'W - 10.0'	13" FORKED LODGEPOLE PINE
1126BT SE	S48°24'E - 61.3'	15" LODGEPOLE PINE



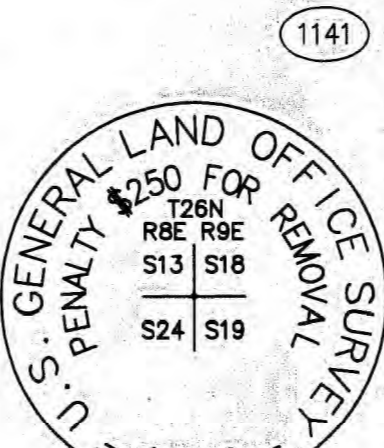
FOUND 3/4" IRON PIPE WITH 3" BRASS CAP, UP 0.50' FEET IN ROCK MOUND, STAMPED AS SHOWN PER RECORD OF SURVEY 7 RS 94, PLUMAS COUNTY. ACCEPTED AS 1/4 CORNER BETWEEN SECTION 18, TOWNSHIP 26 NORTH, RANGE 9 EAST AND SECTION 13, TOWNSHIP 26 NORTH, RANGE 8 EAST, MOUNT DIABLO MERIDIAN. CORNER IS LOCATED ON GENTLE NORTHWESTERLY FACING SLOPE IN MODERATELY DENSE FOREST OF PINE AND FIR, APPROXIMATELY 1,250 FEET EASTERLY OF RUSH CREEK AND 350 FEET NORTHWESTERLY OF DIRT ROAD. ROCK MOUND WAS REBUILT AND ADDED TO, TO BE 2 1/2 FEET IN DIAMETER AND 1 FOOT HIGH. SET POST WITH FOREST SERVICE 54-2 BOUNDARY SIGN AND FOREST SERVICE 54-9 MONUMENT SIGN 2 FOOT WESTERLY OF MONUMENT, PAINTED ROCKS RED. FOUND EXISTING BEARING TREES, ONE WITH BLAZE SCAR, ONE WITHOUT, BOTH WITH 54-2 SIGN. SCRAPED OLD PAINT RING AND BLAZE SCAR AND REPAINTED, PAINTED NEW RING ON SECOND TREE. PUT FOREST SERVICE 54-9 SURVEY MONUMENT SIGNS ON THE BACK OF TREES AND FOREST SERVICE 54-3 BEARING TREE SIGNS ON THE FRONT. SET MAG NAIL & WASHERS FOR BEARING AND DISTANCE:

1131BT NW	N6°39'W - 40.3'	36" SUGAR PINE
1131BT SE	S78°40'E - 64.3'	26" WHITE FIR



FOUND 1" IRON PIPE WITH NO CAP IN A SMALL ROCK MOUND, NO RECORD. ACCEPTED AS 1/4 CORNER BETWEEN SECTION 17 AND 18, TOWNSHIP 26 NORTH, RANGE 9 EAST, MOUNT DIABLO MERIDIAN. SET NEW 3 1/4" ALUMINUM CAP, STAMPED AS SHOWN, IRON PIPE WAS STRAIGHTENED AND ROCK MOUND WAS REBUILT TO 30 INCHES IN DIAMETER AND 6 INCHES HIGH. SET POST WITH FOREST SERVICE 54-9 MONUMENT SIGN 2 FEET NORTHERLY OF MONUMENT, PAINTED ROCKS RED. CORNER IS LOCATED ON GENTLE SOUTHWESTERLY SLOPE COVERED WITH MODERATELY DENSE FIR AND PINE TREES, APPROXIMATELY 525 FEET WESTERLY OF A DIRT ROAD. FOUND EXISTING BEARING TREES: A 16 INCH WHITE FIR STUMP ADJACENT TO A 36 INCH LIVING PINE, A 16 INCH WHITE FIR AND A 30 INCH SUGAR PINE. ALL WITH K-TAGS BUT NO VISIBLE BLAZES. A NEW BEARING TREE WAS ESTABLISHED, A 16 INCH DOUGLAS FIR, BLAZED AND SCRIBED "1/4 S20 BT". RED RING WAS PAINTED ON BEARING TREES, OR TOP OF STUMP, A SIGN READING 54-9 WAS PLACED ON THE BACK OF THE TREE OR STUMP, A SIGN READING 54-3 WAS PLACED ON THE FRONT, AND A MAG NAIL & WASHER PLACED FOR BEARING AND DISTANCE:

1135BT NW	N35°12'W - 35.6'	16" WHITE FIR
1135BT NE	N71°59' - 38.4'	16" DOUGLAS FIR
1135BT E	S77°40'E - 36.5'	30" SUGAR PINE STUMP
1135BT SE	S17°59'E - 39.5'	16" WHITE FIR STUMP



FOUND 2" IRON PIPE WITH 3" GLO BRASS CAP, STAMPED AS SHOWN, UP 0.30 FEET IN ROCK MOUND PER RECORD OF SURVEY 7 RS 94, UNDER A FALLEN DEAD SNAG LOG. ACCEPTED AS THE SECTION CORNER COMMON TO SECTION 18 AND 19, TOWNSHIP 26 NORTH, RANGE 9 EAST AND SECTION 13 AND 24, TOWNSHIP 26 NORTH, RANGE 8 EAST, MOUNT DIABLO MERIDIAN. CORNER IS LOCATED ON A MODERATE NORTHERLY FACING SLOPE IN FIR, PINE AND CEDAR. SECTION OF DEAD SNAG COVERING MONUMENT WAS CUT AWAY, ROCK MOUND WAS REBUILT TO 3 FEET IN DIAMETER AND 1 FOOT HIGH. SET POST WITH FOREST SERVICE 54-9 MONUMENT SIGN 2 FEET WESTERLY OF MONUMENT, PAINTED ROCKS RED. FOUND EXISTING BEARING TREES WITH BLAZE SCARS. SCRAPED AND PAINTED RED RING AND BLAZE SCARS, PUT FOREST SERVICE 54-9 SURVEY MONUMENT SIGNS ON THE BACK OF TREES AND FOREST SERVICE 54-3 BEARING TREE SIGNS ON THE FRONT. SET MAG NAIL & WASHERS FOR BEARING AND DISTANCE:

1141BT NW	N01°36'W - 36.9'	18" DOUGLAS FIR
1141BT NE	N48°47'E - 25.8'	12" WHITE FIR
1141BT SE	S73°15'E - 23.7'	28" WHITE FIR DEAD SNAG
1141BT SW	S47°05'W - 6.0'	27" WHITE FIR

RECORD OF SURVEY

FOR

U.S.D.A. FOREST SERVICE

SECTIONS 7, 18, 19 AND 30, T.26 N., R.9 E., M.D.M.

PLUMAS COUNTY ~ CALIFORNIA

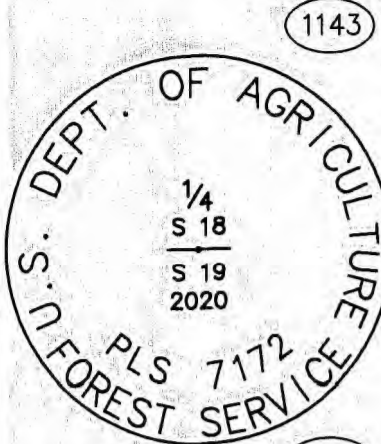
BY JOHNSON - FRANK & ASSOC., INC.

JUNE-JULY, 2020

SHEET 7 OF 9

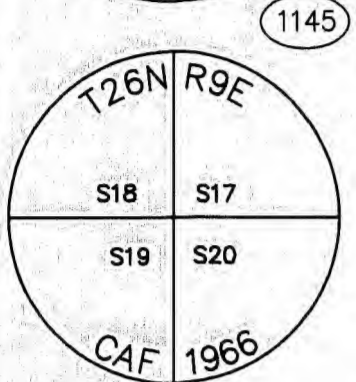
16 RS 92

MONUMENT DESCRIPTIONS



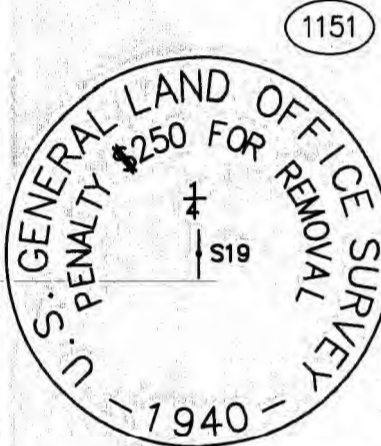
FOUND 3/4" IRON PIPE, NO CAP, NO REFERENCE, ACCEPTED AS 1/4 CORNER BETWEEN SECTION 18 AND 19, TOWNSHIP 26 NORTH, RANGE 9 EAST, MOUNT DIABLO MERIDIAN. RE-SET 2 1/4" ALUMINUM PIPE WITH 3 1/4" ALUMINUM CAP "DIG-IN" MONUMENT STAMPED AS SHOWN. BUILT 26" WIDE BY 6" TALL ROCK MOUND, PAINTED ROCKS RED AND CLEARED A 6' RADIUS AROUND MONUMENT. SET POST 2 FEET SOUTHWESTERLY OF CORNER WITH FOREST SERVICE 54-9 MONUMENT SIGN. CORNER IS LOCATED IN SOUTHWESTERLY CUTBANK OF COW CREEK, APPROXIMATELY 60 FEET SOUTHWESTERLY OF DIRT ROAD. ESTABLISHED, BLAZED AND SCRIBED "1/4 S19 BT" AND RED RING PAINTED AROUND TREE. PUT FOREST SERVICE 54-9 MONUMENT SIGNS ON THE BACK OF TREES AND FOREST SERVICE 54-3 BEARING TREE SIGNS ON THE FRONT. SET MAG NAIL & WASHER FOR BEARING AND DISTANCE.

1143BT SE N64°41'E - 52.2' 24" WHITE FIR
1143BT SW N44°50'E - 56.0' 18" WHITE FIR



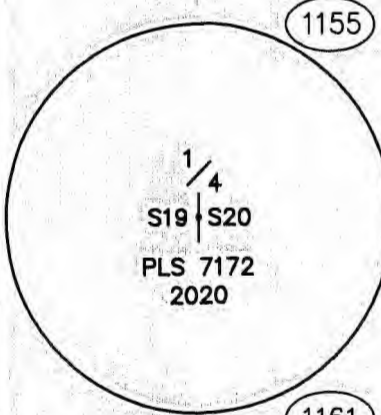
FOUND IRON ROD WITH 2 1/2" CAP, BENT, IN SMALL ROCK MOUND, STAMPED AS SHOWN PER 1972 CORNER CARD N-5. ACCEPTED MONUMENT AS SECTION CORNER COMMON TO SECTIONS 17, 18, 19 AND 20, TOWNSHIP 26 NORTH, RANGE 9 EAST, MOUNT DIABLO MERIDIAN. CORNER IS LOCATED ON SOUTHERLY SLOPE IN OPEN AREA IN MODERATELY DENSE FOREST OF PINE AND WHITE & DOUGLAS FIR. CORNER IS APPROXIMATELY 450 FEET NORTHWESTERLY OF DIRT ROAD. MONUMENT WAS REPLUMBED AND THE ROCK MOUND ADDED TO, TO BE 2 FEET IN DIAMETER AND 5 INCHES HIGH. SET POST WITH FOREST SERVICE 54-9 MONUMENT SIGN 2 FEET NORTHERLY OF MONUMENT, PAINTED ROCKS RED. FOUND EXISTING BEARING TREE WITH NO BLAZE OR SIGNS, AND SUGAR PINE STUMP WITH BLAZE BUT NO SIGNS. EXISTING BEARING TREE WAS PAINTED WITH RED RING, BLAZE ON STUMP WAS REPAINTED. A THIRD BEARING TREE WAS ESTABLISHED, BLAZED AND SCRIBED WITH "T26N R9E S19 BT" AND A RED RING PAINTED AROUND THE TREE. PUT FOREST SERVICE 54-9 SURVEY MONUMENT SIGNS ON THE BACK OF TREES AND FOREST SERVICE 54-3 BEARING TREE SIGNS ON THE FRONT. SET MAG NAIL & WASHERS FOR BEARING AND DISTANCE.

1145BT SE S80°32'E - 37.4' 20" SUGAR PINE STUMP
1145BT SW S3°18'W - 23.1' 16" PINE
1145BT SW2 S41°54'W - 32.3' 19" DOUGLAS FIR



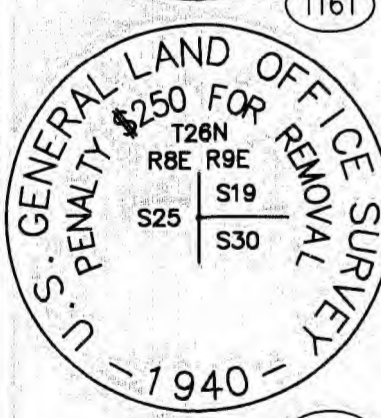
FOUND 3/4" IRON PIPE WITH 3" GLOBRASS CAP, UP 0.50' FEET IN ROCK MOUND, STAMPED AS SHOWN PER RECORD OF SURVEY 7 RS 94. ACCEPTED AS THE WEST QUARTER CORNER OF SECTION 19, TOWNSHIP 26 NORTH, RANGE 9 EAST, MOUNT DIABLO MERIDIAN. CORNER IS LOCATED ON GENTLE SOUTHWESTERLY FACING SLOPE WITH MODERATELY DENSE FIR AND PINE TREES AND MANZANITA. CORNER IS APPROXIMATELY 2,300 FEET WESTERLY OF RUSH CREEK. ROCK MOUND WAS REBUILT AND PAINTED RED. SET POST WITH FOREST SERVICE 54-2 BOUNDARY SIGN AND FOREST SERVICE 54-9 MONUMENT SIGN 2 FEET SOUTHWESTERLY OF MONUMENT. ONE EXISTING BEARING TREE WAS FOUND WITH A BLAZE SCAR, ONE TREE WAS FOUND DEAD WITH NO VISIBLE SCAR, AND A STUMP WAS FOUND WITH NO VISIBLE BLAZES. NO SIGNAGE WAS FOUND. A NEW BEARING TREE WAS ESTABLISHED, BLAZED AND SCRIBED WITH "1/4 S19 BT" AND A RED RING PAINTED AROUND THE TREE. THE TWO EXISTING TREES WERE PAINTED WITH A RED RING, THE STUMP WAS LEFT UNTOUCHED. ALL TREES RECEIVED FOREST SERVICE 54-9 SURVEY MONUMENT SIGNS, AND MAG NAIL & WASHERS FOR BEARING AND DISTANCE.

1151BT NW N29°01'W - 31.4' 20" WHITE FIR
1151BT NW2 N08°31'W - 16.3' 11" SUGAR PINE
1151BT SE S80°02'E - 14.8' 24" WHITE FIR



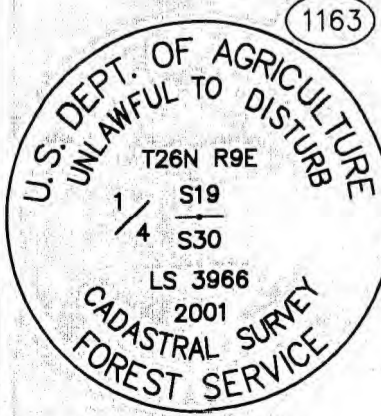
FOUND 26"x14"x4" STONE FALLEN OVER IN ROCK MOUND, PER GOVERNMENT FIELD NOTES. NO MARKINGS ARE VISIBLE ON STONE. MOUND IS 18"x48". ACCEPTED AS QUARTER CORNER BETWEEN SECTION 19 AND SECTION 20, TOWNSHIP 26 NORTH, RANGE 9 EAST, MOUNT DIABLO MERIDIAN. SET 2" IRON PIPE WITH 3 1/4" ALUMINUM CAP, STAMPED AS SHOWN. CORNER IS LOCATED ON SOUTHWESTERLY-FACING SLOPE WITH MODERATELY DENSE PINE, FIR AND CEDAR, APPROXIMATELY 250 FEET FROM DIRT ROAD. ROCK MOUND WAS REBUILT AND PAINTED RED. EXISTING BEARING TREE WAS FOUND WITH FOREST SERVICE LOCATION POSTER WHICH CALLS OUT SET MONUMENT. 1/2 CHAIN EAST OF THE TAG. DISTANCE WAS CHAINED OF 13.4. ALL TREES RECEIVED FOREST SERVICE 54-9 SURVEY MONUMENT SIGNS, AND MAG NAIL & WASHERS FOR BEARING AND DISTANCE.

1155BT SE N15°23'W - 42.5' 20" WHITE FIR
1155BT SW N88°08'E - 14.3' 11" SUGAR PINE



FOUND 1 1/2" IRON PIPE WITH 2 1/2" BRASS CAP, UP 0.30 FEET IN ROCK MOUND PER RECORD OF SURVEY 12 RS 54, PLUMAS COUNTY. ACCEPTED AS SECTION CORNER OF SECTION 19 AND SECTION 30, TOWNSHIP 26 NORTH, RANGE 9 EAST, MOUNT DIABLO MERIDIAN. CORNER IS LOCATED ON A GENTLE SOUTHERLY FACING SLOPE IN DENSE FIR, PINE AND CEDAR, APPROXIMATELY 80 FEET WESTERLY OF DIRT ROAD. ROCK MOUND WAS REBUILT TO 3 FEET IN DIAMETER AND 6 INCHES HIGH. SET POST WITH FOREST SERVICE 54-9 SURVEY MONUMENT SIGN 2 FEET NORTHERLY OF MONUMENT, PAINTED ROCK MOUND RED. FOUND EXISTING BEARING TREES WITH RING AND BLAZE SCAR. SCRAPPED AND CLEAN BLAZE SCAR AND REPAINTED RING RED. PUT FOREST SERVICE 54-9 SURVEY MONUMENT SIGNS ON THE BACK OF TREES AND FOREST SERVICE 54-3 BEARING TREE SIGNS ON THE FRONT. SET MAG NAIL & WASHERS FOR BEARING AND DISTANCE.

1161BT NE N12°16'E - 5.6' 22" WHITE FIR
1161BT SE S42°15'E - 13.2' 26" SUGAR PINE
1161BT SW S34°53'W - 12.5' 24" WHITE FIR

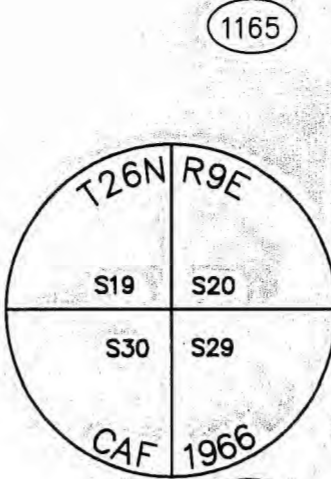


FOUND 5/8" ALUMINUM ROD WITH 3 1/4" ALUMINUM CAP, UP 0.30 FEET IN A ROCK MOUND PER RECORD OF SURVEY 12 RS 54, PLUMAS COUNTY. ACCEPTED AS QUARTER CORNER BETWEEN SECTION 19 AND SECTION 30, TOWNSHIP 26 NORTH, RANGE 9 EAST, MOUNT DIABLO MERIDIAN. CORNER IS LOCATED ON A MODERATE WESTERLY FACING SLOPE IN MODERATELY DENSE PINE AND FIR. ROCK MOUND WAS ADDED TO AND REBUILT TO BE 3 FEET IN DIAMETER AND 6 INCHES HIGH. SET POST WITH FOREST SERVICE 54-2 BOUNDARY SIGN AND FOREST SERVICE 54-9 MONUMENT SIGN 1 FOOT SOUTHERLY OF MONUMENT, PAINTED ROCK MOUND RED. EXISTING BEARING TREES WERE FOUND WITH BLAZE SCARS. SCRAPPED AND PAINTED RED RING AND BLAZE SCARS, PUT FOREST SERVICE 54-9 SURVEY MONUMENT SIGNS ON THE BACK OF TREES AND FOREST SERVICE 54-3 BEARING TREE SIGNS ON THE FRONT. SET MAG NAIL & WASHERS FOR BEARING AND DISTANCE.

1163BT NW N3°38'W - 16.0" 13" WHITE FIR
1163BT SW S33°42'W - 22.0' 18" SUGAR PINE

SURVEYOR'S NOTE:
ALL BEARING TREE AND REFERENCE MONUMENTS SHOWN IN THESE MONUMENT DESCRIPTIONS ARE TRUE NORTH BEARINGS.
TO CONVERT TO GRID BEARINGS ROTATE TRUE BEARINGS CLOCKWISE 0°38'42".

MONUMENT DESCRIPTIONS



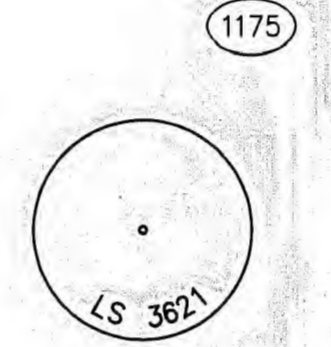
FOUND 3/4" IRON PIPE WITH 2 1/2" ALUMINUM CAP, UP 0.20 FEET IN ROCK MOUND PER RECORD OF SURVEY 12 RS 54, PLUMAS COUNTY. ACCEPTED AS SECTION CORNER OF SECTION 19, SECTION 20, SECTION 29 AND SECTION 30, TOWNSHIP 26 NORTH, RANGE 9 EAST, MOUNT DIABLO MERIDIAN. CORNER IS LOCATED ON A MODERATE SOUTHERLY FACING SLOPE IN THINNED FIR AND PINE. ROCK MOUND WAS REBUILT TO 2 FEET IN DIAMETER AND 4 INCHES HIGH. EXISTING BEARING TREES FOUND WITH VISIBLE BLAZE SCARS. ONE, A 16" STUMP, HAD REMAINING SCRIBING "R9 S19 BT". ESTABLISHED ANOTHER BEARING TREE, A 7" SUGAR PINE. ALL TREES PAINTED WITH RED RINGS, HAD BLAZES PAINTED, PUT FOREST SERVICE 54-9 SURVEY MONUMENT SIGNS ON THE BACK OF TREES AND FOREST SERVICE 54-3 BEARING TREE SIGNS ON THE FRONT. SET MAG NAIL & WASHERS FOR BEARING AND DISTANCE.

1165BT NW N33°05'W - 25.2' 7" SUGAR PINE
1165BT NE N32°16'E - 21.4' 14" WHITE FIR
1165BT SE S76°25'E - 28.2' 32" WHITE FIR (DEAD)
1165BT SW S63°15'W - 14.5' 11" SUGAR PINE
1165BT NW2 N50°41'W - 18.7' 16" STUMP



FOUND 3/4" WITH 2 1/2" BRASS CAP, UP 1 FOOT FROM GROUND, NO ROCK MOUND PER RECORD OF SURVEY 12 RS 54, PLUMAS COUNTY. ACCEPTED AS WESTERN QUARTER CORNER OF SECTION 30, TOWNSHIP 26 NORTH, RANGE 9 EAST, MOUNT DIABLO MERIDIAN. MONUMENT IS LOCATED ON A STEEP NORTHEASTERLY SLOPE IN SMALL OPEN AREA SURROUNDED BY PINE AND FIR. BUILT A ROCK MOUND 2 FEET DIAMETER BY 6 INCHES HIGH, CLEARED BRUSH FROM AROUND MONUMENT. SET POST WITH FOREST SERVICE 54-9 SURVEY MONUMENT SIGN 2 FEET NORTHERLY OF MONUMENT. FOUND EXISTING BEARING TREES, ONE 24" SUGAR PINE WITH FOREST SERVICE 54-3 BEARING TREE SIGN, NO BLAZE SCAR, ONE 22" DOUGLAS FIR WITH BLAZE SCAR, NO SIGN. SCRAPPED BLAZE ON FIR AND PAINTED BLAZE RED, ADDED RED RING AROUND TREE. PUT FOREST SERVICE 54-9 SURVEY MONUMENT SIGNS ON THE BACK OF TREES AND FOREST SERVICE 54-3 BEARING TREE SIGNS ON THE FRONT. ESTABLISHED A THIRD TREE, AN 8" WHITE FIR. ETCHED 6 INCH RING 6 FEET ABOVE GROUND, BLAZED AND SCRIBED "1/4 S30 BT". PAINTED BLAZE AND RING RED. PLACED MAG NAIL & WASHER FOR LINE AND DISTANCE IN ALL TREES.

1171BT NW N46°0'W - 88.8' 22" DOUGLAS FIR
1171BT SE S27°46'E - 14.1' 8" WHITE FIR
1171BT SW S79°09'W - 35.9' 24" SUGAR PINE



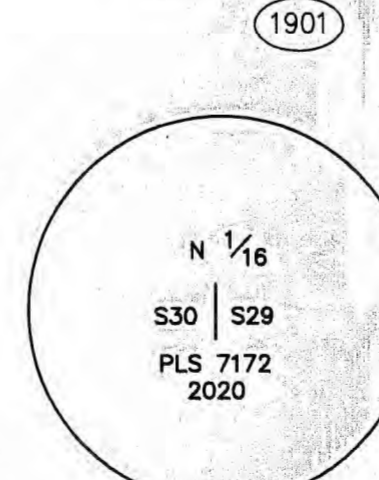
FOUND 5/8" REBAR WITH 1 1/2" ALUMINUM CAP, UP 0.20 FEET IN ROCK MOUND PER RECORD OF SURVEY 12 RS 53, PLUMAS COUNTY. ACCEPTED AS QUARTER CORNER BETWEEN SECTION 29 AND SECTION 30, TOWNSHIP 26 NORTH, RANGE 9 EAST, MOUNT DIABLO MERIDIAN. CORNER IS LOCATED ON A STEEP SOUTHEASTERLY-FACING SLOPE IN FOREST OF PINE, FIR AND OCCASIONAL CEDAR. ROCK MOUND WAS REBUILT AND ADDED TO TO BE 2 FEET IN DIAMETER AND 6 INCHES HIGH. SET POST WITH FOREST SERVICE 54-2 BOUNDARY SIGN AND FOREST SERVICE 54-9 MONUMENT SIGN 1 FOOT NORTHERLY OF MONUMENT, PAINTED ROCKS RED. FOUND EXISTING BEARING TREES, AN 18 INCH CEDAR AND A 32 INCH PONDEROSA PINE, BOTH WITH BLAZE SCARS. SCRAPPED AND CLEANED BLAZE SCARS, PAINTED RED. ADDED RED RING AROUND TREE. PUT FOREST SERVICE 54-9 SURVEY MONUMENT SIGNS ON THE BACK OF TREES AND FOREST SERVICE 54-3 BEARING TREE SIGNS ON THE FRONT, LEFT EXISTING FOREST SERVICE 54-5 LOCATION POSTER ON BACK OF TREE. SET MAG NAIL & WASHERS FOR BEARING AND DISTANCE.

1175BT NE N13°04'E - 17.6' 18" CEDAR
1175BT SW S47°09'W - 9.7' 32" PONDEROSA PINE



FOUND 5/8" DRIVE-IN WITH 3 1/4" ALUMINUM CAP, UP 0.50 FOOT FROM GROUND, NO ROCK PILE PER RECORD OF SURVEY 12 RS 54, PLUMAS COUNTY. ACCEPTED AS QUARTER CORNER BETWEEN SECTION 30 AND SECTION 31, TOWNSHIP 26 NORTH, RANGE 9 EAST, MOUNT DIABLO MERIDIAN. CORNER IS LOCATED ON A MODERATELY STEEP SOUTHERLY FACING SLOPE IN DENSE SMALL FIR AND PINE. GATHERED ROCKS AND MADE A MOUND 2 FEET IN DIAMETER AND 6 INCHES HIGH, PAINTED RED. LEFT EXISTING POST WITH FOREST SERVICE 54-9 SURVEY MONUMENT SIGN, IN GOOD CONDITION, 0.50 FOOT NORTHERLY OF MONUMENT. CLEARED SMALL TREES AROUND MONUMENT. FOUND EXISTING BEARING TREES, ONE 8 INCH DOUGLAS FIR, ONE 13 INCH DOUGLAS FIR, BOTH WITH BLAZE SCARS, NO SIGNAGE. SCRAPPED AND CLEANED BLAZE SCAR AND RING AROUND TREE, PAINTED BOTH RED. PUT FOREST SERVICE 54-9 SURVEY MONUMENT SIGNS ON THE BACK OF TREES AND FOREST SERVICE 54-3 BEARING TREE SIGNS ON THE FRONT. SET MAG NAIL & WASHERS FOR BEARING AND DISTANCE.

1183BT NE N13°54'E - 5.9' 11" DOUGLAS FIR
1183BT SE S22°07'E - 6.2' 8" DOUGLAS FIR



FOUND 2 1/4" ALUMINUM PIPE WITH 3 1/4" ALUMINUM CAP FLUSH IN ROCK MOUND STAMPED "N 1/16 S30 S29 LS4388 1979", NO REFERENCE. MONUMENT IS LOCATED N84°37'W 18.37 FEET OF THE ESTABLISHED CORNER. MONUMENT NOT ACCEPTED. ESTABLISHED THE NORTH 1/16 CORNER BETWEEN SECTION 29 AND SECTION 30, TOWNSHIP 26 NORTH, RANGE 9 EAST, MOUNT DIABLO MERIDIAN BY PRORATION. SET 2 1/4" ALUMINUM PIPE "DIG-IN" MONUMENT WITH 3 1/4" ALUMINUM CAP STAMPED AS SHOWN. BUILT 24 INCH WIDE BY 10 INCH HIGH ROCK MOUND AND PAINTED ROCKS RED. CLEARED A 6 FOOT RADIUS AROUND MONUMENT. SET POST 1 FOOT SOUTHERLY OF MONUMENT WITH FOREST SERVICE 54-2 BOUNDARY SIGN AND FOREST SERVICE 54-9 SURVEY MONUMENT SIGNS. BURIED OLD MONUMENT UPSIDE DOWN IN HOLE NEXT TO NEW MONUMENT, ALONG WITH A MAGNET. CORNER IS LOCATED ON A STEEP NORTHEASTERLY SLOPE IN DENSE FOREST OF PREDOMINANTLY WHITE FIR WITH SOME PINE, CEDAR AND THICK BUSHES. CORNER IS APPROXIMATELY 200 FEET SOUTHERLY OF A SMALL CLEARING. FOUND EXISTING BEARING TREE, A 24 INCH WHITE FIR WITH BLAZE SCAR AND RING AND A FOREST SERVICE 54-3 BEARING TREE SIGN. ESTABLISHED NEW BEARING TREE, A 16 INCH WHITE FIR. PAINTED BLAZE AND BLAZE SCAR, PUT FOREST SERVICE 54-9 SURVEY MONUMENT SIGNS ON THE BACK OF TREES AND FOREST SERVICE 54-3 BEARING TREE SIGNS ON THE FRONT. SET MAG NAIL & WASHERS FOR BEARING AND DISTANCE.

1901BT SE S58°54'E - 29.1' 24" WHITE FIR
1901BT SW S34°24'W - 48.4' 16" WHITE FIR

RECORD OF SURVEY

FOR

U.S.D.A. FOREST SERVICE

SECTIONS 7, 18, 19 AND 30, T.26 N., R.9 E., M.D.M.

PLUMAS COUNTY ~ CALIFORNIA

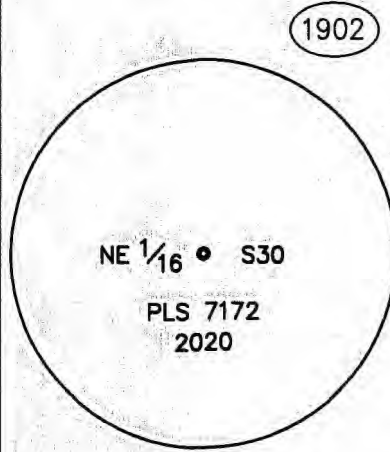
BY JOHNSON - FRANK & ASSOC., INC.

JUNE-JULY, 2020

SHEET 8 OF 9

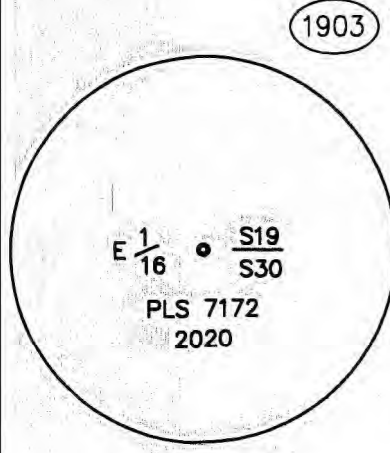
16 RS 93

MONUMENT DESCRIPTIONS



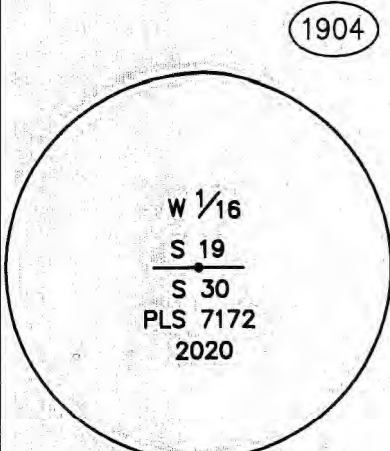
1902 FOUND 3/4" IRON PIPE, NO CAP, UP 0.20 FOOT IN A ROCK MOUND, NO REFERENCE. MONUMENT NOT HELD. ESTABLISHED NORTH 1/16 CORNER BY INTERSECTION. SET 2 1/4" "DIG IN" ALUMINUM PIPE WITH 3 1/4" ALUMINUM CAP, STAMPED AS SHOWN, UP 0.50 FOOT FROM THE GROUND AND PLACED A MAGNET BELOW THE PIPE. CORNER IS LOCATED ON A GENTLE EASTERLY FACING SLOPE IN DENSE FIR AND PINE, APPROXIMATELY 200 FEET EASTERLY OF A DIRT ROAD. BUILT A ROCK MOUND 2 FEET IN DIAMETER AND 6 INCHES HIGH, PAINTED THE ROCKS RED AND SET POST WITH FOREST SERVICE 54-2 BOUNDARY SIGN AND FOREST SERVICE 54-9 MONUMENT SIGN 1.5 FEET SOUTHWESTERLY OF MONUMENT. CLEARED SMALL TREES FROM AREA, LEFT FOUND 3/4" IRON PIPE AS IS, MONUMENT IS LOCATED N19°35'E 7.55 FEET FROM ESTABLISHED CORNER. ESTABLISHED TWO BEARING TREES, A 12 INCH WHITE FIR AND A 17 INCH WHITE FIR. ETCHED RING AND PAINTED RED ON BOTH. ON 12 INCH WHITE FIR, BLAZED AND SCRIBED "NE 1/16 S30 BT" ON 17 INCH WHITE FIR, BLAZED AND SCRIBED XBT. SET FOREST SERVICE 54-9 SURVEY MONUMENT SIGNS ON THE BACK OF TREES AND FOREST SERVICE 54-3 BEARING TREE SIGNS ON THE FRONT. SET MAG NAIL & WASHERS FOR BEARING AND DISTANCE:

1902BT SW S68°55'W - 19.0' 12" WHITE FIR
1902BT SE S52°37'E - 26.3' 17" WHITE FIR
1902RM NE N20°10'50"E - 7.55' 3/4" IRON PIPE



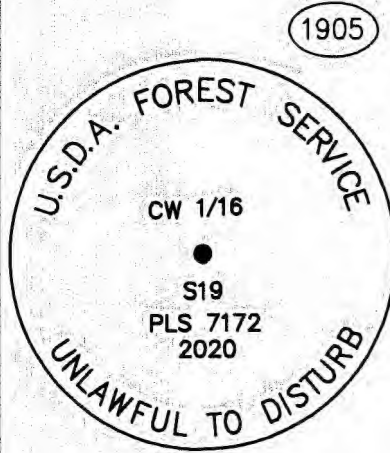
1903 FOUND 3/4" IRON PIPE, NO CAP, UP 1.0 FOOT FROM GROUND. NO REFERENCE. MONUMENT WAS 2.50 FEET WEST OF ESTABLISHED CORNER, NOT HELD. ESTABLISHED CORNER BY PRORATION. SET 2 1/4" "DIG IN" ALUMINUM PIPE WITH 3 1/4" ALUMINUM CAP, STAMPED AS SHOWN. UP 0.10 FOOT IN ROCK MOUND. ROCK MOUND IS 2 FEET IN DIAMETER AND 6 INCHES TALL, PAINTED RED. OLD MONUMENT WAS BURIED UPSIDE DOWN ALONGSIDE NEW MONUMENT AND MAGNET WAS SET IN THE HOLE. CORNER IS LOCATED ON A MODERATE SOUTHWESTERLY SLOPE, IN MODERATELY DENSE FOREST OF FIR AND PINE, INTERSPERSED WITH THICK BUSHES, APPROXIMATELY 580 FEET FROM DIRT ROAD. A 6 FOOT RADIUS WAS CLEARED AROUND NEW MONUMENT AND SET POST WITH FOREST SERVICE 54-2 BOUNDARY SIGN AND FOREST SERVICE 54-9 MONUMENT SIGN 2 FEET SOUTHWESTERLY OF MONUMENT. TWO BEARING TREES WERE ESTABLISHED, A 7 INCH WHITE FIR AND AN 11 INCH SUGAR PINE. BOTH TREES HAD RINGS AND BLAZES SCRAPED AND PAINTED RED. BOTH BLAZES ARE SCRIBED "E 1/16 S30 BT". SET FOREST SERVICE 54-9 SURVEY MONUMENT SIGNS ON THE BACK OF TREES AND FOREST SERVICE 54-3 BEARING TREE SIGNS ON THE FRONT. SET MAG NAIL & WASHERS FOR BEARING AND DISTANCE:

1903BT SW1 S79°13'W - 10.5' 11" SUGAR PINE
1903BT SW2 S22°40'W - 10.0' 7" WHITE FIR



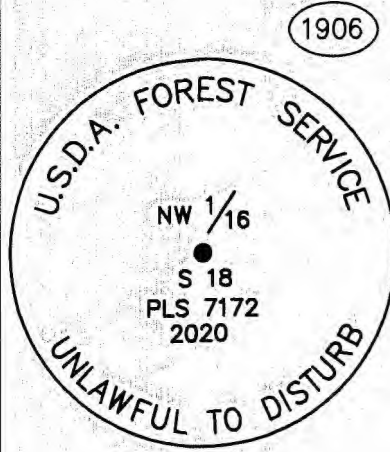
1904 FOUND 1 INCH OPEN PIPE, NO CAP, NO REFERENCE, MONUMENT WAS S55°04'W 0.86 FEET OF ESTABLISHED CORNER, NOT HELD. ESTABLISHED WEST 1/16 CORNER BY PRORATION. SET 2 1/4" ALUMINUM PIPE "DIG-IN" MONUMENT WITH 3 1/4" ALUMINUM CAP, STAMPED AS SHOWN. BUILT 24 INCH WIDE BY 10 INCH HIGH ROCK MOUND AND PAINTED ROCKS RED. CLEARED A 6 FOOT RADIUS AROUND MONUMENT. SET POST FOREST SERVICE 54-2 BOUNDARY SIGN AND FOREST SERVICE 54-9 MONUMENT SIGN 2 FEET SOUTHERLY OF MONUMENT. CORNER IS LOCATED ON STEEP SOUTHERLY SLOPE IN MODERATELY DENSE FOREST OF PINE AND FIR. CORNER IS APPROXIMATELY 225 FEET SOUTHERLY OF DIRT ROAD. TWO BEARING TREES WERE ESTABLISHED, BOTH 16 AND 20 INCH WHITE FIRS. SCRAPED OFF BARK RING AND PAINTED RING RED. SET FOREST SERVICE 54-9 SURVEY MONUMENT SIGNS ON THE BACK OF TREES AND FOREST SERVICE 54-3 BEARING TREE SIGNS ON THE FRONT. BOTH BLAZES ARE SCRIBED "W 1/16 S30 BT". SET MAG NAIL & WASHERS FOR BEARING AND DISTANCE:

1904BT SE S20°43'E - 32.5' 16" WHITE FIR
1904BT SW S83°32'W - 24.9' 20" WHITE FIR



1905 FOUND 1 INCH OPEN PIPE, NO CAP, NO REFERENCE, MONUMENT WAS S81°09'E 0.48 FEET OF ESTABLISHED CORNER, NOT HELD. ESTABLISHED CENTER WEST 1/16 CORNER BY PRORATION. SET 2 1/4" ALUMINUM PIPE "DIG-IN" MONUMENT WITH 3 1/4" ALUMINUM CAP. BUILT 24 INCH WIDE BY 10 INCH HIGH ROCK MOUND AND PAINTED ROCKS RED. CLEARED A 6 FOOT RADIUS AROUND MONUMENT. SET POST FOREST SERVICE 54-2 BOUNDARY SIGN AND FOREST SERVICE 54-9 MONUMENT SIGN 2 FEET SOUTHWESTERLY OF MONUMENT. CORNER IS LOCATED AT THE WESTERLY EDGE OF A CLEARING IN FLAT, OPEN AREA, APPROXIMATELY 130 FEET SOUTHWESTERLY OF END OF DIRT ROAD. FOREST IS MODERATELY DENSE PINE, FIR AND CEDAR. TWO BEARING TREES WERE ESTABLISHED, A 14 INCH CEDAR AND 8 INCH SUGAR PINE. SCRAPED OFF BARK RING AND PAINTED RED. PUT FOREST SERVICE 54-9 SURVEY MONUMENT SIGNS ON THE BACK OF TREES AND FOREST SERVICE 54-3 BEARING TREE SIGNS ON THE FRONT. BOTH BLAZES ARE SCRIBED "CW 1/16 S30 BT". SET MAG NAIL & WASHERS FOR BEARING AND DISTANCE:

1905BT NW N49°49' - 2.4'W 14" CEDAR
1905BT SW S26°26' - 31.4' 8" SUGAR PINE

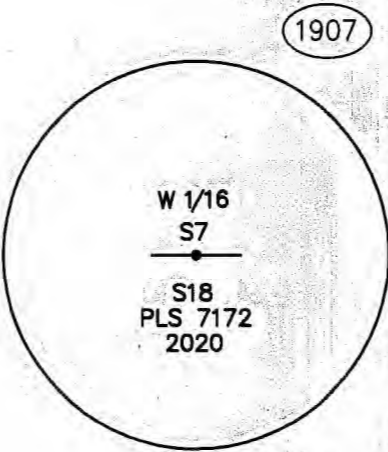


1906 FOUND 1 INCH OPEN PIPE, NO CAP, NO REFERENCE, MONUMENT WAS S88°38'W 0.30 FEET OF ESTABLISHED CORNER, NOT HELD. ESTABLISHED BY PRORATION THE NW 1/16 CORNER OF SECTION 18, T26N, R9E, MOUNT DIABLO MERIDIAN. SET 2 1/4" ALUMINUM PIPE "DIG-IN" MONUMENT WITH 3 1/4" ALUMINUM CAP, STAMPED AS SHOWN. BUILT 24 INCH WIDE BY 10 INCH HIGH ROCK MOUND AND PAINTED ROCKS RED. CLEARED A 6 FOOT RADIUS AROUND MONUMENT. SET POST FOREST SERVICE 54-2 BOUNDARY SIGN AND FOREST SERVICE 54-9 MONUMENT SIGN 1.5 FEET NORTHWESTERLY OF MONUMENT. BURIED OLD MONUMENT UPSIDE DOWN WITH MAGNET IN HOLE NEXT TO MONUMENT. CORNER IS LOCATED IN SPARSE FOREST OF PINE AND FIR, APPROXIMATELY 30 FEET WESTERLY OF DIRT ROAD ON FLAT GROUND. TWO BEARING TREES WERE ESTABLISHED, BOTH 16 INCH JEFFREY PINES. SCRAPED OFF BARK RING AND PAINTED RED. PUT FOREST SERVICE 54-9 SURVEY MONUMENT SIGNS ON THE BACK OF TREES AND FOREST SERVICE 54-3 BEARING TREE SIGNS ON THE FRONT. BOTH BLAZES ARE SCRIBED "XBT". SET MAG NAIL & WASHERS FOR BEARING AND DISTANCE:

1906BT NE N28°04' - 45.4' 16" JEFFREY PINE
1906 BT NW N87°28'W - 19.5' 16" JEFFREY PINE

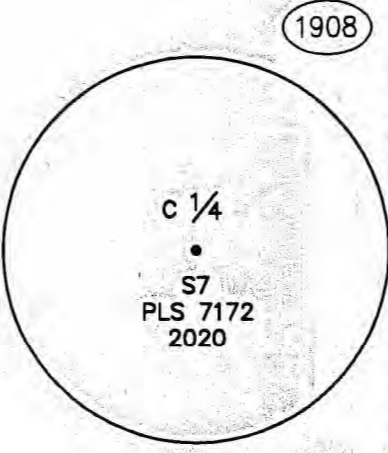
SURVEYOR'S NOTE:
ALL BEARING TREE AND REFERENCE MONUMENTS SHOWN IN THESE MONUMENT DESCRIPTIONS ARE TRUE NORTH BEARINGS.
TO CONVERT TO GRID BEARINGS ROTATE TRUE BEARINGS CLOCKWISE 0°38'42".

MONUMENT DESCRIPTIONS



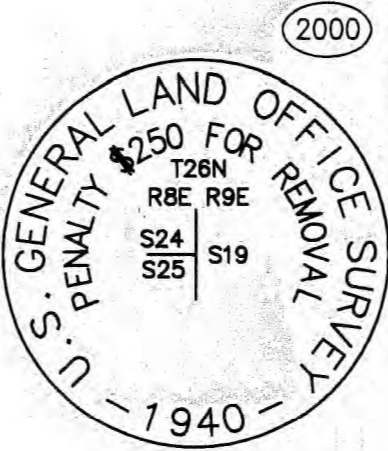
1907 FOUND 1 INCH OPEN PIPE WITH NO CAP, NO REFERENCE, MONUMENT LOCATED S72°59'E 0.49 FEET OF ESTABLISHED CORNER, NOT HELD. ESTABLISHED BY SINGLE PRORATION THE WEST 1/16 CORNER OF SECTION 7, TOWNSHIP 26 NORTH, RANGE 9 EAST, MOUNT DIABLO MERIDIAN. SET 2 1/4" ALUMINUM PIPE "DIG-IN" MONUMENT WITH 3 1/4" ALUMINUM CAP STAMPED AS SHOWN, BUILT 24 INCH WIDE BY 10 INCH HIGH ROCK MOUND AND PAINTED ROCKS RED. CLEARED A 6 FOOT RADIUS AROUND MONUMENT. SET POST FOREST SERVICE 54-2 BOUNDARY SIGN AND FOREST SERVICE 54-9 MONUMENT SIGN 1.5 FEET NORTHWESTERLY OF MONUMENT. BURIED OLD MONUMENT UPSIDE DOWN WITH MAGNET IN HOLE NEXT TO MONUMENT. CORNER IS LOCATED IN FLAT, HEAVILY FORESTED AREA OF FIR AND PINE, APPROXIMATELY 60 FEET EASTERLY OF A DIRT TRAIL AND APPROXIMATELY 400 FEET NORTHWESTERLY OF A DIRT ROAD. TWO BEARING TREES WERE ESTABLISHED, A 22 INCH JEFFREY PINE AND 24 INCH JEFFREY PINE. SCRAPED OFF BARK RING AND PAINTED RED. PUT FOREST SERVICE 54-9 SURVEY MONUMENT SIGNS ON THE BACK OF TREES AND FOREST SERVICE 54-3 BEARING TREE SIGNS ON THE FRONT. SCRIBE IN NE BT1 READS "W 1/16 S7 BT", SCRIBE IN NE BT2 READS "XBT". SET MAG NAIL & WASHERS FOR BEARING AND DISTANCE:

1907BT NE1 N5°37'W - 5.7' 22" JEFFREY PINE
1907BT NE2 N86°17'W - 5.3' 24" JEFFREY PINE

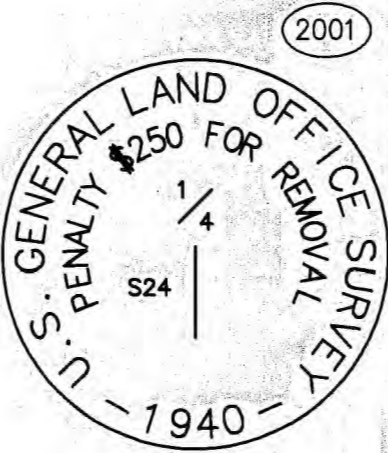


1908 FOUND 1 INCH OPEN PIPE, NO CAP, NO REFERENCE, MONUMENT WAS S78°10'E 0.40 FEET OF THE ESTABLISHED CORNER, NOT HELD. ESTABLISHED BY INTERSECTION THE CENTER 1/4 CORNER OF SECTION 7. TOWNSHIP 26 NORTH, RANGE 9 EAST, MOUNT DIABLO MERIDIAN. SET 2 1/4" ALUMINUM PIPE "DIG-IN" MONUMENT WITH 3 1/4" ALUMINUM CAP STAMPED AS SHOWN. BUILT 24 INCH WIDE BY 10 INCH HIGH ROCK MOUND AND PAINTED ROCKS RED. CLEARED A 6 FOOT RADIUS AROUND MONUMENT. SET POST FOREST SERVICE 54-2 BOUNDARY SIGN AND FOREST SERVICE 54-9 MONUMENT SIGN 1.5 FEET SOUTHWESTERLY OF MONUMENT. BURIED OLD MONUMENT UPSIDE DOWN WITH MAGNET IN HOLE NEXT TO MONUMENT. CORNER IS LOCATED IN FLAT AREA IN MODERATELY DENSE FOREST OF FIR AND PINE, APPROXIMATELY 420 FEET WESTERLY OF A DIRT ROAD AND APPROXIMATELY 300 FEET SOUTHEASTERLY OF THE EDGE OF A CLEARING. TWO BEARING TREES WERE ESTABLISHED, A 36 INCH DOUGLAS FIR AND AN 18 INCH DOUGLAS FIR. SCRAPED OFF BARK RING AND PAINTED RED. PUT FOREST SERVICE 54-9 SURVEY MONUMENT SIGNS ON THE BACK OF TREES AND FOREST SERVICE 54-3 BEARING TREE SIGNS ON THE FRONT. SCRIBE IN 36 INCH DOUGLAS FIR READS "C 1/4 S7 BT", SCRIBE IN 18 INCH DOUGLAS FIR READ "XBT". SET MAG NAIL & WASHERS FOR BEARING AND DISTANCE:

1907BT SW S38°54'W - 18.6' 36" DOUGLAS FIR
1907BT SE S52°32'E - 40.7' 18" DOUGLAS FIR



2000 FOUND 1 1/2" PIPE WITH 3" BRASS CAP, STAMPED AS SHOWN, UP 0.30 FOOT IN ROCK MOUND, PER THE ORIGINAL GLO SURVEY OF TOWNSHIP 26 NORTH, RANGE 8 EAST, MOUNT DIABLO MERIDIAN, ACCEPTED JANUARY 22, 1942. ACCEPTED AS THE COMMON CORNER OF SECTIONS 24 & 25 ON THE EAST LINE OF SAID RANGE 8 EAST.



2001 FOUND 2 1/4" IRON PIPE WITH 2 1/2" BRASS CAP, STAMPED AS SHOWN IN SMALL ROCK MOUND PER 7 RS 94. . THE PIPE IS BENT OVER TO THE SOUTH. DUG DOWN AND LOCATED BASE OF PIPE, WHICH IS STILL SOLID. ACCEPTED AS EAST 1/4 CORNER OF SECTION 24, TOWNSHIP 26 NORTH, RANGE 8 EAST, MOUNT DIABLO MERIDIAN.

RECORD OF SURVEY

FOR

U.S.D.A. FOREST SERVICE

SECTIONS 7, 18, 19 AND 30, T.26 N., R.9 E., M.D.M.

PLUMAS COUNTY ~ CALIFORNIA

BY JOHNSON - FRANK & ASSOC., INC.

JUNE-JULY, 2020

SHEET 9 OF 9

16 RS 94