

SCALE 1" = 30'

- LEGEND**
- O.R. Official Records, Plumas County records
 - Bk. Book
 - p. Page
 - Rec. Record (Deed or other record)
 - Meas. Measured
 - Cor. Corner
 - Fd. Found
 - I.P. Iron Pipe
 - I.P.&T. Iron Pipe & Tag (I.P.&T. set) tagged "John C. Simpson, R.C.E. 11173"

LEONHARDT
(O.R. BK. 104 P. 267)

N.W. 1/4 N.E. 1/4
SEC. 14, T. 24 N., R. 9 E.

S.W. 1/4 N.E. 1/4

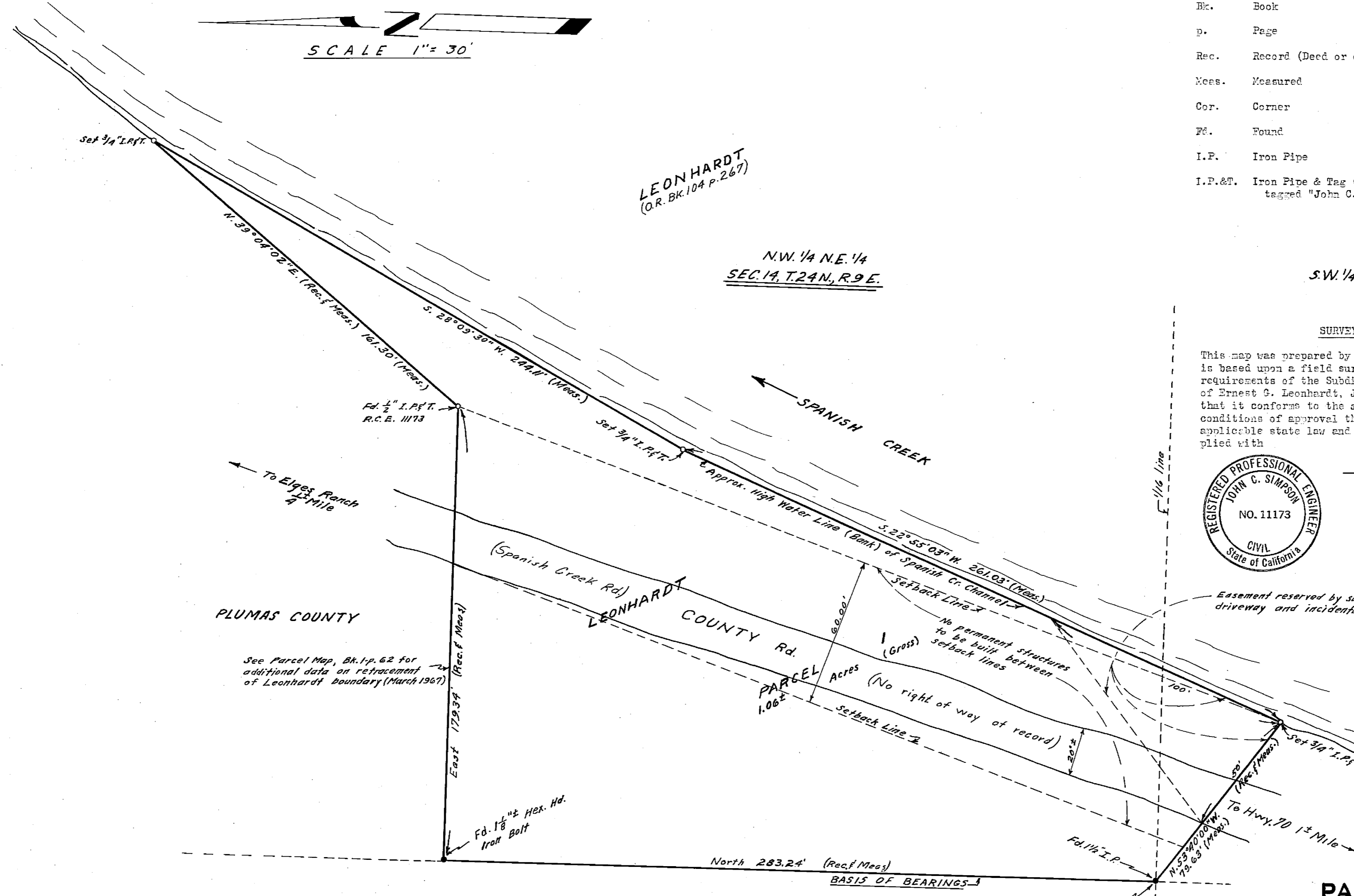
SURVEYOR'S CERTIFICATE

This map was prepared by me or under my direction (and is based upon a field survey) in conformance with the requirements of the Subdivision Map Act at the request of Ernest G. Leonhardt, June 1, 1967. I hereby certify that it conforms to the approved tentative map and the conditions of approval thereof; that all provisions of applicable state law and local ordinances have been complied with



John C. Simpson
John C. Simpson
R.C.E. No. 11173

Easement reserved by subdivider for ingress & egress, driveway and incidental purposes



PLUMAS COUNTY

LEONHARDT COUNTY Rd.

PLUMAS COUNTY
(GANSNER FIELD)
(Bk. 88 of Deeds p. 161)

PARCEL MAP
OF ONE PARCEL
FOR
ERNEST G. LEONHARDT
PLUMAS COUNTY - CALIFORNIA
WITHIN
W1/2, NE 1/4, SEC. 14, T. 24 N., R. 9 E. (M.D.M.)

RECORDER'S CERTIFICATE

Filed for record this 14th day of July, 1967, at 10:25 A.M. in Book 1 of Parcel Maps at Page 80 at the request of John C. Simpson
Meagan Gronwald
Meagan Gronwald
Plumas County Recorder

COUNTY SURVEYOR'S CERTIFICATE

This map has been examined this 14th day of July, 1967, for conformance with the requirements of Section 11575 of the Subdivision Map Act.
Lawrence J. Brock
Lawrence J. Brock
Plumas County Surveyor
R.C.E. No. 13528

NOTE
Tentative Map approved May 22, 1967 (County Surveyor's Plat No. 36)

JOHN C. SIMPSON P.E.
CIVIL ENGINEER
QUINCY - CALIFORNIA