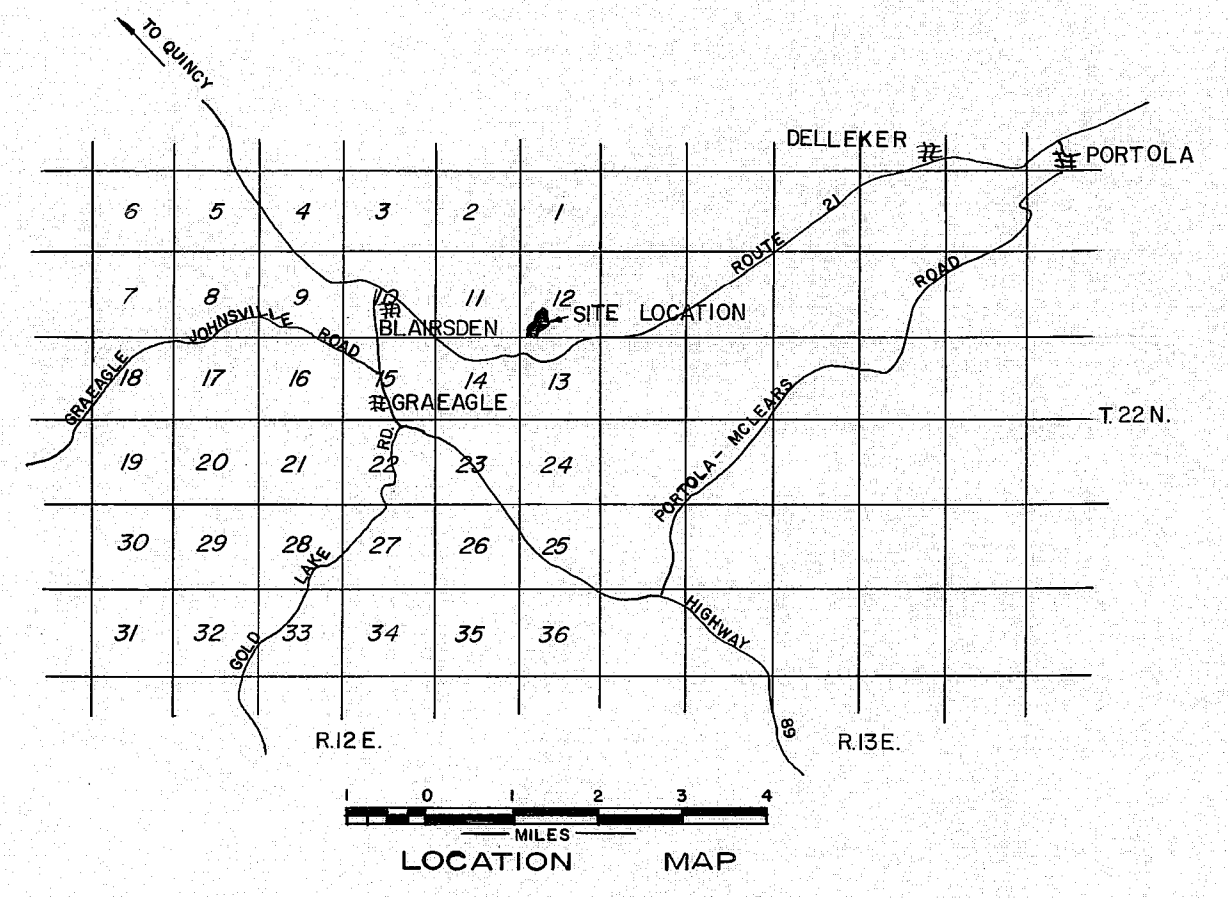
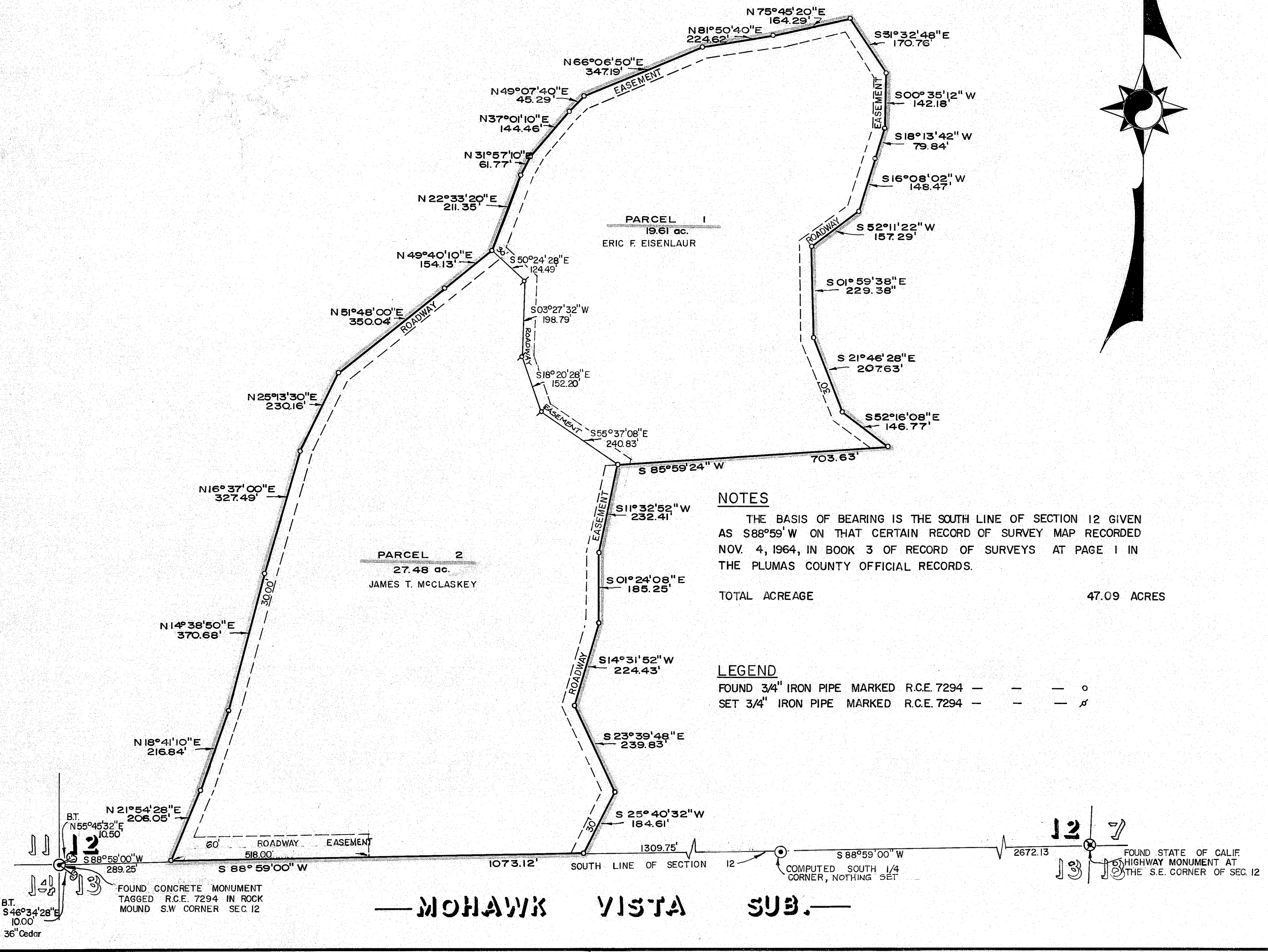


SECTION 12 T.22N. R.12E.



SURVEYOR'S CERTIFICATE

THIS MAP WAS PREPARED BY ME OR UNDER MY DIRECTION AND WAS COMPILED FROM RECORD DATA IN CONFORMANCE WITH THE REQUIREMENTS OF THE SUBDIVISION MAP ACT AT THE REQUEST OF ARCHIE HAMLIN IN MARCH, 1967. I HEREBY CERTIFY THAT IT CONFORMS TO THE APPROVED TENTATIVE MAP AND THE CONDITIONS OF APPROVAL THEREOF, THAT ALL PROVISIONS OF APPLICABLE STATE LAW AND LOCAL ORDINANCES HAVE BEEN COMPLIED WITH.

Edward P. Norris
EDWARD P. NORRIS L.S. 2846

COUNTY ENGINEER'S CERTIFICATE

THIS MAP HAS BEEN EXAMINED FOR CONFORMANCE WITH THE REQUIREMENTS OF SECTION 11575 OF THE SUBDIVISION MAP ACT THIS 24TH DAY OF APRIL, 1967.

Lawrence J. Brock
LAWRENCE J. BROCK R.C.E. 13528

RECORDER'S CERTIFICATE

FILED FOR RECORD THIS 24TH DAY OF April, 1967, AT 1:15 P.M. IN BOOK 1 OF PARCEL MAPS AT PAGE 73 AT THE REQUEST OF WALTER B. GRIMES. RECORDING NO. 3602.

Walter B. Grimes
COUNTY RECORDER BY DEPUTY

PARCEL MAP

A PORTION OF THE SOUTHWEST 1/4 OF SECTION 12 T.22N., R.12E., M.D.B.&M. PLUMAS COUNTY, CALIFORNIA.

MAP OF THE LANDS OF
ERIC F. EISENLAUR
JAMES T. McCLASKEY

SCALE 1"=200' MARCH 1967

WALTER B. GRIMES & ASSOCIATES
CIVIL ENGINEERS & LAND SURVEYORS
1356 MANGROVE AVENUE, CHICO CALIFORNIA