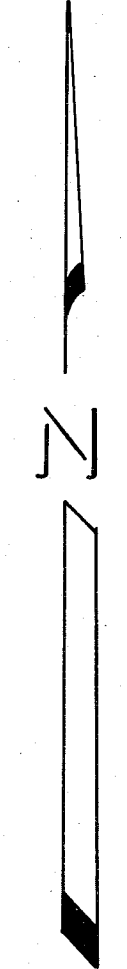
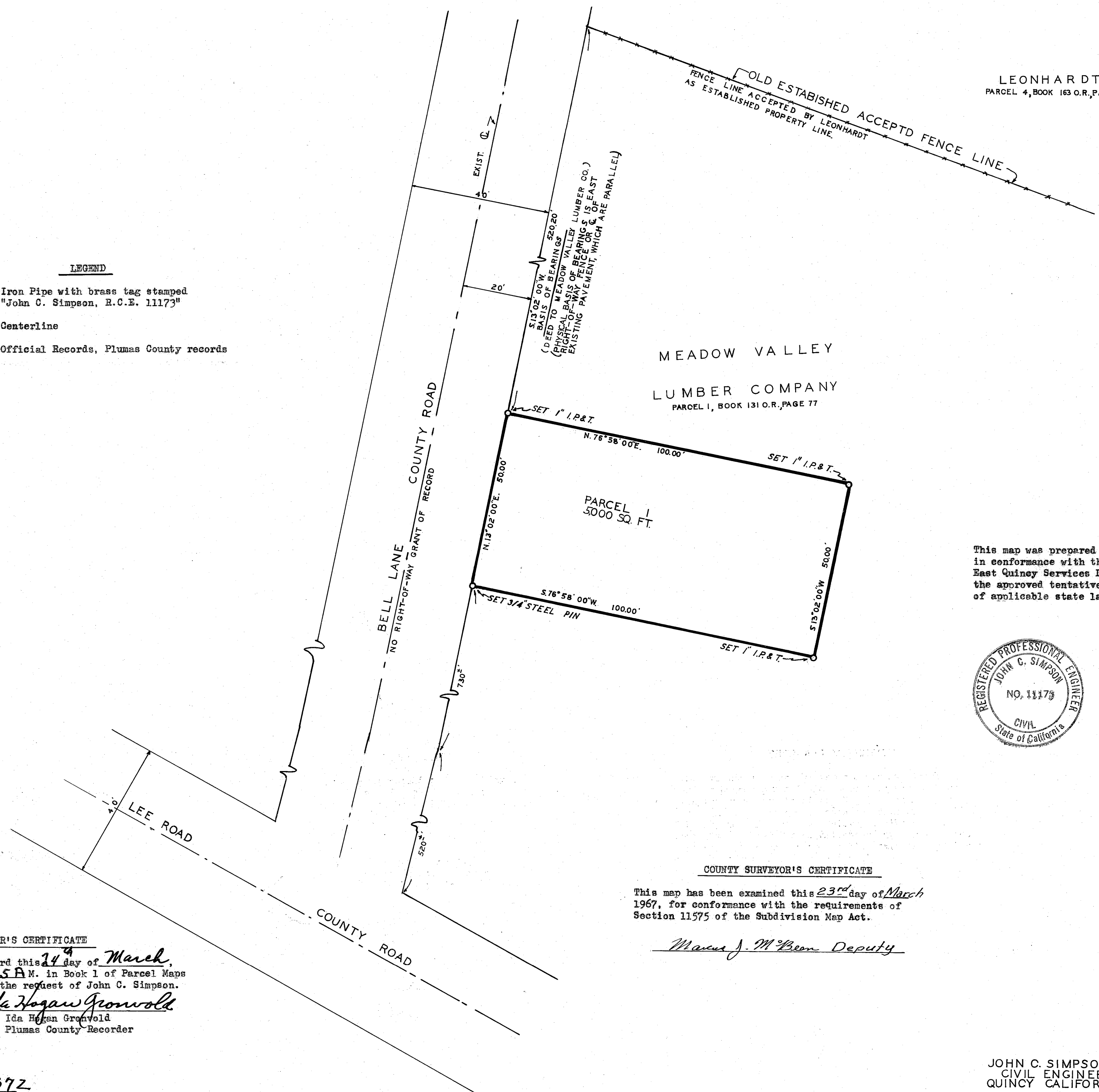


LEONHARDT
PARCEL 4, BOOK 163 O.R., PAGE 1593



SCALE 1" = 20'

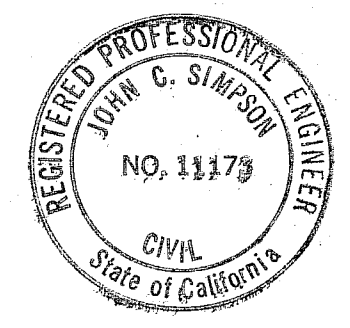
- LEGEND**
- I.P. & T. Iron Pipe with brass tag stamped "John C. Simpson, R.C.E. 11173"
 - ⊕ Centerline
 - O.R. Official Records, Plumas County records



SURVEYOR'S CERTIFICATE

This map was prepared by me or under my direction (and is based upon a field survey) in conformance with the requirements of the Subdivision Map Act at the request of East Quincy Services District March 15, 1967. I hereby certify that it conforms to the approved tentative map and the conditions of approval thereof; that all provisions of applicable state law and local ordinances have been complied with.

John C. Simpson
John C. Simpson
R.C.E. No. 11173



PARCEL MAP
OF
SUBDIVISION OF ONE PARCEL
WITHIN
LOT 2, SEC. 18, T24N, R10E, (MDM)
BEING ACQUIRED FROM MEADOW VALLEY LUMBER COMPANY
BY EAST QUINCY SERVICE DISTRICT
MARCH, 1967

COUNTY SURVEYOR'S CERTIFICATE

This map has been examined this 23rd day of March 1967, for conformance with the requirements of Section 11575 of the Subdivision Map Act.

Marcus J. McBeem Deputy

RECORDER'S CERTIFICATE

Filed for record this 24th day of March, 1967, at 9:15 A.M. in Book 1 of Parcel Maps at Page 67 at the request of John C. Simpson.

Ida Hogan Gronwald
Ida Hogan Gronwald
Plumas County Recorder

No Fee
Fee \$~~5.00~~
File No. 3372

JOHN C. SIMPSON P.E.
CIVIL ENGINEER
QUINCY CALIFORNIA

1pm 6/7