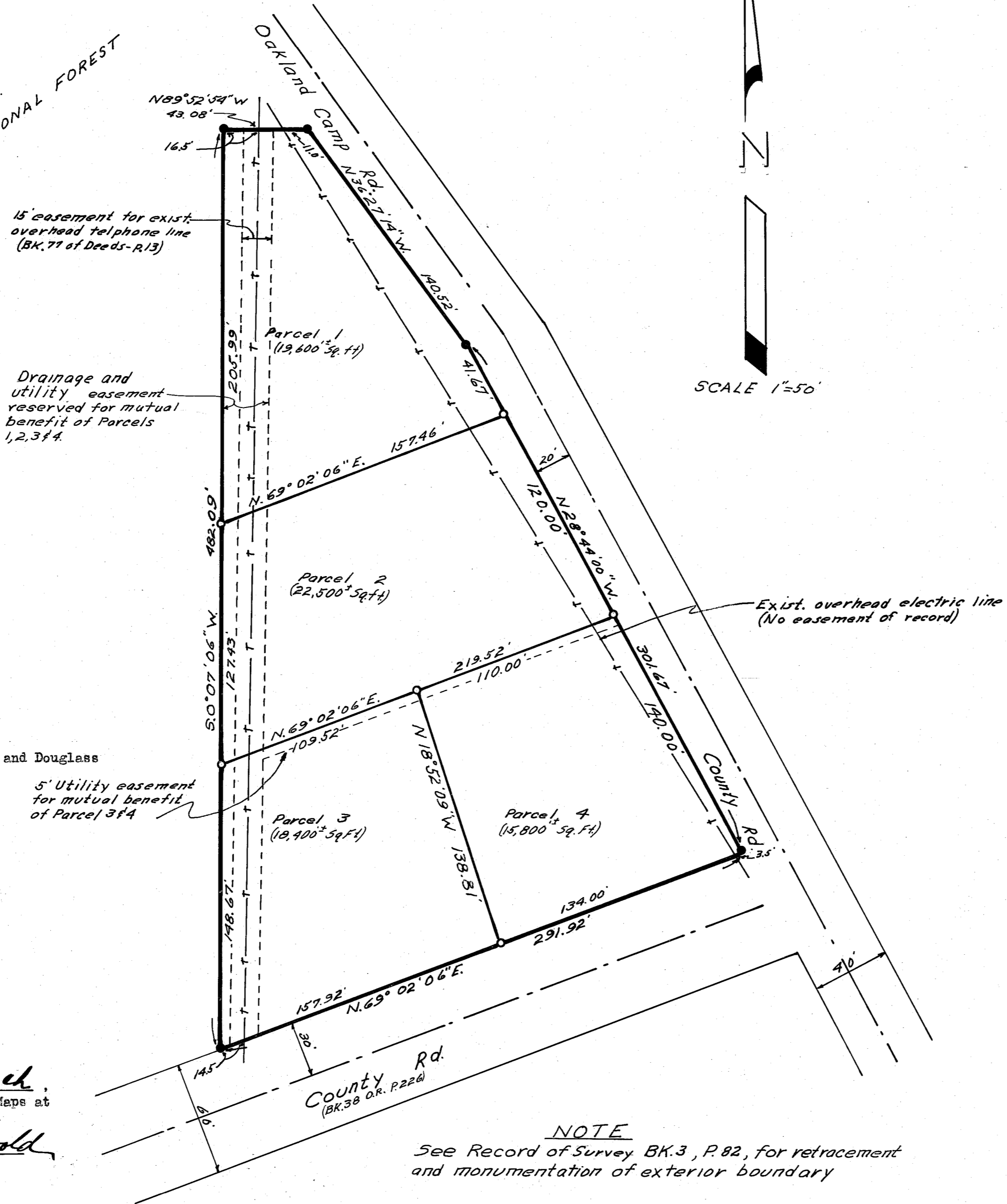
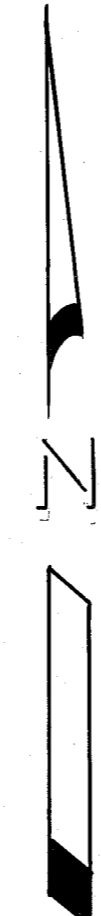


U. S. A.
PLUMAS NATIONAL FOREST



SCALE 1"=50'



- LEGEND**
- Iron pipe and Tag (See Record of Survey Bk. 3, p. 82)
 - Set 5/8" Steel Pin
 - Bk. Book
 - p. Page
 - O.R. Official Records, Plumas County records

SURVEYOR'S CERTIFICATE

This map was prepared by me or under my direction (and is based upon a field survey) in conformance with the requirements of the Subdivision Map Act at the request of John C. Simpson and Rolland N. Douglass March 1, 1967. I hereby certify that it conforms to the approved tentative map and the conditions of approval thereof; that all provisions of applicable state law and local ordinances have been complied with.

John C. Simpson
 John C. Simpson
 R.C.E. No. 11173

COUNTY SURVEYOR'S CERTIFICATE

This map has been examined this 13th day of March, 1967, for conformance with the requirements of Section 11575 of the Subdivision Map Act.

Marion J. McLean Deputy



PARCEL MAP
OF
SUBDIVISION INTO FOUR PARCELS

WITHIN
S.1/2, NE.1/4, NE.1/4, SEC. 2, T.24 N., R.9E.(MDM)
OWNERS

JOHN C. & EMILY M. SIMPSON AND ROLLAND N. & BETTY J. DOUGLASS
MARCH 1967

NOTE

See O.R. Bk. 172, p. 363 for deed to Simpson and Douglass

RECORDER'S CERTIFICATE

Filed for record this 15th day of March, 1967, at 2:30 P. M. in Book 1 of Parcel Maps at Page 61 at the request of John C. Simpson.

Ida Hogan Gronwald
 Ida Hogan Gronwald
 Plumas County Recorder

NOTE

See Record of Survey BK.3, P.82, for retracement and monumentation of exterior boundary

Fee \$5.00 3274
File No.

JOHN C. SIMPSON P.E.
CIVIL ENGINEER
QUINCY CALIFORNIA

1 pm 67