

SURVEYOR'S CERTIFICATE

THIS MAP WAS PREPARED BY ME OR UNDER MY DIRECTION AND WAS COMPILED FROM RECORD DATA IN CONFORMANCE WITH THE REQUIREMENTS OF THE SUBDIVISION MAP ACT AT THE REQUEST OF BERTRAM D. JANES IN JUNE 1966. I HEREBY CERTIFY THAT IT CONFORMS TO THE APPROVED TENTATIVE MAP AND THE CONDITIONS OF APPROVAL THEREOF; THAT ALL PROVISIONS OF APPLICABLE STATE LAW AND LOCAL ORDINANCES HAVE BEEN COMPLIED WITH.

Lawrence J. Brock
LAWRENCE J. BROCK R.C.E. 13528

COUNTY ENGINEER'S CERTIFICATE

THIS MAP HAS BEEN EXAMINED FOR CONFORMANCE WITH THE REQUIREMENTS OF SECTION 11575 OF THE SUBDIVISION MAP ACT THIS 2nd DAY OF March, 1967.

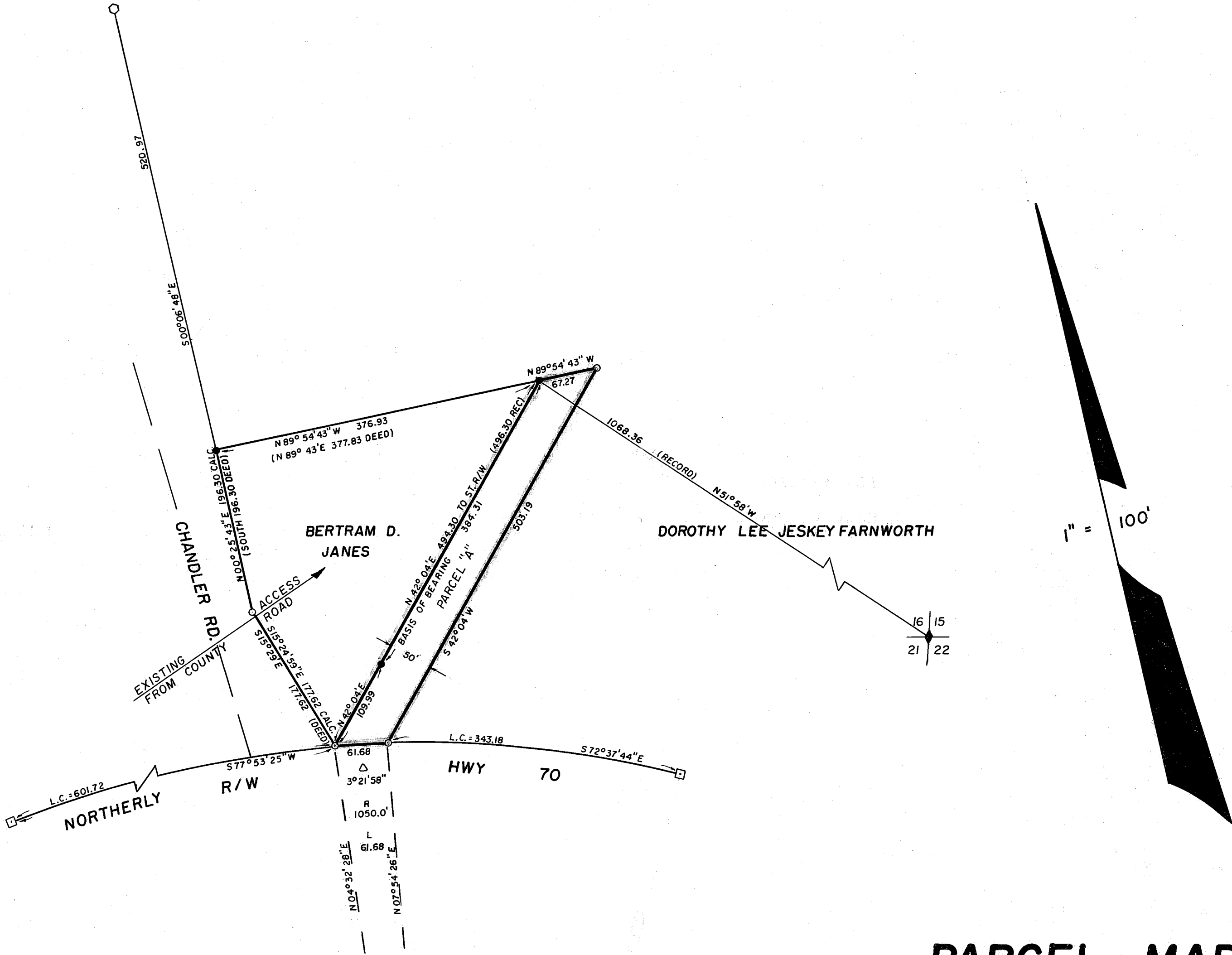
Marcus J. McBeen sr. Deputy
MARCUS J. McBEEN L.S. 2702

RECORDER'S CERTIFICATE

FILED FOR RECORD THIS 2nd DAY OF March, 1967, AT 4:45 PM IN BOOK OF PARCEL MAPS AT PAGE 59 AT THE REQUEST OF BERTRAM D. JANES. RECORDING NO. 3166

Eds Nagan Grouse
COUNTY RECORDER

BY *[Signature]*
DEPUTY



LEGEND

- FOUND IRON PIPE
- CALCULATED POSITION, CORNER NOT SET
- FOUND 6x6 CONCRETE R/W MONUMENT
- FOUND IRON PLATE ON CONCRETE

PARCEL MAP

A PORTION OF THE S.E. 1/4 OF SECTION 16, T.24N., R.10E., M.D.B. & M.

PLUMAS COUNTY, CALIFORNIA
BERTRAM D. JANES, OWNER

SCALE: 1"=100'

JANUARY, 1967