

PARCEL MAP

A portion of the Northwest one-quarter of Section 27, T.27 N., R.8 E., M.D.M.

Basis of Bearings is that shown on Record of Survey, Book 1, page 40 of Record of Surveys, on file in the Plumas County Recorder's office, State of California.

SURVEYOR'S CERTIFICATE

This map was prepared by me or under my direction (and is based upon a field survey) in conformance with the requirements of the Subdivision Map Act at the request of R.B. Brocke December 1965. I hereby certify that it conforms to the approved tentative map and the conditions of approval thereof; that all provisions of applicable State law and local ordinances have been complied with.

Marcus J. McBeen sr.
 Marcus J. McBeen sr. L.S. #2702

COUNTY SURVEYOR'S CERTIFICATE

This map has been examined this 14 day of FEBRUARY 1967 for conformance with the requirements of Section 11575 of the Subdivision Map Act.

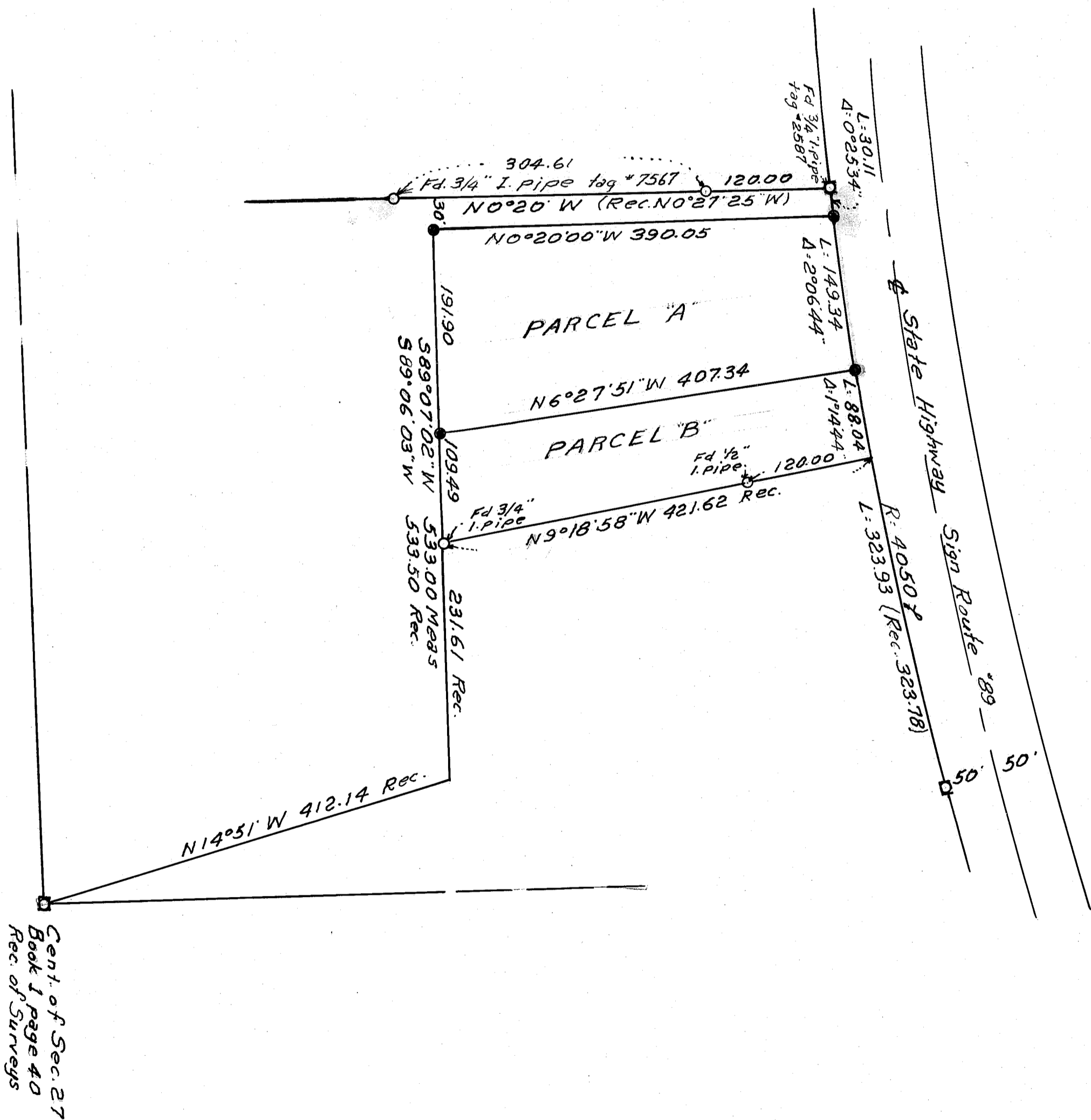
Lawrence J. Brock
 Lawrence J. Brock
 Plumas County Surveyor

#3068 RECORDER'S CERTIFICATE

Filed for record this 17th day of February 1967 at 2:25 P.M. in Book 1 of Parcel Maps at Page 58 at the request of Marcus J. McBeen sr.

Ida Hogan Strombold
 Ida Hogan Strombold
 Plumas County Recorder

- Corners shown Book 1 Page 40 of Record of Surveys
- 3/4" x 1/8" I. pipe set
- Other found corners as noted



1/2001 58