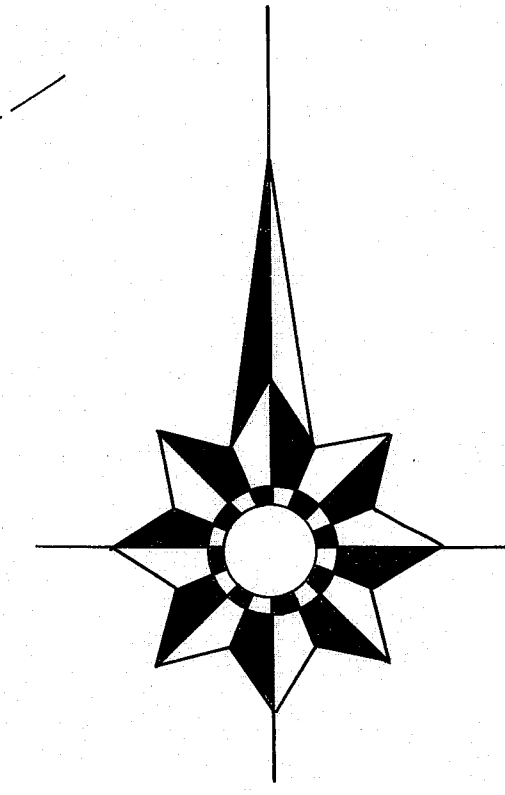
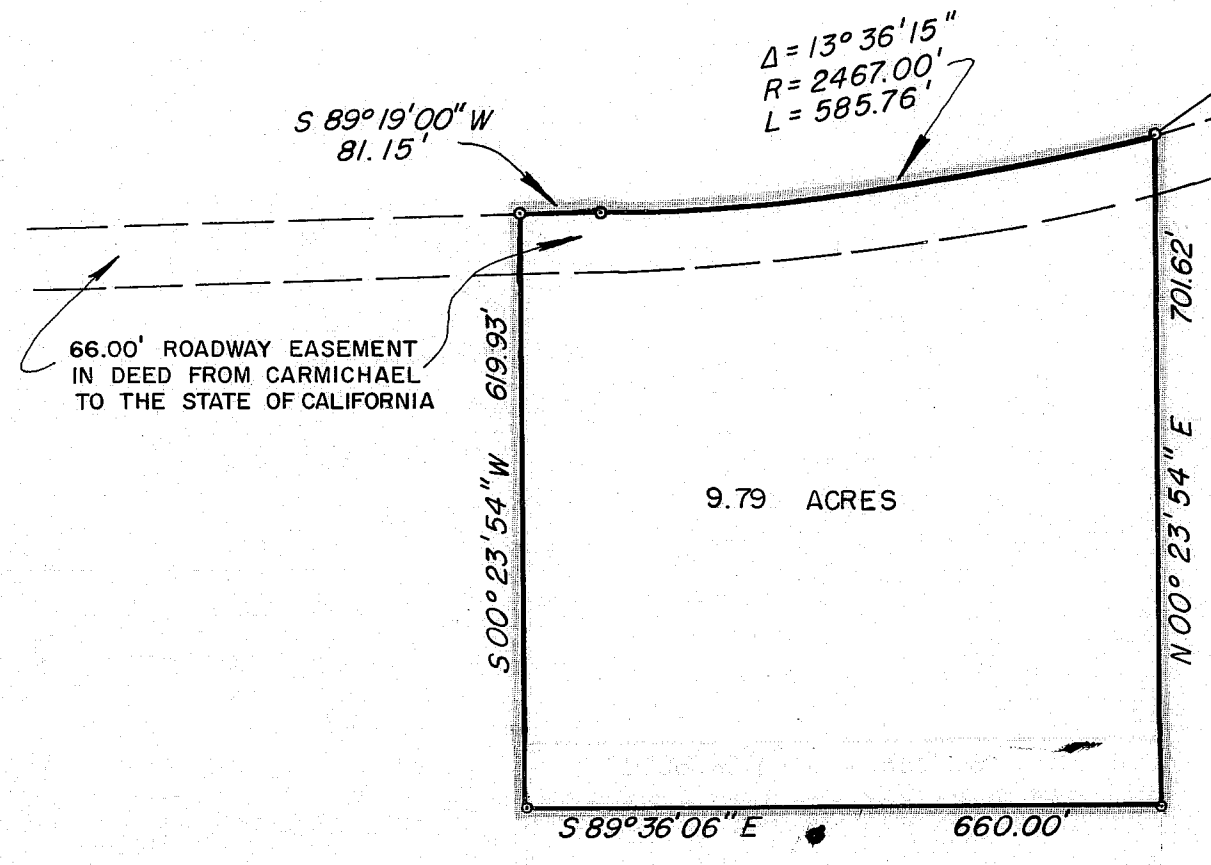


SECTION 11, T. 23N., R. 13E.,
M.D.B. & M.



NOTES

THE BASIS OF BEARING IS THE NORTH LINE OF THAT CERTAIN 66.00 FOOT ROADWAY EASEMENT DESCRIBED IN DEED FROM C. ROY CARMICHAEL AND LAURA M. CARMICHAEL TO THE STATE OF CALIFORNIA, GIVEN AS S 89°19'00" W, FILED IN THE OFFICE OF THE RECORDER OF THE COUNTY OF PLUMAS, STATE OF CALIFORNIA, IN VOLUME 172, PAGE 727.

ALL DISTANCES AND BEARINGS SHOWN ARE GRID; BASED ON CALIFORNIA COORDINATE SYSTEM, ZONE 1. TO CONVERT SHOWN DISTANCES TO GROUND LEVEL DISTANCES, MULTIPLY BY 1.000227

TOTAL ACREAGE 9.79 AC.

A 3/4" IRON PIPE WITH TAG MARKED R.C.E. 7294 WILL BE PLACED AT ALL COMPUTED CORNER LOCATIONS WITHIN ONE YEAR FROM THE DATE ON WHICH THIS MAP IS RECORDED.

SURVEYOR'S CERTIFICATE

THIS MAP WAS PREPARED BY ME OR UNDER MY DIRECTION AND WAS COMPILED FROM RECORD DATA IN CONFORMANCE WITH THE REQUIREMENTS OF THE SUBDIVISION MAP ACT AT THE REQUEST OF PAULINE DAVIS IN DECEMBER 1966. I HEREBY CERTIFY THAT IT CONFORMS TO THE APPROVED TENTATIVE MAP AND THE CONDITIONS OF APPROVAL THEREOF; THAT ALL PROVISIONS OF APPLICABLE STATE LAW AND LOCAL ORDINANCES HAVE BEEN COMPLIED WITH.

Edward P. Norris
EDWARD P. NORRIS L.S. 2846

RECORDER'S CERTIFICATE

FILED FOR RECORD THIS 10th DAY OF February, 1967,
AT 11:30 AM IN BOOK 1 OF PARCEL MAPS AT PAGE 57 AT
THE REQUEST OF WALTER B. GRIMES. RECORDING NO. 3013

FEE \$ _____

Ida Hagan Gronwald
COUNTY RECORDER

BY _____
DEPUTY

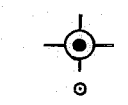
COUNTY ENGINEER'S CERTIFICATE

THIS MAP HAS BEEN EXAMINED FOR CONFORMANCE WITH THE REQUIREMENTS OF SECTION 11575 OF THE SUBDIVISION MAP ACT THIS 10th DAY OF FEBRUARY, 1967.

Lawrence J. Brock
LAWRENCE J. BROCK R.C.E. 13528

LEGEND

DEPARTMENT OF WATER RESOURCES MONUMENT (Found)
COMPUTED CORNER LOCATION



PARCEL MAP

A PORTION OF THE NORTH
HALF OF SECTION 11, T. 23N., R. 13E., M.D.B. & M.,
PLUMAS COUNTY, CALIFORNIA

MAP OF THE LANDS OF
PAULINE DAVIS

SCALE 1" = 200' DECEMBER 1966

WALTER B. GRIMES & ASSOCIATES
CIVIL ENGINEERS & LAND SURVEYORS
1338 MANGROVE AVENUE, CHICO, CALIFORNIA