

SURVEYOR'S CERTIFICATE:

This map was prepared by me or under my direction and is based upon a field survey in conformance with the requirements of the Subdivision map Act at the request of Edward A. Clifford in September 1966.

I hereby certify that it conforms to the approved tentative map and the conditions of approval thereof, that all provisions of applicable State law and Local ordinances have been complied with.

A. J. Vandenberg
A. J. VANDENBERG, Reg. Civil Engineer No. 7567

COUNTY SURVEYOR'S CERTIFICATE:

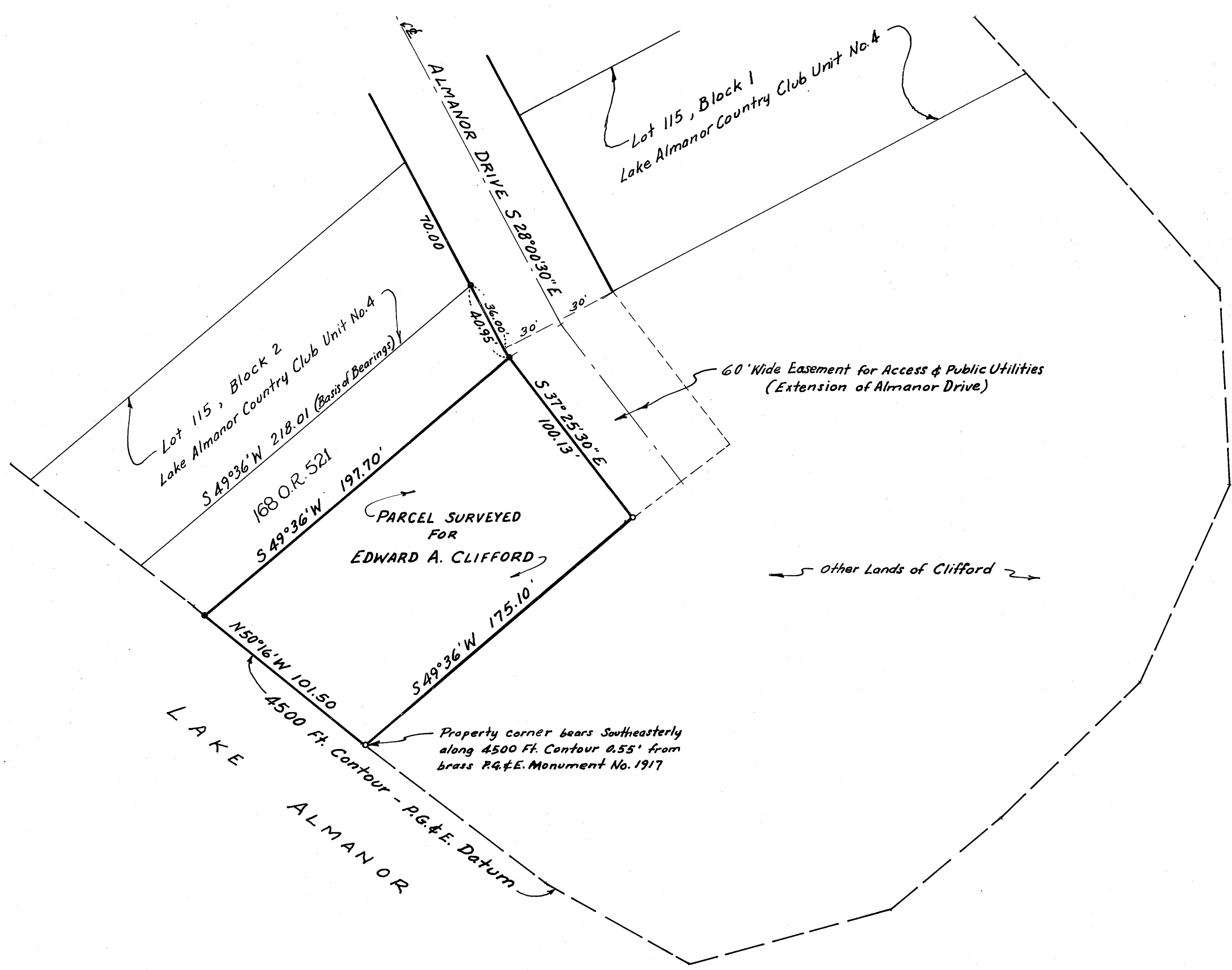
This map has been examined this 5TH day of January, 1967, for conformance with the requirements of Section 11575 of the Subdivision Map Act.

Lawrence J. Brock
LAWRENCE J. BROCK R.C.E. 13528, Plumas County Surveyor

COUNTY RECORDER'S CERTIFICATE:

Filed for Record this 5th day of Jan. 1967, at 4:01 P.M., in Book 1 of Parcel Maps, at page 56, at the request of D. J. Bank.

Fee: \$500
File No: 2752 Ida Hogan Gravnolds
IDA HOGAN GRONVOLD, Plumas County Recorder
Debra... Deputy



SCALE: 1" = 40'
Basis of Bearings is the record for Lake Almanor Country Club Unit No. 4, subdivision

- LEGEND -
- Found iron pipe tagged "LS 2322"
 - Set iron pipe tagged "LS 3202"

PARCEL MAP FOR
EDWARD A. CLIFFORD
PORTION OF SE 1/4 OF SECTION 1
T. 27 N., R. 7 E., M.D.B. & M.
PLUMAS COUNTY, CALIFORNIA
SCALE: 1" = 40'

Survey by: VANDENBERG & SIMPSON - ENGINEERS & SURVEYORS, Susanville, Cal.