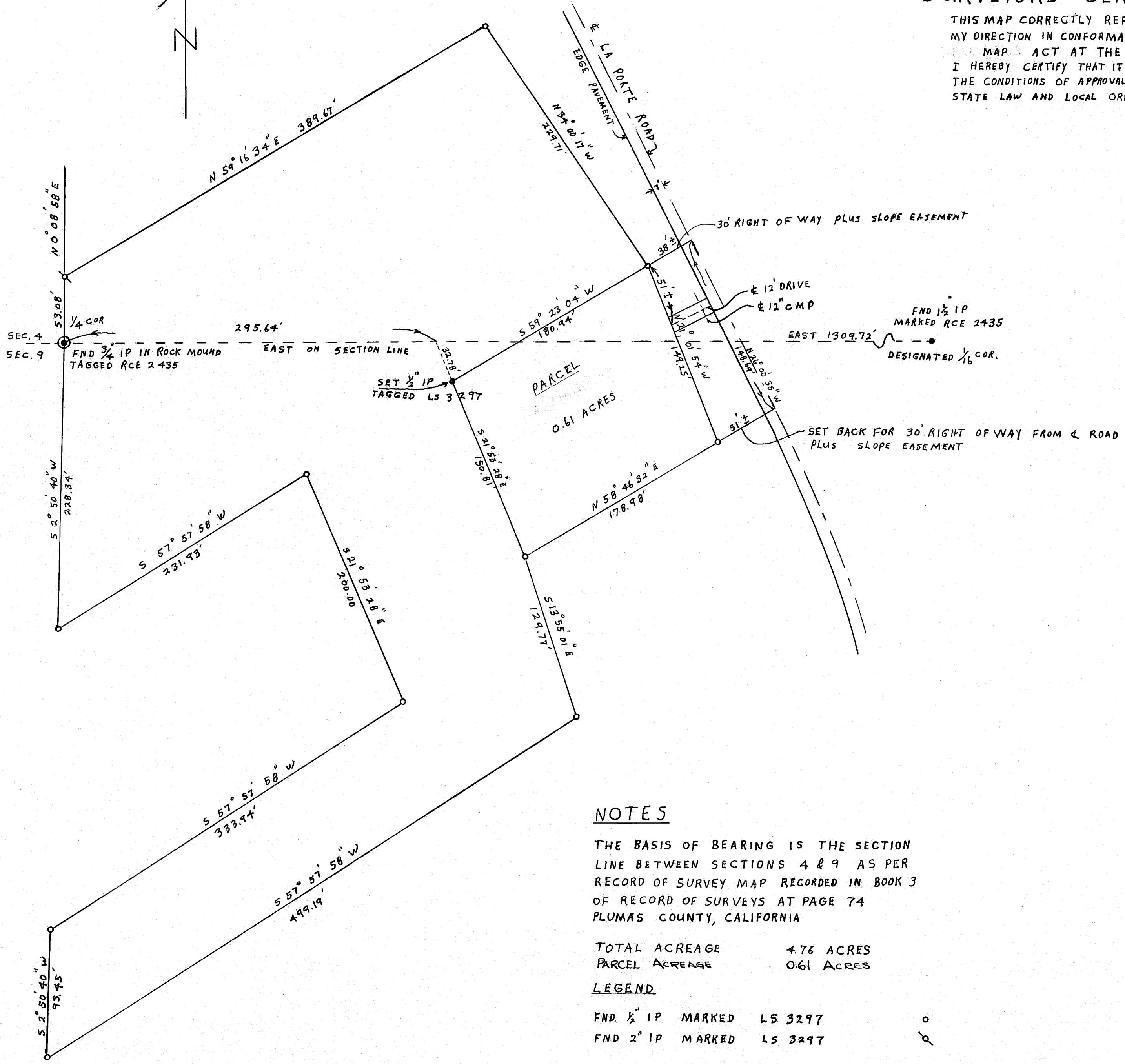
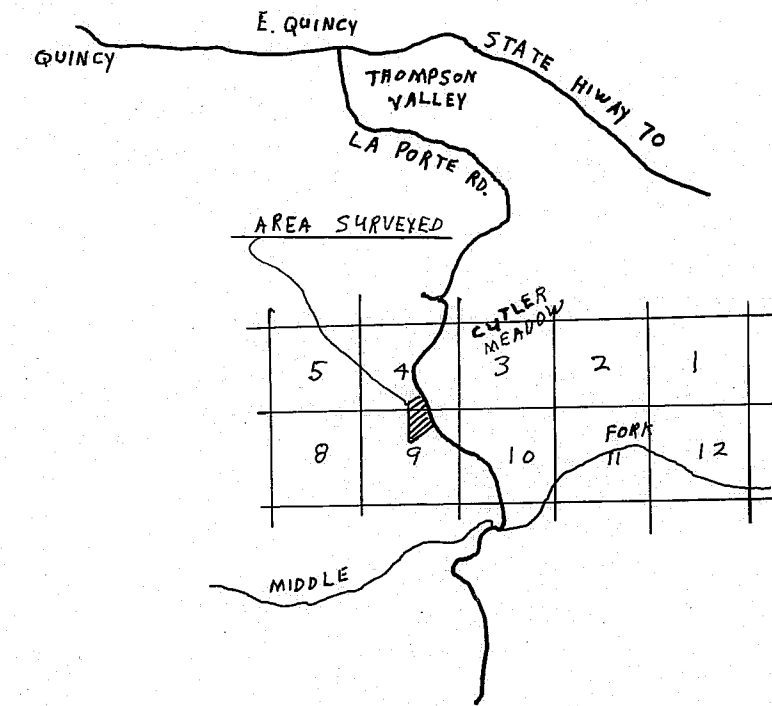


### SURVEYOR'S CERTIFICATE

THIS MAP CORRECTLY REPRESENTS A SURVEY MADE BY ME OR UNDER MY DIRECTION IN CONFORMANCE WITH THE REQUIREMENTS OF THE SUBDIVISION MAP ACT AT THE REQUEST OF AROL KING IN AUGUST 1966. I HEREBY CERTIFY THAT IT CONFORMS TO THE APPROVED TENTATIVE MAP AND THE CONDITIONS OF APPROVAL THEREOF, THAT ALL PROVISIONS OF APPLICABLE STATE LAW AND LOCAL ORDINANCES HAVE BEEN COMPLIED WITH.

*Gerald C. Henderson*  
GERALD C. HENDERSON L.S. 3297



### COUNTY ENGINEER'S CERTIFICATE

THIS MAP HAS BEEN EXAMINED FOR CONFORMANCE WITH THE REQUIREMENTS OF SECTION 11575 OF THE SUBDIVISION MAP ACT THIS 30<sup>TH</sup> DAY OF SEPTEMBER, 1966.

*Lawrence J. Brock*  
LAWRENCE J. BROCK RCE 13528

### RECORDER'S CERTIFICATE

FILED FOR RECORD THIS 30<sup>th</sup> DAY OF Sept, 1966 AT 11:20 AM IN BOOK 1 OF PARCEL MAPS AT PAGE 50 AT THE REQUEST OF GERALD C. HENDERSON RECORDING NO. 1742

FEE 5.00

*Ide Helen Growold*  
COUNTY RECORDER

RECOR PARCEL MAP  
A PORTION OF SECTIONS 4 & 9  
T. 23 N, R. 10E. M.D.B. & M.  
PLUMAS COUNTY, CALIFORNIA

### NOTES

THE BASIS OF BEARING IS THE SECTION LINE BETWEEN SECTIONS 4 & 9 AS PER RECORD OF SURVEY MAP RECORDED IN BOOK 3 OF RECORD OF SURVEYS AT PAGE 74 PLUMAS COUNTY, CALIFORNIA

TOTAL ACREAGE 4.76 ACRES  
PARCEL ACREAGE 0.61 ACRES

### LEGEND

FND 1/2" IP MARKED LS 3297  
FND 2" IP MARKED LS 3297

SURVEY OF THE LANDS OF  
JOHN EGBERT

SCALE 1" = 60'

SIERRA SURVEYING  
LICENSED LAND SURVEYOR'S  
P.O. BOX 13  
PORTOLA, CALIFORNIA