

SURVEYOR'S CERTIFICATE

THIS MAP WAS PREPARED BY ME OR UNDER MY DIRECTION AND WAS COMPILED FROM RECORD DATA IN CONFORMANCE WITH THE REQUIREMENTS OF THE SUBDIVISION MAP ACT AT THE REQUEST OF VIRGINIA H. GRIMES IN JUNE, 1966. I HEREBY CERTIFY THAT IT CONFORMS TO THE APPROVED TENTATIVE MAP AND THE CONDITIONS OF APPROVAL THEREOF; THAT ALL PROVISIONS OF APPLICABLE STATE LAW AND LOCAL ORDINANCES HAVE BEEN COMPLIED WITH.

Edward P. Norris
EDWARD P. NORRIS L.S. 2846

RECORDER'S CERTIFICATE

FILED FOR RECORD THIS 12th DAY OF September, 1966, AT 2:19 P.M. IN BOOK 1 OF PARCEL MAPS AT PAGE 48 AT THE REQUEST OF WALTER B. GRIMES. RECORDING NO. 1477

500
a=N80°08'57"W 106.27'
b=S16°55'58"W 124.30
c=S68°03'40"W 140.87
d=N60°58'52"W 503.80
e=S63°30'18"W 100.30
f=S36°14'48"W 237.36

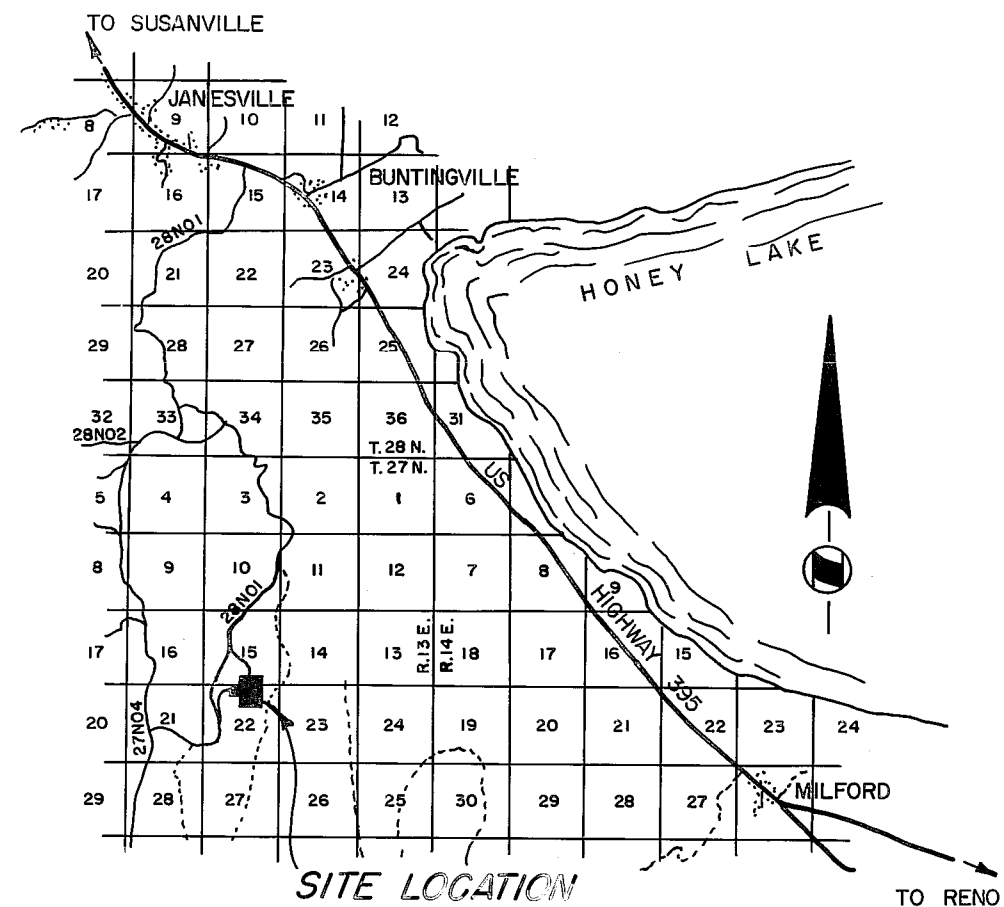
Walter B. Grimes
COUNTY RECORDER

BY _____
DEPUTY

COUNTY ENGINEER'S CERTIFICATE

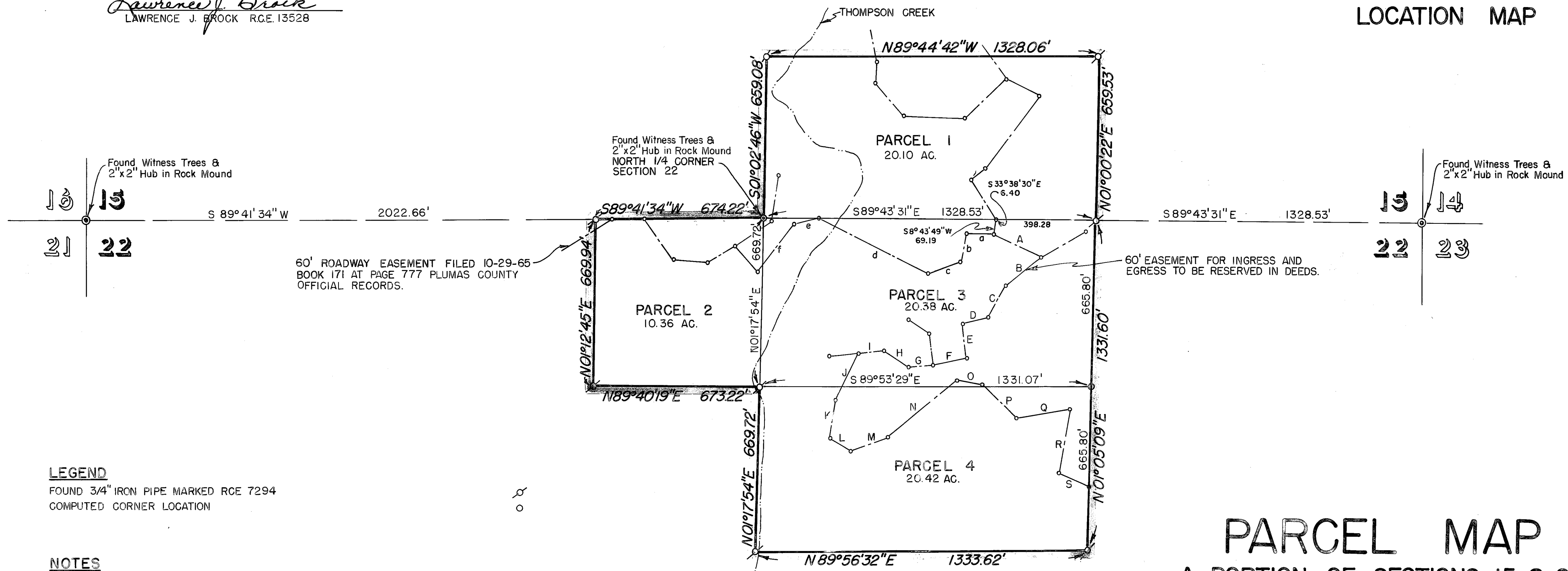
THIS MAP HAS BEEN EXAMINED FOR CONFORMANCE WITH THE REQUIREMENTS OF SECTION 11575 OF THE SUBDIVISION MAP ACT THIS 12th DAY OF SEPTEMBER, 1966.

Lawrence J. Brock
LAWRENCE J. BROCK R.C.E. 13528



SCALE 1"=2 1/2 MILES

LOCATION MAP



LEGEND

FOUND 3/4" IRON PIPE MARKED RCE 7294
COMPUTED CORNER LOCATION

NOTES

THE BASIS OF BEARING IS THE NORTH LINE OF THE NORTHEAST 1/4 OF SECTION 22 GIVEN AS S89°43'31"E ON THAT CERTAIN RECORD OF SURVEY MAP FILED IN THE OFFICE OF THE RECORDER OF THE COUNTY OF PLUMAS, STATE OF CALIFORNIA, IN BOOK 3, PAGE 68, OF RECORD OF SURVEYS, RECORDING NO. 4534.

TOTAL ACREAGE 71.26 AC.

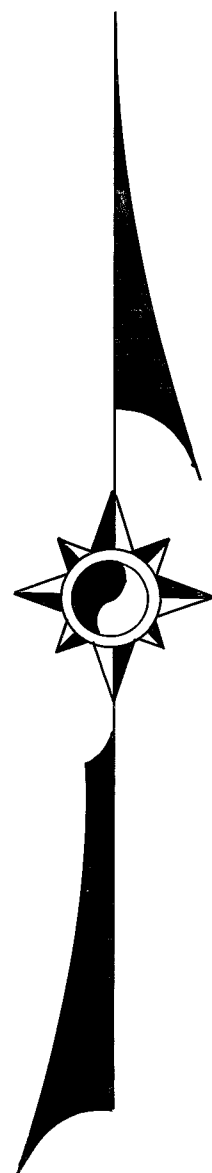
EASEMENT TRAVERSE

A = S 65° 12' 13" E 207.06'	K = S 07° 53' 21" W 156.98'
B = S 54° 14' 49" W 186.07'	L = S 63° 48' 26" E 96.53'
C = S 27° 09' 22" W 140.26'	M = N 69° 17' 56" E 154.05'
D = S 79° 08' 25" W 105.21'	N = N 50° 40' 28" E 362.67'
E = S 09° 36' 31" E 151.08'	O = S 81° 05' 10" E 106.09'
F = S 82° 25' 02" W 138.75'	P = S 42° 39' 53" E 191.67'
G = S 82° 25' 02" W 97.36'	Q = N 79° 03' 49" E 233.76'
H = N 57° 30' 50" W 117.90'	R = S 14° 39' 22" W 269.60'
I = S 83° 38' 52" W 105.74'	S = S 65° 49' 57" E 151.01'
J = S 25° 33' 56" W 212.03'	

PARCEL MAP
A PORTION OF SECTIONS 15 & 22,
T. 27N., R. 13E., M.D.B.&M.
PLUMAS COUNTY, CALIFORNIA

MAP OF THE LANDS OF
VIRGINIA H. GRIMES
SCALE 1"=300' JUNE, 1966

WALTER B. GRIMES & ASSOCIATES
CIVIL ENGINEERS & LAND SURVEYORS
1338 MANGROVE AVENUE, CHICO, CALIFORNIA



1/24/68