

NOTES
 THE BASIS OF BEARING IS THE NORTH LINE OF THE NORTHWEST 1/4 OF SECTION 22 GIVEN AS S89°41'34\"/>

LEGEND
 SET 3/4\"/>

SURVEYOR'S CERTIFICATE
 THIS MAP WAS PREPARED BY ME OR UNDER MY DIRECTION AND WAS COMPILED FROM RECORD DATA IN CONFORMANCE WITH THE REQUIREMENTS OF THE SUBDIVISION MAP ACT AT THE REQUEST OF JOSEPHINE JOHNSON IN APRIL, 1966. I HEREBY CERTIFY THAT IT CONFORMS TO THE APPROVED TENTATIVE MAP AND THE CONDITIONS OF APPROVAL THEREOF; THAT ALL PROVISIONS OF APPLICABLE STATE LAW AND LOCAL ORDINANCES HAVE BEEN COMPLIED WITH.

Edward P. Norris
 EDWARD P. NORRIS L.S. 2846

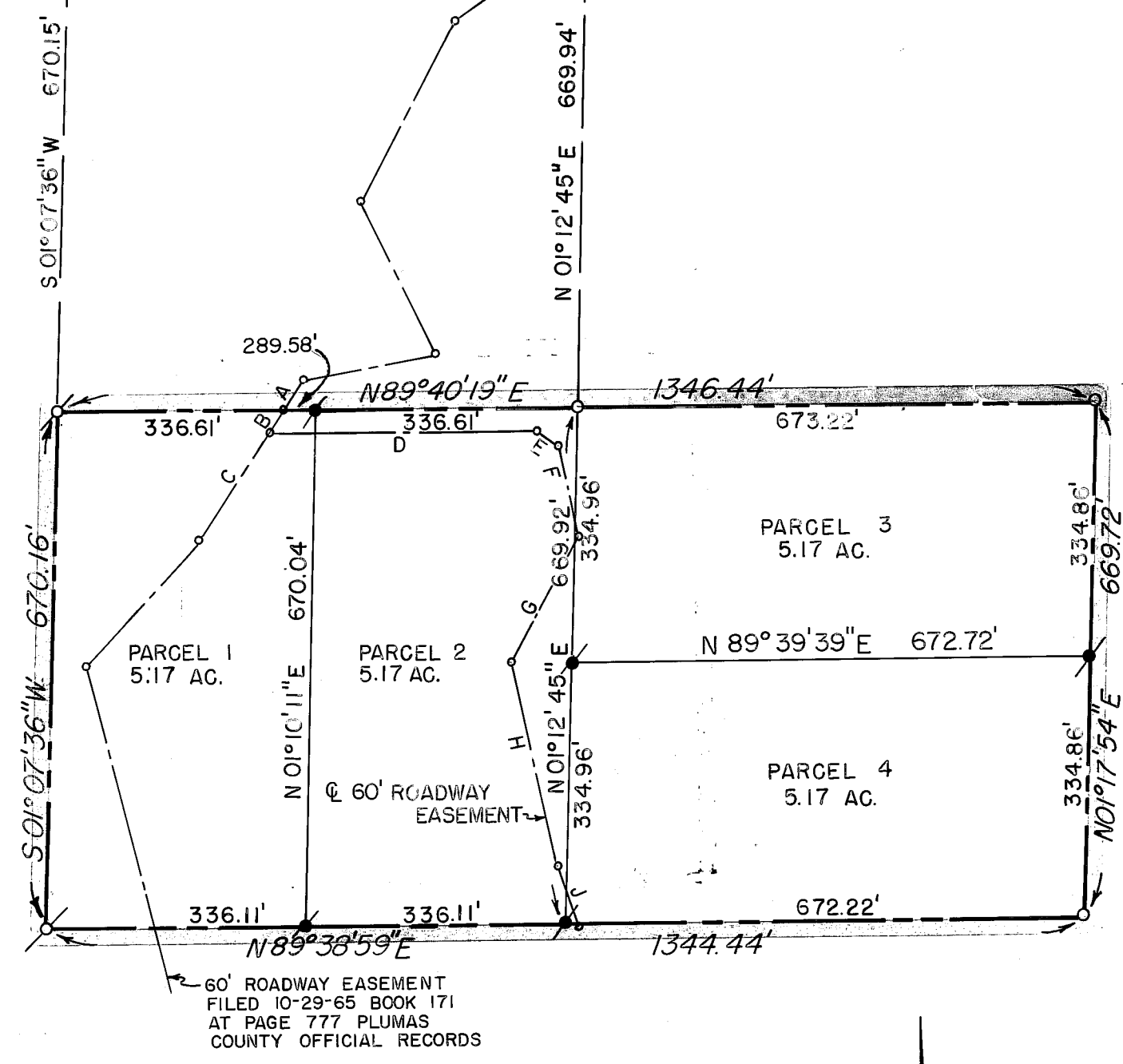
COUNTY ENGINEER'S CERTIFICATE
 THIS MAP HAS BEEN EXAMINED FOR CONFORMANCE WITH THE REQUIREMENTS OF SECTION 11575 OF THE SUBDIVISION MAP ACT THIS 29th DAY OF August, 1966.

Lawrence J. Brock
 LAWRENCE J. BROCK R.C.E. 13528

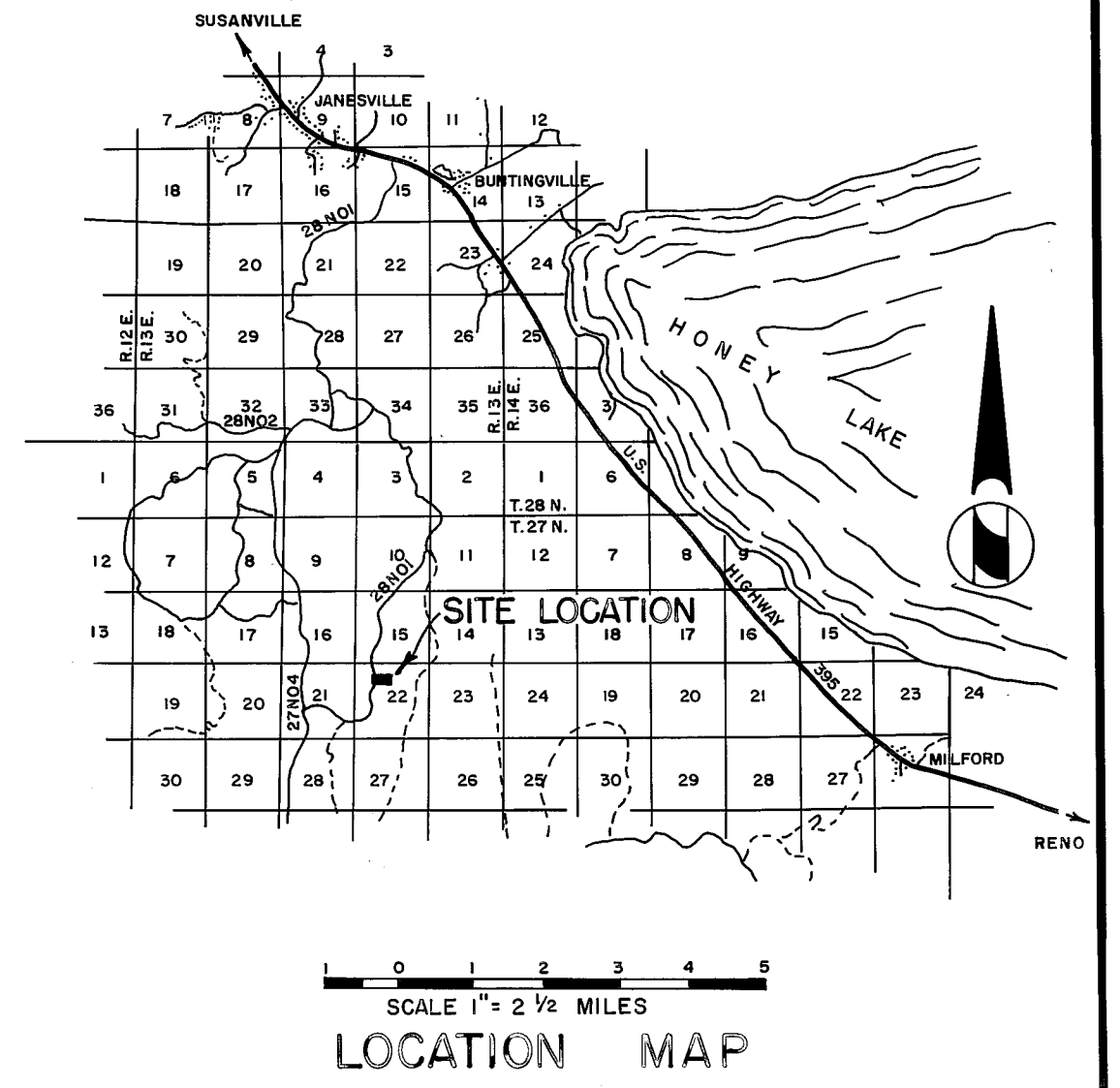
RECORDER'S CERTIFICATE
 FILED FOR RECORD THIS 22nd DAY OF Sept, 1966, AT 2:17 P.M. IN BOOK 1 OF PARCEL MAPS AT PAGE 46 AT THE REQUEST OF WALTER B. GRIMES. RECORDING NO. 1475

W. Hogan Gronwald
 COUNTY RECORDER

BY _____
 DEPUTY



A-S 32°44'39\"/>



PARCEL MAP
 THE SOUTH 1/2 OF THE N.E. 1/4 OF THE N.W. 1/4
 OF SEC. 22, T.27N., R.13E., M.D.B.&M.
 PLUMAS COUNTY, CALIFORNIA

MAP OF THE LANDS OF
 JOSEPHINE JOHNSON
 SCALE 1" = 200'
 APRIL, 1966
 WALTER B. GRIMES & ASSOCIATES
 CIVIL ENGINEERS & LAND SURVEYORS
 1338 MANGROVE AVENUE, CHICO, CALIFORNIA