

SURVEYOR'S CERTIFICATE:

This map was prepared by me or under my direction and is based upon a field survey in conformance with the requirements of the Subdivision Map Act at the request of Russel Novotny in April, 1966. I hereby certify that it conforms to the approved tentative map and the conditions of approval thereof; that all provisions of applicable State law and local ordinances have been complied with.

A. Vandenberg
A. VANDENBERG, Reg. Civil Engr. 7567

COUNTY SURVEYOR'S CERTIFICATE:

This map has been examined this 10th day of May, 1966, for conformance with the requirements of Section 11575 of the Subdivision Map Act.

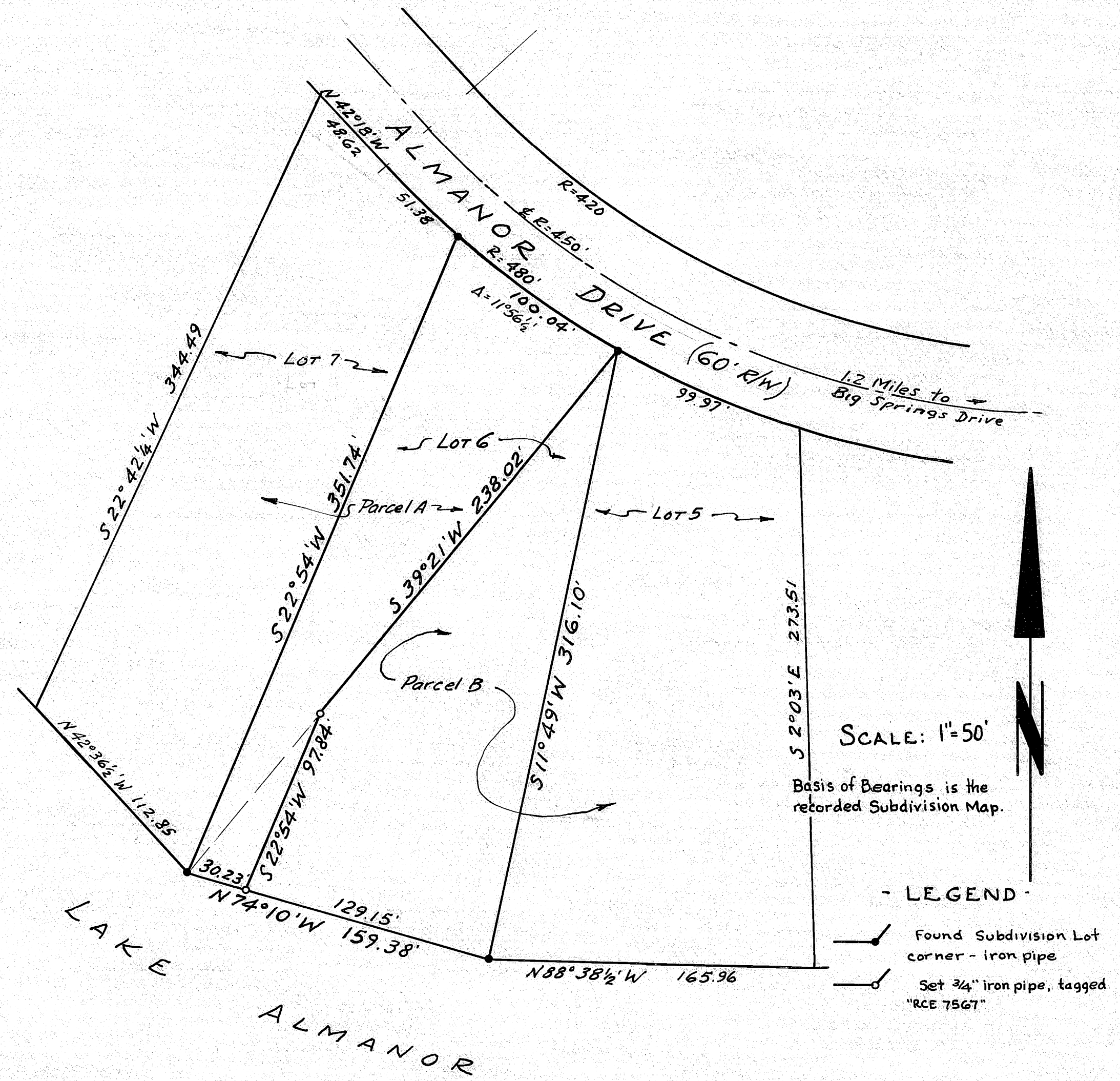
James F. Flanagan
James F. Flanagan, R.C.E. 292
Plumas County Surveyor

COUNTY RECORDER'S CERTIFICATE:

Filed for Record this 10th day of May, 1966, at 4:30 p.m. in Book 1 of Parcels at Page 21 at the request of A. Vandenberg

Fee: \$5.00
File No. 4283

Ida Hogan Gronwald
Ida Hogan Gronwald
Plumas County Recorder



PARCEL MAP FOR
RUSSEL NOVOTNY
LOT 6, BLOCK 5
LAKE ALMANOR PENINSULA UNIT 2
PLUMAS COUNTY, CALIFORNIA
SCALE: 1"=50'

VANDENBERG & SIMPSON, ENGINEERS & SURVEYORS
Susanville, California