

PARCEL MAP

A portion of Section 24, T.25 N. R.8 E., M.D.M.
 Basis of Bearings is the west line of Sec. 24,
 taken from four 6"x 6" Concrete monuments on
 the west side of said Sec. 24.

LEGEND

- Indicates 6"x 6" Concrete monument foundation
- Indicates 1/2"x 18" pipe set, tag #2702

SURVEYOR'S CERTIFICATE

This map was prepared by me or under my direction (and is based upon a field survey) in conformance with the requirements of the Subdivision Map Act at the request of Mark Porter April 24, 1966. I hereby certify that it conforms to the approved tentative map and the conditions of approval thereof; that all provisions of applicable state law and local ordinances have been complied with.

Marcus J. McBeen sr.
 Marcus J. McBeen sr. L.S. #2702

COUNTY SURVEYOR'S CERTIFICATE

This map has been examined this 9th day of May, 1966 for conformance with the requirements of Section 11575 of the Subdivision Map Act.

James F. Flanagan
 James F. Flanagan
 Plumas County Surveyor

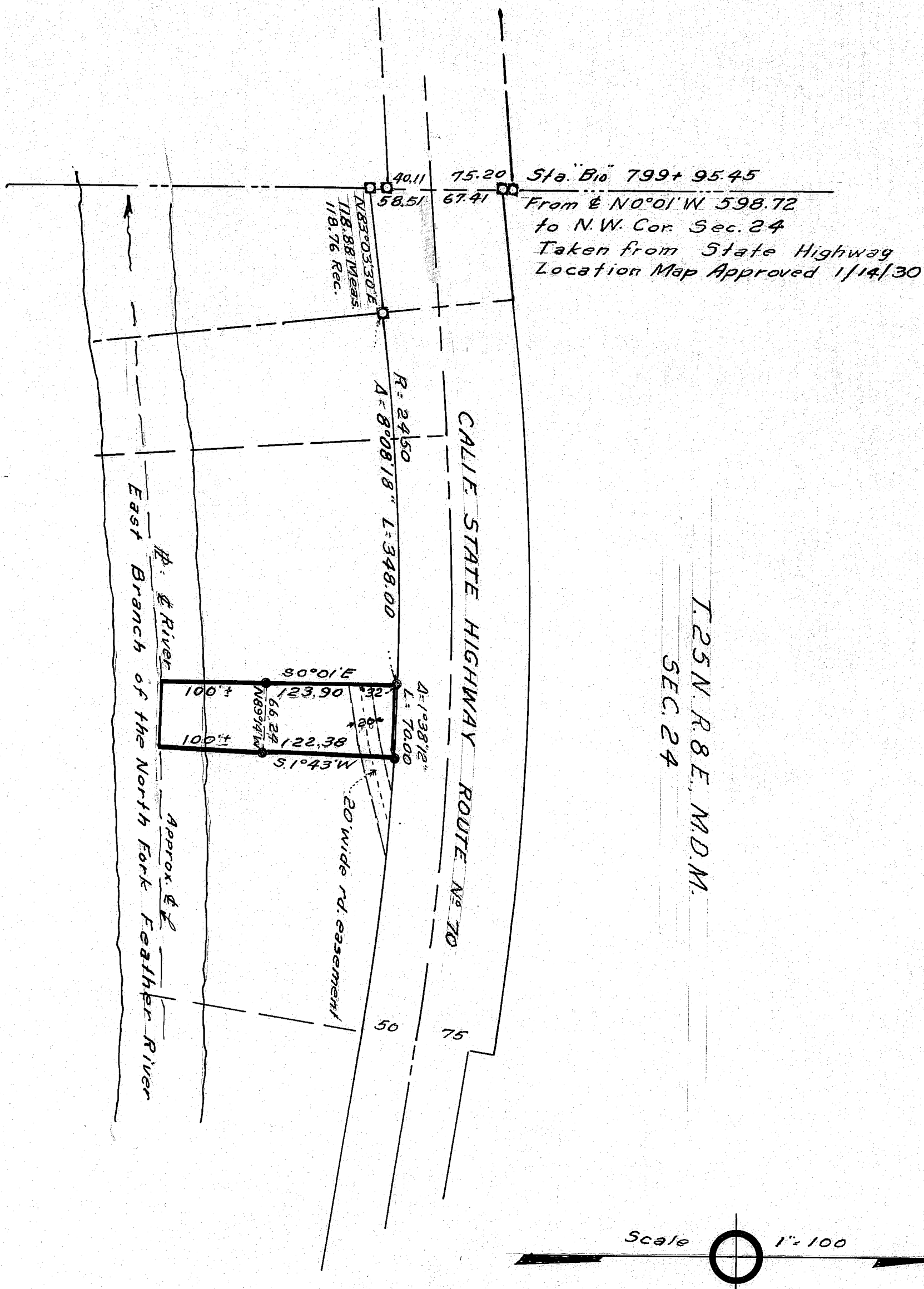
No. 4261

RECORDER'S CERTIFICATE

Filed for record this 9th day of May 1966, at 2:06 P.M. in Book 1 of Parcel Maps at Page 20 at the request of Marcus J. McBeen.

5 00

Ida Hogan Gronvold
 Ida Hogan Gronvold
 Plumas County Recorder



12m 22

20