

SURVEYOR'S CERTIFICATE:

This map was prepared by me or under my direction and is based upon a field survey in conformance with the requirements of the Subdivision Map Act at the request of Gerald Radvich in November, 1965.
I hereby certify that it conforms to the approved tentative map and the conditions of approval thereof; that all provisions of applicable State law and local ordinances have been complied with.

A.J. Vandenberg
A.J. Vandenberg
Reg. Civil Engineer No. 7567

COUNTY SURVEYOR'S CERTIFICATE:

This map has been examined this 12th day of January, 1966, for conformance with the requirements of Section 11575 of the Subdivision Map Act.

James F. Flanagan
James F. Flanagan, R.C.E. 292
Plumas County Surveyor

COUNTY RECORDER'S CERTIFICATE:

Filed for Record this 12th day of January, 1966, at 2:51 P.m. in Book 1 of PARCEL MAPS at Page 11 at the request of Gerald Radvich

Fee: \$5.00
File No. 3171

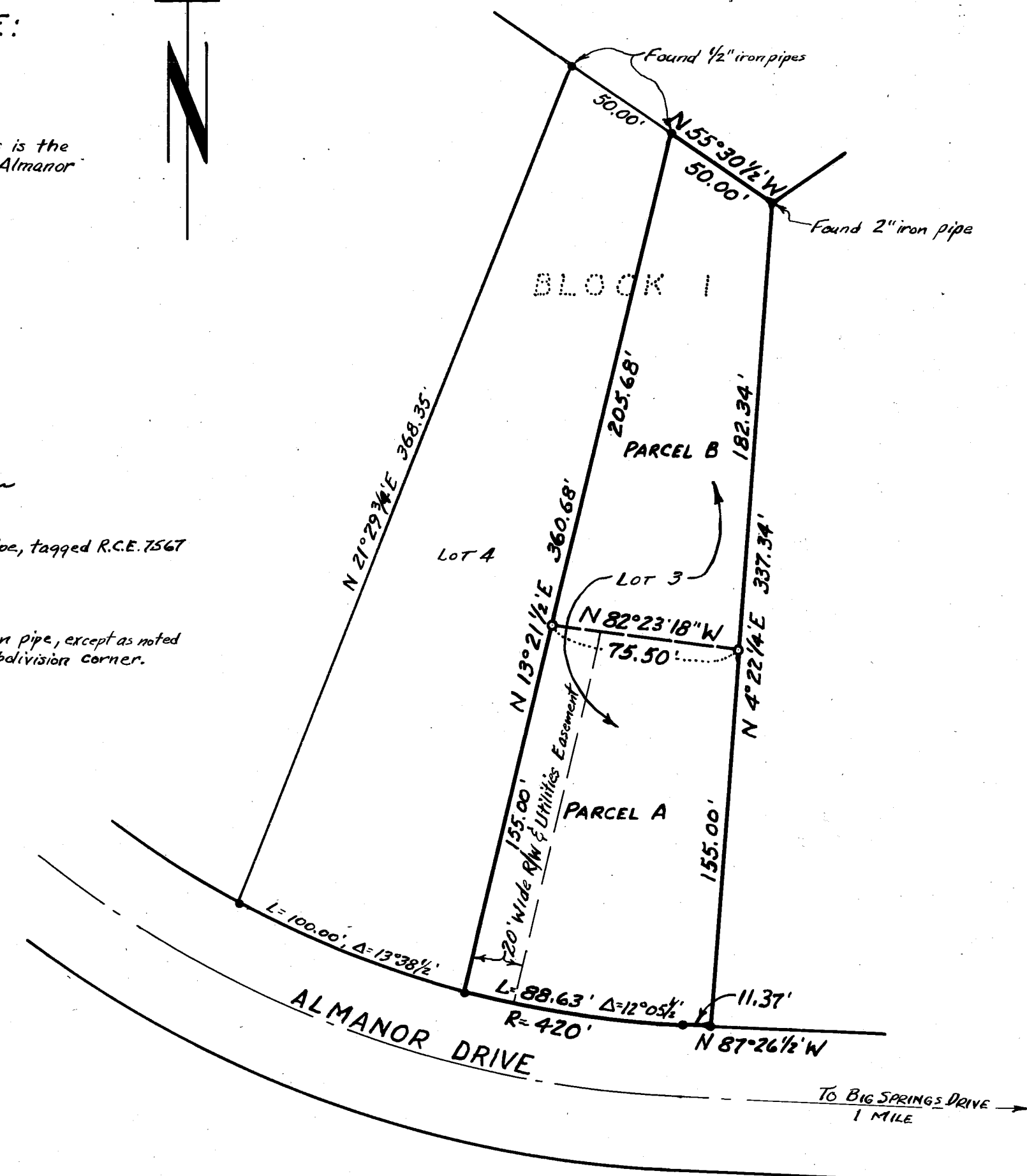
Ida Hogan Gronvold
Ida Hogan Gronvold
Plumas County Recorder.

SCALE:
1" = 50'

Basis of Bearings is the
recorded map of Lake Almanor
Peninsula Unit 2

~ LEGEND ~

- Set 3/4" iron pipe, tagged R.C.E. 7567
- Found 3/4" iron pipe, except as noted for original subdivision corner.



PARCEL MAP FOR

HELEN RADVICH

LOT 3, BLOCK 1, LAKE ALMANOR PENINSULA UNIT 2
PLUMAS COUNTY, CALIFORNIA

SCALE: 1" = 50'

VANDENBERG & SIMPSON - ENGINEERS & SURVEYORS
SUSANVILLE, CALIFORNIA

10711