

SURVEYOR'S CERTIFICATE:

This map was prepared by me or under my direction and is based upon a field survey in conformance with the requirements of the Subdivision Map Act at the request of Cal Sierra Title Group in June, 1965. I hereby certify that it conforms to the approved tentative map and the conditions of approval thereof; that all provisions of applicable State law and local ordinances have been complied with.

A.J. Vandenberg
A.J. Vandenberg
Reg. Civil Engineer No. 7567

COUNTY SURVEYOR'S CERTIFICATE:

This map has been examined this 12th day of January, 1966, for conformance with the requirements of Section 11575 of the Subdivision Map Act.

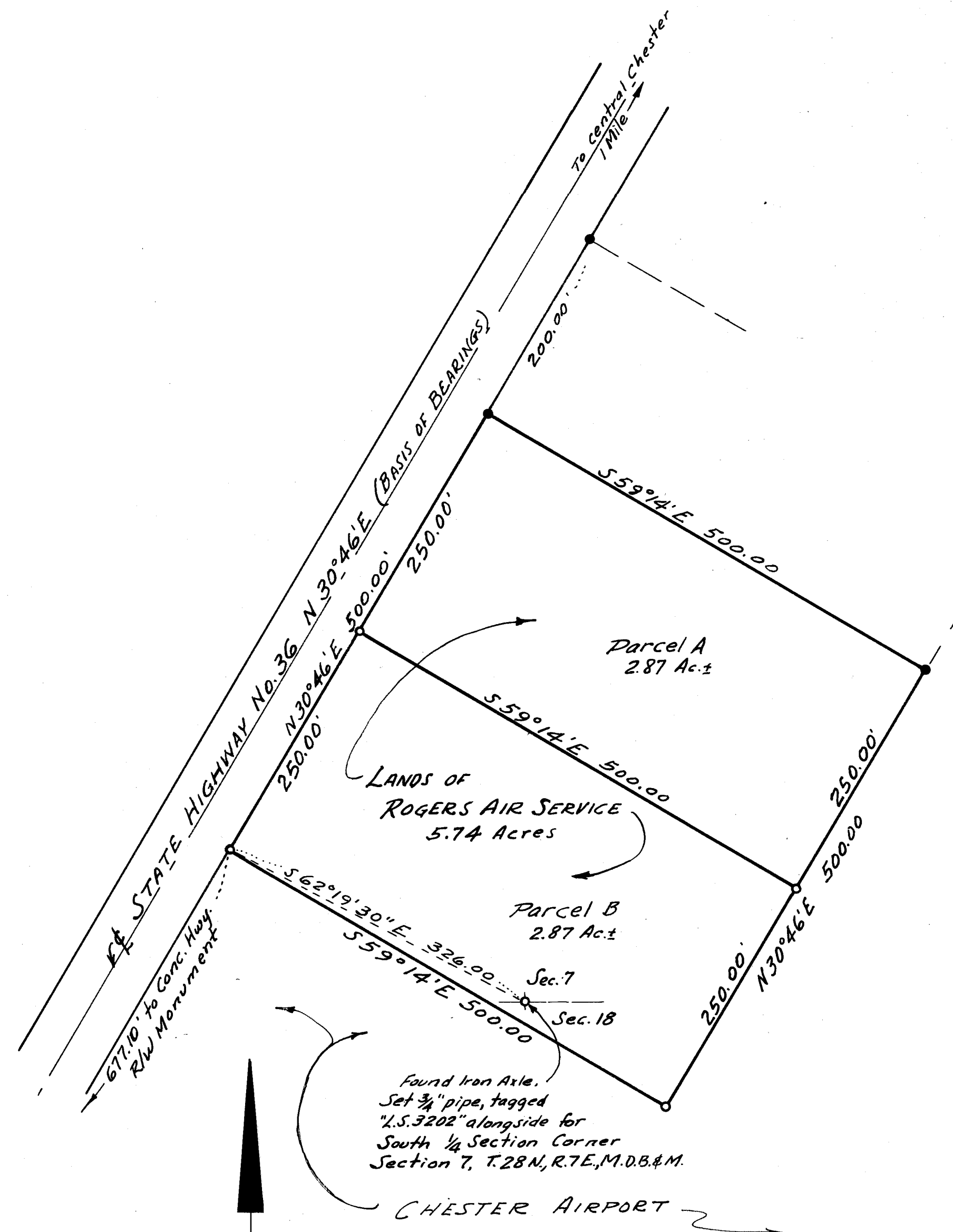
James F. Flanagan
James F. Flanagan, R.C.E. 292
Plumas County Surveyor

COUNTY RECORDER'S CERTIFICATE:

Filed for Record this 12th day of January, 1966, at 2:47 P.M. in Book 1 of PARCEL MAPS at Page 7 at the request of Paul Simpson.

Fee: \$5.00
File No. 3167

Ida Hogan Gronvold
Ida Hogan Gronvold
Plumas County Recorder.



- LEGEND -

- Found 1" dia. pipe tagged "L.S. 2322"
- Set 3/4" dia. pipe tagged "L.S. 3202"

Scale:
1"=100'

Basis of Bearings is the record bearing as shown for the State Highway.

PARCEL MAP FOR
ROGERS AIR SERVICE
IN SECTIONS 7 & 18, T. 28N., R. 7E., M.D.B. & M.
NEAR THE TOWN OF CHESTER
PLUMAS COUNTY, CALIF.

SCALE: 1"=100'

VANDENBERG & SIMPSON - ENGINEERS & SURVEYORS