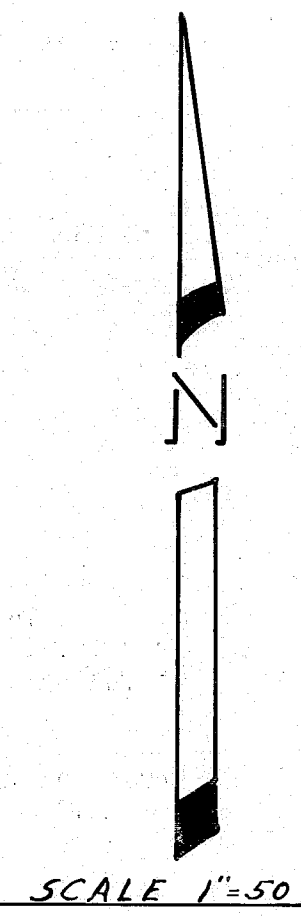
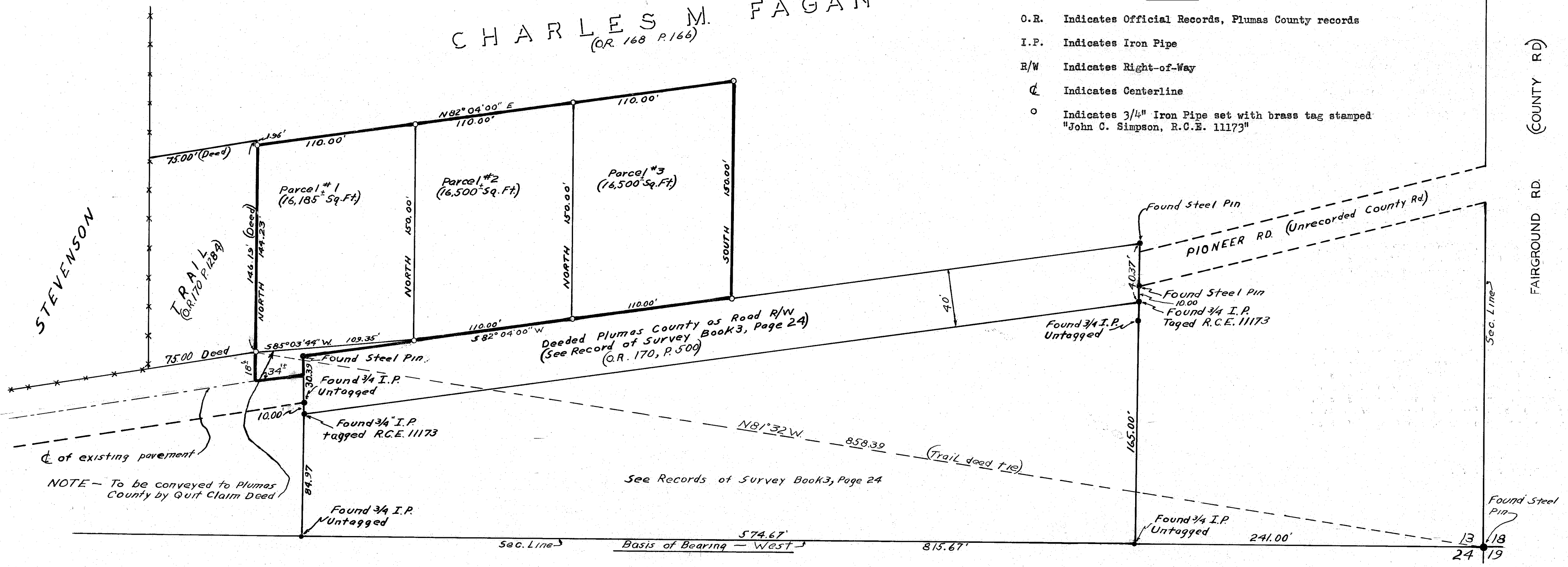


CHARLES M. FAGAN  
(OR 168 P.166)

- LEGEND**
- O.R. Indicates Official Records, Plumas County records
  - I.P. Indicates Iron Pipe
  - R/W Indicates Right-of-Way
  - ⊕ Indicates Centerline
  - Indicates 3/4" Iron Pipe set with brass tag stamped "John C. Simpson, R.C.E. 11173"



3135

**RECORDER'S CERTIFICATE**

Filed for record this 11<sup>th</sup> day of January, 1966, at 9:55 A.M. in Book 1 of Parcel Maps at Page 4 at the request of John C. Simpson.

*Ide Hogan Gronvold*  
Ide Hogan Gronvold  
Plumas County Recorder

**COUNTY SURVEYOR'S CERTIFICATE**

This map has been examined this 11<sup>th</sup> day of January, 1966, for conformance with the requirements of Section 11575 of the Subdivision Map Act.

*James F. Flanagan*  
James F. Flanagan  
R.C.E. No. 292  
Plumas County Surveyor

**SURVEYOR'S CERTIFICATE**

This map was prepared by me or under my direction (and is based upon a field survey) in conformance with the requirements of the Subdivision Map Act at the request of Charles M. Fagan December 10 to 19, 1965. I hereby certify that it conforms to the approved tentative map and the conditions of approval thereof; that all provisions of applicable state law and local ordinances have been complied with.

*John C. Simpson*  
John C. Simpson  
R.C.E. No. 11173



**PARCEL MAP**  
OF  
SUBDIVISION OF THREE PARCELS  
WITHIN  
SE. 1/4, S.E. 1/4, SEC. 13, T. 24 N., R. 9 E. (M.D.M.)  
PLUMAS-COUNTY-CALIFORNIA

OWNER-CHARLES M. FAGAN  
QUINCY, CALIFORNIA

JOHN C. SIMPSON P.E.  
CIVIL ENGINEER  
QUINCY, CALIFORNIA

Fee \$5.00  
File No.

1pm 4