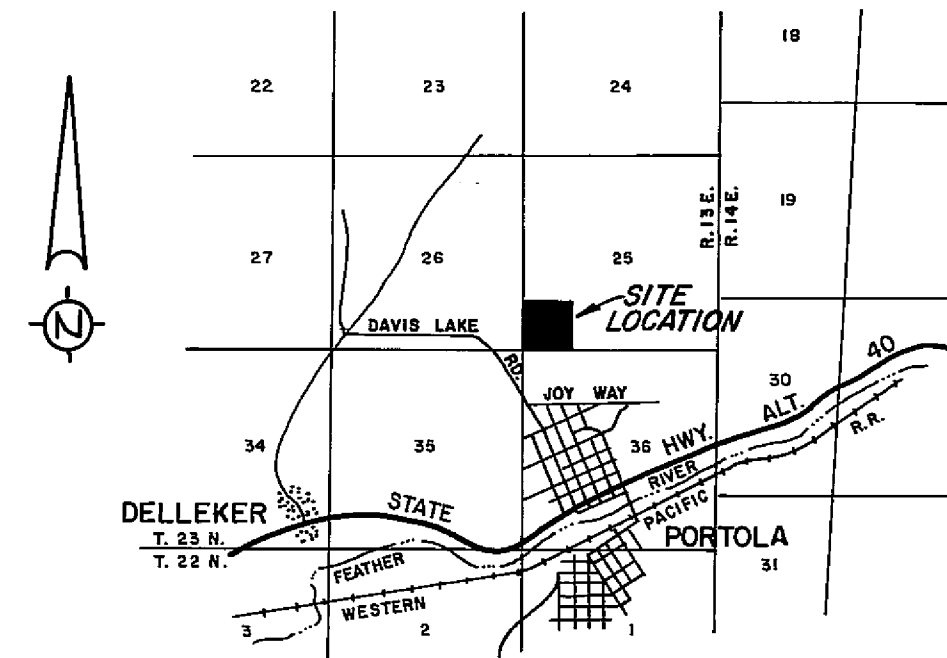
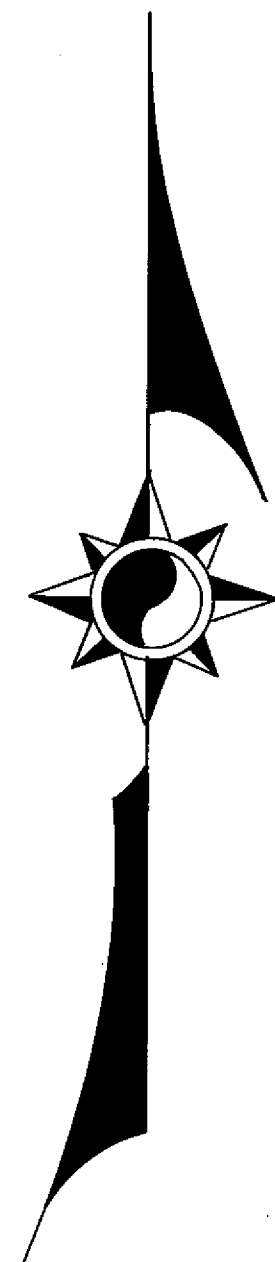
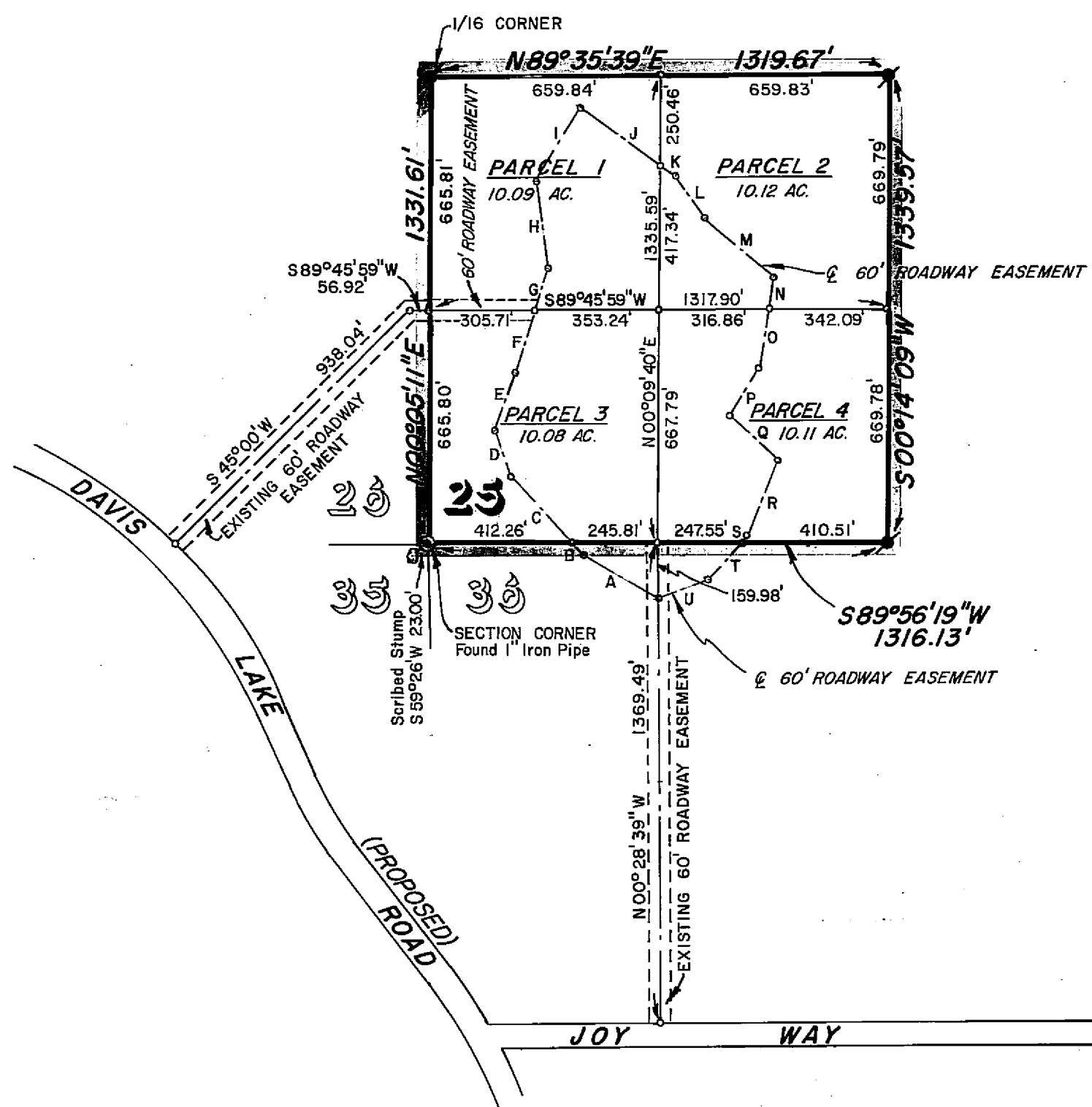


60' ROADWAY EASEMENT

"A"	N 59°56'35"W	247.40'
"B"	N 42°40'42"W	48.70'
"C"	N 42°40'42"W	260.02'
"D"	N 19°18'10"W	135.23'
"E"	N 19°33'14"E	173.19'
"F"	N 17°17'06"E	193.34'
"G"	N 17°17'06"E	119.04'
"H"	N 07°38'56"W	250.85'
"I"	N 30°41'31"E	250.53'
"J"	S 54°42'36"E	275.11'
"K"	S 54°42'36"E	61.17'
"L"	S 35°02'53"E	147.29'
"M"	S 49°59'20"E	255.89'
"N"	S 08°48'35"W	96.75'
"O"	S 08°48'35"W	166.19'
"P"	S 31°49'24"W	154.78'
"Q"	S 46°49'20"E	188.27'
"R"	S 21°40'34"W	253.87'
"S"	S 42°32'46"W	11.31'
"T"	S 42°32'46"W	146.49'
"U"	S 70°25'50"W	156.18'



LOCATION MAP
SCALE: 1"=1 Mile

LEGEND

- FOUND 3/4" IRON PIPE MARKED RCE 7294 AS INDICATED ON R/S MAP, BOOK 3, PAGE 88
- COMPUTED CORNER LOCATION

NOTES

THE BASIS OF BEARING IS THE WEST LINE OF THE S.W. 1/4 OF SECTION 25, T.23N., R.13E., M.D.B. & M., GIVEN AS N00°05'11"E ON THAT CERTAIN RECORD OF SURVEY MAP FILED MAY 31, 1967, IN BOOK 3 OF RECORD OF SURVEYS AT PAGE 88, RECORDING NO. 3890, IN THE OFFICIAL RECORDS OF THE COUNTY OF PLUMAS, STATE OF CALIFORNIA.

TOTAL ACREAGE 40.40 AC.

SURVEYOR'S CERTIFICATE

THIS MAP WAS PREPARED BY ME OR UNDER MY DIRECTION AND WAS COMPILED FROM RECORD DATA IN CONFORMANCE WITH THE REQUIREMENTS OF THE SUBDIVISION MAP ACT AT THE REQUEST OF BRUCE O. VANCE IN AUGUST, 1967. I HEREBY CERTIFY THAT IT CONFORMS TO THE APPROVED TENTATIVE MAP AND THE CONDITIONS OF APPROVAL THEREOF, AND THAT ALL PROVISIONS OF APPLICABLE STATE LAW AND LOCAL ORDINANCES HAVE BEEN COMPLIED WITH.

Edward P. Morris
EDWARD P. MORRIS, L.S. 2846

RECORDER'S CERTIFICATE

FILED FOR RECORD THIS 13th DAY OF October, 1967,
AT 11:56 A.M. IN BOOK 1 OF PARCEL MAPS AT PAGE 95 AT
THE REQUEST OF WALTER B. GRIMES. RECORDING NO. 1799

FEE \$500

Walter B. Grimes
COUNTY RECORDER

BY _____
DEPUTY

COUNTY ENGINEER'S CERTIFICATE

THIS MAP HAS BEEN EXAMINED FOR CONFORMANCE WITH THE REQUIREMENTS OF SECTION 11575 OF THE SUBDIVISION MAP ACT THIS 11th DAY OF October, 1967.

Lawrence J. Brock
LAWRENCE J. BROCK, R.C.E. 13528

PARCEL MAP
THE S.W. 1/4 OF THE S.W. 1/4 OF
SECTION 25, T.23N., R.13E., M.D.B. & M.
PLUMAS COUNTY, CALIFORNIA

MAP OF THE LANDS OF
CHESTER L. & CARRIE M. VANCE
AND LELAND B. JONES

SCALE: 1"=400' AUGUST, 1967

WALTER B. GRIMES
CIVIL ENGINEERS & LAND SURVEYORS
1356 MANGROVE AVENUE, CHICO, CALIFORNIA