

RESOLUTION NO. 21- 8606

REVISING THE FEE SCHEDULE FOR RESIDENTIAL AND COMMERCIAL CUSTOMERS SELF-HAULING SOLID WASTE TO PLUMAS COUNTY TRANSFER STATIONS IN FRANCHISE SERVICE AREA NO. 1 (OPERATED BY FEATHER RIVER DISPOSAL)

WHEREAS, the Plumas County Board of Supervisors, on June 16, 2020, did adopt replacement Resolution No. 20-8498, thus establishing a revised fee schedule for residential and commercial customers self-hauling to Plumas County Transfer Stations in Franchise Service Area No. 1, pursuant to Plumas County Code Section 6-10.208, and

WHEREAS, the request of USA Waste of California doing business as Feather River Disposal for a rate increase was considered at the duly noticed public hearing held on July 20, 2021, and

WHEREAS, it is the conclusion of the Board of Supervisors, based on the evidence presented at the public hearing, that the franchisee for Service Area No. 1 is entitled to rate increases to the fee schedule that is presently in place pursuant to Plumas County Resolution No. 20-8498

NOW, THEREFORE, BE IT RESOLVED by the Board of Supervisors of the County of Plumas that, pursuant to Plumas County Code Section 6-10.208, this Board revises the existing fee schedule, set by Resolution No. 20-8498, for collection, transfer and related solid waste services in Franchise Service Area No. 1, as follows:

- (a) **General.** For purposes of this section "franchisee" shall refer to a solid waste collector as defined in Chapter 10 of Title 6 of the Plumas County Code of Ordinances. The fees below apply to only Franchise Service Area No. 1, as defined in the County Solid Waste Management Plan, currently serviced by Feather River Disposal.
- (b) **Fees for unloading at transfer sites or landfills.** The following fees, as described below and shown as "Adjusted Rate" on the attached Exhibit "A", shall be collected from the public for unloading at transfer sites or landfills, and such fees shall be the franchisee's sole compensation for the handling, transfer, hauling, and ultimate disposal activities.
 - (1) **Minimum fee.** The minimum fee for unloading shall be \$9.40; for the equivalent of two (2) cans or standard containers the fee shall be \$9.40; for the equivalent of three (3) cans the fee shall be \$14.95; and the fee shall be \$19.60 for the equivalent of four (4) cans.
 - (2) **Vehicle unloading fee.** When waste is unloaded from vehicles and such waste exceeds an amount equivalent of four (4) cans or standard containers, then the following charges shall apply on the basis of vehicle size and type:
 - (A) Station wagon: \$20.35
 - (B) Compact pickup truck: \$25.30
 - (C) Compact pickup truck with sideboards: \$32.35
 - (D) Standard – sized pickup truck: \$30.90
 - (E) Standard – sized pickup truck with sideboards: \$38.65

(F) Larger trucks: \$21.80 per cubic yard maximum.

(3) **Fee for unloading large and restricted items.** Unusually large items increase the time and effort of disposal, and the following charges apply:

- (A) A washer or dryer, standard size refrigerator, single bed mattress, or similar-size object: \$17.50;
- (B) A standard size deep freezer, double bed mattress, or similar-size object: \$31.70 maximum;
- (C) Each tire sixteen (16") inches or less: \$3.90; Each tire greater than sixteen (16") inches to twenty (20") inches: \$7.85; Each tire greater than twenty (20") inches: \$17.40
- (D) Tree stumps are not accepted at transfer stations or at the Chester Landfill.
- (E) Other large items not included in this section shall be charged pursuant to subsection (c) of this section.

(4) **Compacted loads.** Compacted loads shall be permitted only at transfer sites, and only if the hauler weighs the truck before and after tipping at the site. Compacted loads shall be charged at the rate of \$101.45 per ton.

(5) **Prohibited items.** None of the following items shall be permitted by the franchisee to be unloaded at transfer sites: dead animals, car bodies, tree stumps, explosives, toxic chemicals or any hazardous waste materials; except that household hazardous waste items may be accepted at designated transfer stations during the date and times set aside for special household hazardous waste disposal days as duly advertised by the County and the franchisee. Freon or other hazardous gases shall be removed from refrigerators and freezers prior to disposal.

(c) **Fees for extra services.** Services for which no fee is specified in this resolution shall be considered extra services by the franchisee, and the charges for such services shall be negotiated by the franchisee and the customer.

(d) **Rounding.** The preceding fees have been rounded to the nearest \$0.05 after adjustment.

The foregoing resolution was duly passed and adopted by the Board of Supervisors of the County of Plumas, State of California, at a regular meeting of said Board held on the 20th day of July 2021, by the following vote:

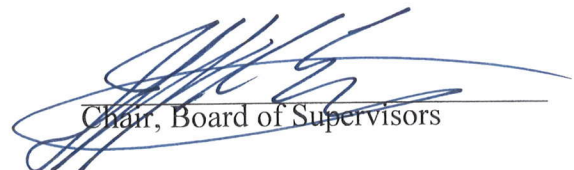
AYES: Supervisors: Goss, Thrall, Ceresola , and Engel

NOES: Supervisors: None

ABSTAIN: Supervisors: None

ATTEST:


Clerk of the Board of Supervisors

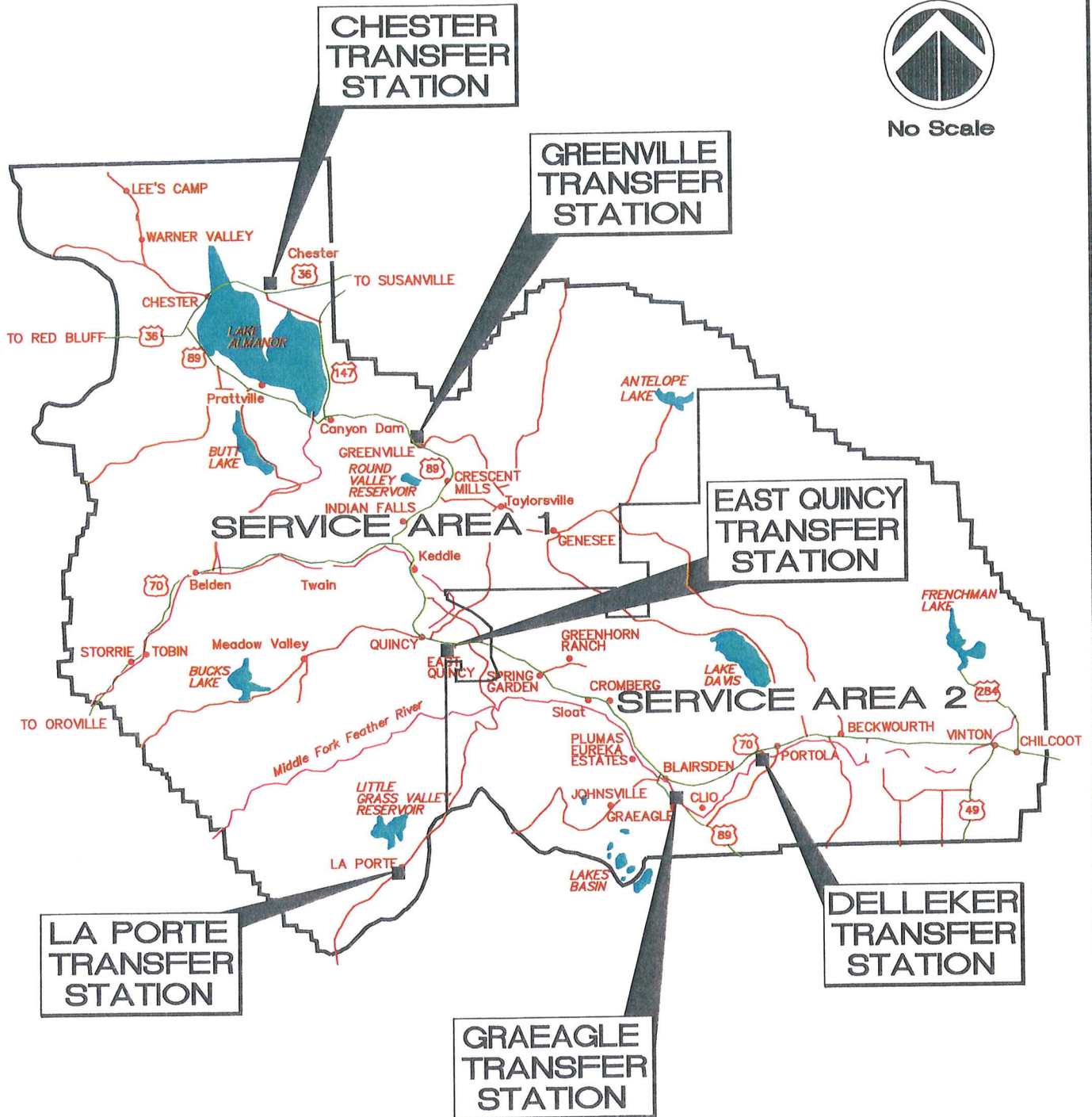

Chair, Board of Supervisors

ATTACHMENT B-1

NORTH



No Scale



PLUMAS COUNTY MAP SHOWING SOLID WASTE FRANCHISE SERVICE AREAS AND CURRENT TRANSFER STATIONS

May, 2012

PLUMAS CO. DPW

TABLE 1 -FEATHER RIVER DISPOSAL: FEE SCHEDULE FOR COLLECTION, TRANSFER AND RELATED SOLID WASTE SERVICES - TRANSFER STATIONS
Comparison of Rates:
(1) Current Rate as of June 2020
(2) Combined Rate Adjustment: 2020 RRI Adjustment: +2.46%, Franchise Fee Adjustment: +2.50%, Legal Action Settlement Adjustment: +2.33%. Total 2021 Combined Rate Adjustment: +7.29%*

Containers/Vehicles/Item(s)	Current Rates	Adjusted Rate
Container Unloading Fees		
Minimum unloading fee	\$8.78	\$9.40
Two cans or standard containers	\$8.78	\$9.40
Three cans or standard containers	\$13.94	\$14.95
Four cans or standard containers	\$18.29	\$19.60
Vehicle Unloading Fees		
Station Wagon	\$18.98	\$20.35
Compact Truck	\$23.57	\$25.30
Compact Truck with Side Boards	\$30.15	\$32.35
Standard Size Pickup Truck	\$28.80	\$30.90
Standard Size Pickup Truck with Side Boards	\$36.03	\$38.65
Larger Trucks (per CY)	\$20.33	\$21.80
Large and Restricted Items		
Small Appliances: Washer, dryer, standard fridge, etc.	\$16.33	\$17.50
Large Appliances: Deep freezer, etc.	\$29.53	\$31.70
Tires (rim diameter)		
16 inches or less	\$3.63	\$3.90
Greater than 16 inches to 20 inches	\$7.30	\$7.85
Greater than 20 inches	\$16.21	\$17.40
Mattresses		
Twin/full	\$16.33	\$17.50
Queen/king	\$29.53	\$31.70
TVs/ Computer Monitors	\$3.87	\$4.15
Compacted Loads (per ton)	\$94.57	\$101.45

Adjusted Rates rounded to nearest \$0.05