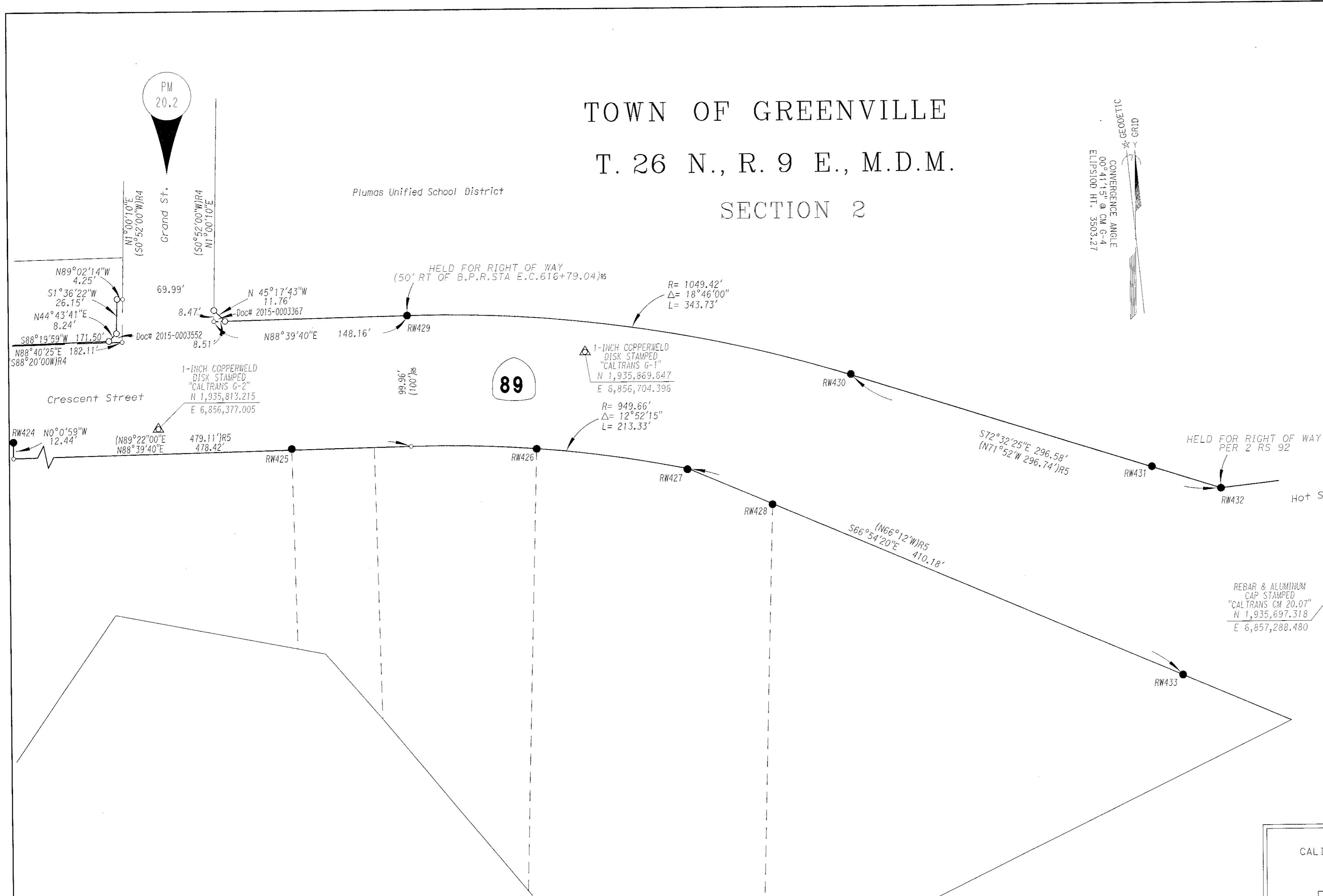


TOWN OF GREENVILLE  
T. 26 N., R. 9 E., M.D.M.  
SECTION 2

**LEGEND**

- SET 3/4" REBAR WITH ALUMINUM CAP STAMPED "CALTRANS"
- FOUND MONUMENT AS NOTED
- CALC POINT, NOTHING SET
- △ CALTRANS CONTROL MONUMENT
- ( ) R4 RECORD PER 6 PM 5
- ( ) R5 RECORD PER 2 RS 92
- SUPERCEDED RIGHT OF WAY LINE



FOUND MONUMENTS		COORDINATES		DESCRIPTION (* = NOT OF RECORD)	REFERENCE	
POINT #	NORTH	EAST	BK		OF	PG
RW425	1935797.21	6856479.16	2	RS	92	
RW426	1935795.78	6856666.84	2	RS	92	
RW427	1935779.12	6856782.10	2	RS	92	
RW428	1935751.81	6856846.60	2	RS	92	
RW429	1935898.49	6856568.27	2	RS	92	
RW430	1935850.94	6856907.10	2	RS	92	
RW431	1935778.34	6857137.33	2	RS	92	
RW432	1935761.43	6857189.98	2	RS	92	
RW433	1935618.78	6857159.97	2	RS	92	

STATE OF CALIFORNIA  
CALIFORNIA STATE TRANSPORTATION AGENCY  
DEPARTMENT OF TRANSPORTATION  
DISTRICT 02  
**RECORD OF SURVEY  
OF MONUMENTATION**  
IN THE TOWN OF GREENVILLE  
TOWNSHIP 26 NORTH, RANGE 9 EAST, M.D.M.  
SECTIONS 2 & 3  
IN THE UNINCORPORATED AREA OF THE COUNTY  
OF PLUMAS, STATE OF CALIFORNIA, ALONG  
STATE HIGHWAY ROUTE 89 AT POST MILE 20.0 TO 20.5  
JANUARY, 2018 SHEET 3 OF 3

16 RS 37