

5288.22')
5287.39')

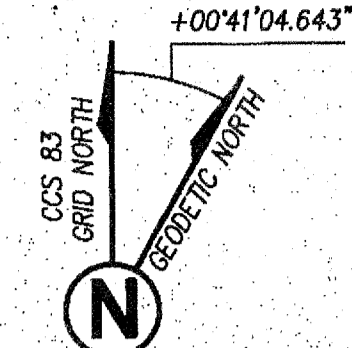
SEE SHEET 1

S.E. 1/4

6 RS 85

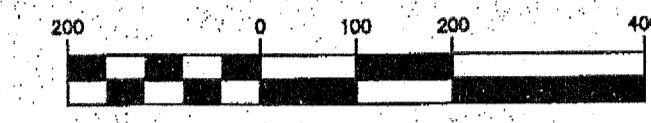
STATE HWY 70

2662.10'
2662.55')



CONVERGENCE ANGLE AT STATION "A"
ELEV=3683.33' N.A.V.D. 88 DATUM

GRAPHIC SCALE



(IN FEET)
1 inch = 200 ft.

ESTABLISHED BY INTERSECTION. SEARCHED DID NOT FIND .5" REBAR PER 6 RS 85. SET 14.5" STAINLESS STEEL ROD DRIVEN TO REFUSAL. PLACED FOREST SERVICE STANDARD MONUMENT OF ROD ENCASED IN 8" DUCT FILLED WITH ROCK AND CEMENT FROM BOTTOM TO TOP. BUILT 3" STONE MOUND 2' HIGH AROUND DUCT. ALUMINUM CAP STAMPED "SE1/16 LS7019 2017". A BARB WIRE FENCE BEARS SOUTH 1' AND RUNS NORTH AND SOUTH

FOUND 1/2 REBAR, NO CAP. ACCEPTED AS MONUMENT PER 8 PM 113.

FOUND 1/2 REBAR CAP STAMPED "L.S. 3297. PER 8 PM 113. HELD FOR LINE.

DID NOT SEARCH
1/16

(2660.49')

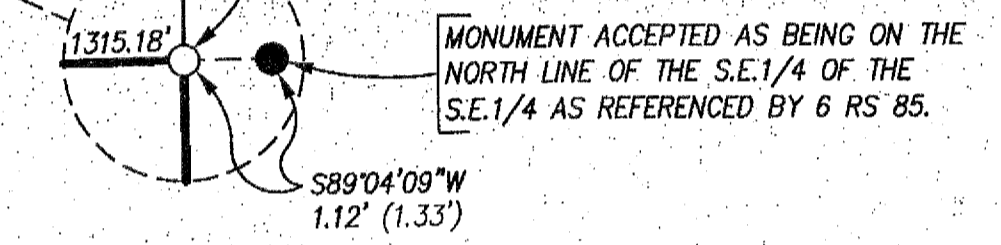
(N00°49'19"W
N00°48'41"W

FOUND 1/2 REBAR CAP STAMPED "L.S. 3297. PER 8 PM 113. HELD FOR LINE.

FOUND 1/2 REBAR, NO CAP. ACCEPTED AS MONUMENT PER 8 PM 113.

EXISTING 18' WIDE DIRT ROADWAY

ESTABLISHED BY BEARING - BEARING INTERSECTION. SET FOREST SERVICE ALUMINUM MONUMENT 30" IN GROUND STAMPED "S1/16 S10/S11 LS 7019" FROM WHICH A 1.5" OPEN IRON PIPE BEARS EAST 1.12' AS SHOWN HEREON.



MONUMENT ACCEPTED AS BEING ON THE NORTH LINE OF THE S.E.1/4 OF THE S.E.1/4 AS REFERENCED BY 6 RS 85.

S.E. 1/4
OF THE
S.E. 1/4
U. S. F. S.

SW 1/4
SECTION 11

5 RS 14
8 PM 113
PARCEL C

LEGEND

- INDICATES SET U.S. FOREST SERVICE MONUMENT STAMPED AS NOTED
- INDICATES FOUND MONUMENT AS NOTED
- ()1 INDICATES RECORD DATA PER 6 RS 85
- ()2 INDICATES RECORD DATA PER 8 PM 114
- S.N.F. INDICATES SEARCHED, NOT FOUND

SET FOREST SERVICE MONUMENT 30" IN GROUND STAMPED "E1/16 S10/S15 LS 7018 2017". A 1/2" REBAR, NO RECORD, BEARS SOUTH 1.06' AS SHOWN HEREON.

FOUND 2" IRON PIPE WITH 1/2" BRASS CAP SET INSIDE STAMPED "R.E.C. 13528" PER 3 RS 143 AND 6 RS 85. ACCEPTED AS S.E. CORNER SECTION 10.

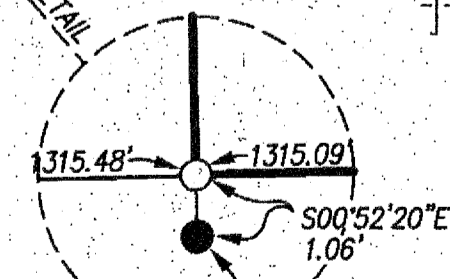
ESTABLISHED BY SINGLE PROPORTION

S 1/4
S.N.F.

FOUND 1/2" REBAR STAMPED "L.S. 3297" PER 6 RS 85. NOT ACCEPTED.

373.32'
(374.07')1
N00°55'50"W
0.81'

SEE DETAIL



FOUND 1/2" REBAR PER 8 PM 114. MONUMENT ACCEPTED AS BEING ON THE WEST LINE OF THE S.E.1/4 OF THE S.E.1/4 AS REFERENCED ON 6 RS 85 AND 8 PM 114

1315.09' (1315.52')1
5261.14'
5261.96')1

11 PM 109

10

POINT "A"

15 | 14

RECORD OF SURVEY FOR:

UNITED STATES FOREST SERVICE

THE SOUTHEAST QUARTER OF THE SOUTHEAST QUARTER OF SECTION 10, TOWNSHIP 24 NORTH, RANGE 9 EAST, M.D.M., PLUMAS COUNTY, STATE OF CALIFORNIA.



PROJECT DESIGN CONSULTANTS
Planning | Landscape Architecture | Engineering | Survey

701 B Street, Suite 800
San Diego, CA 92101
619.238.8471 Tel
619.234.0349 Fax

SHEET 2 OF 2 SHEETS

P:\4302\Survey_Boundary\USFS-2017-Task No.1 - PlumasNF-Elizabethtown\RS\4302r.as02.dwg
Jan 30, 2018 - 4:10pm

16 RS 30