



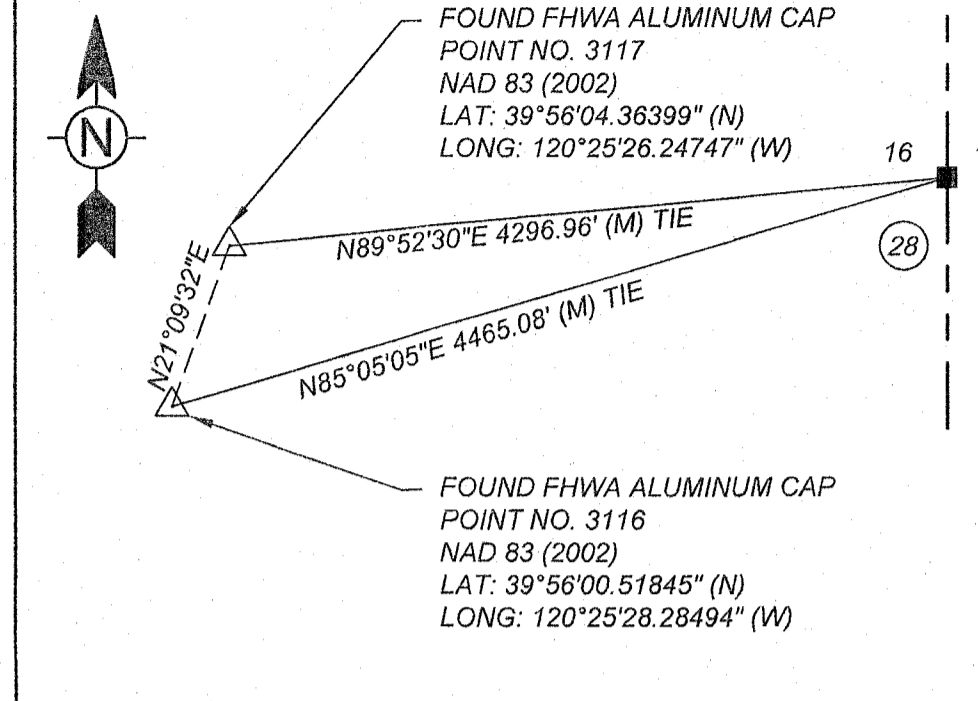
www.tetrattech.com

711 Tank Farm Road, Suite 110
San Luis Obispo, CA 93401
(805) 542-9052

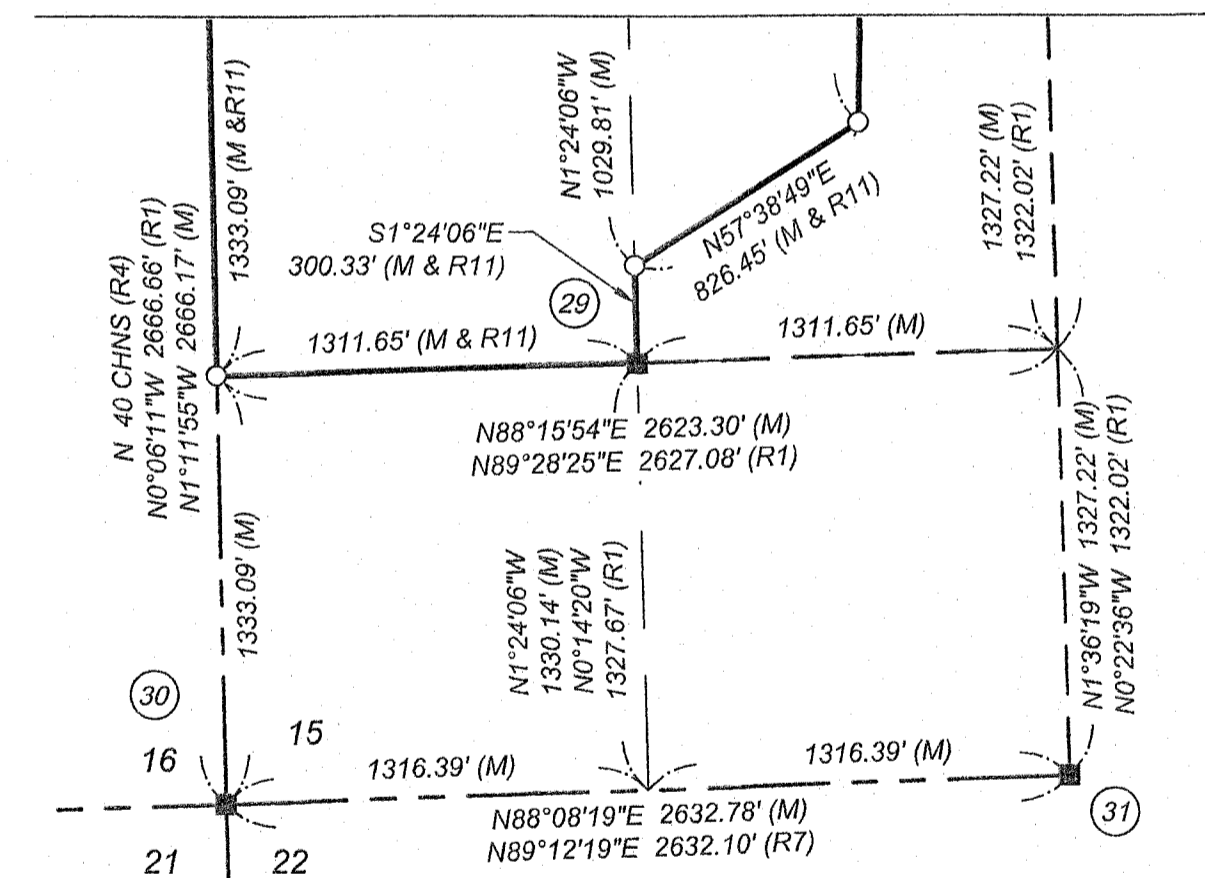
LEGEND

- FOUND MONUMENT AS NOTED, SEE SHEET 3 FOR MONUMENT DESCRIPTIONS
- SET 5/8" REBAR & 1-1/2" ALUMINUM CAP, STAMPED "L.S. 8925" OR AS NOTED
- SFNF SEARCHED FOR, NOT FD., NOTHING SET
- CHNS. CHAINS
- (M) MEASURED AND RECORDED
- (MOD) MODIFIED COURSE
- (R1) 9 RS 59-61
- (R2) 9 RS 90-94
- (R3) 11 RS 146
- (R4) GLO FIELD NOTES VOL. 292 BK. 20, PG 22-36
- (R5) 424 OR 519
- (R6) 283 OR 144
- (R7) 5 RS 80
- (R8) GLO FIELD NOTES VOL. 303 BK. 7
- (R9) GLO MAP 411782 T24N. R14E. MD.
- (R10) GLO FIELD NOTES VOL. 292 BK. 21
- (R11) RECORDED INST. NO. 2013-0008899

**GEODETIC CONTROL
DIAGRAM**



MATCH LINE - SEE LEFT



**AMENDMENT TO RECORD OF
SURVEY BOOK 15, SHEET 142**

WETLAND RESERVE PROGRAM EASEMENT
NO. 66-9104-2-536 PER WARRANTY EASEMENT DEED
RECORDED DECEMBER 12, 2013 AS INST. NO. 2013-0008899

BEING A PORTION OF SECTIONS 7, 8, 9, 10, 15, 16, 17, AND 18,
TOWNSHIP 24 NORTH, RANGE 14 EAST, M.D.B. & M., IN THE COUNTY
OF PLUMAS, STATE OF CALIFORNIA

SHEET 2 OF 3
SURVEYED OCTOBER 2012

16 RS 23

