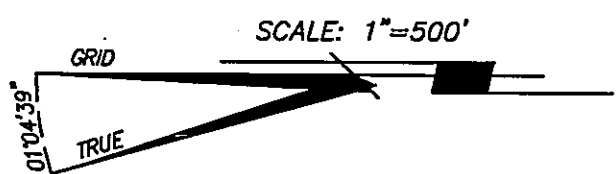


VICINITY MAP
NTS



BASIS OF BEARINGS:

THE BEARINGS AND DISTANCES SHOWN ARE BASED ON THE CALIFORNIA COORDINATE SYSTEM, NAD83, ZONE 1. DISTANCES SHOWN ARE GRID, TO ADJUST TO GROUND DIMENSION DIVIDE DISTANCES SHOWN BY A COMBINED FACTOR OF 0.99982894.

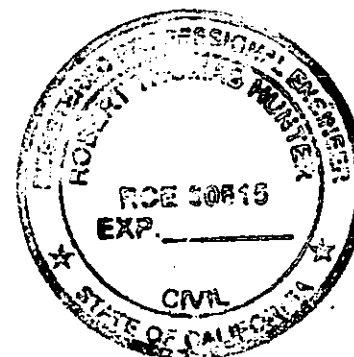
CONVERGENCE ANGLE: +01°04'39" AT THE SECTION CORNER COMMON TO SECTIONS 31&36, T 23 N, R 15 E AND 1&6, T 22 N, R 15 E, M.D.M.

*AREAS SHOWN HAVE BEEN ADJUSTED TO GROUND DIMENSION.

COUNTY SURVEYOR'S STATEMENT:

THIS MAP HAS BEEN EXAMINED IN ACCORDANCE WITH SECTION 8766 OF THE PROFESSIONAL LAND SURVEYOR'S ACT THIS 8th DAY OF April 2015.

R Tom Hunter
R.TOM HUNTER R.C.E. 30515
COUNTY SURVEYOR EXP. 3/31/16



RECORDER'S STATEMENT:

FILED THIS 10th DAY OF April 2015 AT 2:22:pm. IN BOOK 16 OF RECORD OF SURVEYS, AT PAGE 6 AT THE REQUEST OF R.E.Y. ENGINEERS, INC.

FEE \$ 800

DOC. NO. 2015-0001907

Kathy Williams
KATHY WILLIAMS
COUNTY RECORDER

REFERENCES:

- (R1) 4 RS 27
- (R2) 7 RS 74
- (R3) 12 RS 134
- (R4) 13 RS 48
- (R5) 13 RS 77
- (R6) 15 RS 64
- (R7) 4 PM 80

NOTES:

1. THE PURPOSE OF THIS SURVEY IS TO ESTABLISH THE AREA OF A CONSERVATION EASEMENT FOR THE NATIONAL RESOURCE CONSERVATION SERVICE AS REQUIRED BY SECTION 8762 (B)(1)(4)(5).

SURVEYOR'S STATEMENT:

THIS MAP WAS PREPARED BY ME OR UNDER MY DIRECTION IN CONFORMANCE WITH THE REQUIREMENTS OF THE PROFESSIONAL LAND SURVEYORS ACT AT THE REQUEST OF THE NATURAL RESOURCES CONSERVATION SERVICE IN SEPTEMBER 2014.

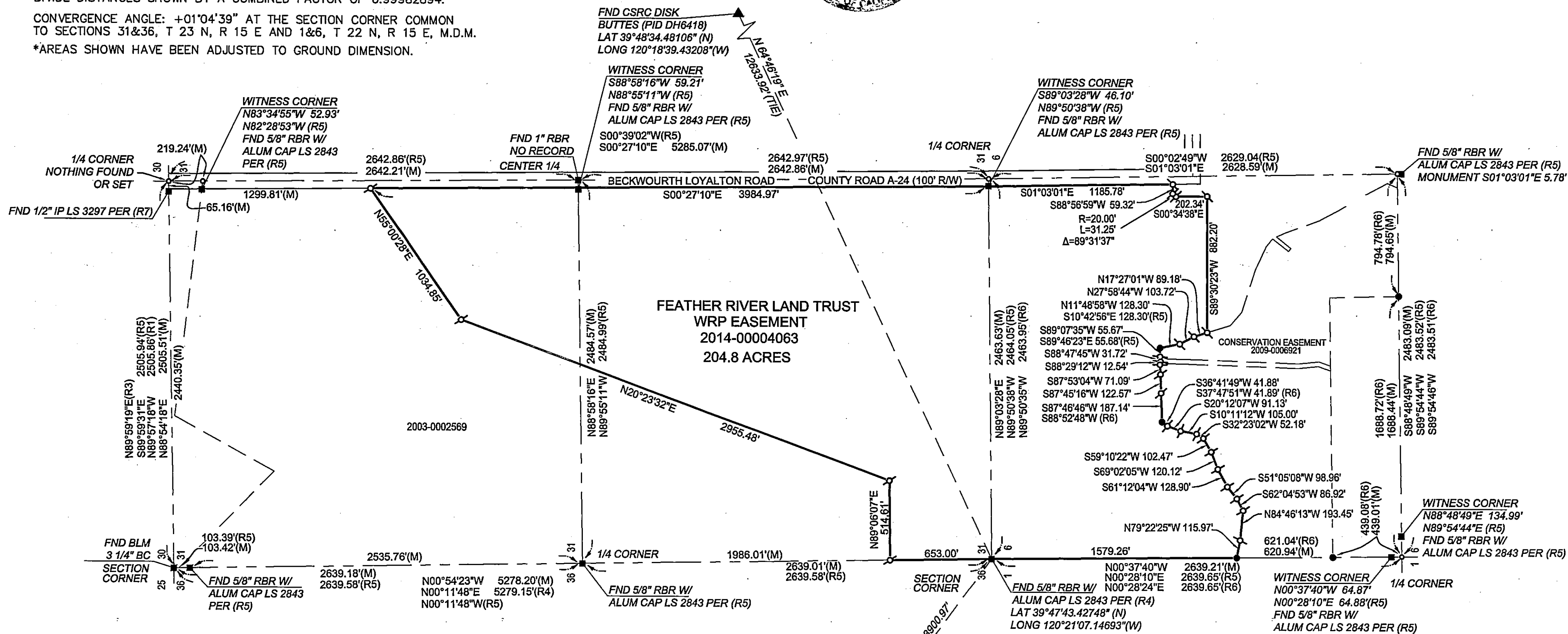
James C. Brainard
JAMES C. BRAINARD L.S. 7051

DATE: 3/26/2015



LEGEND:

- DIMENSION POINT
- ⊗ SET 5/8" REBAR WITH ALUMINUM CAP STAMPED "L.S. 7051"
- FOUND 3/4" IRON PIPE STAMPED "L.S. 6946" PER (R6)
- FOUND MONUMENT AS NOTED
- ▲ NGS MONUMENT AS NOTED
- RBR REBAR
- IP IRON PIPE
- BC BRASS CAP
- (M) MEASURED
- (R_) RECORD DOCUMENT REFERENCE DESIGNATION



RECORD OF SURVEY

WETLAND RESERVE PROGRAM EASEMENT
NO. 66-9104-2-533 PER WARRANTY EASEMENT DEED
RECORDED JULY 18, 2014 AS INST. NO. 2014-0004063
BEING PORTIONS OF SECTION 6, T.22N, R.15E,
AND SECTION 31, T.23N, R.15E, M.D.M.

PLUMAS COUNTY, CALIFORNIA
MARCH 2015

R.E.Y. ENGINEERS, Inc.