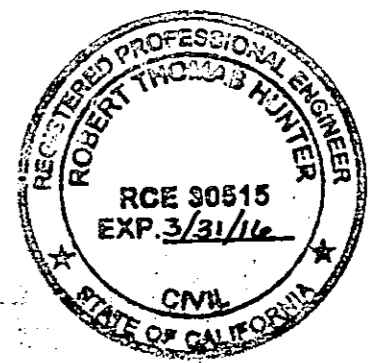


REASON FOR FILING
 THE REASON FOR THIS RECORD OF SURVEY IS AS SET FORTH IN THE PROFESSIONAL LAND SURVEYORS ACT, ARTICLE 5, 8762 b1, AND b4.

- LEGEND**
- FOUND MONUMENT AS NOTED
 - × CALCULATED POINT NOTHING FOUND - NOTHING SET
 - ⊗ FND MONUMENTS OR CORNER NOTE. SEE SHEET 4
 - SFNF SEARCHED FOR, NOT FOUND
 - (M) MEASURED
 - (RAD) RADIAL
 - (R1) 6 RS 76
 - (R2) 13 RS 48
 - (R3) 13 RS 77
 - (R4) 4 RS 147
 - (R5) 5 RS 49
 - (R6) 9 RS 62
 - (R7) 15 RS 18
 - (R8) 14 RS 134
 - (R9) GLO FIELD NOTES
 - (R10) 9 RS 121
 - (R11) DOC #2008-0002411

SURVEYOR'S STATEMENT
 THIS MAP CORRECTLY REPRESENTS A SURVEY MADE BY ME OR UNDER MY DIRECTION IN CONFORMANCE WITH THE REQUIREMENTS OF THE PROFESSIONAL LAND SURVEYOR'S ACT AT THE REQUEST OF THE NATURAL RESOURCES CONSERVATION SERVICES IN [MONTH, YEAR].

Daniel C. Helt 2/4/15
 DANIEL C. HELT L.S. 8925 DATE



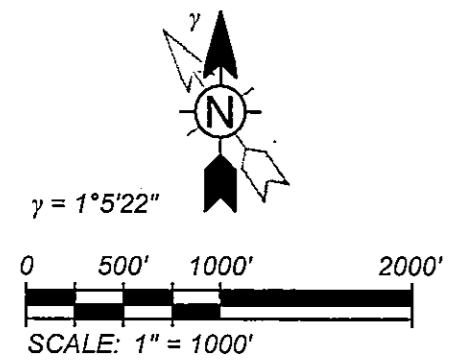
COUNTY SURVEYOR'S STATEMENT
 THIS MAP HAS BEEN EXAMINED IN ACCORDANCE WITH SECTION 8766 OF THE PROFESSIONAL LAND SURVEYORS' ACT THIS 17th DAY OF February, 2015.

R. TOM HUNTER *R Tom Hunter*
 R.C.E. 30515
 COUNTY SURVEYOR

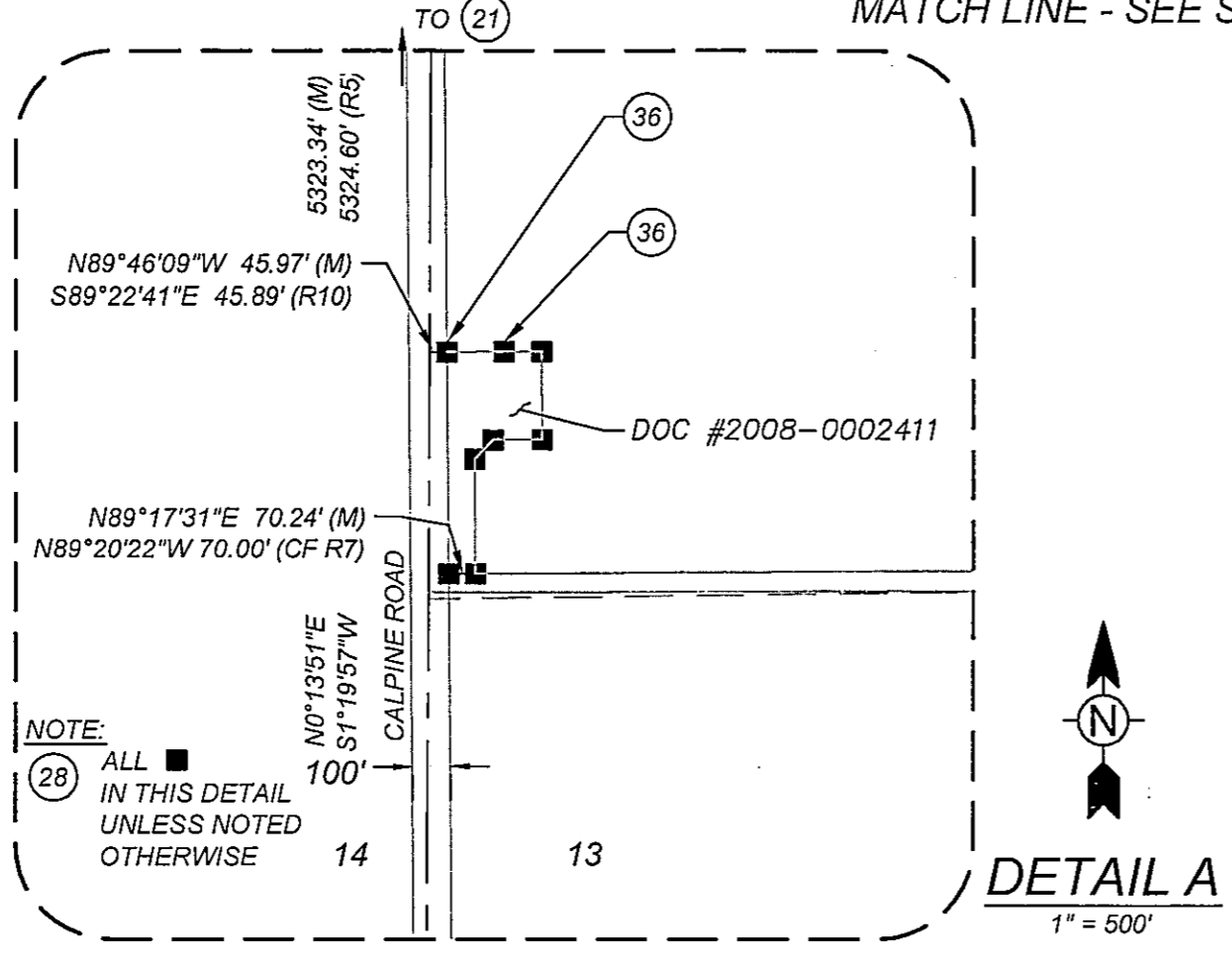
RECORDER'S STATEMENT
 FILED THIS 18th DAY OF February, 2015
 AT 9:57 A.M. IN BOOK 16 OF RECORD OF SURVEYS
 AT PAGE 2-4, AT THE REQUEST OF PC Engineer

SEE SHEET 3 FOR GEODETIC CONTROL INFORMATION AND MONUMENT NOTES.
Kathy Williams
 KATHY WILLIAMS
 COUNTY RECORDER

RECORD OF SURVEY
 BEING A PORTION OF SECTIONS 1, 12, 13 AND 24, TOWNSHIP 22 NORTH, RANGE 14 EAST; SECTIONS 5 THROUGH 8 AND 16 THROUGH 20, TOWNSHIP 22 NORTH, RANGE 15 EAST; M.D.M., IN THE COUNTY OF PLUMAS, STATE OF CALIFORNIA



TETRA TECH
 www.tetrattech.com
 865 Aerovista Place, Suite 230
 San Luis Obispo, CA 93401
 (805) 542-9052



NOTE
 SEE SHEET 3 FOR GEODETIC CONTROL INFORMATION AND MONUMENT NOTES.

BASIS OF BEARINGS
 MEASURED BEARINGS AND DISTANCES ARE BASED ON THE CALIFORNIA COORDINATE SYSTEM OF 1983 (2011), ZONE 1. DIVIDE DISTANCES BY 0.9998379801 TO OBTAIN GROUND LEVEL DISTANCES. COORDINATE VALUES SHOWN HEREON ARE CALIFORNIA GEODETIC COORDINATES OF 1983 (2010).

AREAS SHOWN HEREON HAVE BEEN ADJUSTED TO GROUND DIMENSION WITH THE COMBINED FACTOR STATED ABOVE.

16 RS 2