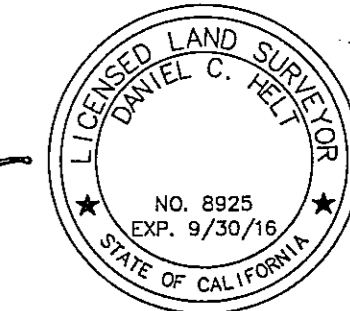


SURVEYOR'S STATEMENT

THIS MAP CORRECTLY REPRESENTS A SURVEY MADE BY ME OR UNDER MY DIRECTION IN CONFORMANCE WITH THE REQUIREMENTS OF THE PROFESSIONAL LAND SURVEYORS' ACT AT THE REQUEST OF THE NATURAL RESOURCES CONSERVATION SERVICE IN DECEMBER 2012 AND MAY 2014.

Daniel C. Held
 DANIEL C. HELT L.S. 8925 DATE

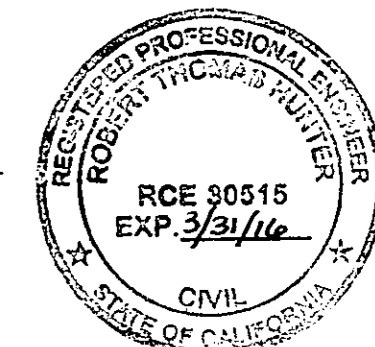


COUNTY SURVEYOR'S STATEMENT

THIS MAP HAS BEEN EXAMINED IN ACCORDANCE WITH SECTION 8766 OF THE PROFESSIONAL LAND SURVEYORS' ACT THIS 14th DAY OF February, 2015.

R Tom Hunter

R. TOM HUNTER R.C.E. 30515
 COUNTY SURVEYOR EXP. 3/31/16



RECORDER'S STATEMENT

FILED THIS 15th DAY OF February, 2015,
 AT 9:46 A.M. IN BOOK 16 OF RECORD OF SURVEYS
 AT PAGE 1, AT THE REQUEST OF PC Engineer

FEE: \$800

Kathy Williams
 KATHY WILLIAMS
 COUNTY RECORDER

REASON FOR FILING

THIS SURVEY SHOWS THE EASEMENT BOUNDARY OF THE WETLAND RESERVE PROGRAM OF THE NATIONAL RESOURCES CONSERVATION SERVICE (NRCS) OF THE USDA, AS SET FORTH IN THE PROFESSIONAL LAND SURVEYORS ACT, ARTICLE 5, 8762 (b1, b4 and b5).

BASIS OF BEARINGS

THE BASIS OF BEARING OF THIS SURVEY IS THE CALIFORNIA COORDINATE SYSTEM 1983, CCS83 (2011), ZONE 1, ESTABLISHED BETWEEN STATION HPGN D CA 02 ES (PID DF4390) AND STATION 89 PLU 16.65 (PID DH6398) BEING S64°32'56"E.

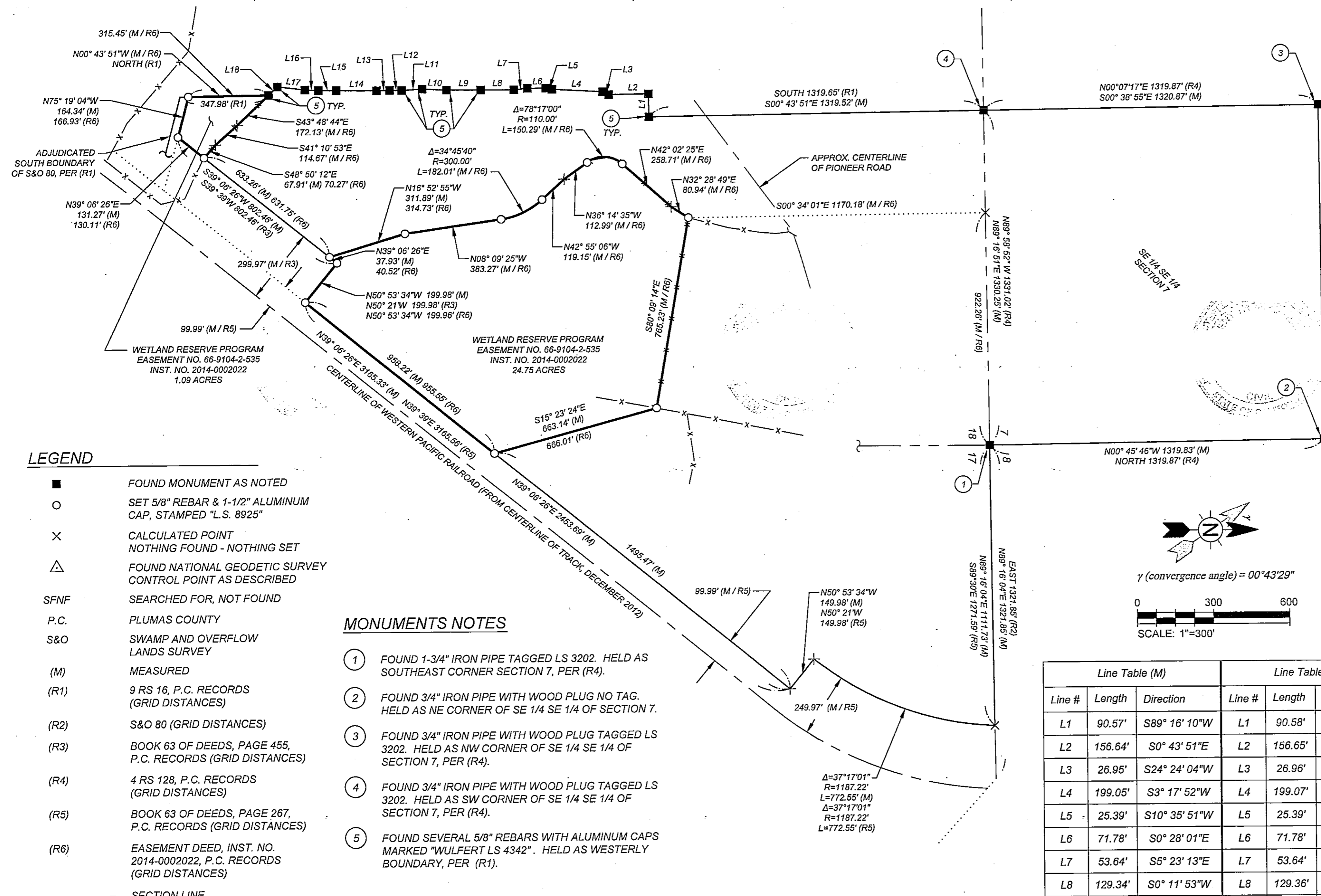
DISTANCE STATEMENT

THE DISTANCES SHOWN ON THIS SURVEY ARE GRID DISTANCES. TO OBTAIN GROUND LEVEL DISTANCES DIVIDE GRID DISTANCES BY 0.999,897,903. RECORD DISTANCES HAVE BEEN CONVERTED TO GRID DISTANCES FOR COMPARISON PURPOSES.

RECORD OF SURVEY

WETLAND RESERVE PROGRAM EASEMENT
 NO. 66-9104-2-535
 PER WARRANTY EASEMENT DEED
 RECORDED APRIL 10, 2014
 (INSTRUMENT NUMBER 2014-0002022)
 BEING A PORTION OF SECTIONS 17 & 18,
 TOWNSHIP 26 NORTH, RANGE 10 EAST, M.D.B. & M.
 IN THE COUNTY OF PLUMAS, STATE OF CALIFORNIA

SHEET 1 OF 1
 SURVEYED DECEMBER 2012 AND MAY 2014



LEGEND

- FOUND MONUMENT AS NOTED
- SET 5/8" REBAR & 1-1/2" ALUMINUM CAP, STAMPED "L.S. 8925"
- × CALCULATED POINT NOTHING FOUND - NOTHING SET
- △ FOUND NATIONAL GEODETIC SURVEY CONTROL POINT AS DESCRIBED
- SFNF SEARCHED FOR, NOT FOUND
- P.C. PLUMAS COUNTY
- S&O SWAMP AND OVERFLOW LANDS SURVEY
- (M) MEASURED
- (R1) 9 RS 16, P.C. RECORDS (GRID DISTANCES)
- (R2) S&O 80 (GRID DISTANCES)
- (R3) BOOK 63 OF DEEDS, PAGE 455, P.C. RECORDS (GRID DISTANCES)
- (R4) 4 RS 128, P.C. RECORDS (GRID DISTANCES)
- (R5) BOOK 63 OF DEEDS, PAGE 267, P.C. RECORDS (GRID DISTANCES)
- (R6) EASEMENT DEED, INST. NO. 2014-0002022, P.C. RECORDS (GRID DISTANCES)
- SECTION LINE
- PROPERTY LINE
- WRP EASEMENT BOUNDARY
- ROAD CENTERLINE
- x-x-x- FENCE LINE
- RAILROAD CENTERLINE
- REFERENCE LINE

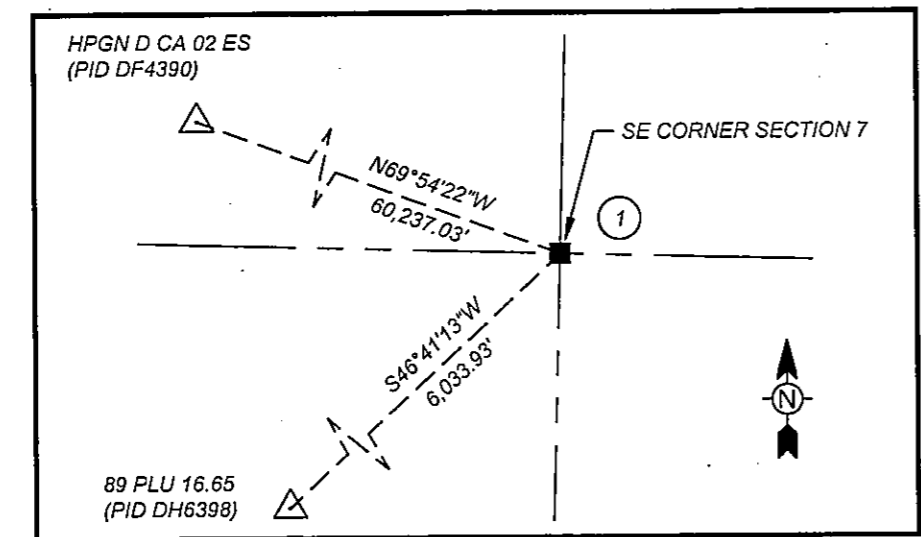
MONUMENTS NOTES

- ① FOUND 1-3/4" IRON PIPE TAGGED LS 3202. HELD AS SOUTHEAST CORNER SECTION 7, PER (R4).
- ② FOUND 3/4" IRON PIPE WITH WOOD PLUG NO TAG. HELD AS NE CORNER OF SE 1/4 SE 1/4 OF SECTION 7.
- ③ FOUND 3/4" IRON PIPE WITH WOOD PLUG TAGGED LS 3202. HELD AS NW CORNER OF SE 1/4 SE 1/4 OF SECTION 7, PER (R4).
- ④ FOUND 3/4" IRON PIPE WITH WOOD PLUG TAGGED LS 3202. HELD AS SW CORNER OF SE 1/4 SE 1/4 OF SECTION 7, PER (R4).
- ⑤ FOUND SEVERAL 5/8" REBARS WITH ALUMINUM CAPS MARKED "WULFERT LS 4342". HELD AS WESTERLY BOUNDARY, PER (R1).

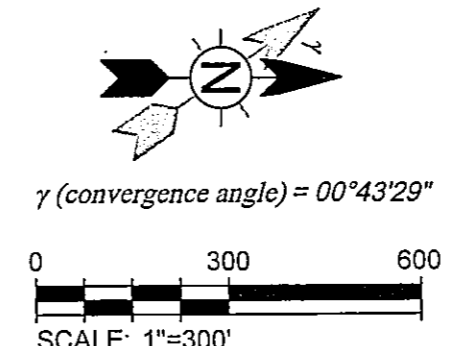
GEODETIC CONTROL POINTS

HPGN D CA 02 ES (PID DF4390)
 NAD 83 (2011), EPOCH 2010.00
 LAT: 40°10'42.50063" (N)
 LONG: 121°05'35.40202" (W)
 CONVERGENCE ANGLE: +0°35'34.7"
 COMBINED SCALE FACTOR: 0.999,748,110

89 PLU 16.65 (PID DH6398)
 NAD 83 (2011), EPOCH 2010.00
 LAT: 40°06'31.21165" (N)
 LONG: 120°54'27.16649" (W)
 CONVERGENCE ANGLE: +0°42'51.6"
 COMBINED SCALE FACTOR: 0.999,808,970



GEODETIC CONTROL DIAGRAM
 NTS



Line Table (M)			Line Table (R1)		
Line #	Length	Direction	Line #	Length	Direction
L1	90.57'	S89° 16' 10"W	L1	90.58'	WEST
L2	156.64'	S0° 43' 51"E	L2	156.65'	NORTH
L3	26.95'	S24° 24' 04"W	L3	26.96'	S25°07'54"W
L4	199.05'	S3° 17' 52"W	L4	199.07'	S4° 01' 42"W
L5	25.39'	S10° 35' 51"W	L5	25.39'	S11° 19' 41"W
L6	71.78'	S0° 28' 01"E	L6	71.78'	S0° 15' 50"E
L7	53.64'	S5° 23' 13"E	L7	53.64'	S4° 39' 22"E
L8	129.34'	S0° 11' 53"W	L8	129.36'	S0° 55' 43"W
L9	135.27'	S0° 04' 32"W	L9	135.29'	S0° 48' 22"W
L10	96.43'	S3° 06' 13"W	L10	96.44'	S3° 50' 03"W
L11	81.48'	S3° 41' 38"E	L11	81.49'	S2° 57' 47"E
L12	46.72'	S1° 32' 15"W	L12	46.73'	S2° 16' 05"W
L13	51.77'	S1° 06' 58"E	L13	51.77'	S0° 23' 07"E
L14	159.19'	S0° 33' 31"W	L14	159.20'	S1° 17' 21"W
L15	70.57'	S0° 27' 18"W	L15	70.57'	S1° 11' 08"W
L16	52.55'	S2° 51' 18"W	L16	52.55'	S3° 35' 08"W
L17	109.59'	S6° 53' 16"W	L17	109.60'	S7° 37' 06"W
L18	48.65'	S42° 24' 06"E	L18	48.66'	S41° 40' 15"E

TETRA TECH
 www.tetrattech.com
 865 Aerovista Place, Suite 230
 San Luis Obispo, CA 93401
 (805) 542-9052

16 RS 1