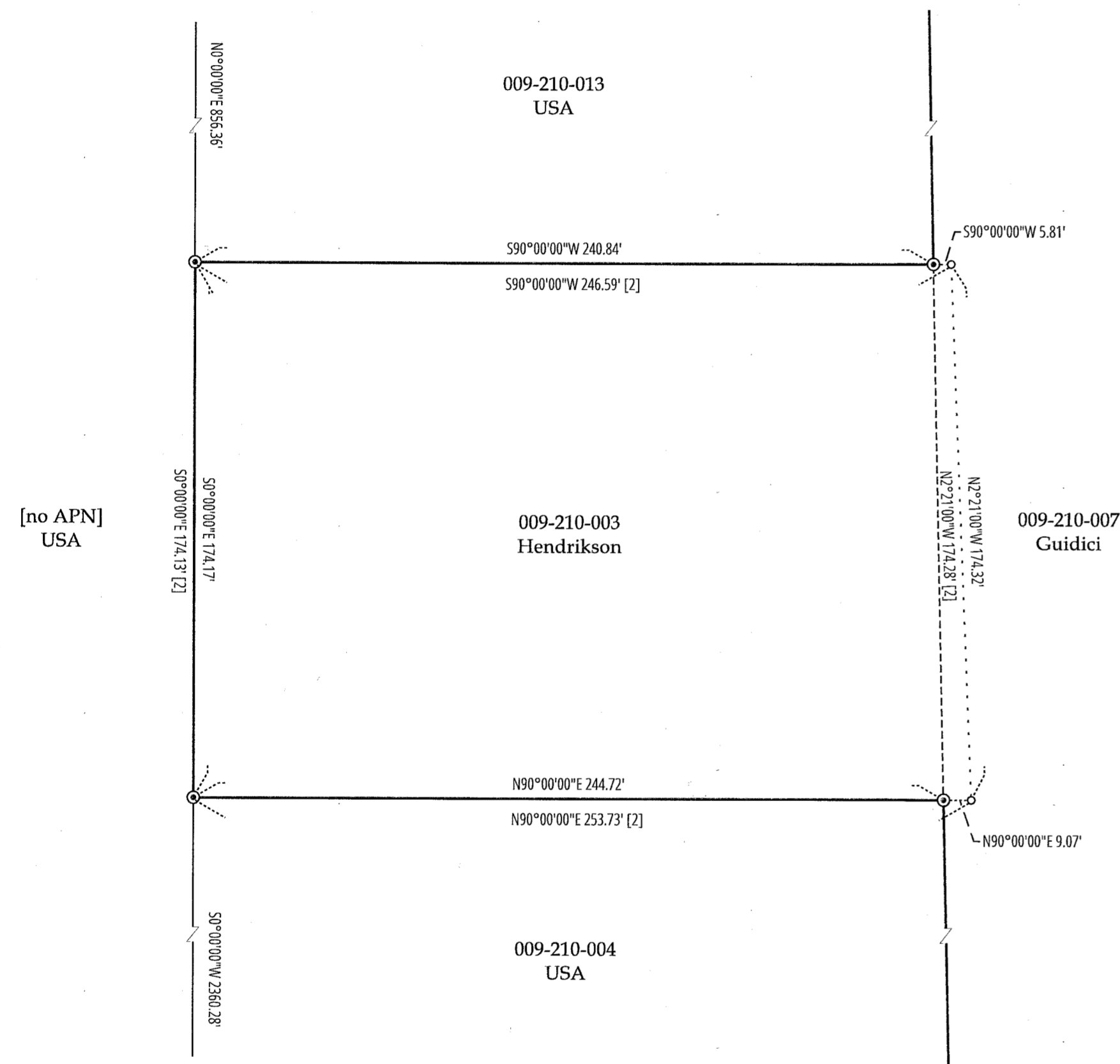


Record of Survey
Section 27, T24N R16E, M.D.M.

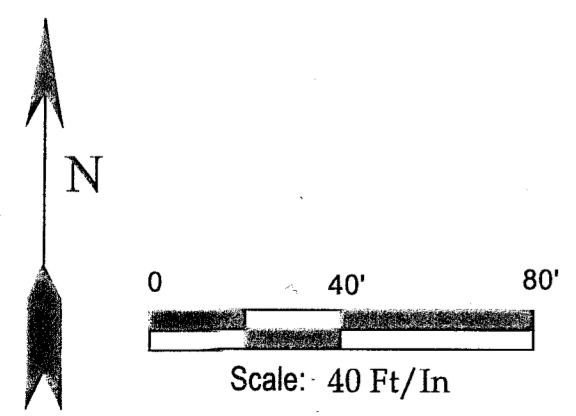
County of Plumas
State of California
February 2020

Detail



- ① T24N R16E S28 S27 S33 S24 1960 CA DWR Found 2" I.P. w/ 2 1/2" brass cap projecting 1.5' above ground in 4'x4'x1' rock mound including original stone monument
Fd. 24" J.P. w/ heel blaze & visible scribing, w/ B.T. sign "S81-37W, 20.83 ft."
Fd. 25" J.P. w/ heel blaze & visible scribing, w/ B.T. sign "N10-W, 37.50 ft."
Fd. burned J.P. stump 3.5 ft. high, presumed original bearing tree at N67E, 296 lks
No original B.T.'s found
- ② T24N R16E S27 S26 S34 S35 1960 CA DWR Found 2" I.P. w/ 2 1/2" brass cap projecting 1.4 ft. above 3'x3'x1' rock mound
Fd. 23" J.P. w/ heel blaze & visible scribing, w/ B.T. sign "S02-58E, 20.3 ft."
Fd. 23" J.P. w/ heel blaze & visible scribing, no B.T. sign
B.T. sign for the SE tree was found on loose stump 20 ft. NE of monument
- ③ T24N R16E 1/4 S27 S26 1973 BLM Found 2 1/2" I.P. w/ 3" brass cap in 3'x3'x0.5' rock mound
Fd. 26" J.P. w/ heel blaze overgrown, w/ B.T. sign "N83E, 110 lks"
Fd. 13" snag dead & down w/ B.T. sign "S65W, 10 lks"
Fd. 48" diameter stump, 10 ft tall at N82E, 183 lks
- ④ T24N R16E S22 S23 S27 S26 1973 BLM Found 2 1/2" I.P. with 3 1/2" brass cap in 3'x3'x1' rock mound
Fd. 16" snag, dead & down, w/ B.T. sign "N59W, 30 lks"
Fd. Stump hole at S59E, 30 lks
Fd. 24" diameter stump, 3.5' above ground at N64W, 27 lks
Fd. 41" J.P. with B.T. sign "S70 1/2 W, 213 lks"
Searched for, did not find trees at: S49E, 171 lks; N48W, 200 lks; N52E, 261 lks
- ⑤ T24N R16E 1/4 S22 S27 1960 CA DWR Found 1 1/2" I.P. w/ brass cap projecting 2 ft above ground in 3'x3' rock collar including original stone monument
Fd. 13" J.P. w/ heel blaze & visible scribing, w/ B.T. sign "N66-24W, 44.7 ft"
Fd. 8" snag, dead and down, w/ B.T. sign "S36W, 22lks"
Fd. Possible original B.T., dead, down, & decayed, at S10W, 12 lks
Fd. Possible original B.T. stump, 32" diameter, at N00E, 144 lks
- ⑥ WC T24N R16E 1/4 S22 S24 1991 USFS Found 1/2" aluminum drive-type monument w/ 3" alum. cap
Fd. 20" J.P. w/ heel blaze 90% healed and "X" blazed at waist height, w/ B.T. sign "to W.C. S24-58E, 120.3 ft, 1/4 Cor. is S02-21E 81.5 ft from W.C."
Fd. 24" J.P. w/ heel & waist-height blazes 100% healed, w/ B.T. sign "to W.C. N64-38E, 104.1 ft."
- ⑦ Found 1/2" aluminum drive-type, no cap, in 2'x2' rock collar
Fd. 15" J.P. w/ heel blaze overgrown, w/ B.T. sign "S86-21W, 4.3 ft"
Fd. 11" J.P. w/ heel blaze overgrown, w/ B.T. sign, no bearing or distance given - tree is ~S30E, 7.3 ft to center
- ⑧ SE 1/16 S27 LS 5623 1991 USFS Found 1/2" aluminum drive-type monument w/ 3" alum. cap
Fd. 31" J.P. w/ heel blaze & visible scribing, w/ B.T. sign "S84-23E, 42.76 ft"
Fd. 12" J.P. w/ heel blaze & visible scribing, w/ B.T. sign "S48-36E, 40.48 ft"
- ⑨ E 1/16 C --- C LS 5623 19 USFS Found 1/2" aluminum drive-type w/ 3" alum. cap in 2'x2' rock collar
Fd. 19" J.P. w/ heel blaze & visible scribing, w/ B.T. sign "N19-39E, 19.5 ft"
Fd. 22" J.P. w/ heel blaze overgrown, w/ B.T. sign "N78-59E, 25.6 ft"
- ⑩ NE 1/16 S27 LS 5627 1991 USFS Found 1/2" aluminum drive-type monument w/ 3" alum. cap
Fd. 16" J.P. w/ heel blaze & visible scribing, w/ B.T. sign "N24-24E, 21.5 ft"
Fd. 6" J.P. dead and down, w/ B.T. sign "N86-06E, 19.2 ft"
- ⑪ N 1/16 S27 S28 LS 5623 1991 USFS Found 1/2" aluminum drive-type w/ 3" alum. cap in 2'x2' rock collar
Fd. 16" J.P. w/ heel blaze & visible scribing, w/ B.T. sign "N35-16W, 10.8 ft"
Fd. 31" J.P. w/ heel blaze overgrown, w/ B.T. sign "S84-26E, 21.5 ft"
- ⑫ Found 2" I.P. w/ 2 1/2" brass cap stamped "FR D 437, CA DWR"
- ⑬ Searched for, not found. Point calculated using referenced deeds to be on line between the SE and SW corners of Sec. 27.

I.P. - Iron Pipe
J.P. - Jeffrey Pine
B.T. - Bearing Tree
W.C. - Witness Corner



16 RS 73