

BASIS OF BEARINGS

THE SOUTH LINE OF THE NORTHEAST 1/4 OF THE SOUTHWEST 1/4 OF SECTION 3, T. 22N., R. 12E, M.D.M. SHOWN AS N 89°49'27" E, IN BOOK 7, OF RECORDS OF SURVEYS AT PAGE 143, IS THE BASIS OF BEARINGS SHOWN ON THIS MAP.

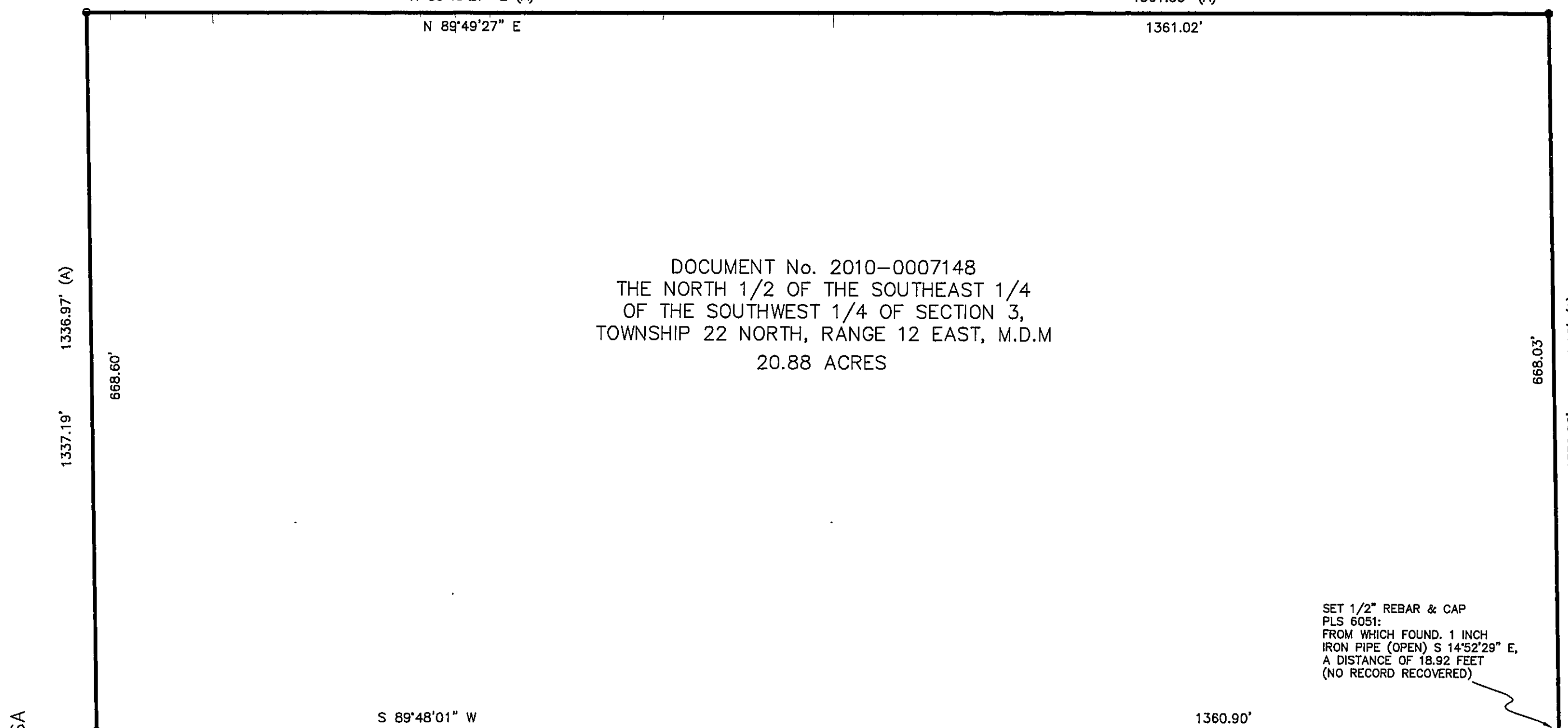
BASIS OF BEARINGS NOTE PER (A)

"BASIS OF BEARING IS ON THE CALIF. STATE PLANE SYSTEM
THEATA ANGLE = + 0°53'55" AT $\frac{41.3}{510}$ "

SW 1/16 SECTION 3 (A)

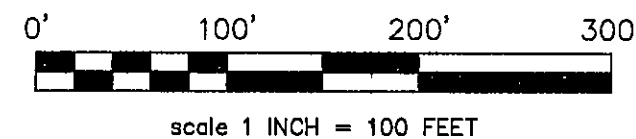
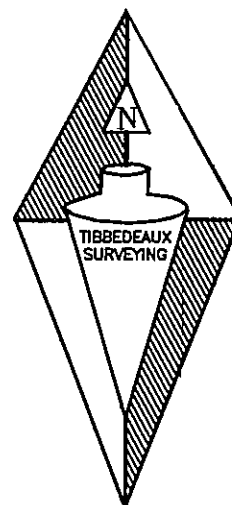
BASIS OF BEARINGS
N 89°49'27" E (A)

CS 1/16 SECTION 3 (A)



DOCUMENT No. 2010-0007148
THE NORTH 1/2 OF THE SOUTHEAST 1/4
OF THE SOUTHWEST 1/4 OF SECTION 3,
TOWNSHIP 22 NORTH, RANGE 12 EAST, M.D.M
20.88 ACRES

SET 1/2" REBAR & CAP
PLS 6051:
FROM WHICH FOUND. 1 INCH
IRON PIPE (OPEN) S 14°52'29" E,
A DISTANCE OF 18.92 FEET
(NO RECORD RECOVERED)



WEST 1/16 COR. SECTION 3/10
FOUND B.L.M. DISK 1983 & BEARING TREES:
32 INCH FIR S 00°23' W, 7.9 FEET
12 INCH PINE N 71°58' W, 16.8 FEET
(7 RS 143)
36" FIR S 1° E, 8.58'
6" PINE N 70° W, 17.16'
(14 RS 7)
28" D FIR BRS S 01°00' E 8.6 FT
6" P PINE BRS N 70° 00' W 17.2 FT

SOUTH 1/4 COR. SECTION 3
FOUND B.L.M. DISK 1983 & BEARING TREES:
39 INCH PINE N 37°44' E, 12.8 FEET
15 INCH PINE S 12°56' E, 26.4 FEET
(7 RS 143)
42" PINE N 40° E, 13.2'
12" PINE S 13°30' E, 26.4'
(14 RS 7)
38" P PINE BRS N37°34' E 12.6 FT
13" P PINE BRS S 12°44' E 26.6 FT

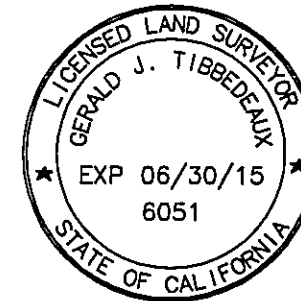
S 89°46'37" W S 89°47'42" W (A) 1360.84' 1361.77' (A)

GERLETTI

SURVEYOR'S STATEMENT

THIS MAP CORRECTLY REPRESENTS A SURVEY MADE BY ME OR UNDER MY DIRECTION IN CONFORMANCE WITH THE REQUIREMENTS OF THE PROFESSIONAL LAND SURVEYORS' ACT AT THE REQUEST OF ANDREW H. DOYEL IN SEPTEMBER 2013.

GERALD JOSEPH TIBBEDEAUX P.L.S. 6051
LICENSE EXPIRES 6-30-15

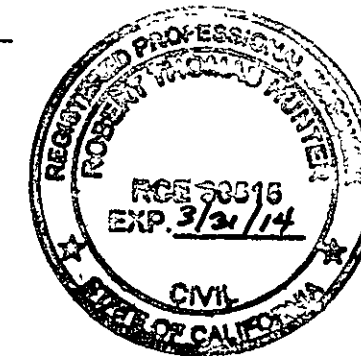


COUNTY SURVEYOR'S STATEMENT

THIS MAP HAS BEEN EXAMINED IN ACCORDANCE WITH SECTION 8766 OF THE PROFESSIONAL LAND SURVEYORS' ACT THIS 2nd DAY OF December, 2013

R Tom Hunter

R. TOM HUNTER
PLUMAS COUNTY SURVEYOR
LICENSE EXPIRES 3-31-14



RECORDER'S STATEMENT

FILED THIS 3rd DAY OF December, 2013 AT 9:00 AM. IN
BOOK 15 OF RECORDS OF SURVEYS AT PAGE 133, AT THE
REQUEST OF THE COUNTY SURVEYOR.

COUNTY RECORDER
KATHLEEN WILLIAMS

BY: Julie Krizga
DEPUTY

FEE: 8.00

DOCUMENT No. 2013-0008676

LEGEND

- ◆ FOUND 3 1/4 INCH B.L.M. DISK MARKED FOR APPROPRIATE CORNER (A)
- SET 1/2 INCH REBAR AND ALUMINUM CAP MARKED P.L.S. 6051
- FOUND 5/8 INCH REBAR AND ALUMINUM CAP MARKED L.S. 2843 (A)
- (A) RECORD INFORMATION PER BOOK 7 OF RECORDS OF SURVEYS, PAGE 143.

RECORD OF SURVEY FOR ANDREW H. DOYEL

PROPERTY DESCRIBED IN DOCUMENT NUMBER 2010-7148
WITHIN THE SOUTHWEST 1/4 OF SECTION 3, T.22N., R. 12E., M.D.M.
PLUMAS COUNTY CALIFORNIA
SCALE 1 INCH = 100 FEET SEPTEMBER 2013

Tibbadeaux Surveying
P.O. Box 1960
Portola, CA 96122
(530) 832-5772

2013-06

SHEET 1 OF 1

15 RS 133