

SCALE
1" = 1000 FEET
0 1000 2000

BASIS OF BEARINGS

MEASURED BEARINGS AND DISTANCES ARE GRID BASED ON THE CALIFORNIA COORDINATE SYSTEM OF 1983 (CCS83), ZONE 1.

θ AT THE NE CORNER OF SECTION 15 IS 0°26'03" TO GET TO TRUE NORTH ROTATE TO RIGHT 0°26'03" MULTIPLY GRID DISTANCES BY .999776619 TO GET GROUND DISTANCES.

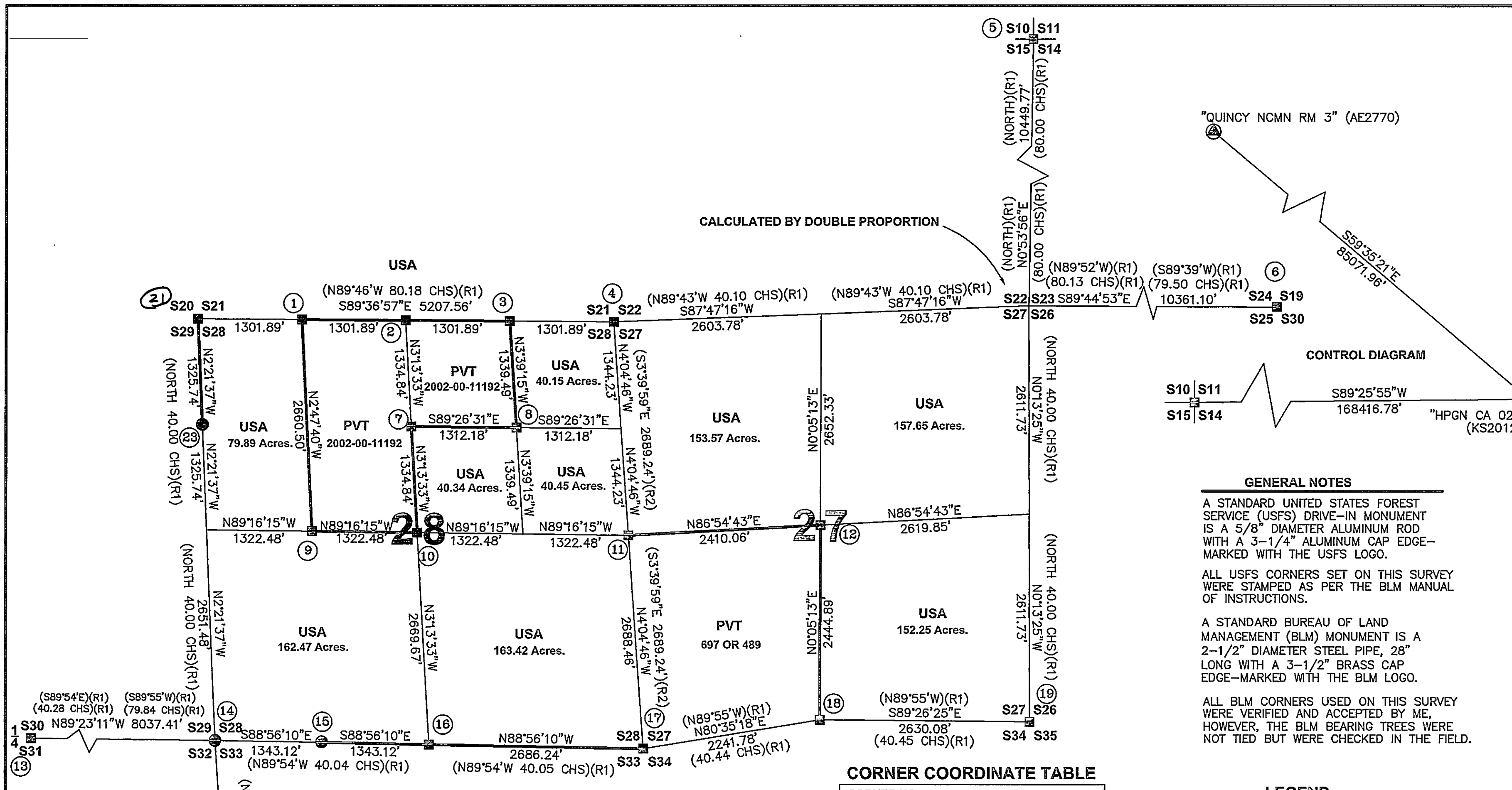
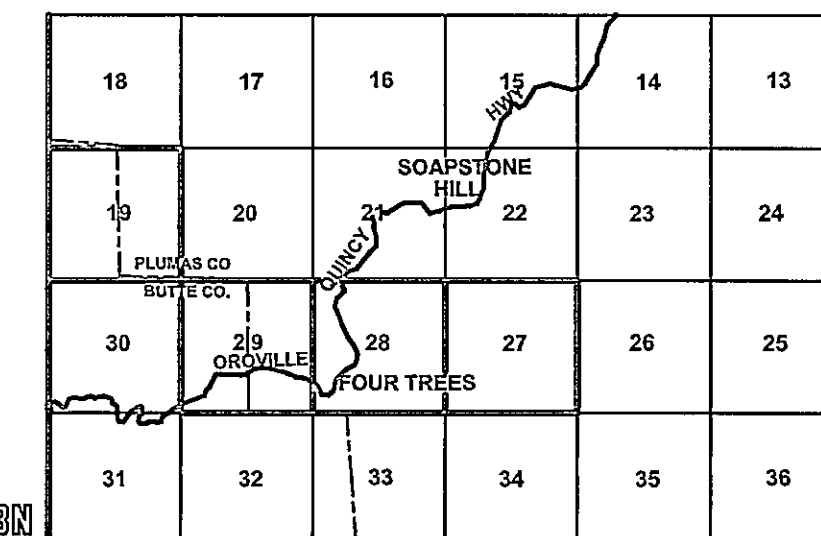
CONTROL WAS ESTABLISHED WITH G.P.S., TOPCON HIPER, DUAL FREQUENCY. CONTROL WAS ESTABLISHED USING THE FOLLOWING STATIONS:

"HPGN CA 02 27" (EPOCH DATE 2007)
LATITUDE: 39°51'14.41797" N 1832871.45 N
LONGITUDE: 120°41'06.41349" W 6930833.08 E

"QUINCY NCMN RM 3" (AE2770) (EPOCH 2007)
LATITUDE: 39°58'29.74784" N 1875934.67 N
LONGITUDE: 120°56'40.40623" W 6857465.53 E

LATITUDES AND LONGITUDES AS PUBLISHED BY NATIONAL GEODETIC SURVEYS (NGS) IN JANUARY 17, 2011

VICINITY MAP
NOT TO SCALE



CALCULATED BY DOUBLE PROPORTION

GENERAL NOTES

A STANDARD UNITED STATES FOREST SERVICE (USFS) DRIVE-IN MONUMENT IS A 5/8" DIAMETER ALUMINUM ROD WITH A 3-1/4" ALUMINUM CAP EDGE-MARKED WITH THE USFS LOGO.

ALL USFS CORNERS SET ON THIS SURVEY WERE STAMPED AS PER THE BLM MANUAL OF INSTRUCTIONS.

A STANDARD BUREAU OF LAND MANAGEMENT (BLM) MONUMENT IS A 2-1/2" DIAMETER STEEL PIPE, 28" LONG WITH A 3-1/2" BRASS CAP EDGE-MARKED WITH THE BLM LOGO.

ALL BLM CORNERS USED ON THIS SURVEY WERE VERIFIED AND ACCEPTED BY ME, HOWEVER, THE BLM BEARING TREES WERE NOT TIED BUT WERE CHECKED IN THE FIELD.

CORNER COORDINATE TABLE

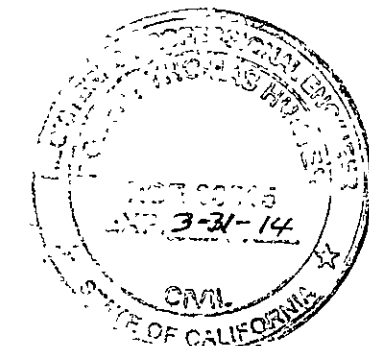
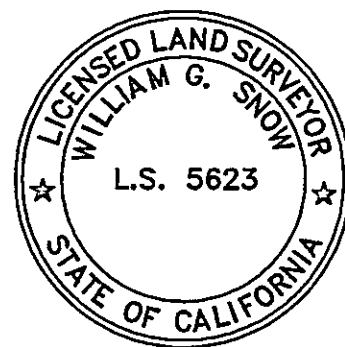
| CORNER NO. | NORTHING | EASTING |
|------------|-------------|-------------|
| 13 | 1815374.370 | 6744030.952 |
| 19A | 1809990.260 | 6752400.764 |
| 6 | 1820707.325 | 6772621.623 |
| 11 | 1817870.195 | 6757248.198 |
| 2 | 1820569.302 | 6754453.224 |
| 10 | 1817903.861 | 6754603.450 |
| 9 | 1817920.694 | 6753281.076 |
| 1 | 1820578.032 | 6753151.362 |
| 3 | 1820560.571 | 6755755.085 |
| 7 | 1819236.581 | 6754528.337 |
| 8 | 1819223.800 | 6755840.454 |
| 5 | 1831201.351 | 6762424.576 |
| 12 | 1818000.025 | 6759654.762 |
| 4 | 1820551.841 | 6757056.946 |
| 19 | 1815529.448 | 6762281.007 |
| 18 | 1815555.142 | 6759651.057 |
| 14 | 1815288.292 | 6752067.902 |
| 15 | 1815263.354 | 6753410.790 |
| 16 | 1815238.421 | 6754753.676 |
| 17 | 1815188.550 | 6757439.450 |

LEGEND

- ⊠ FOUND BLM CORNER
- + CALCULATED CORNER
- ⊙ CORNER NOTE NUMBER
- ⊕ SET STANDARD U.S. FOREST SERVICE DRIVE-IN MONUMENT (BEARING TREES AS NOTED)
- PROPERTY BOUNDARY MARKED AND POSTED
- ⊠ FD CORNER AS NOTED
- (R1) GLO 1875 VON SCHMIDT
- (R2) 6RS78
- (R3) BLM 1981 HAMILTON

SHEET INDEX

SECTIONS 28 & 27 T23NR6E MDM _____ 1 OF 4
COR. NOTES S28 S27 T23NR6E MDM _____ 2 OF 4
SECTIONS 19 & 29 T23NR6E MDM _____ 3 OF 4
COR. NOTES S19 S29 T23NR6E MDM _____ 4 OF 4



SURVEYOR'S STATEMENT

THIS MAP CORRECTLY REPRESENTS A SURVEY MADE BY ME OR UNDER MY DIRECTION IN CONFORMANCE WITH THE REQUIREMENTS OF THE PROFESSIONAL LAND SURVEYORS' ACT AT THE REQUEST OF PLUMAS NATIONAL FOREST IN

JULY 26, 2012
William G. Snow
WILLIAM G. SNOW LS 5623

COUNTY SURVEYOR'S STATEMENT

THIS MAP HAS BEEN EXAMINED IN ACCORDANCE WITH SECTION 8766 OF THE PROFESSIONAL LAND SURVEYORS' THIS 25th DAY OF July 2012.

BY *R. Tom Hunter*
ROBERT THOMAS HUNTER
PLUMAS COUNTY SURVEYOR RCE 30515

RECORDER'S STATEMENT

FILED THIS 1st DAY OF August, 2012 AT 10:47 A.M. IN BOOK 15 OF RECORDS OF SURVEYS, AT PAGE 105-109 AT THE REQUEST OF THE COUNTY SURVEYOR.

FEE: 1400
KATHLEEN WILLIAMS
COUNTY RECORDER
BY *Jan Clark*
DEPUTY

DOC. No: 2012-0804940

DGA&V LAND SURVEYOR'S

11448 SMITH RD.
MARYSVILLE, CA. 95901
530-742-5033

BILL SNOW 775-787-8420

RECORD OF SURVEY

SECTIONS 19, 27, 28, 29 T23N, R6E, MDM
PLUMAS COUNTY, CALIFORNIA
FOR
U.S.D.A. PLUMAS NATIONAL FOREST
159 LAWRENCE ST
QUINCY, CA. 95971

DRAWN BY: B. SNOW DATE: DECEMBER 2011 SHEET 1 OF 4