

NOTES:

- 1) I RETRACE THE LOCATION OF THE COUNTY ROAD FROM THE DATA SHOWN ON THE (S) MAP, AND THE (D,D2) DATA.
- 2) I RETRACE THE LOCATION OF "LAKE VIEW DRIVE" FROM THE FOUND RECORD MONUMENTS PER (R) AND FIND THAT THE LOCATION OF THE COUNTY ROAD PER THE (R) MONUMENTS IS $\pm 0.4'$ TO $0.7'$ EASTERLY OF THE (S) & (D) RETRACED LOCATION. IT IS MY OPINION THAT THE (R) LOCATION FOR THE COUNTY ROAD IS IN ERROR. NOTE THE ERROR IN DISTANCE ALONG THE NORTH LINE OF LOT 1 (R) PROJECTED TO THE COUNTY ROAD WHEN COMPARED WITH THE (S) AND (D) DISTANCE.
- 3) BK. 164 O.R. PG. 215 CONVEYS A 60.00' WIDE EASEMENT FOR COUNTY ROAD TO THE COUNTY OF PLUMAS, THE ALIGNMENT OF WHICH, DOES NOT APPEAR TO BE COINCIDENT WITH THE CENTERLINE AND THE PROPERTY LINE AS DESCRIBED IN (D,D2) OR AS SHOWN ON (S). EXAMINATION OF (S3) DISCLOSES THAT THE CENTERLINE OF THE COUNTY EASEMENT IS AS SHOWN ON THE (S3) MAP. HOWEVER, THE (S3) MAP SHOWS THAT THE ROAD IS NOT CENTERED UPON THE COURSES SHOWN ON THE (S3) MAP AND AS WERE USED IN THE EASEMENT DEED. I HOLD THE CENTERLINE ALIGNMENT AS DETERMINED BY K.E. SOULE AS THE BEST FIT TO THE ROAD AS SAID ROAD EXISTED IN 1966.
- 4) PARCELS 1 AND 2 PER (D2) ARE SUBJECT TO A RESERVATION FOR "ALL EASEMENTS AND RIGHT OF WAYS FOR EXISTING ROADS, DITCHES, CANALS, DRAINS, PIPELINES AND OTHER PURPOSES", THE EXISTENCES OF ALL ITEMS, EXCEPTING THE COUNTY ROAD, DO NOT APPEAR TO HAVE EVER BEEN ESTABLISHED.
- 5) THESE LANDS MAY BE SUBJECT TO AN EASEMENT IN FAVOR OF FEATHER RIVER PINE MILLS FOR ROADS AND FOR FUTURE ROADS, THE LOCATION OF NEITHER BEING DEFINED FOR LOCATION. SEE BK. 1098 O.R. PG. 61
- 6) THESE LANDS MAY BE SUBJECT TO EASEMENTS IN FAVOR OF "TRUST INDENTURE" FOR THE EXPLORATION OF GAS AND MINERALS AND FOR PIPELINES PER BK. 97 O.R. PG. 67.
- 7) BK. 187 O.R. PG. 737 GRANTS TO OROVILLE WYANDOTTE IRRIGATION DISTRICT (NOW SOUTH FEATHER WATER AND POWER) AN EASEMENT FOR SPECIFIC PURPOSES AND GRANTS UNTO THE OWNERS OF THE ADJACENT LANDS (NOW STARR) AN EASEMENT OVER LANDS ADJACENT THERETO FOR PEDESTRIAN USE, FLOATING DOCKS, RAMPS, ETC. SEE DOCUMENT FOR DETAILS AND AGREEMENT. THE WESTERLY LIMIT LINE OF THIS EASEMENT IS ILL-DEFINED AND CANNOT BE DEFINITELY LOCATED. IT IS NOTED THAT THE EASEMENTS APPEAR TO BE APPURT-ENANT TO ONLY PARCELS 1 & 3 OF (D3).
- 8) RESULTANT PARCELS "A", "B" AND "C" AS SHOWN ON THIS MAP WERE APPROVED BY PLUMAS COUNTY ON JULY 11, 2012. ALL UNDERLYING LOT LINES WERE EXTINGUISHED. SEE PLUMAS COUNTY OFFICIAL RECORDS DOCUMENT NUMBER 2012-0004719.

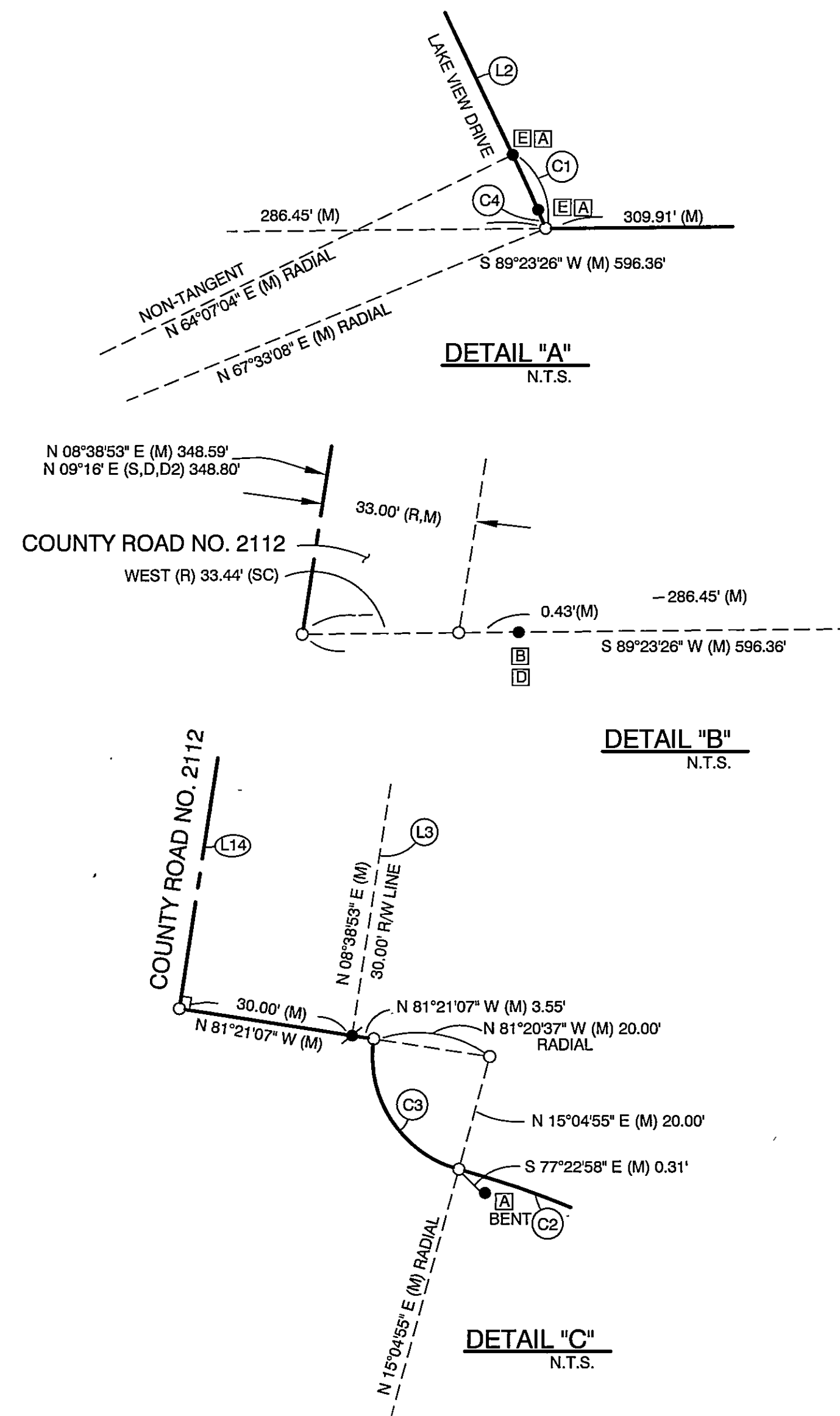
CURVE TABLE			
CURVE	DELTA	RADIUS	LENGTH
C1 (R)	3°25'50"	230.00'	13.77'
C1 (M)	3°25'00"	229.94'	13.71'
C1 + C4 (M)	3°26'04"	229.94'	13.78'
C2 (R)	49°20'28"	158.71'	136.68'
C2 (M)	49°20'28"	158.67'	136.64'
C3 (R)	83°34'28"	20.00'	29.17'
C3 (M)	83°34'27"	20.00'	29.17'
C4 (M)	00°01'04"	229.94'	0.07'

PIPE TO PIPE
PIPE TO P.L.

LEGEND

- FOUND MONUMENT AS DESCRIBED
- ⚡ SET 1/2" REBAR TAGGED L.S. 4208, OR AS NOTED
- POINT DETERMINED ONLY
- ✖ SET 5/8" REBAR AND 3" ALUMINUM CAP, TAGGED L.S. 4208
- (M) MEASURED N.O.R. ----- NOT OF RECORD
- (C) CALCULATED P.I.P. ----- PLUGGED IRON PIPE
- (S.F.N.F.) SEARCHED FOR BUT NOT FOUND
- (R) BOOK 4 MAPS, PAGES 69 & 70
- (R2) BOOK 14 RECORDS OF SURVEY, PAGES 108 THRU 113
- (R3) BOOK 5 RECORDS OF SURVEY, PAGE 27
- (R4) BOOK 8 PARCEL MAPS, PAGE 106
- (S) UNRECORDED PLAT BY K.E. SOULE, LS 2513 DATED 1962, ON FILE IN THE OFFICE OF GDA AS SECTION PLAT "32-22-9".
- (S2) UNRECORDED PLAT BY K.E. SOULE, LS 2513 DATED AUG. 1966, ON FILE IN THE OFFICE OF GDA AS MAP "M-190B".
- (S3) UNRECORDED PLAT BY BECHTEL CORPORATION, "2AF15", ON FILE IN THE OFFICE OF GDA AS MAP "M-161-F".
- (D) BOOK 164 OFFICIAL RECORDS PAGE 1403
- (D2) BOOK 161 OFFICIAL RECORDS PAGE 816
- (D3) RECORDER'S DOCUMENT NUMBER 2010-0006544
- (D4) BOOK 187 OFFICIAL RECORDS PAGE 737

LINE TABLE		
LINE	DIRECTION	LENGTH
L1(S,D,D2)	N 65°43' E	63.38'
L1(M)	N 65°06'25" E	63.36'
L2(R)	N 24°58' W	196.73'
L2(M)	N 25°34'37" W	196.52'
L3(M)	N 08°38'53" E	43.51'
L4(M)	N 05°20'07" W	31.56'
L5(S2)	N 39°29'00" E	115.78'
L5(M)	N 38°51'53" E	115.75'
L6(S2)	N 49°04'00" E	208.80'
L6(M)	N 48°26'53" E	208.75'
L7(S2)	N 24°51'00" E	65.81'
L7(M)	N 24°13'53" E	65.79'
L8(S2)	N 01°51'00" E	129.01'
L8(M)	N 01°13'53" E	128.98'
L9(S2)	N 20°28'00" W	168.31'
L9(M)	N 21°05'07" W	168.27'
L10(S2)	N 36°54'00" W	266.50'
L10(M)	N 37°31'07" W	266.43'
L11(S,S2)	N 66°22'00" E	173.10'
L11(M)	N 65°44'53" E	173.05'
L12(S,S2)	N 45°55'00" E	273.00'
L12(M)	N 45°17'53" E	272.93'
L13(S,S2)	N 31°57'00" W	
L13(M)	N 32°34'07" W	77.64'
L14(M)	N 08°38'53" E	40.12'
L15(M)	N 32°34'07" W	125.67'
L16(M)	N 84°39'53" E	30.00'



RECORD OF SURVEY

A PORTION OF GOVERNMENT LOTS 3 AND 4, AND A PORTION OF THE W 1/2, SECTION 32, T22N, R9 E, M.D.M., PLUMAS COUNTY, CALIFORNIA.

FOR
JOHN STARR

SHEET 2 OF 2