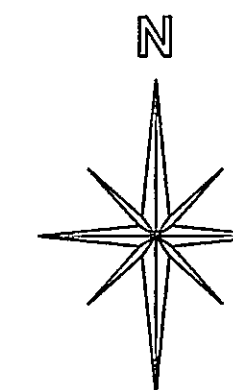


CORNER COORDINATE TABLE

CORNER NO.	NORTHING	EASTING
13	1815374.370	6744030.952
14	1815288.292	6752067.902
16	1815188.550	6757439.450
19	1809990.708	6752400.764
20	1820606.221	6749153.471
21	1820586.762	6751849.501
22	1819244.417	6749213.934
23	1819262.144	6751904.101
24	1815252.064	6749391.190
25	1817828.923	6746649.912
26	1815215.837	6746714.478
27	1820441.976	6746585.325
28	1826000.997	6741183.552
29	1823313.268	6741304.709
30	1820627.004	6741423.893
31	1824657.132	6741244.131
32	1824582.984	6742597.042
33	1823248.518	6742637.760
34	1823183.962	6743966.813
35	1823119.828	6745287.193
36	1821823.811	6745294.395
37	1821748.834	6746596.449
38	1825834.748	6743914.161
39	1820613.587	6744017.868
40	1823055.693	6746607.573
41	1824417.589	6746619.166
42	1841403.500	6747139.349
43	1825699.743	6752046.312
44	1825684.577	6749338.067
45	1812603.980	6746939.956
46	1809992.114	6747165.428

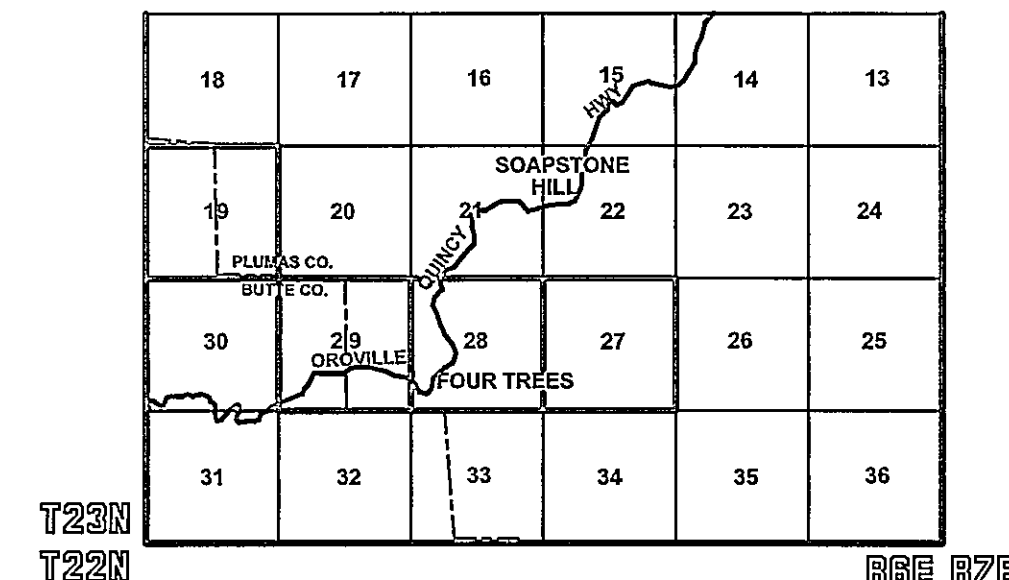


SCALE
1" = 1000 FEET
0 1000 2000

LEGEND

- FOUND BLM OR GLO CORNER
- CALCULATED CORNER
- CORNER NOTE NUMBER
- SET STANDARD U.S. FOREST SERVICE DRIVE-IN MONUMENT (BEARING TREES AS NOTED)
- PROPERTY BOUNDARY MARKED AND POSTED
- FD CORNER AS NOTED
- (R1) GLO 1875 VON SCHMIDT
- (R2) 6RS78
- (R3) GLO 1938 WILSON

VICINITY MAP
NOT TO SCALE



GENERAL NOTES

A STANDARD UNITED STATES FOREST SERVICE (USFS) DRIVE-IN MONUMENT IS A 5/8" DIAMETER ALUMINUM ROD WITH A 3-1/4" ALUMINUM CAP EDGE-MARKED WITH THE USFS LOGO.

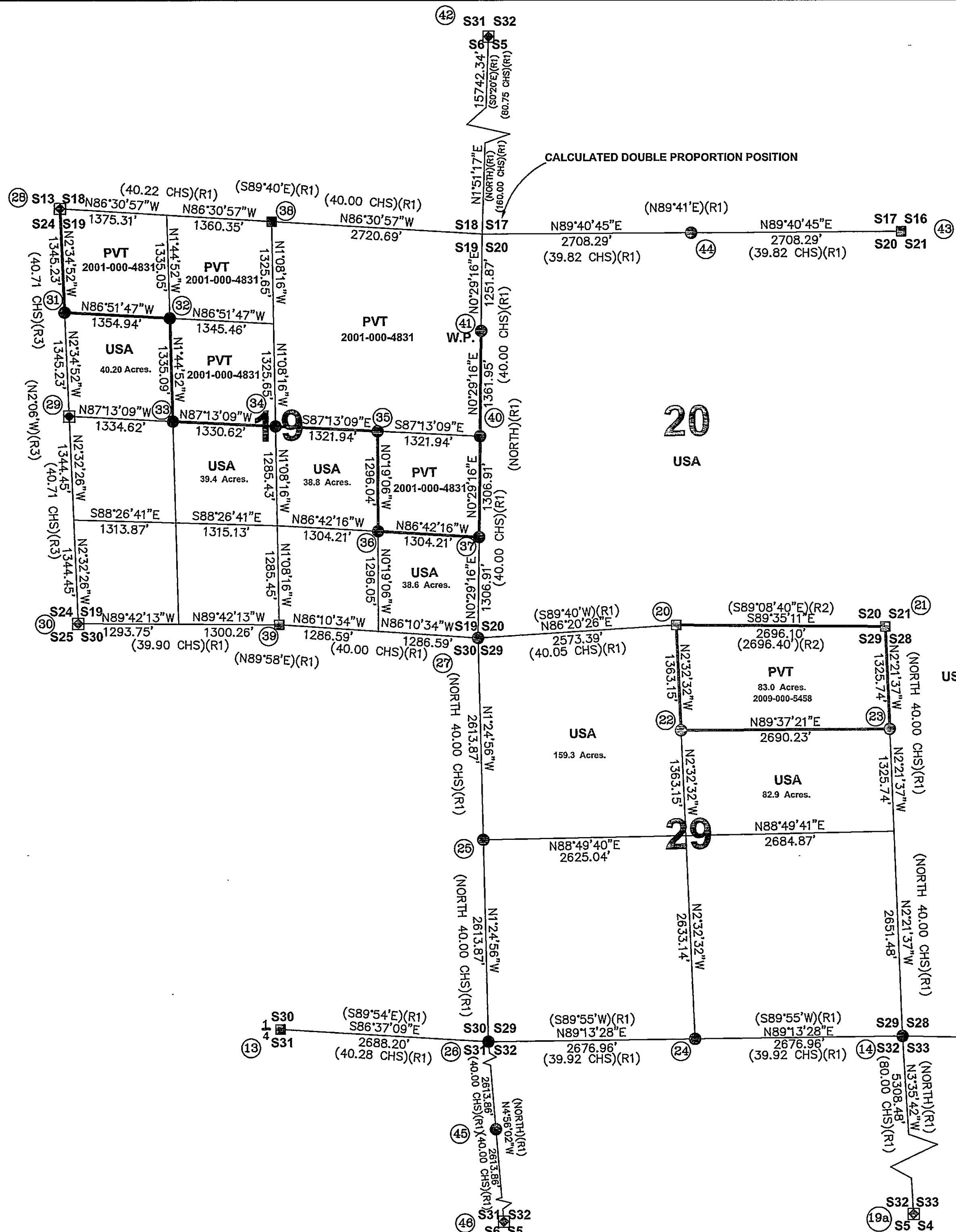
ALL USFS CORNERS SET ON THIS SURVEY WERE STAMPED AS PER BLM MANUAL OF INSTRUCTIONS.

A STANDARD BUREAU OF LAND MANAGEMENT (BLM) MONUMENT IS A 2-1/2" DIAMETER STEEL PIPE, 28" LONG WITH A 3-1/2" BRASS CAP EDGE-MARKED WITH THE BLM LOGO.

ALL BLM CORNERS USED ON THIS SURVEY WERE VERIFIED AND ACCEPTED BY ME, HOWEVER, THE BLM BEARING TREES WERE NOT TIED BUT WERE CHECKED IN THE FIELD.

SHEET INDEX

- SECTIONS 28 & 27 T23NR6E MDM _____ 1 OF 4
- COR. NOTES S28 S27 T23NR6E MDM _____ 2 OF 4
- SECTIONS 19 & 29 T23NR6E MDM _____ 3 OF 4
- COR. NOTES S19 S29 T23NR6E MDM _____ 4 OF 4



DGA&V LAND SURVEYOR'S
11448 SMITH RD.
MARYSVILLE, CA. 95901
530-742-5033
BILL SNOW 775-787-8420

RECORD OF SURVEY
SECTIONS 19,27,28,29 T23N,R6E,MDM
PLUMAS COUNTY, CALIFORNIA
FOR
U.S.D.A. PLUMAS NATIONAL FOREST
159 LAWRENCE ST
QUINCY, CA. 95971
DRAWN BY: B. SNOW DATE: DECEMBER 2011 SHEET 3 OF 4