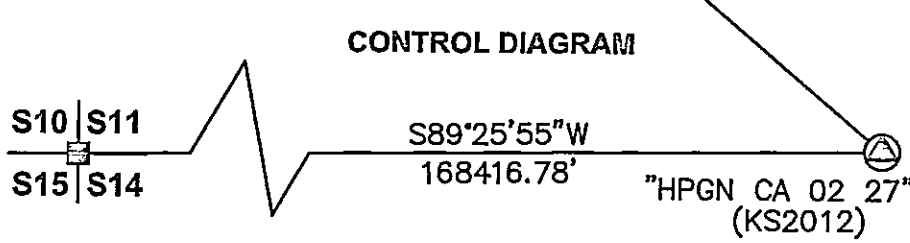
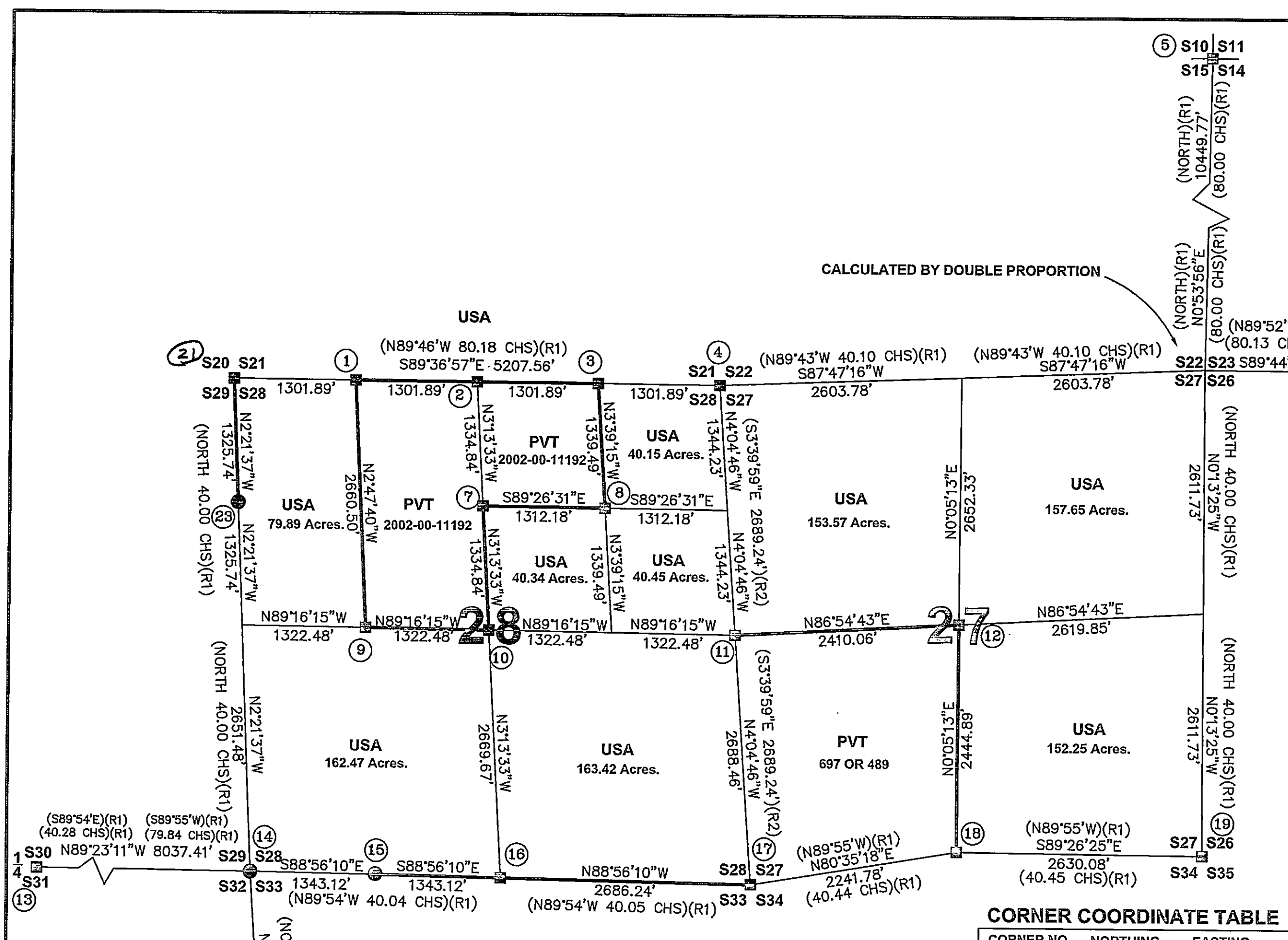
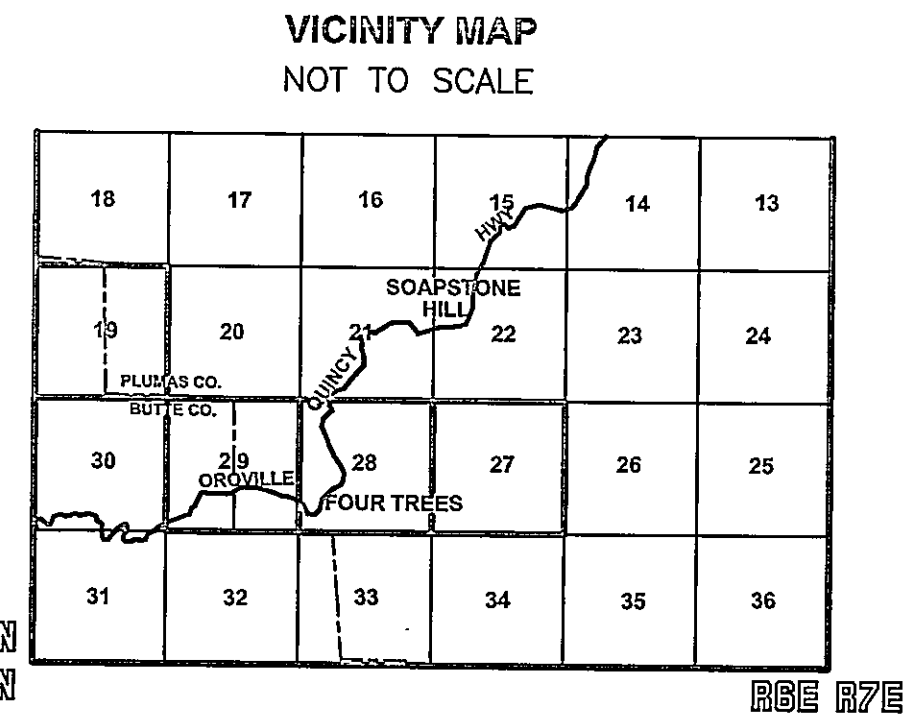


BASIS OF BEARINGS
 MEASURED BEARINGS AND DISTANCES ARE GRID BASED ON THE CALIFORNIA COORDINATE SYSTEM OF 1983 (CCS83), ZONE 1.
 @ AT THE NE CORNER OF SECTION 15 IS 0°26'03" TO GET TO TRUE NORTH ROTATE TO RIGHT 0°26'03" MULTIPLY GRID DISTANCES BY .999776619 TO GET GROUND DISTANCES.
 CONTROL WAS ESTABLISHED WITH G.P.S., TOPCON HIPER, DUAL FREQUENCY. CONTROL WAS ESTABLISHED USING THE FOLLOWING STATIONS:
 "HPGN CA 02 27" (KS2012) (EPOCH DATE 2007)
 LATITUDE: 39°51'14.41797" N 1832871.45 N
 LONGITUDE: 120°41'06.41349" W 6930833.08 E
 "QUINCY NCMN RM 3" (AE2770) (EPOCH 2007)
 LATITUDE: 39°58'29.74784" N 1875934.67 N
 LONGITUDE: 120°56'40.40623" W 6857465.53 E
 LATITUDES AND LONGITUDES AS PUBLISHED BY NATIONAL GEODETIC SURVEYS (NGS) IN JANUARY 17, 2011



GENERAL NOTES
 A STANDARD UNITED STATES FOREST SERVICE (USFS) DRIVE-IN MONUMENT IS A 5/8" DIAMETER ALUMINUM ROD WITH A 3-1/4" ALUMINUM CAP EDGE-MARKED WITH THE USFS LOGO.
 ALL USFS CORNERS SET ON THIS SURVEY WERE STAMPED AS PER THE BLM MANUAL OF INSTRUCTIONS.
 A STANDARD BUREAU OF LAND MANAGEMENT (BLM) MONUMENT IS A 2-1/2" DIAMETER STEEL PIPE, 28" LONG WITH A 3-1/2" BRASS CAP EDGE-MARKED WITH THE BLM LOGO.
 ALL BLM CORNERS USED ON THIS SURVEY WERE VERIFIED AND ACCEPTED BY ME, HOWEVER, THE BLM BEARING TREES WERE NOT TIED BUT WERE CHECKED IN THE FIELD.



CORNER COORDINATE TABLE

CORNER NO.	NORTHING	EASTING
13	1815374.370	6744030.952
19A	1809990.260	6752400.764
6	1820707.325	6772621.623
11	1817870.195	6757248.198
2	1820569.302	6754453.224
10	1817903.861	6754603.450
9	1817920.694	6753281.076
1	1820578.032	6753151.362
3	1820560.571	6755755.085
7	1819236.581	6754528.337
8	1819223.800	6755840.454
5	1831201.351	6762424.576
12	1818000.025	6759654.762
4	1820551.841	6757056.946
19	1815529.448	6762281.007
18	1815555.142	6759651.057
14	1815288.292	6752067.902
15	1815263.354	6753410.790
16	1815238.421	6754753.676
17	1815188.550	6757439.450

SHEET INDEX

SECTIONS 28 & 27 T23NR6E MDM — 1 OF 4
 COR. NOTES S28 S27 T23NR6E MDM — 2 OF 4
 SECTIONS 19 & 29 T23NR6E MDM — 3 OF 4
 COR. NOTES S19 S29 T23NR6E MDM — 4 OF 4

LEGEND

- FOUND BLM CORNER
- + CALCULATED CORNER
- ⑩ CORNER NOTE NUMBER
- ⊙ SET STANDARD U.S. FOREST SERVICE DRIVE-IN MONUMENT (BEARING TREES AS NOTED)
- PROPERTY BOUNDARY MARKED AND POSTED
- FD CORNER AS NOTED
- (R1) GLO 1875 VON SCHMIDT
- (R2) GRS78
- (R3) BLM 1981 HAMILTON



SURVEYOR'S STATEMENT
 THIS MAP CORRECTLY REPRESENTS A SURVEY MADE BY ME OR UNDER MY DIRECTION IN CONFORMANCE WITH THE REQUIREMENTS OF THE PROFESSIONAL LAND SURVEYORS' ACT AT THE REQUEST OF PLUMAS NATIONAL FOREST IN
JULY 26, 2012
 WILLIAM G. SNOW LS 5623

COUNTY SURVEYOR'S STATEMENT
 THIS MAP HAS BEEN EXAMINED IN ACCORDANCE WITH SECTION 8766 OF THE PROFESSIONAL LAND SURVEYORS' THIS 25th DAY OF July 2012.
 BY R. Tom Hunter
 ROBERT THOMAS HUNTER
 PLUMAS COUNTY SURVEYOR RCE 30515

RECORDER'S STATEMENT
 FILED THIS 1st DAY OF August, 2012 AT 10:47 P.M. IN BOOK 15 OF RECORDS OF SURVEYS, AT PAGE 105-109 AT THE REQUEST OF THE COUNTY SURVEYOR.
 FEE: 14.00
 KATHLEEN WILLIAMS
 COUNTY RECORDER
 DOC. No: 2012-0004940 BY: [Signature] DEPUTY

DGA&V LAND SURVEYOR'S
 11448 SMITH RD.
 MARYSVILLE, CA. 95901
 530-742-5033
 BILL SNOW 775-787-8420

RECORD OF SURVEY
 SECTIONS 19, 27, 28, 29 T23N, R6E, MDM
 PLUMAS COUNTY, CALIFORNIA
 FOR
 U.S.D.A. PLUMAS NATIONAL FOREST
 159 LAWRENCE ST
 QUINCY, CA. 95971
 DRAWN BY: B. SNOW DATE: DECEMBER 2011 SHEET 1 OF 4