

SCALE

1" = 600 FEET

0 600 1200

BASIS OF BEARINGS

MEASURED BEARINGS AND DISTANCES ARE GRID BASED ON THE CALIFORNIA COORDINATE SYSTEM OF 1983 (CCS83), ZONE 1.

0 AT THE SE CORNER OF SECTION 11 IS 0°50'54" TO GET TO TRUE NORTH ROTATE TO RIGHT 0°50'54" MULTIPLY GRID DISTANCES BY .9998356477 TO GET GROUND DISTANCES.

CONTROL WAS ESTABLISHED WITH G.P.S., TOPCON HIPER, DUAL FREQUENCY. CONTROL WAS ESTABLISHED USING THE FOLLOWING STATIONS:

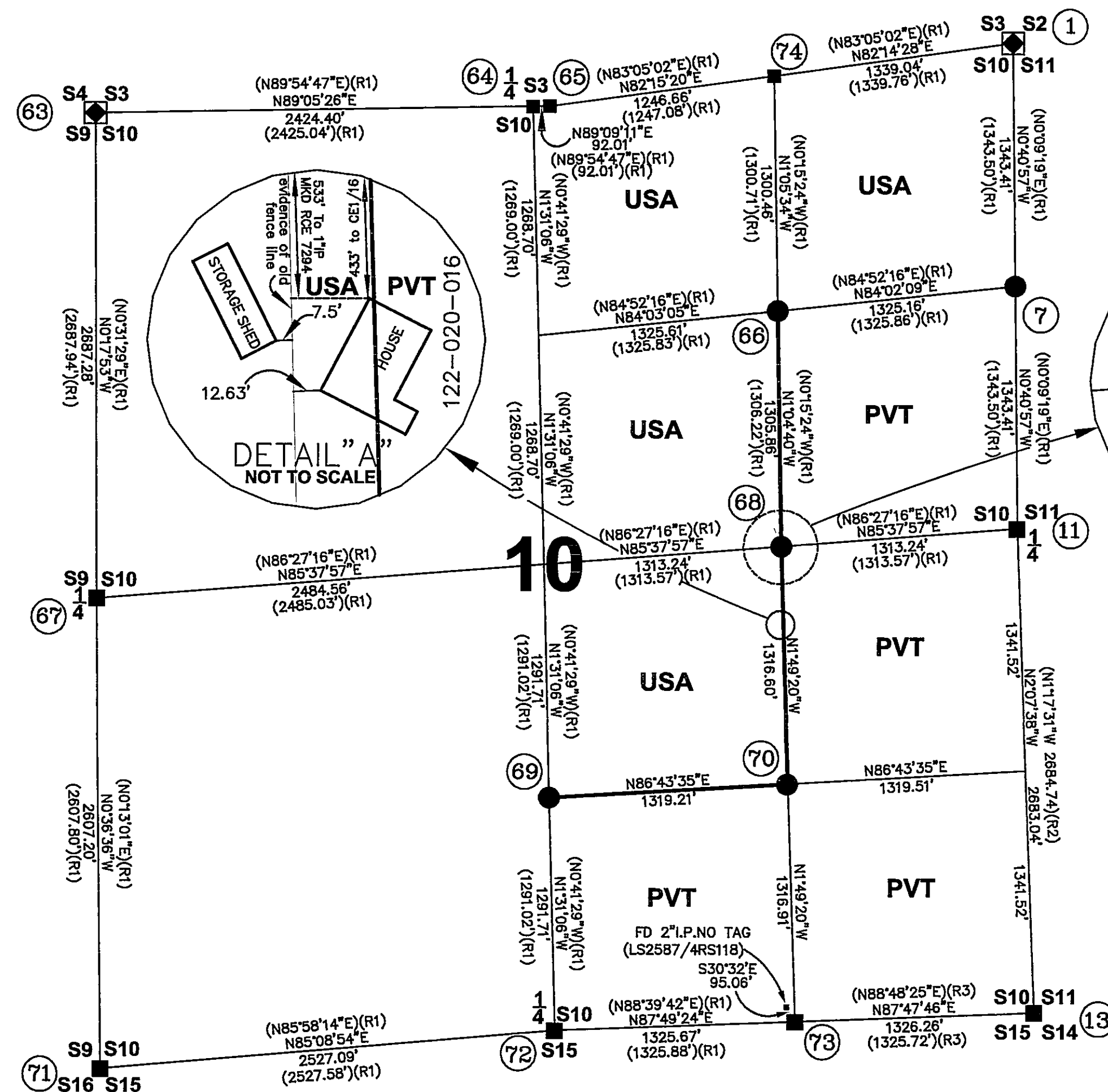
"HPGN CA 02 27" (KS2012) (EPOCH DATE 2007)
LATITUDE: 39°51'14.41797" N 1832871.45 N
LONGITUDE: 120°41'06.41349" W 6930833.08 E

"QUINCY NCMN RM 3" (AE2770) (EPOCH 2007)
LATITUDE: 39°58'29.74784" N 1875934.67 N
LONGITUDE: 120°56'40.40623" W 6857465.53 E

LATITUDES AND LONGITUDES AS PUBLISHED BY NATIONAL GEODETIC SURVEYS (NGS) IN JANUARY 17, 2011

NOTE

ALL BLM CORNERS USED ON THIS SURVEY WERE VERIFIED AND ACCEPTED BY ME, HOWEVER, THE BLM BEARING TREES WERE NOT TIED BUT WERE CHECKED IN THE FIELD AND COMPARED WITH THE BLM FIELD NOTES.



- ◆ FOUND BLM CORNER
- ├ CALCULATED CORNER
- ⑩ CORNER NOTE
- SET STANDARD U.S. FOREST SERVICE DRIVE-IN MONUMENT (BEARING TREES AS NOTED)
- PROPERTY BOUNDARY MARKED AND POSTED
- FD CORNER AS NOTED

(R1) 12RS143
(R2) 10PM97
(R3) 4RS32

GENERAL NOTES

A STANDARD UNITED STATES FOREST SERVICE (USFS) DRIVE-IN MONUMENT IS A 5/8" DIAMETER ALUMINUM ROD WITH A 3-1/4" ALUMINUM CAP EDGE-MARKED WITH THE USFS LOGO.

A STANDARD BUREAU OF LAND MANAGEMENT (BLM) MONUMENT IS A 2-1/2" DIAMETER STEEL PIPE, 28" LONG WITH A 3-1/2" BRASS CAP EDGE-MARKED WITH THE BLM LOGO.

SHEET INDEX

SECTION 11 T23NR11E MDM	1 OF 11
SECTION 6 & 7 T23NR12E MDM	2 OF 11
SECTION 2 T22NR11E MDM	3 OF 11
SECTION 12 T23NR11E MDM	4 OF 11
SECTION 27 & 26 T23NR11E MDM	5 OF 11
SECTION 10 T23NR11E MDM	6 OF 11
CORNER NOTES S11	7 OF 11
CORNER NOTES S6 S7 S12 S2	8 OF 11
CORNER NOTES S27 S26	9 OF 11
CORNER NOTES S10	10 OF 11
BLM FIELD NOTES S27 S26	11 OF 11

CORNER NO.	NORTHING	EASTING
1	1842412.654	6920411.416
3	1842409.022	6923089.745
5	1842404.351	6924452.612
7	1841069.340	6920427.416
11	1839726.025	6920443.416
13	1837044.841	6920543.008
14	1837055.448	6923210.956
63	1842024.043	6915333.249
64	1842062.525	6917757.342
65	1842063.885	6917849.342
66	1840931.650	6919109.431
67	1839336.802	6915347.228
68	1839626.017	6919133.994
69	1838234.749	6917858.796
70	1838310.083	6919175.858
71	1836729.751	6915374.983
72	1836943.488	6917893.021
73	1836993.840	6919217.732
74	1842231.877	6919084.630

DGA&V LAND SURVEYOR'S

11448 SMITH RD.
MARYSVILLE, CA. 95901
530-671-6375

BILL SNOW 775-787-8420

RECORD OF SURVEY

SECTION 10, T23N R11E, MDM
PLUMAS COUNTY, CALIFORNIA

FOR

U.S.D.A. PLUMAS NATIONAL FOREST
159 LAWRENCE ST
QUINCY, CA. 95971

DRAWN BY: B. SNOW DATE: DECEMBER, 2011 SHEET 6 OF 11