

CORNER NOTES

- [1] CENTER 1/4 CORNER SECTION 22, FOUND A STANDARD 3 1/4 INCH USFS ALUMINUM CAP MARKED LS 6501, C 1/4-S22, 2005 (D) FROM WHICH:
 EASTERLY CORNER OF WELL HOUSE BEARS S 37-30 W, A DISTANCE OF 15.0 FEET (D&M)
 SOUTHERLY CORNER OF WELL HOUSE BEARS S 87-30 W, A DISTANCE OF 17.2 FEET (D&M)
 PINK MAGNET, 10 INCHES DEEP S 14 1/2° E, A DISTANCE OF 8.4 FEET (D) NOT RECOVERED THIS SURVEY
 BLUE MAGNET, 10 INCHES DEEP S 72 1/2° W, A DISTANCE OF 7.0 FEET (D) NOT RECOVERED THIS SURVEY
- [2] WITNESS CORNER CENTER NORTH 1/16 SECTION 22, FOUND A STANDARD 3 1/4 INCH USFS ALUMINUM CAP MARKED LS 6501, W.C., N 1/16, C/C, S 22, 2005 FOR A WITNESS CORNER ON LINE 13.00 FEET NORTHERLY ON CENTER OF SECTION LINE (D) FROM WHICH:
 7 INCH DOUGLAS FIR BEARS S 41-30 W, A DISTANCE OF 9.6 FEET (D&M)
 12 INCH DOUGLAS FIR BEARS N 63-30 W, A DISTANCE OF 18.4 FEET (D&M)

NOTES:

1. THIS 45 FOOT WIDE EASEMENT WAS ESTABLISHED FROM THE DESCRIBED CENTERLINE PER 120 O.R. 74 (F), WESTERLY 122 FEET (N 86°17' 23" E, 122') AND SOUTHERLY 105 FEET (S 01°30'04" E, 105') ALONG THE CENTER OF SECTION LINES WITH A RADIUS OF 202.5 FEET, USING THE LOCATION FOR THE CENTER OF SECTION SHOWN ON THE CALIFORNIA DIVISION OF HIGHWAY MAP (A), CORNER NOTE [8] AND [9] - THE SIDELINES OF SAID EASEMENT SHOWN HEREON HAVE BEEN SHORTENED OR EXTENDED TO INTERSECT THE EAST LINE OF RESULTANT PARCEL 1. THIS DEFINITION ENCOMPASSES THE EXISTING ROAD DESCRIBED (F).

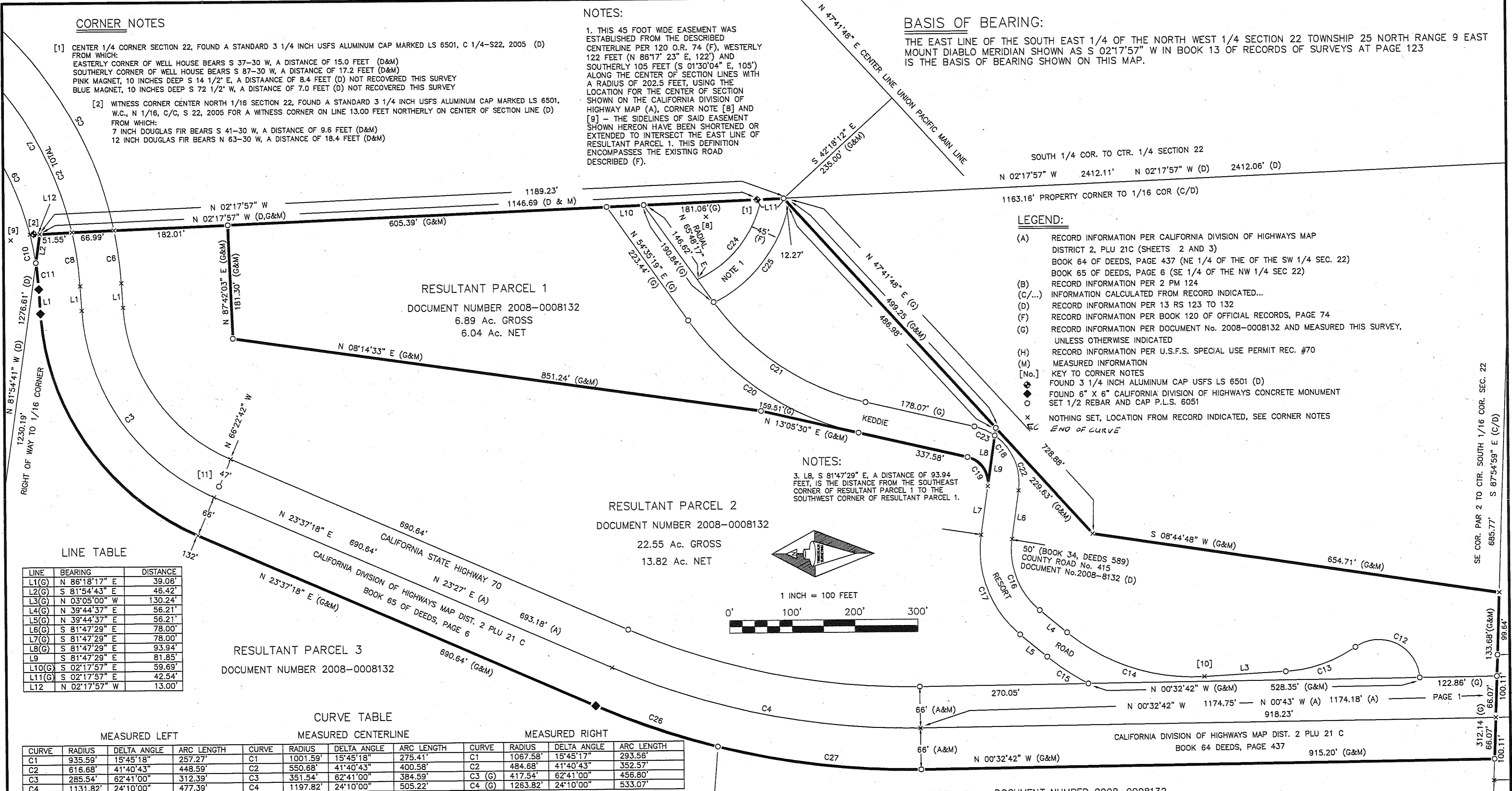
BASIS OF BEARING:

THE EAST LINE OF THE SOUTH EAST 1/4 OF THE NORTH WEST 1/4 SECTION 22 TOWNSHIP 25 NORTH RANGE 9 EAST MOUNT DIABLO MERIDIAN SHOWN AS S 02°17'57" W IN BOOK 13 OF RECORDS OF SURVEYS AT PAGE 123 IS THE BASIS OF BEARING SHOWN ON THIS MAP.

SOUTH 1/4 COR. TO CTR. 1/4 SECTION 22
 N 02°17'57" W 2412.11' N 02°17'57" W (D) 2412.06' (D)
 1163.16' PROPERTY CORNER TO 1/16 COR (C/D)

LEGEND:

- (A) RECORD INFORMATION PER CALIFORNIA DIVISION OF HIGHWAYS MAP DISTRICT 2, PLU 21C (SHEETS 2 AND 3) BOOK 64 OF DEEDS, PAGE 437 (NE 1/4 OF THE SW 1/4 SEC. 22) BOOK 65 OF DEEDS, PAGE 6 (SE 1/4 OF THE NW 1/4 SEC 22)
- (B) RECORD INFORMATION PER 2 PM 124
- (C/...) INFORMATION CALCULATED FROM RECORD INDICATED...
- (D) RECORD INFORMATION PER 13 RS 123 TO 132
- (F) RECORD INFORMATION PER BOOK 120 OF OFFICIAL RECORDS, PAGE 74
- (G) RECORD INFORMATION PER DOCUMENT No. 2008-0008132 AND MEASURED THIS SURVEY, UNLESS OTHERWISE INDICATED
- (H) RECORD INFORMATION PER U.S.F.S. SPECIAL USE PERMIT REC. #70
- (M) MEASURED INFORMATION
- [No.] KEY TO CORNER NOTES
 FOUND 3 1/4 INCH ALUMINUM CAP USFS LS 6501 (D)
 FOUND 6" X 6" CALIFORNIA DIVISION OF HIGHWAYS CONCRETE MONUMENT SET 1/2 REBAR AND CAP P.L.S. 6051
 NOTHING SET, LOCATION FROM RECORD INDICATED, SEE CORNER NOTES
 END OF CURVE



LINE TABLE

LINE	BEARING	DISTANCE
L1(G)	N 86°18'17" E	39.06'
L2(G)	S 81°54'43" E	46.42'
L3(G)	N 03°05'00" W	130.24'
L4(G)	N 39°44'37" E	56.21'
L5(G)	N 39°44'37" E	56.21'
L6(G)	S 81°47'29" E	78.00'
L7(G)	S 81°47'29" E	78.00'
L8(G)	S 81°47'29" E	93.94'
L9	S 81°47'29" E	81.85'
L10(G)	S 02°17'57" E	59.69'
L11(G)	S 02°17'57" E	42.54'
L12	N 02°17'57" W	13.00'

CURVE TABLE

MEASURED LEFT				MEASURED CENTERLINE				MEASURED RIGHT			
CURVE	RADIUS	DELTA ANGLE	ARC LENGTH	CURVE	RADIUS	DELTA ANGLE	ARC LENGTH	CURVE	RADIUS	DELTA ANGLE	ARC LENGTH
C1	935.59'	15°45'18"	257.27'	C1	1001.59'	15°45'18"	275.41'	C1	1067.58'	15°45'17"	293.56'
C2	616.68'	41°40'43"	448.59'	C2	550.68'	41°40'43"	400.58'	C2	484.68'	41°40'43"	352.57'
C3	285.54'	62°41'00"	312.39'	C3	351.54'	62°41'00"	384.59'	C3 (G)	417.54'	62°41'00"	456.80'
C4	1131.82'	24°10'00"	477.39'	C4	1197.82'	24°10'00"	505.22'	C4 (G)	1263.82'	24°10'00"	533.07'

RECORD LEFT				RECORD CENTERLINE				RECORD RIGHT			
CURVE	RADIUS	DELTA ANGLE	ARC LENGTH	CURVE	RADIUS	DELTA ANGLE	ARC LENGTH	CURVE	RADIUS	DELTA ANGLE	ARC LENGTH
C1 (B)	934	15°46'	257.02'	C1 (B)	1000'	15°46'	275.18'	C1 (B)	1066'	15°46'	293.34'
C2 (A)	616'	41°32'30"	448.42'	C2 (A)	550'	41°42'30"	400.37'	C2 (A)	484'	41°42'30"	352.33'
C3 (A)	284'	62°41'00"	310.70'	C3 (A)	350'	62°41'00"	382.91'	C3 (A)	416'	62°41'00"	455.12'
C4 (A)	1134'	24°10'00"	478.31'	C4 (A)	1200'	24°10'00"	506.15'	C4 (A)	1266'	24°10'00"	533.98'

MEASURED EQUALS RECORD, UNLESS OTHERWISE INDICATED			
CURVR	RADIUS	DELTA ANGLE	ARC LENGTH
C5	616.68'	33°46'03"	363.45'
C6	616.68'	07°54'40"	85.15'
C7	550.68'	32°38'25"	313.71'
C8	550.68'	09°02'18"	86.87'
C9	484.68'	31°12'01"	263.93'
C10	484.68'	05°28'07"	46.26'
C11(G)	484.68'	05°00'36"	42.38'
C12(G)	65.00'	121°17'28"	137.60'
C13(G)	217.40'	31°31'13"	119.60'
C14(G)	315.00'	42°49'37"	235.45'
C15(G)	365.00'	12°22'56"	78.88'
C16(G)	125.00'	58°27'55"	127.55'
C17(G)	175.00'	58°27'55"	178.57'
C18(M)	92.00'	85°07'01"	136.67'(M)
C18(G)	92.00'	85°07'01"	136.37'(G)
C19(G)	42.00'	85°07'01"	62.39'
C20(G)	460.00'	41°29'48"	333.16'
C21(G)	410.00'	41°29'48"	296.94'
C22	92.00'	62°50'14"	100.90'
C23	92.00'	22°16'47"	35.77'
C24(C/F)	180'	53°53'12"	169.29'
C25(C/F)	225'	52°03'23"	204.42'
C26(G)	1263.82'	09°19'53"	205.83'
C27(G)	1263.82'	14°50'07"	327.24'

CORNER NOTES

- [8] CENTER 1/4 CORNER SECTION 22, (SOUTHEAST CORNER OF KEDDIE) LOCATION CALCULATED FROM (A) CALIFORNIA DIVISION OF HIGHWAYS MAP DISTRICT 2 PLU 21C S 86°34' E 760.12 FROM STATION "D2" 56+00.13 POC (A) S 86°17'23" E 760.12 FROM STATION "D2" 56+00.13 POC (C/A) POSITION IS N 18°09'42" W, A DISTANCE OF 86.05 FEET FROM CENTER 1/4 MONUMENT [1]
- [9] NE COR., SE1/4, NW 1/4, SEC. 22 (CN 1/16) (NORTHEAST CORNER OF KEDDIE) LOCATION CALCULATED FROM (A) CALIFORNIA DIVISION OF HIGHWAYS MAP DISTRICT 2 PLU 21C N 01°41'40" W 99.81 FROM STATION "Y2" 43+18.06 POC (A) N 01°30'04" W 99.81 FROM STATION "Y2" 43+18.06 POC (C/A) POSITION IS N 15°46'39" W, A DISTANCE OF 34.54 FEET FROM WITNESS CORNER MONUMENT [2]
- [10] NOTHING SET AT LOCATION SHOWN, SET NAIL AND TAG P.L.S. 6051 IN 4 INCH OAK AS WITNESS S 10°58'17" W, A DISTANCE OF 0.16 FEET.
- [11] SET 1/2 INCH REBAR AND CAP P.L.S. 6051, AS WITNESS CORNER, FROM WHICH PROPERTY LINE AND RIGHT OF WAY EC BEARS N 66°22'42" W, A DISTANCE OF 85.00 FEET.

RECORD OF SURVEY FOR KEDDIE INVESTMENTS LLC
 RESULTANT PARCELS 1 AND 2
 DOCUMENT NUMBER 2008-0008132
 WITHIN THE WEST 1/2 OF SECTION 22, T. 25N., R. 9E., M.D.M.
 PLUMAS COUNTY CALIFORNIA
 1 INCH = 100 FEET MARCH 2009
 Tibbedeaux Surveying
 P.O. Box 1980 - 565 Ridge St.
 Portola, CA 96122
 (530) 832-5772
 Job 2009-03 / 2009-08 SHEET 2 OF 2