

SEE NOTE 7

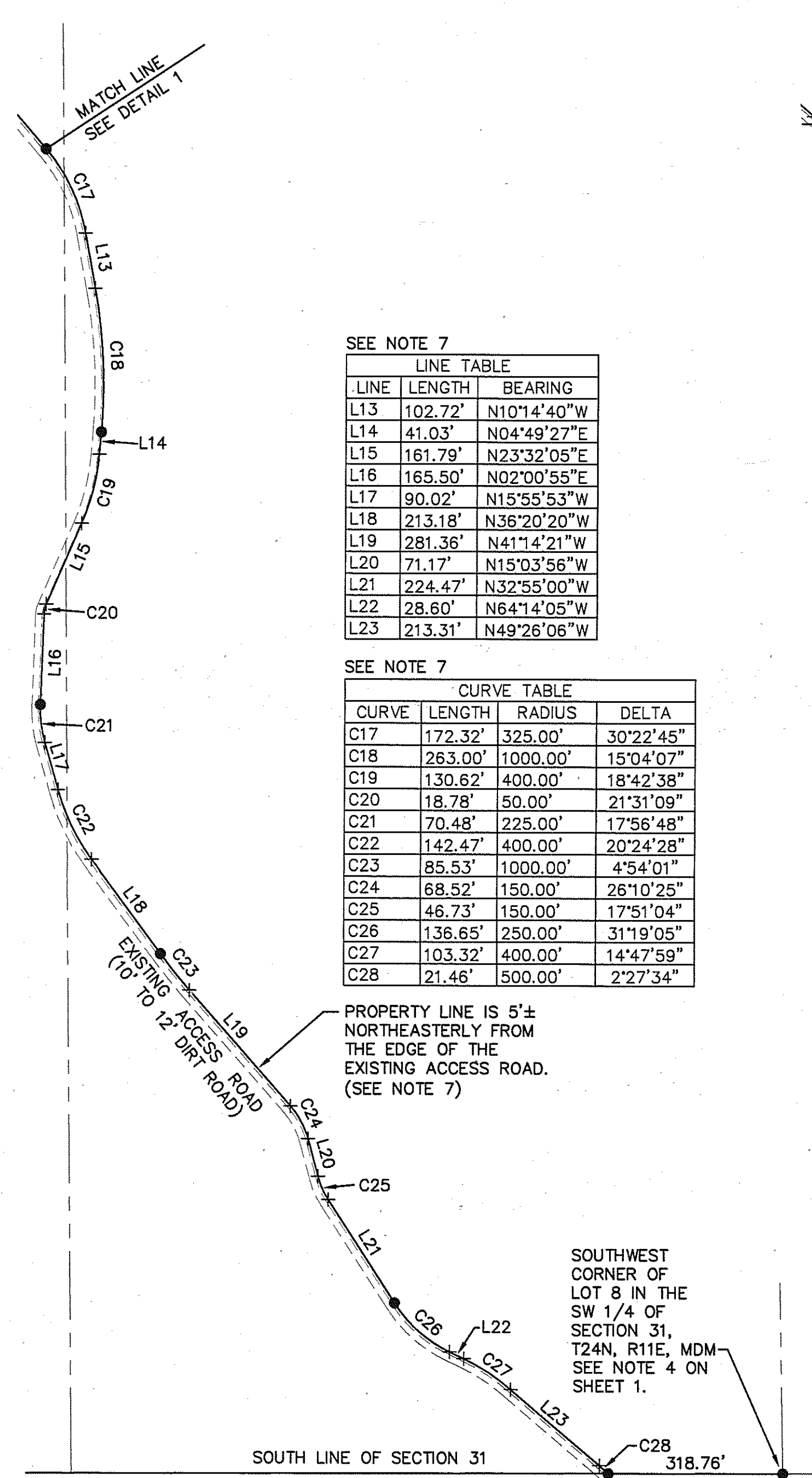
LINE	LENGTH	BEARING
L1	50.31'	N41°06'08"W
L2	40.62'	N47°42'47"W
L3	70.76'	N62°43'56"W
L4	251.25'	N44°19'31"W
L5	68.46'	N48°30'29"W
L6	86.15'	N45°21'38"W
L7	134.57'	N50°04'35"W
L8	154.77'	N24°39'15"W
L9	106.01'	N19°03'30"W
L10	93.01'	N57°32'53"W
L11	137.02'	N52°43'11"W
L12	109.88'	N40°37'25"W

SEE NOTE 7

CURVE	LENGTH	RADIUS	DELTA
C1	23.08'	200.00'	6°36'38"
C2	40.16'	100.00'	23°00'42"
C3	97.65'	700.00'	7°59'33"
C4	128.51'	400.00'	18°24'25"
C5	73.00'	1000.00'	4°10'58"
C6	4.12'	75.00'	3°08'51"
C7	8.23'	100.00'	4°42'57"
C8	88.74'	200.00'	25°25'20"
C9	78.13'	800.00'	5°35'45"
C10	148.48'	650.00'	13°05'17"
C11	46.67'	300.00'	8°54'46"
C12	47.83'	200.00'	13°42'09"
C13	50.78'	130.00'	22°22'53"
C14	136.31'	1000.00'	7°48'35"
C15	84.27'	1000.00'	4°49'43"
C16	126.67'	600.00'	12°05'45"

**DETAIL 1**  
SCALE: 1" = 200'

**NOTES:**  
7. THE EASTERLY EDGE OF THE EXISTING ACCESS ROAD SHOWN HEREON WAS LOCATED BY SURVEY. THE COMMON PROPERTY LINE BETWEEN PARCEL 1A AND PARCEL 2A WAS THEN CALCULATED AT A POSITION APPROXIMATELY 5 FEET NORTHEASTERLY OF THE EASTERLY EDGE OF THE EXISTING ROAD. THE BEARINGS, DISTANCES AND CURVE DATA SHOWN ALONG THIS COMMON PROPERTY LINE ARE ALL CALCULATED DIMENSIONS.



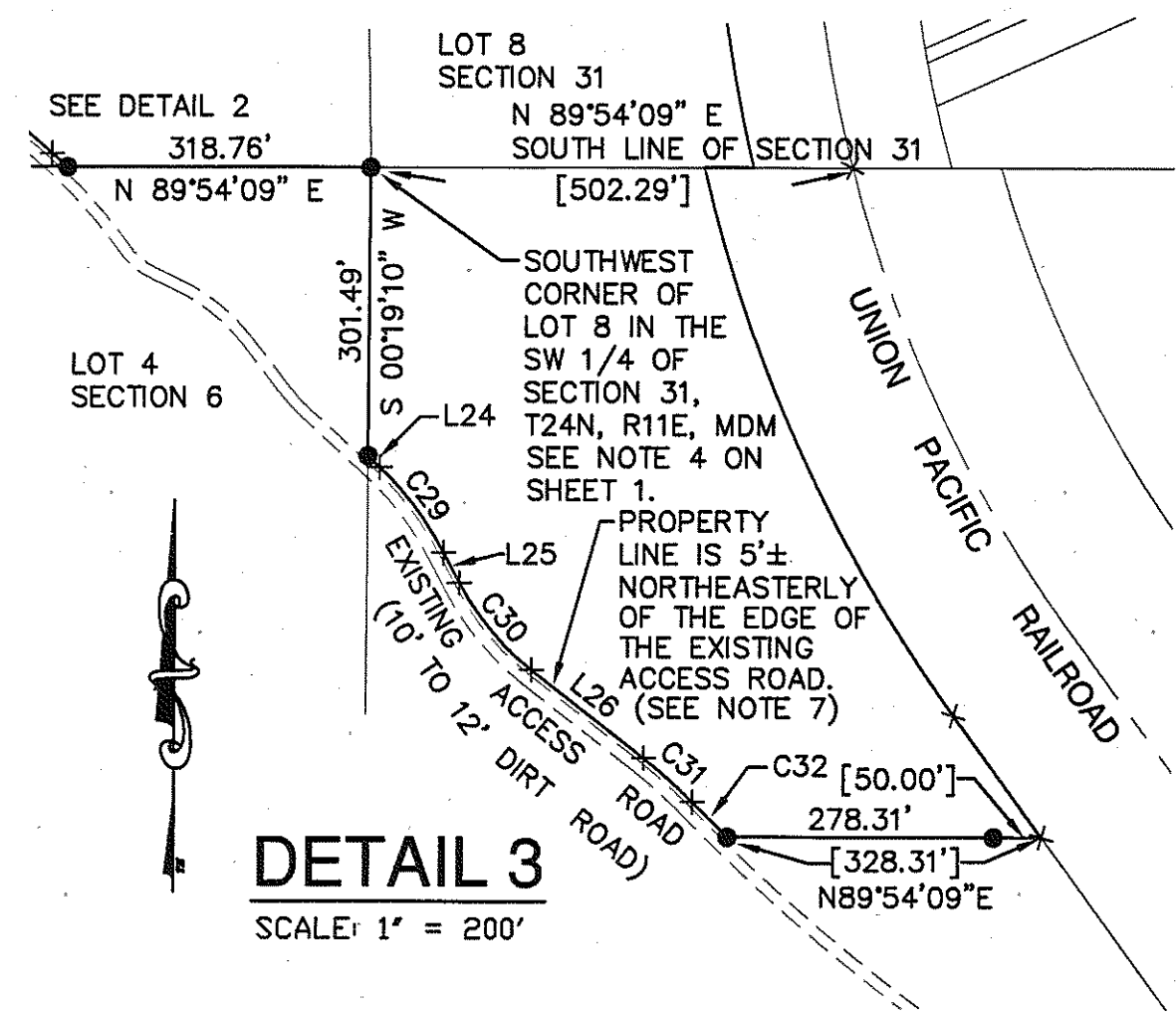
SEE NOTE 7

LINE	LENGTH	BEARING
L13	102.72'	N10°14'40"W
L14	41.03'	N04°49'27"E
L15	161.79'	N23°32'05"E
L16	165.50'	N02°00'55"E
L17	90.02'	N15°55'53"W
L18	213.18'	N36°20'20"W
L19	281.36'	N41°14'21"W
L20	71.17'	N15°03'56"W
L21	224.47'	N32°55'00"W
L22	28.60'	N64°14'05"W
L23	213.31'	N49°26'06"W

SEE NOTE 7

CURVE	LENGTH	RADIUS	DELTA
C17	172.32'	325.00'	30°22'45"
C18	263.00'	1000.00'	15°04'07"
C19	130.62'	400.00'	18°42'38"
C20	18.78'	50.00'	21°31'09"
C21	70.48'	225.00'	17°56'48"
C22	142.47'	400.00'	20°24'28"
C23	85.53'	1000.00'	4°54'01"
C24	68.52'	150.00'	26°10'25"
C25	46.73'	150.00'	17°51'04"
C26	136.65'	250.00'	31°19'05"
C27	103.32'	400.00'	14°47'59"
C28	21.46'	500.00'	2°27'34"

**DETAIL 2**  
SCALE: 1" = 200'



**DETAIL 3**  
SCALE: 1" = 200'

SEE NOTE 7

LINE	LENGTH	BEARING
L24	4.66'	N47°57'33"W
L25	35.21'	N27°32'22"W
L26	149.18'	N51°56'59"W

SEE NOTE 7

CURVE	LENGTH	RADIUS	DELTA
C29	124.74'	350.00'	20°25'11"
C30	119.29'	280.00'	24°24'36"
C31	68.37'	500.00'	7°50'05"
C32	51.86'	2000.00'	1°29'09"

- LEGEND**
- FOUND 1/2" REBAR WITH ALUMINUM CAP STAMPED R.C.E. 13225 PER 7M80
  - SET 1/2" REBAR WITH ALUMINUM CAP STAMPED LS7045
  - + COMPUTED POINT, NOTHING FOUND OR SET
  - [ ] INDICATES CALCULATED DATA USING THE SURVEYED CENTERLINE OF THE MAIN LINE RAILROAD TRACK, AND DEED OFFSETS WHERE APPLICABLE.

**RECORD OF SURVEY**  
FOR  
SIERRA PACIFIC INDUSTRIES

WITHIN PORTIONS OF SECTION 31, T. 24 N., R. 11 E., M.D.M.,  
AND SECTION 6, T23N, R11E, M.D.M.  
PLUMAS COUNTY, CALIFORNIA

PREPARED BY:  
**BASTIAN ENGINEERING**  
213 POPLAR VALLEY ROAD  
BLAIRSDEN, CALIFORNIA 96103  
L.S.7045