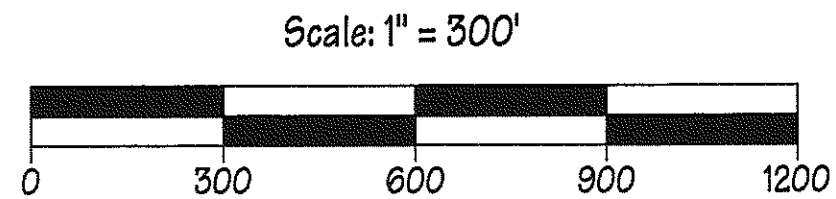
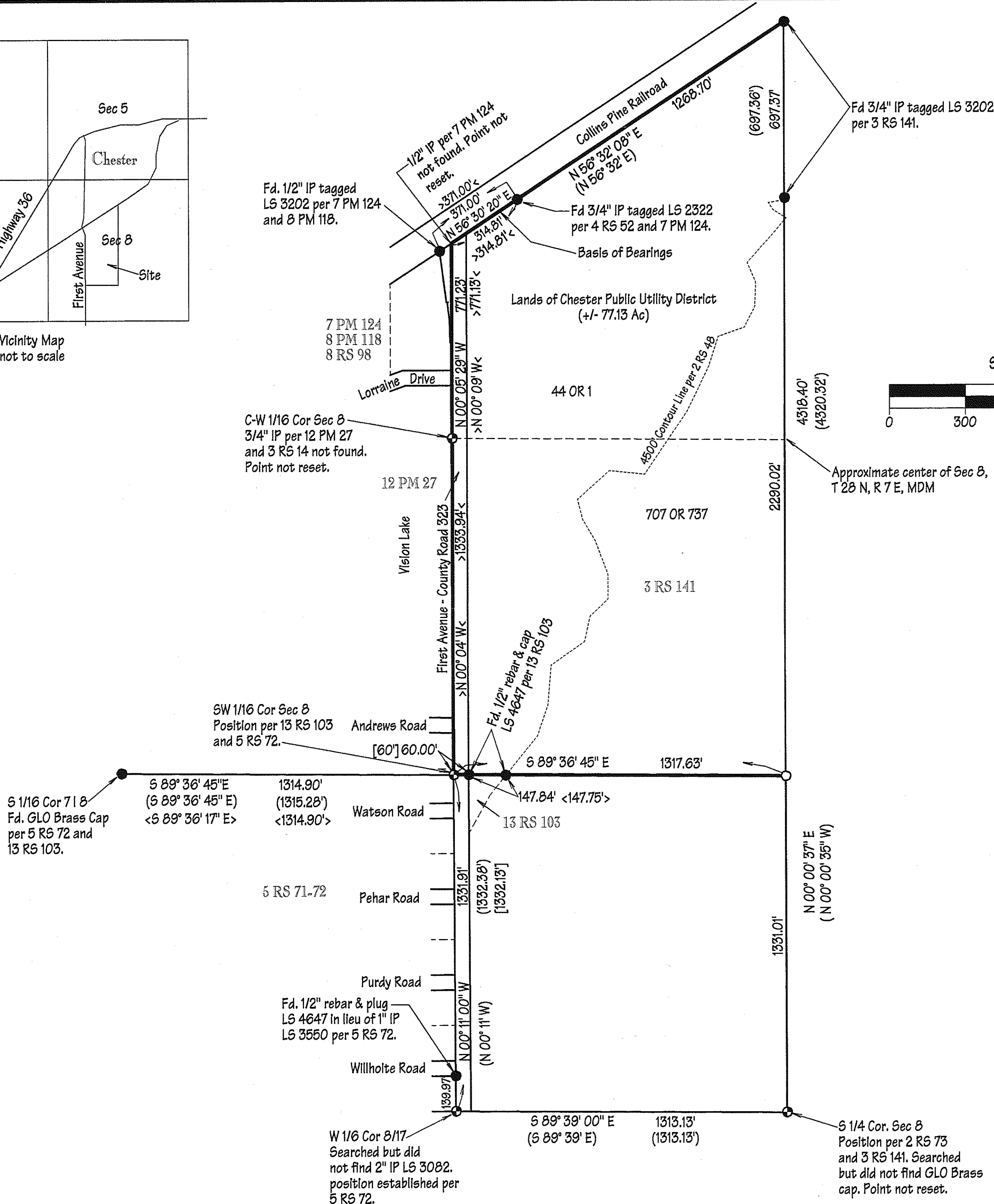


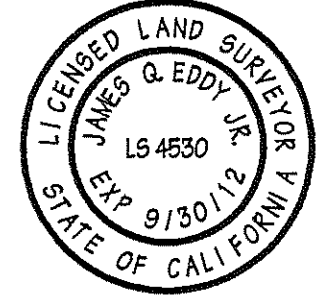
Vicinity Map not to scale



SURVEYOR'S STATEMENT

This map correctly represents a survey made by me or under my direction in conformance with the requirements of the Professional Land Surveyor's Act at the request of the Chester Public Utility District in September 2010.

James Q. Eddy Jr.
James Q. Eddy Jr. L.S. 4530
License Expiration Date: 09/30/12



COUNTY SURVEYOR'S STATEMENT

This map has been examined in accordance with Section 8766 of the Professional Land Surveyor's Act this 20th day of January, 2011.

R. Tom Hunter
Tom Hunter RCE 30515
Plumas County Surveyor
License Expiration Date: 03/31/12



COUNTY RECORDER'S STATEMENT

Filed this 24th day of January, 2011 at 11:00 A.M. in Book 15 of Records of Surveys at Page 68 at the request of the Plumas County Surveyor.

Fee: \$80
Document No.: 2011-000509

Kathleen Williams
County Clerk - Recorder

BY: *Sue Clift*
Deputy

LEGEND

BASIS OF BEARINGS: The Bearing of N 56° 30' 20" E between the two found monuments along the Southerly line of the Collins Pine Railroad as shown on 7 PM 124.

- Indicates set 5/8" rebar and plug L.S. 4530.
- Indicates found monument as noted.
- ⊙ Indicates calculated position.
- () Indicates record data per 3 RS 141.
- [] Indicates record data per 5 RS 71-72.
- > < Indicates record data per 7 PM 124.
- < > Indicates record data per 13 RS 103.

RECORD OF SURVEY FOR CHESTER PUBLIC UTILITY DISTRICT
IN THE WEST 1/2 OF SECTION 8, T 28 N, R 7 E, M.D.M. IN PLUMAS COUNTY, CALIFORNIA.

SCALE: 1" = 300'
JAMES Q. EDDY JR.
P.O. BOX 1587
SUSANVILLE, CA 96130
(530) 257-7674