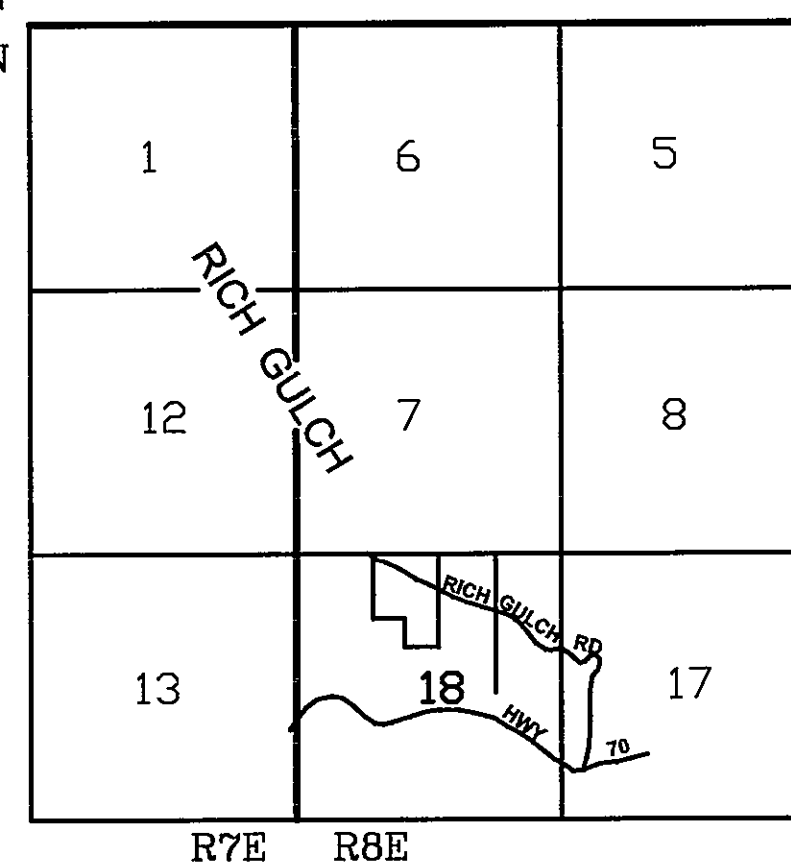


## VICINITY MAP

T26N  
T25N

NOT TO SCALE



## LEGEND

- ☒ FOUND BLM CORNER
  - CALCULATED CORNER
  - CORNER NOTE
  - SET STANDARD U.S. FOREST SERVICE DRIVE-IN MONUMENT (BEARING TREES AS NOTED)
  - PROPERTY BOUNDARY MARKED AND POSTED
  - FD CORNER AS NOTED
- (R1) 4RS40 LS 3634  
(R2) 12RS9 LS6051  
(R3) GLO MINTO (1880)  
(R4) BLM ROGER WILSON (1939)  
(R5) JOSEPH M. LITTLE (1909)  
M.S. No. 4777  
(R6) PERCY L. DAY (1914)  
HOMESTEAD ENTRY SURVEY No. 117

## SHEET INDEX

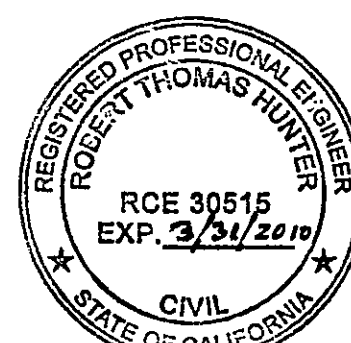
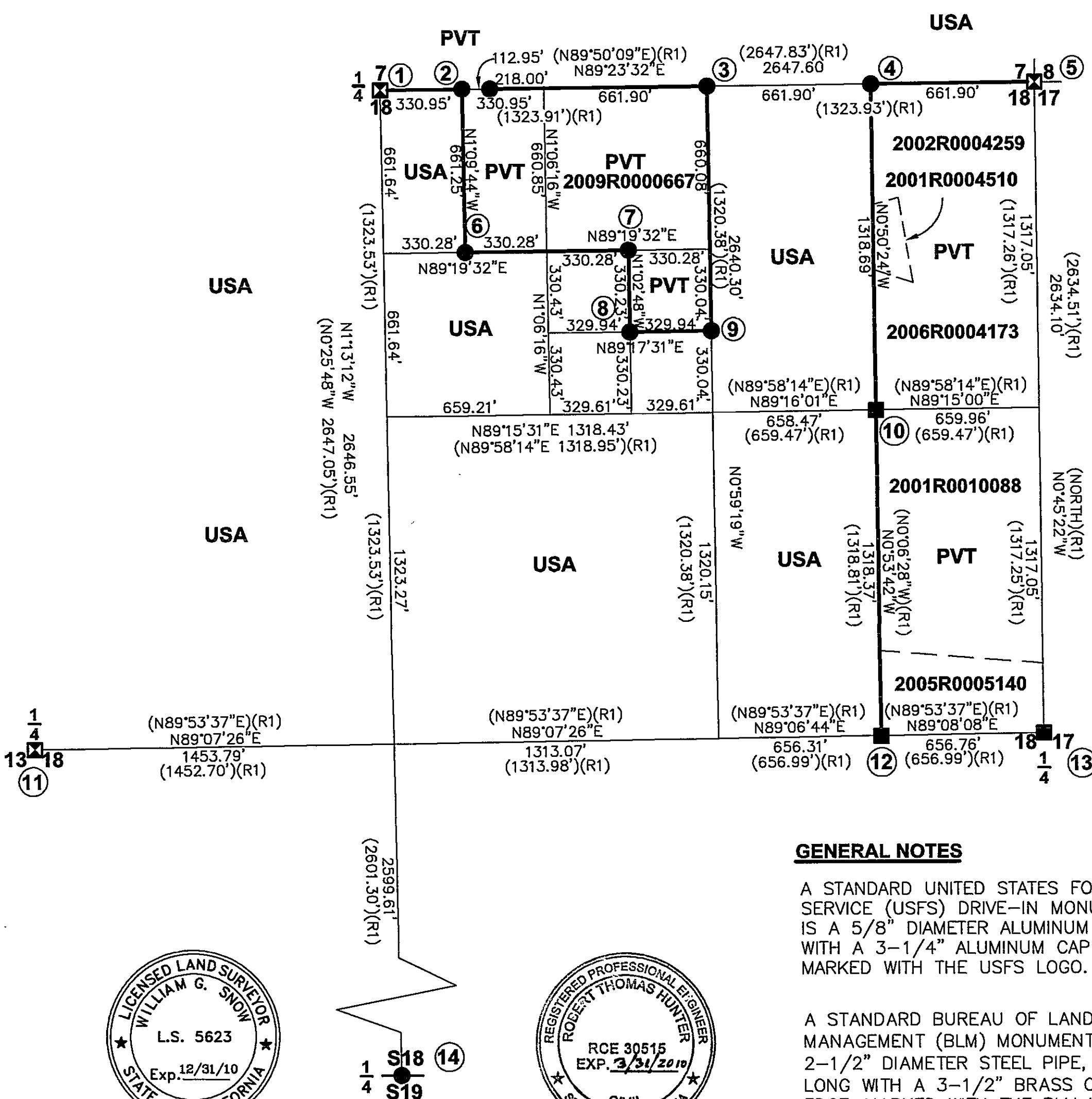
SECTION 18 T25NR8E MDM	1 OF 5
SECTION 17 & MS 4777 T25NR8E MDM	2 OF 5
HES 117 T25NR8E MDM	3 OF 5
CORNER NOTES	4 OF 5
CORNER NOTES	5 OF 5

## RECORDER'S STATEMENT

FILED THIS 11 DAY OF March, 2010 AT 1:53 P.M. IN BOOK  
OF RECORDS OF SURVEYS, AT PAGE 53-57 AT THE REQUEST  
OF THE COUNTY SURVEYOR. Book 15

FEE: \$16.00KATHLEEN WILLIAMS COUNTY  
RECORDERDOC. No: 2010-0001400 BY: Laura Davis

DEPUTY



## GENERAL NOTES

A STANDARD UNITED STATES FOREST SERVICE (USFS) DRIVE-IN MONUMENT IS A 5/8" DIAMETER ALUMINUM ROD WITH A 3-1/4" ALUMINUM CAP EDGE-MARKED WITH THE USFS LOGO.

A STANDARD BUREAU OF LAND MANAGEMENT (BLM) MONUMENT IS A 2-1/2" DIAMETER STEEL PIPE, 28" LONG WITH A 3-1/2" BRASS CAP EDGE-MARKED WITH THE BLM LOGO.

## SURVEYOR'S STATEMENT

THIS MAP CORRECTLY REPRESENTS A SURVEY MADE BY ME OR UNDER MY DIRECTION IN CONFORMANCE WITH THE REQUIREMENTS OF THE PROFESSIONAL LAND SURVEYORS' ACT AT THE REQUEST OF PLUMAS NATIONAL FOREST IN

2/23, 2010.

William G. Snow  
WILLIAM G. SNOW LS 5623

## COUNTY SURVEYOR'S STATEMENT

THIS MAP HAS BEEN EXAMINED IN ACCORDANCE WITH SECTION 8766 OF THE PROFESSIONAL LAND SURVEYOR'S THIS 11 DAY OF March, 2010.

BY R. Tom Hunter  
ROBERT THOMAS HUNTER  
PLUMAS COUNTY SURVEYOR RCE 30515

## DGA&amp;V LAND SURVEYOR'S

11448 SMITH RD.  
MARYSVILLE, CA. 95901  
530-671-6375

BILL SNOW 775-787-8420

## RECORD OF SURVEY

SECTION 18, T25N R8E, MDM  
PLUMAS COUNTY, CALIFORNIA

FOR  
U.S.D.A. PLUMAS NATIONAL FOREST  
159 LAWRENCE ST  
QUINCY, CA. 95971

DRAWN BY: B. SNOW DATE: DECEMBER, 2009 SHEET 1 OF 5