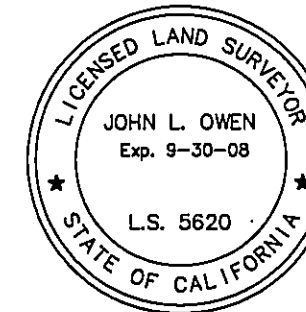


SURVEYOR'S STATEMENT

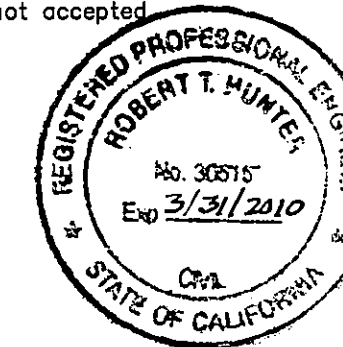
This map correctly represents a survey made by me or under my direction in conformance with the requirements of the Professional Land Surveyors' Act at the request of Judi Madden in February, 2008.



John L. Owen LS 5620

COUNTY SURVEYOR'S STATEMENT

This map has been examined in accordance with Section 8766 of the Professional Land Surveyors' Act this 6th day of June, 2008.



R Tom Hunter
PLUMAS COUNTY SURVEYOR
RCE 30515
EX: 3/31/2010

RECORDER'S STATEMENT

Filed this 9th day of June, 2008 at 2:13 p.m. in Book 15 of Record of Surveys, at page 05, at the request of the County Surveyor.

Fee: \$8.00
Document No. 2008-0004025
Kathleen Williams
County Recorder
By: Kayla Davis
Deputy

- NOTES:
- 1) Corner falls at East face of 4x4 fence post set in concrete, set witness corner S89°56'58"E, 1.00' stamped WC 1'
 - 2) Corner falls at South face of 6" Cedar tree, set witness corner N89°56'58"W, 1.00' stamped WC 1'

Basis of Bearings

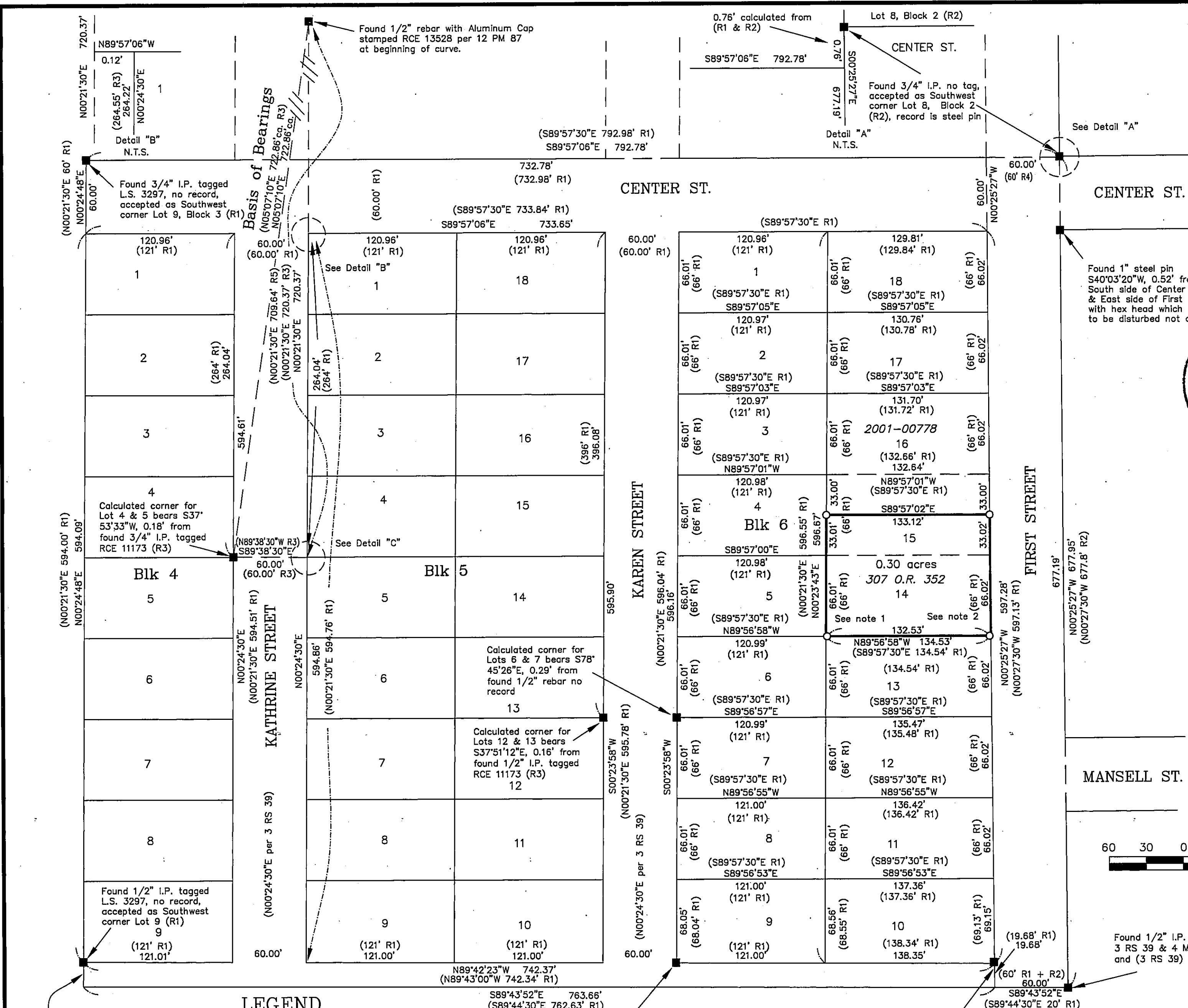
The Basis of Bearings of this map is the calculated Bearing of N05°07'10"E, from the found 3/4" I.P. tagged RCE 11173 on the West side of Katherine Street at the Southeast corner of Lot 4 Block 4 and the 1/2" rebar with Aluminum Caps stamped RCE 13528 at the beginning of curve on the East line of Katherine which points are found in Book 12 of Parcel Maps at page 87, Plumas County records.

RECORD OF SURVEY

for
James & Judith Madden
and Michael Banchio

Lot 14 and Southerly 33 feet of Lot 15
in Block 6, Amervale Subdivision, 1 M 71
A portion of Section 19
T. 24 N., R. 10 E., M.D.M.
Plumas County ~ California
Scale 1" = 60' February 2008

Hamby Surveying Inc.
P.O. Box 1209
Portola, CA 96122
(530) 832-5571



LEGEND

- FOUND point as described
- SET 5/8" rebar with Aluminum Cap stamped LS 5620
- (R1) RECORD per 1 M 71, Amervale Subdivision
- (R2) RECORD per 1 M 29, Atkin's Subdivision
- (R3) RECORD per 12 PM 87
- (R4) RECORD per 3 PM 59
- (R5) RECORD per 9 RS 130