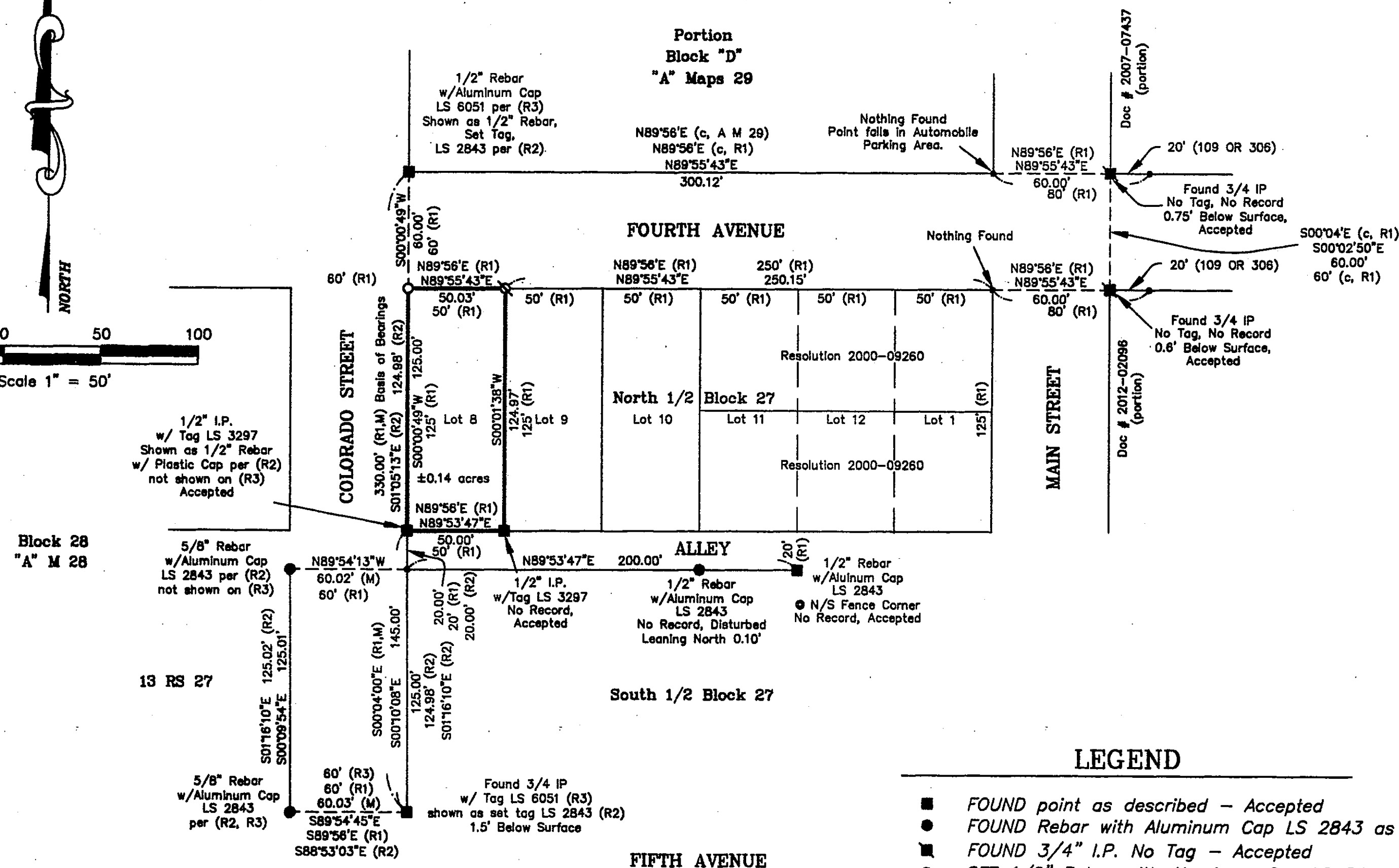
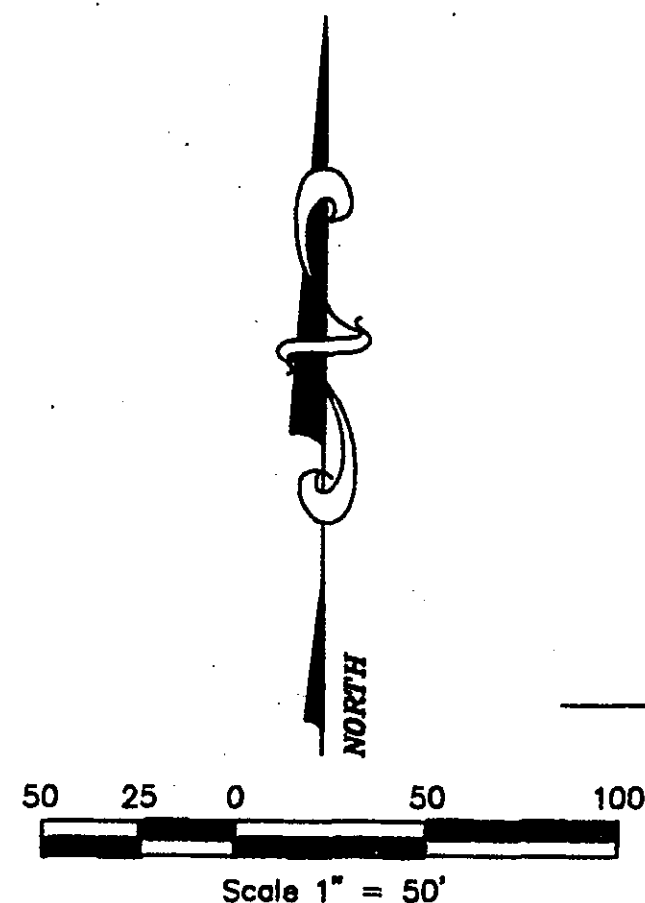


*The Basis of Bearings of of this map is the East Line of Colorado Street, between found monuments, being S00°04'00"E as shown on the map entitled "Official Plat of Roberts Lumber Company's Addition to Portola Townsite" filed September 5, 1910, in Book A of Maps at Page 74, Plumas County records.*



- FOUND point as described – Accepted
- FOUND Rebar with Aluminum Cap LS 2843 as Noted
- FOUND 3/4" I.P. No Tag – Accepted
- SET 1/2" Rebar with Aluminum Cap LS 8463
- ⊗ SET 1/2" Rebar with Plastic Cap LS 8463
- Searched – Nothing Found or Set – Dimension Point

(R1) RECORD per "A" Maps 28

(R2) RECORD per 13 RS 27

(R3) RECORD per 15 RS 139

(M) Measured Data

(c, Rx) Calculated per Record indicated

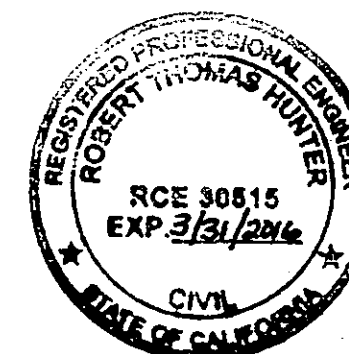
*This map correctly represents a survey made by me or under my direction in conformance with the requirements of the Professional Land Surveyors' Act at the request of Mark Hain in January, 2014.*



Steven A. Alfred  
Steven A. Alfred LS 8463

7/21/14

This map has been examined in accordance with Section 8766 of the Professional Land Surveyors' Act this 4th day of AUGUST, 2014.



Robert Thomas Hunter  
Robert Thomas Hunter · RCE 30515  
PLUMAS COUNTY SURVEYOR

Filed this 6<sup>th</sup> day of August, 2014 at 9:07 a.m. in  
Book 15 of Record of Surveys, at page 146, at the request  
of the County Surveyor.

Fee: \$ 8.00

Kathleen Williams  
County Recorder

Document No. 2014-0004455

By: *Julie A. Lizzo*  
Deputy

Lot 8 in Block 27, Book "A" of Maps at Page 28  
Situates in Section 1  
Township 22 North, Range 13 East, M.D.M.  
In the Incorporated City of Portola  
Plumas County ~ California  
Scale 1" = 50' January, 2014

Steven A. Alfred      LS 8463  
PROFESSIONAL LAND SURVEYOR

P.O. Box 916  
Loyalton, CA 96118  
(530) 826-4587

SHEET 1 OF 1