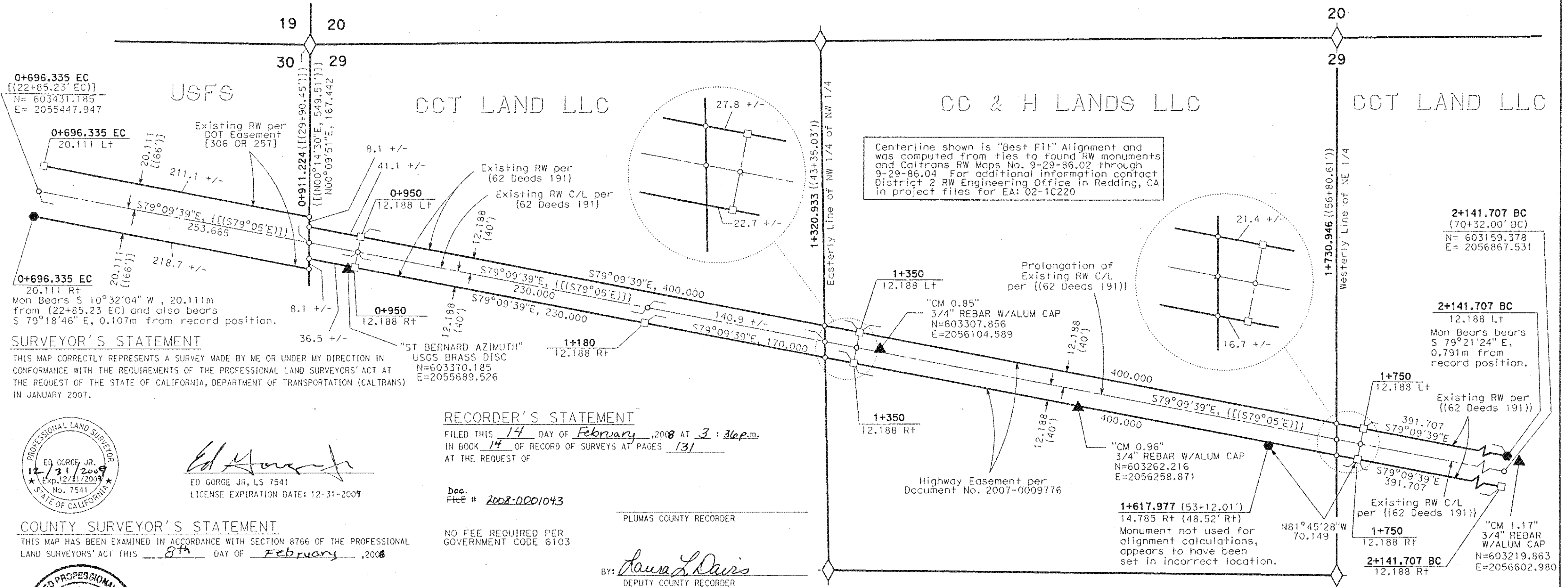
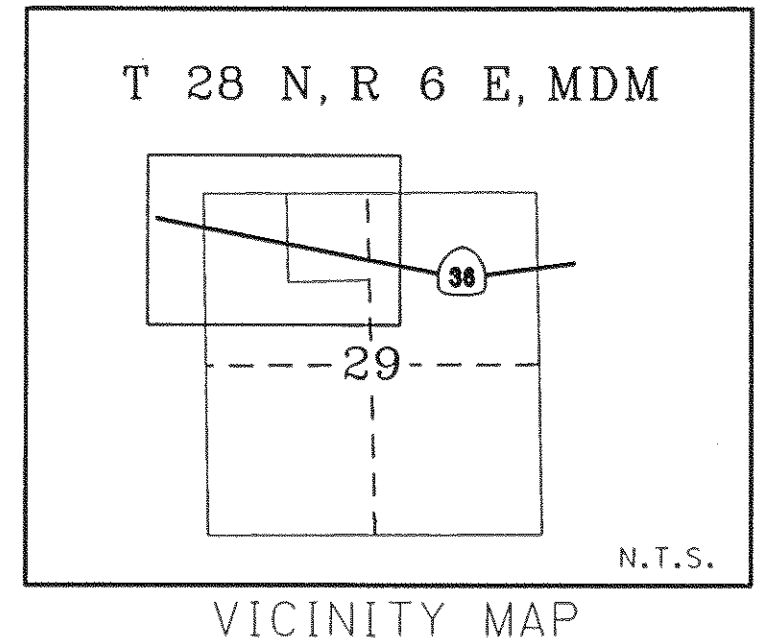
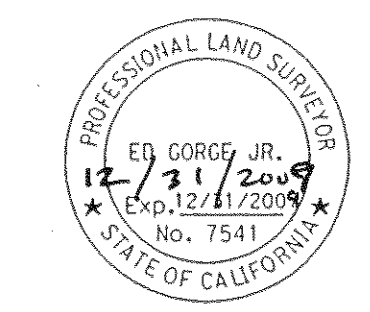


RECORD OF SURVEY #
 STATE OF CALIFORNIA
 BUSINESS, TRANSPORTATION, AND HOUSING AGENCY
 DEPARTMENT OF TRANSPORTATION
**RECORD OF SURVEY
 OF RW MONUMENTATION**
 IN THE UNINCORPORATED TERRITORY OF THE COUNTY OF PLUMAS
 STATE OF CALIFORNIA, ALONG HIGHWAY 36, POSTMILE 0.5 - 1.5
 WITHIN SECTIONS 29, 30, T 28 N, R 6 E, MDM

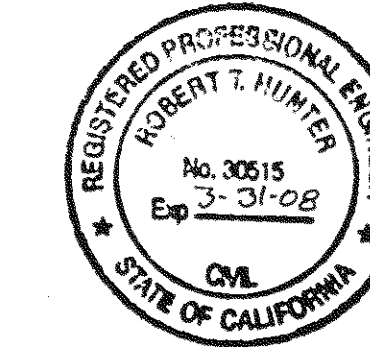


SURVEYOR'S STATEMENT
 THIS MAP CORRECTLY REPRESENTS A SURVEY MADE BY ME OR UNDER MY DIRECTION IN CONFORMANCE WITH THE REQUIREMENTS OF THE PROFESSIONAL LAND SURVEYORS' ACT AT THE REQUEST OF THE STATE OF CALIFORNIA, DEPARTMENT OF TRANSPORTATION (CALTRANS) IN JANUARY 2007.



Ed Gorge Jr.
 ED GORGE JR, LS 7541
 LICENSE EXPIRATION DATE: 12-31-2009

COUNTY SURVEYOR'S STATEMENT
 THIS MAP HAS BEEN EXAMINED IN ACCORDANCE WITH SECTION 8766 OF THE PROFESSIONAL LAND SURVEYORS' ACT THIS 8th DAY OF February, 2008



BY: *R Tom Hunter*
 LICENSE EXPIRATION DATE: 3-31-08
 PLUMAS COUNTY SURVEYOR
 AS NO. RCE 30515

RECORDER'S STATEMENT
 FILED THIS 14 DAY OF February, 2008 AT 3:36p.m.
 IN BOOK 14 OF RECORD OF SURVEYS AT PAGES 131
 AT THE REQUEST OF

Doc. FILE # 2008-0001043
 PLUMAS COUNTY RECORDER
 NO FEE REQUIRED PER GOVERNMENT CODE 6103
 BY: *Sandra L Davis*
 DEPUTY COUNTY RECORDER

CCS NOTE: Bearings, distances, and coordinates are based upon the California Coordinate System of 1983, Zone 1, Epoch 1991.35 - CCS83 (1991.35) Zone 1. Distances are expressed in Grid Meters unless otherwise noted. Divide Grid Distances expressed in Meters by the Combined Grid Factor (CGF) of 0.999709, or multiply by its reciprocal, 1.000291, to obtain Ground Distances in Meters. Multiply Metric distances by 3937/1200 to obtain distances expressed in US Survey Feet. Coordinates provided were generated from ties made to Caltrans Control Monuments per unrecorded Project Control Survey for Project EA: 02-1C220 executed April of 2004 by Caltrans

LEGEND

● FND 6x6 CONC RW MON	◆ SECTION OR FRACTIONAL CORNER FOUND AS NOTED
□ SET 3/4" REBAR w/ALUM. CAP STAMPED "CALTRANS"	◇ SECTION OR FRACTIONAL CORNER NOT LOCATED
○ NO MONUMENT FOUND OR SET	() RECORD DATA PER CALTRANS RW MAPS 9-29-86.02 through 9-29-86.04 Ground Distance in US Survey Feet
[] RECORD DATA PER 306 OR 257	▲ FOUND "CAL-TRANS" CONTROL LINE MONUMENT PER UNRECORDED PROJECT CONTROL SURVEY FOR EA:1C220
{ } RECORD DATA PER 62 DEEDS 191	

STATE OF CALIFORNIA
 BUSINESS, TRANSPORTATION, AND HOUSING AGENCY
 DEPARTMENT OF TRANSPORTATION
 DISTRICT 02
**RECORD OF SURVEY
 OF MONUMENTATION**
 IN THE UNINCORPORATED TERRITORY OF THE COUNTY OF PLUMAS, STATE OF CALIFORNIA ALONG STATE HIGHWAY ROUTE 36, P.M. 0.5-1.4 SECTIONS 29, 30, T.28,N., R.6 E., M.D.M.
 DECEMBER 2007 SHEET 1 OF 1